

SEWER	24" Sewer, 3-31-42	JOB NO.		PROGRESS		QUANTITIES		LOTS		CITY		LOTS		CITY
INDEXED		BLUE PRINT ISSUED FOR:		DATE		EXCAVATION								
REVISIONS	12-31-45 - Room	GRADE ONLY		START		STRAIGHT CURB NEW								
	Grade & Drainage from Sta. 0+0 to Sta. 4+50 between Joy Rd. & Dover and from Sta. 0+75 to Sta. 6+00 between Dover & Cathedral.	CATCH BASINS		FINISH		OLD CURB RESET								
		PAVING CLASS				CIRCULAR CURB								
		DEPT. OF WATER SUPPLY				CONCRETE BASE								
		GAS CO.												

CARD NO.

DEPARTMENT OF PUBLIC WORKS DETROIT

CITY ENGINEERS OFFICE - DIVISION OF PAVING DESIGN

STREET PAVING PLAN

MINOCK AVE.

FROM N.P.L. OF JOY RD. TO N.P.L. OF CATHEDRAL AVE.

TYPE OF PAVEMENT: DRY LAY

Requested by Sheldon Land Company
32121 Plymouth Road
Plymouth, Michigan

DATE: 3-31-42

DESIGNED BY: R.R.R.

DRAWN BY: F.M. Miller

TRACED BY: R.S.

CHECKED BY: R.S.

APPROVED: *[Signature]*
ENGINEER OF STREETS

CITY ENGINEER: *[Signature]*

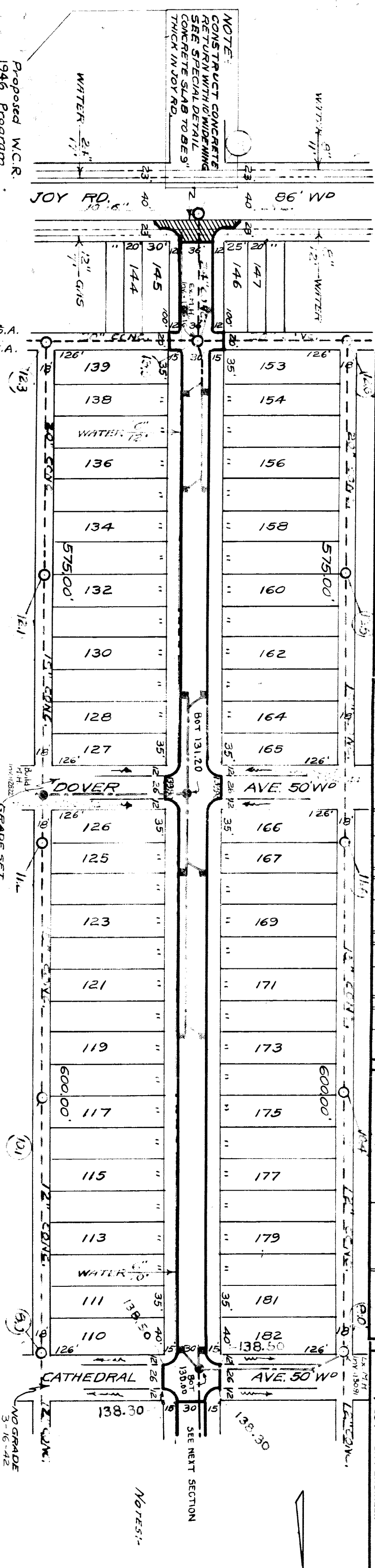
INDEX TO NO. 77110

RECORD NO.

NAME OF STREET: MINOCK AVE.

NUMBER OF SHEETS: 1

SHEET NO. 1



139.80	FUTURE CURB	140.00
139.63	FAV.	139.79
139.71	WK.	139.51
139.71	WK. S.S.A.	139.61
139.71	WK. N.S.A.	139.61
139.91	WK.	139.71
139.91	WK.	139.81
139.91	WK.	139.91
140.01	WK.	139.91
140.01	WK.	140.11
139.98	WK.	139.98
139.88	WK.	139.88
139.78	WK.	139.78
139.48	WK.	139.48
139.08	WK.	139.18
138.68	WK.	138.78
138.38	WK.	138.58

6' WALKS ON BOTH SIDES 1' OFF P.L.

NOTES:

CONSTRUCT 8-5TD 18"x12" Y BASINS COMPLETE AND CONNECT AS SHOWN

CONSTRUCT 3 STD M.H.'S COMPLETE

BENCH MARKS

110.204 ON THE N.E. COR. OF WESTWOOD + JOY, IS A VERTICAL BOAT SPIKE IN THE S.S. OF A 24" ELM TREE - 139.243

SPIKE IN THE S.S. OF LIGHT POLE N.W. COR. OF MINOCK + JOY RD. - 140.78

LOWER PART OF FIG. 6 ON N.S. OF LOT 165 ON S.W. COR. MINOCK + DOVER - 140.13

FIG. C ON N.S. OF LOT 110 ON S.E. COR. OF MINOCK + CATHEDRAL - 138.92

APPLICATOR #249-73 3-31-42 Dover to W. Chicago

