

880-145117
16211-162

SEWER	DA	JOB NO.		PROGRESS	
INDEXED		BLUE PRINT ISSUED FOR:	DATE	START	FINISH
REVISIONS	1-2-31-45- ROOM	GRADE ONLY			
		CATCH BASINS			
		PAVING CLASS			
		DEPT. OF WATER SUPPLY			
		GAS CO.			
		EXCAVATION			
		STRAIGHT CURB NEW			
		OLD CURB RESET			
		CIRCULAR CURB			
		PAVING			
		CONCRETE BASE			
		HOR. SCALE 1" = 100'	BOOK 957 PAGE 32		
		VER. SCALE 1" = 2'	DATE 3-16-42		
		PLAN	PROFILE	COMPUTED	
		CHECKED	GRADE	CHECKED	H.S.
		LOTS	LENGTH	LENGTH	LENGTH
			2,351.74	1,175.87	1,175.87
		CITY	140.00	70.00	70.00
		TOTAL	2,491.74	1,245.87	1,245.87
		CITY			
		DESIGNED BY	R. R. R.		
		DRAWN BY	F. M. Mikel		
		TRACED BY			
		CHECKED BY	R. R.		
		APPROVED			
		ENGINEER OF STREETS			
		CITY ENGINEER			

DEPARTMENT OF PUBLIC WORKS DETROIT
CITY ENGINEER'S OFFICE - DIVISION OF PAVING DESIGN
STREET PAVING PLAN

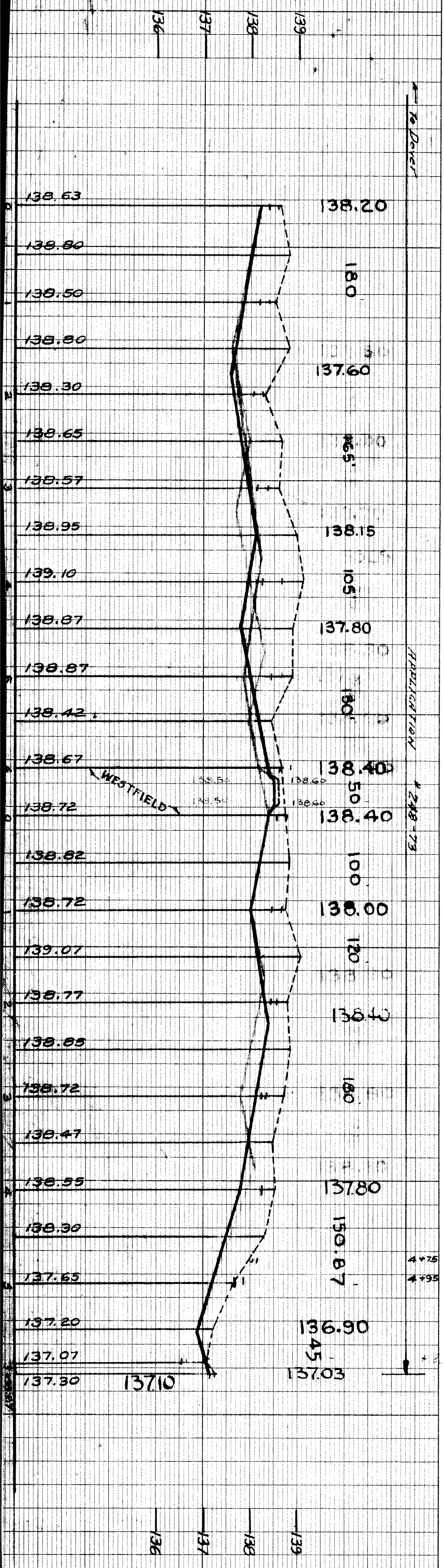
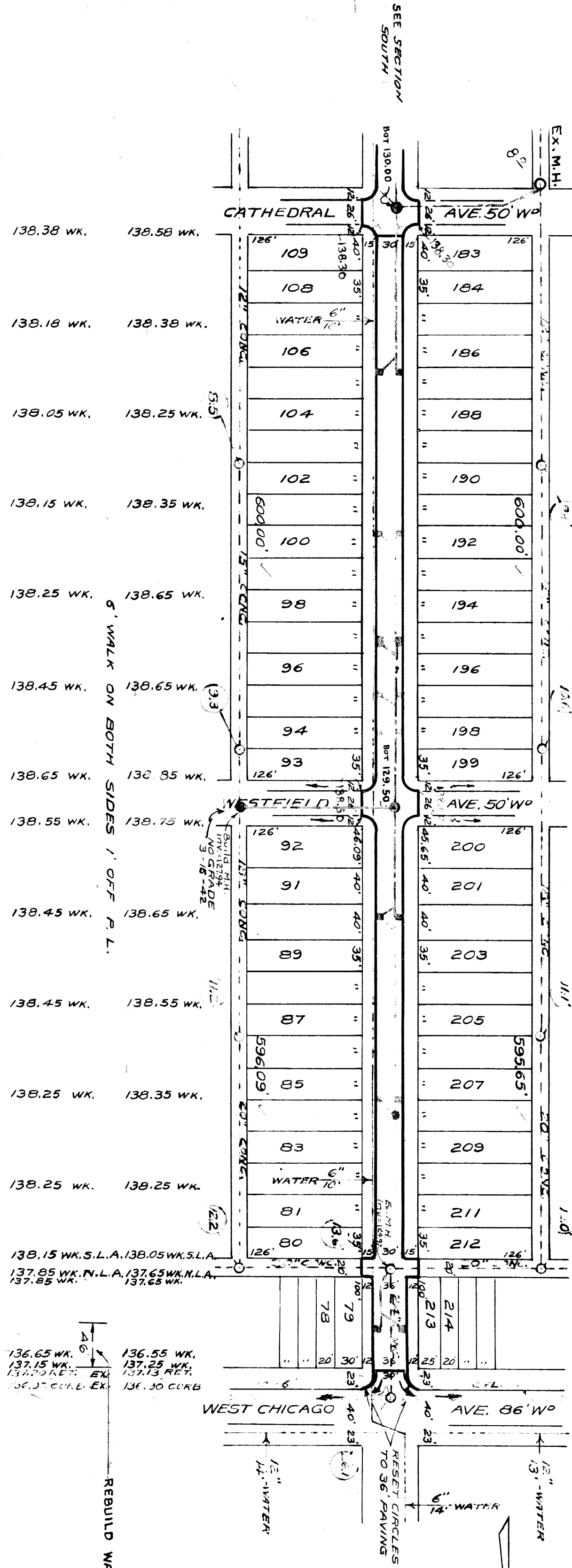
NAME OF MINOCK AVE.
FROM N.P.L. OF CATHEDRAL AVE.
TO S.P.L. OF WEST CHICAGO AVE.
TYPE OF PAVEMENT CONCRETE WIDTH 30.8.36

Requested by Sheldon Land Company
32121 Plymouth Road
Plymouth, Michigan

APPLICATION #248-73 3-5-46 Lanes to W. Chicago

CARD NO. 77110
INDEX NO. NO.
RECORD NO. NO.

NUMBER OF SHEETS 1
SHEET NO. 1



NOTES:
Construct 8'-5to 18"x12" Basins
Concrete and Connect as shown
Construct 2 STD MANH Concrete

VERTICAL SPIKE IN THE W.S. OF CATHEDRAL, IS A SPK. IN E.S. OF POLE ON S.W. COR. OF MINOCK+WESTFIELD---138.537 SPK. IN S. OF LT. POLE N.W. COR. MINOCK+W. CHICAGO---137.76 SPK. IN S. OF LT. POLE N.W. COR. MINOCK+W. CHICAGO---137.84 CROSS ON THE W.S. OF EVERGREEN 50' S. OF WEST CHICAGO IS A CROSS ON THE END OF THE EASTERLY WINDOW OF HOUSE #140.404

