

SEWER DIVISIONS
DRAWING NO. SUPPLEMENTARY DETAILS

NOTE:
BEFORE STARTING CONSTRUCTION CONTRACTOR MUST CHECK WITH UTILITIES FOR LOCATIONS OF EXISTING STRUCTURES WHETHER OR NOT INDICATED ON PLANS
PLAN SCALE DISTORTED
LOTS & ALLEYS 1" = 100'
STREET WIDTHS 1" = 50'
DRAINAGE COMPLETED
PAVING COMPLETED

QUANTITIES	ESTIMATED		FINAL	
	LOTS	CITY	LOTS	CITY
EXCAVATION CU YDS.	2 519	514		
NEW CURB LIN. FT.	2 112	349		
PAVING SQ. YDS.	3 547	1 011		
SIDEWALK SQ. FT.		252		
MANHOLES ADJUST	3	1		
BASINS CONSTRUCT	3	1		
SEWERS 12" LIN. FT.	175	50		
SEWERS 18" LIN. FT.				

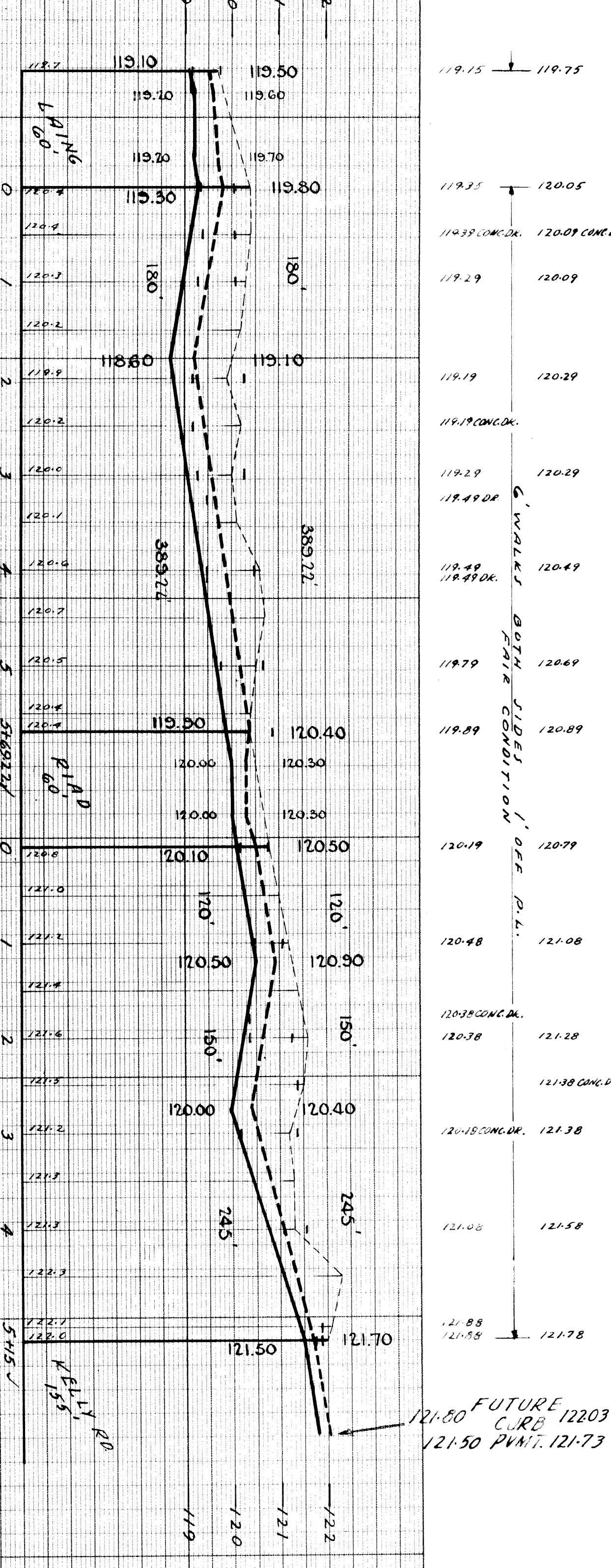
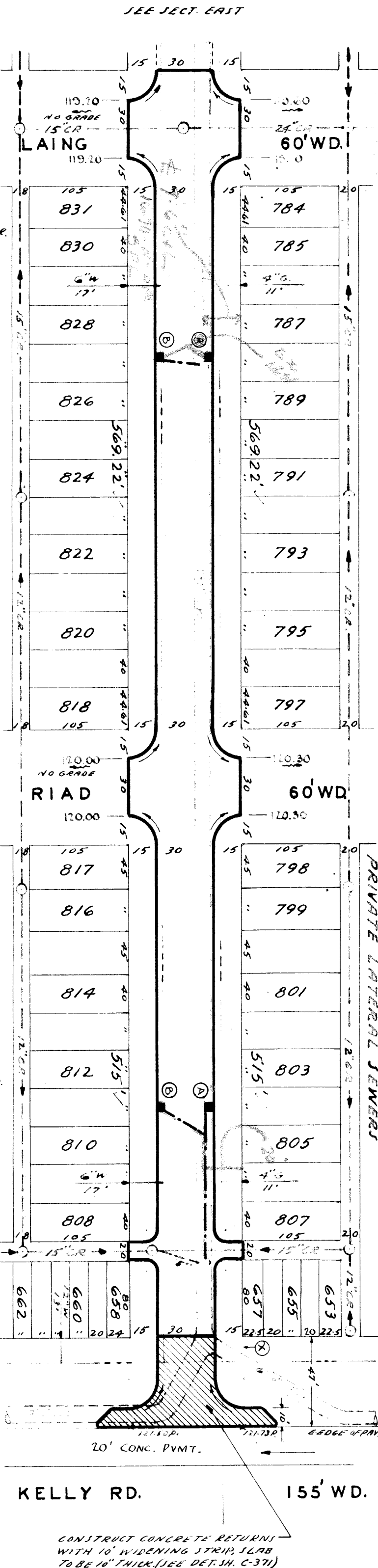
HON. SCALE 1" = 100'

DESIGNED BY	S.S.	DATE	6-7-45
DRAWN BY	H. K. EBERT P.M.	CHECKED BY	S.S.
TRACED BY	"	APPROVED BY	S.S.
CHECKED BY	S.S.	APPROVED BY	S.S.

ENGINEER OF STREETS
CITY ENGINEER

DESIGNED BY S.S.
DRAWN BY H. K. EBERT P.M.
TRACED BY "
CHECKED BY S.S.
APPROVED BY S.S.

DEPARTMENT OF PUBLIC WORKS DETROIT
CITY ENGINEERS OFFICE ... DIVISION OF PAVING DESIGN
STREET PAVING PLAN 966-153
M. E. CORMICK
E.P.L. OF LAING
47' W. OF E.P.L. OF KELLY RD.
30'



NOTE:
AT (A) CONSTRUCT 2 STD. 18" 12" V BASINS COMPLETE AND CONNECT TO EXISTING MANHOLES AS SHOWN.
AT (B) CONSTRUCT 2 MODIFIED 18" 12" V BASINS COMPLETE USING ONE FOOT LENGTH OF 18" STRAIGHT PIPE OVER THE Y TO CLEAR EXISTING UTILITY. CONNECT AS SHOWN.
ADJUST TOPS OF 4 EXISTING MANHOLES.
AT (C) RAISE WALKS ALONG S.E. CORNER OF KELLY RD. AND M. E. CORMICK TO CONFORM TO CURB GRADES.