

DEPARTMENT OF PUBLIC WORKS DETROIT
 CITY ENGINEER'S OFFICE - DIVISION OF PAVING DESIGN
STREET PAVING PLAN

CARD NO. 0
 INDEX NO. **46** TOPO NO. **20**
 SHEET NO. **1**

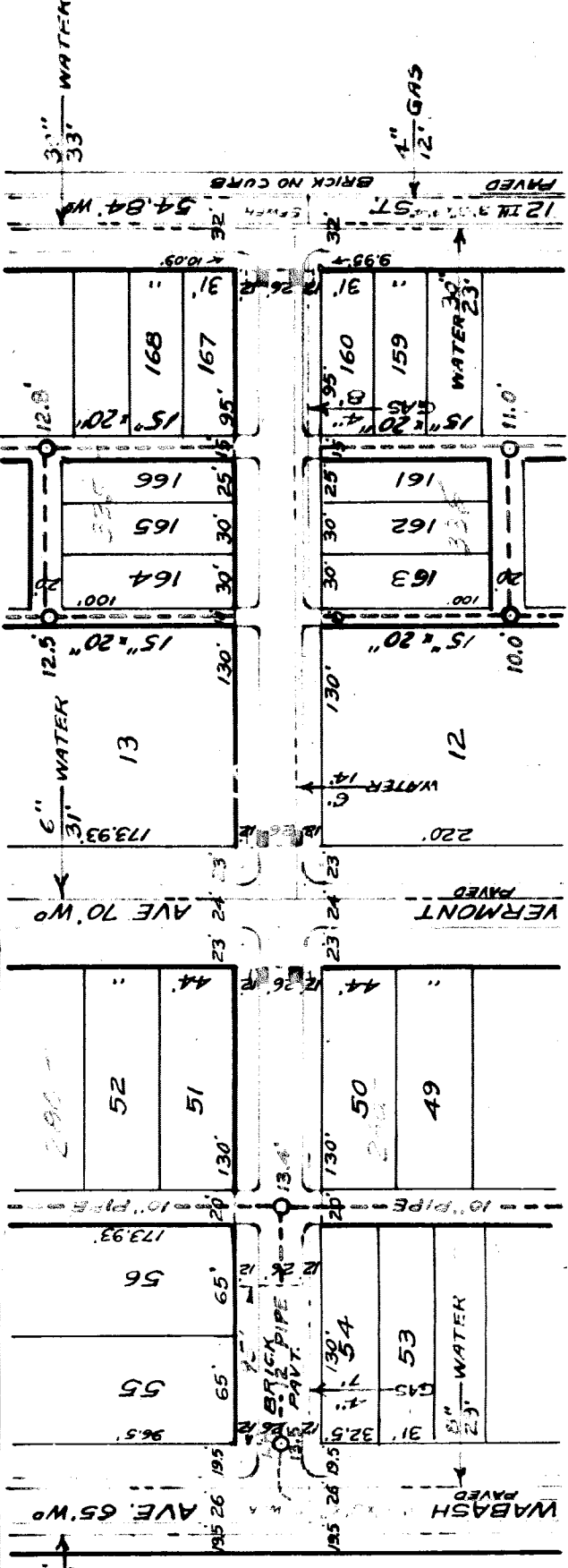
NAME OF STREET **MARK AVE.**
 FROM **250' WABASH AVE.**
 TO **12TH ST.**
 TYPE OF PAVEMENT _____ WIDTH _____

DESIGNED BY <i>M. G. Morgan</i>	BOOK 1352 PAGE 56
DRAWN BY <i>F. Minick</i>	DATE 1-30-41
TRACED BY	PROFILE F.M. GRADE M.M. CHECKED R.S.
CHECKED BY <i>W. R. Fisher</i>	APPROVED <i>W. R. Fisher</i>
ENGINEER OF STREETS <i>W. R. Fisher</i>	CITY

PLAN	CHECKED	LENGTH	COMPUTED
F.M.	M.M.		
GRADE	CHECKED		
REMARKS			

QUANTITIES	LOTS	CITY	LOTS	CITY
EXCAVATION				
STRAIGHT CURB NEW				
OLD CURB RESET				
CIRCULAR CURB				
PAVING				
CONCRETE BASE				

JOB NO.	DATE	START	FINISH
BLUE PRINT ISSUED FOR:			
GRADE ONLY			
CATCH BASINS			
PAVING-CLASS			
DEPT OF WATER SUPPLY			
GAS CO.			



REMOVE OLD POOLS. LOCATE & INDICATE EXISTING OUTLET SEWER & USE SAME FOR DRAINING NEW BASINS.

BENCH MARKS
 30.301 ON E.S. OF 12TH APPROXIMATELY 245' N. OF KIRBY, IS A CROSS ON THE S.W. CORN. OF THE RETAINING WALL OPPOSITE 5449 12TH ST. ELEV. --- 145.799
 MAIL N.S. LT. POLE S.W. COR. 12TH + MARK ELEV. --- 142.94
 MAIL LT. POLE N.W. COR. VERMONT + MARK ELEV. --- 142.17
 ARROW ON HYD. N.W. COR. WABASH + MARK ELEV. --- 140.66

JOB-NO-D-1200

