

BEFORE STARTING CONSTRUCTION CONTRACTOR MUST CHECK WITH UTILITIES FOR LOCATIONS OF EXISTING STRUCTURES WHETHER OR NOT INDICATED ON PLANS.

REVISIONS	DATE
OLD PLAN, FEB. 1944	

QUANTITIES	LOTS ESTIMATED	CITY
EXCAVATION		
PAYMENT REMOVAL SQ.YDS.		
CURB REMOVAL LFT.		
FILL		
ADJUST MANHOLES		
MANHOLES		
CATCH BASIN ADJUST		
CATCH BASIN STANDARD NEW		
12" SEWER PIPE LFT.		
PAVING SQ.YDS.		

QUANTITIES	LOTS ESTIMATED	CITY
PAVING		
PAVING UNITS		
CURB TYPE II LFT.		
TEST CORES EACH		
SIDEWALK 4" STANDARD SQ.FT.		
CONCRETE DRIVE 4" STD. SQ.FT.		
TREE REMOVAL 4"-12" DIA.		
TREE REMOVAL 13"-18" DIA.		

ASSIGNMENT NO.	325, 01-25
BOOK NO.	498 PG. 21-53
LEVEL	11.19 03
DATE	11.19 03
LOTS 2L	435.00
LENGTH	217.50
CITY 2L	40.00
LENGTH	20.00
TOTAL	475.00
LENGTH	237.50
DATE OF DRAWING	1-25-54
DRAINAGE COMPLETED	
PAVING COMPLETED	

MADE BY	W. HALL
CHECKED BY	W. HALL
PLAN	W. HALL
PROFILE	W. HALL
GRADE	W. HALL
SEWER APPROVED	W. HALL
ESTIMATE	W. HALL
FINAL CHECK	W. HALL
APPROVED	W. HALL
ENGINEER OF STREETS	W. HALL
CITY ENGINEER	W. HALL

INDEX NO.	64
INDEXED	86

DEPARTMENT OF PUBLIC WORKS-CITY ENGINEERS OFFICE

NAME OF STREET MARGARETA

FROM E.P.L. GREENFIELD

TO W.P.L. PREST

TYPE OF PAVEMENT 8 8 ONE COURSE CONCRETE-INTERGRAL CURB 30

8" UNIFORM AT STREET INTERSECTION EXCEPT AS NOTED

PET. NO. BY DATE

NOTE - FOR SYMBOLS (A) ETC., SEE STANDARD DETAIL DRAWING C-437B

BENCH MARKS

P.L. B.M. #87-250, N.E. COR. SEVEN M.I., GREENFIELD 132.784R

P.L. B.M. #87-250A, N.W. COR. SEVEN M.I., WHITCOMBS 151.241R

C.M.M. #1 HYD., S.W. COR. PREST, MARGARETA 154.60

C.B.M. #1 HYD., S.W. COR. GREENFIELD, MARGARETA 155.47

HORIZONTAL CONTROL - USE CROSSES CUT IN WALKS 5'-5" OF W.P.L. MARGARETA AT BOTH RETURNS.

NOTE: AT (X) CONSTRUCT AT DUTCHMAN AS SHOWN

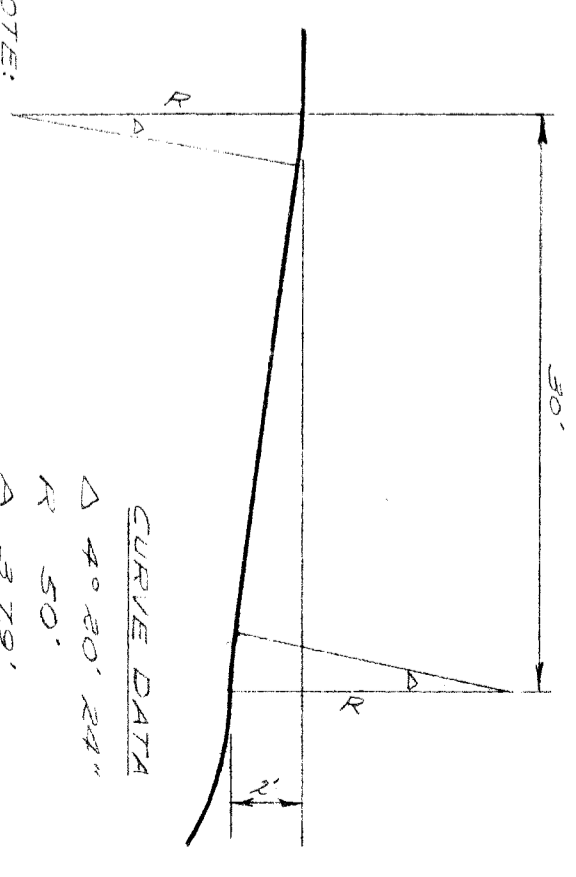
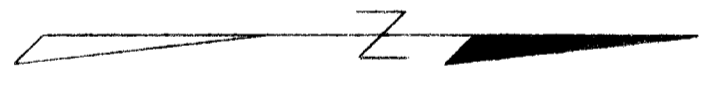
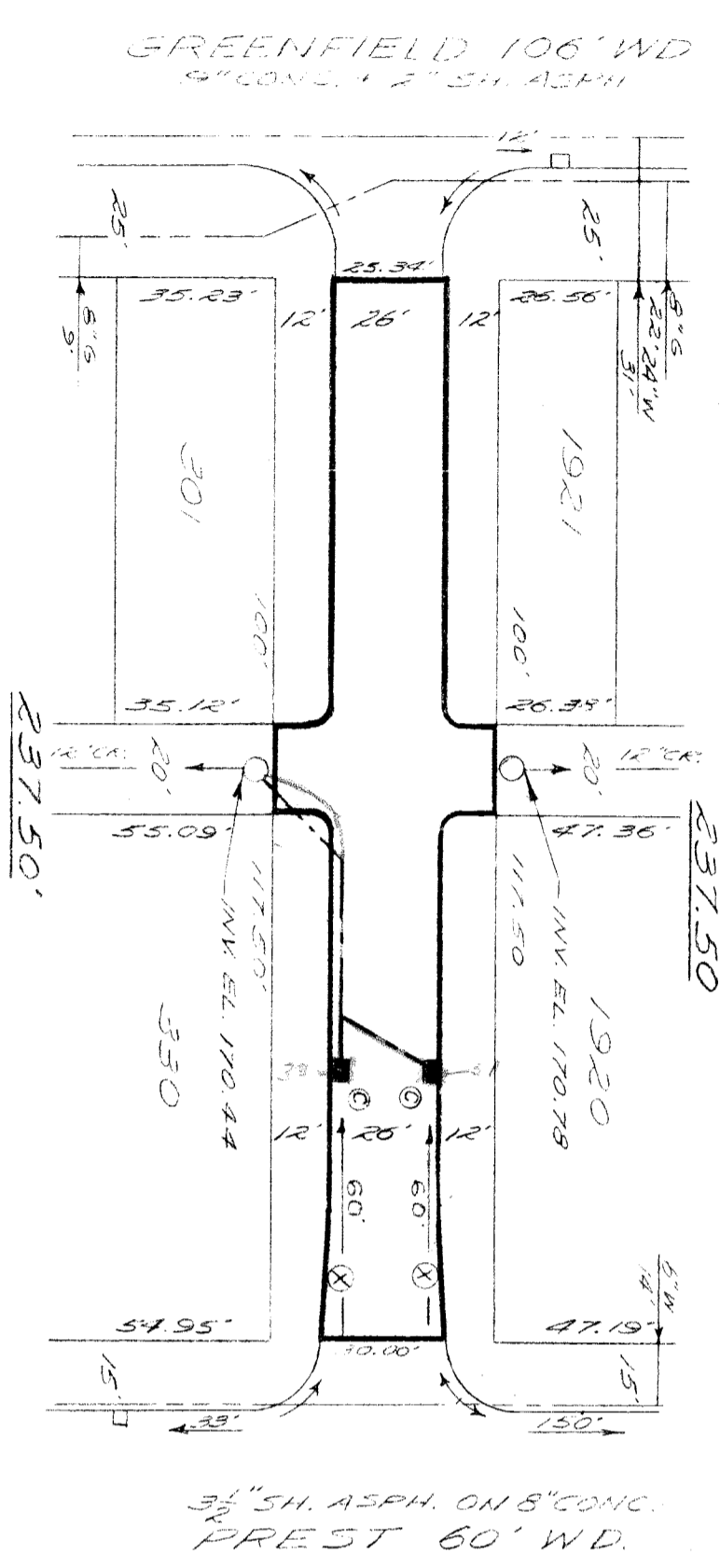
CURVE DATA

Δ 4° 30' 24"

R 50'

A 379'

T 1.89'



NOTE: AT (X) CONSTRUCT AT DUTCHMAN AS SHOWN

CURVE DATA

Δ 4° 30' 24"

R 50'

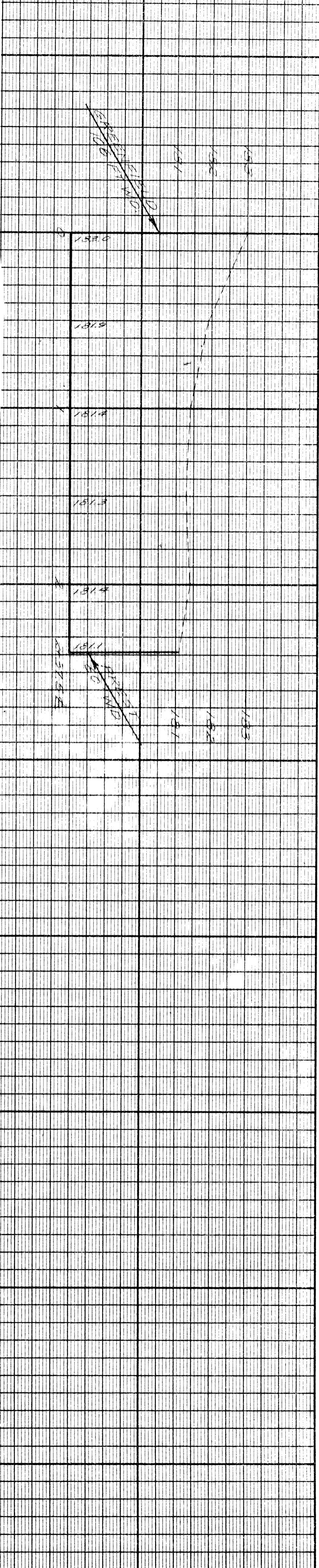
A 379'

T 1.89'

12' - 10.2'

18' - 6'

12' x 12' - 1



100 101 102 103 104 105 106 107 108 109 110 111 112 113 114 115 116 117 118 119 120 121 122 123 124 125 126 127 128 129 130 131 132 133 134 135 136 137 138 139 140 141 142 143 144 145 146 147 148 149 150 151 152 153 154 155 156 157 158 159 160 161 162 163 164 165 166 167 168 169 170 171 172 173 174 175 176 177 178 179 180 181 182 183 184 185 186 187 188 189 190 191 192 193 194 195 196 197 198 199 200