

STREET PAVING PLAN CITY OF DETROIT

DEPARTMENT OF PUBLIC WORKS - CITY ENGINEERS OFFICE

DATE	REVISIONS

BEFORE STARTING CONSTRUCTION CONTRACTOR MUST CHECK WITH UTILITIES FOR LOCATIONS OF EXISTING STRUCTURES WHETHER OR NOT INDICATED ON PLANS.

CONTRACT NO.	C-938
PROJECT NO.	C-733
DRAWING NO.	C-733
DATE	9-11-58
SCALE	1" = 100'
STREET WIDTH	14' - 50"
VERTICAL	1" = 2'
PAVING COMPLETED	9-11-58

QUANTITIES		ESTIMATED	
EXCAVATION	CU. YDS.	LOT NO.	CITY
NEW CURB			
PAVING			
TEST CONES			
SIDEWALK			
MANHOLES			
BASINS			
SEWER-12"			

PETITION NO.		PETITION NO.	
ASSIGNMENT NO.		DATE	
BOOK NO.	1382	GROUP NO.	5-58
SHEET NO.	6-6	LEVEL DATE	5-58
DATE OF DRAWING.		6-6-58	
LOT 21	LENGTH	LOT 21	LENGTH
CITY 21	LENGTH	CITY 21	LENGTH
TOTAL	LENGTH	TOTAL	LENGTH

PLAN	MADE BY	CHECKED BY
PROFILE		
GRADE		
ESTIMATE		
SEWER APPROVED		
FINAL CHECK		
APPROVED		
ENGINEER OF STREETS		
CITY ENGINEER		

INDEX	NO.	37
INDEXED	NO.	94

NAME OF STREET: MARBUD

FROM: N.P.L. OF EDMORE TO: S.P.L. OF EIGHT MILE RD.

TYPE OF PAVEMENT: 8 & 8 ONE COURSE CONCRETE-INTERGAL CURB

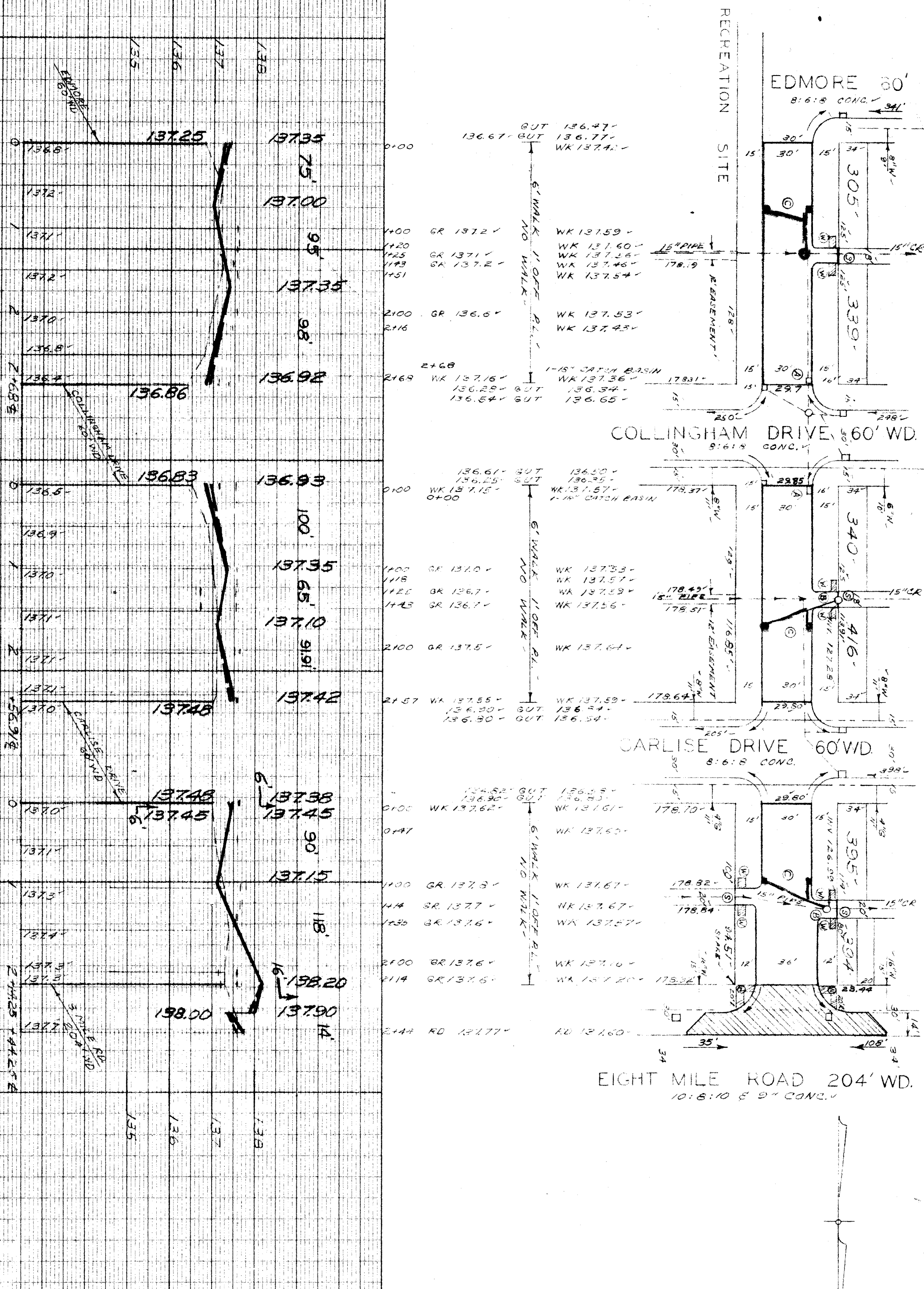
8" UNIFORM AT STREET INTERSECTION EXCEPT AS NOTED

SHEET NO. 2 OF 2 SHEETS

BENCH MARKS

BENCH: 34' DET. WALK COR. REGENT & ST. MARK 138.50 TEMP. - 0.6 M. + 410. N.W. COR. MARBUD & COLLINGHAM 140.57 - 0.6 M. + HYD. S.E. COR. MARBUD & CARLISE 140.27 -

NOTE: FOR SYMBOLS @ ETC. SEE STD. DET. DIV. C-327 - HORIZONTAL CONTROL BY CURB OR WALK ETC. OF A.M. - 0.7 MARBUD & STAKE @ 8 MILE & MARBUD S.E. COR. -



ELEV.	MARKS
136.47	BUT
136.77	BUT
136.75	WK 137.54
137.25	GR 137.25
137.00	GR 137.10
137.35	GR 137.25
136.98	WK 137.53
136.83	WK 137.54
136.93	WK 137.53
137.35	WK 137.54
137.10	WK 137.53
137.42	WK 137.54
137.45	WK 137.53
137.45	WK 137.54
137.15	WK 137.53
138.20	WK 137.54
137.90	WK 137.53
137.77	WK 137.54

GR.	WALK.
137.25	137.54
137.00	137.53
137.35	137.54
136.98	137.53
136.83	137.54
136.93	137.53
137.35	137.54
137.10	137.53
137.42	137.54
137.45	137.53
137.45	137.54
137.15	137.53
138.20	137.54
137.90	137.53
137.77	137.54