

SEWER PLAN 10-12-45  
 REVISIONS  
 SUPPLEMENTARY DETAILS  
 DRAWING NO.

NOTE:  
 BEFORE STARTING CONSTRUCTION CONTRACTOR  
 MUST CHECK WITH UTILITIES FOR LOCATIONS OF  
 EXISTING STRUCTURES WHETHER OR NOT INDI-  
 CATED ON PLANS

PLAN SCALE DISTORTED  
 LOTS & ALLEYS 1" = 40'  
 STREET WIDTHS 1" = 40'

DRAINAGE COMPLETED  
 PAVING COMPLETED

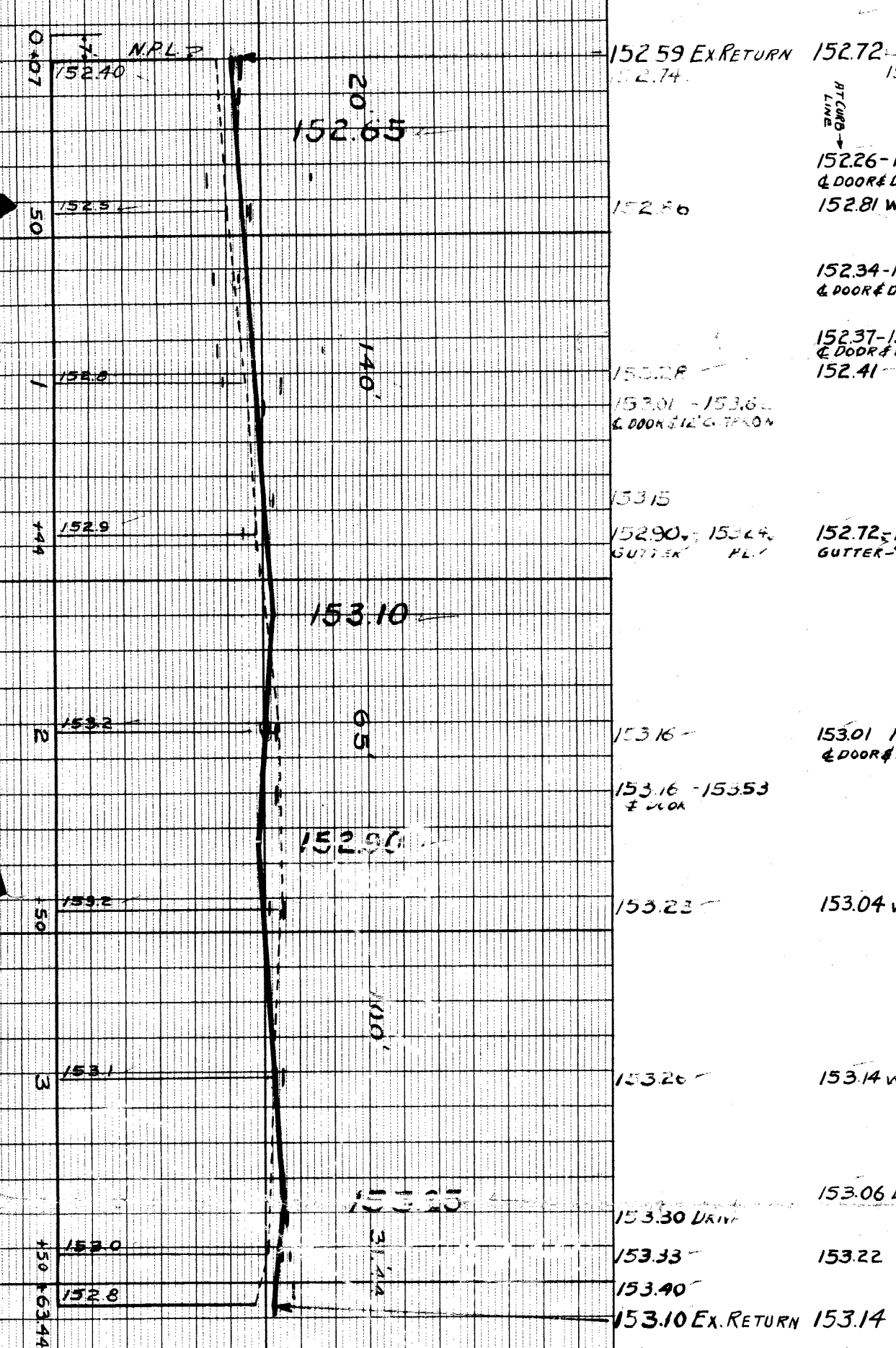
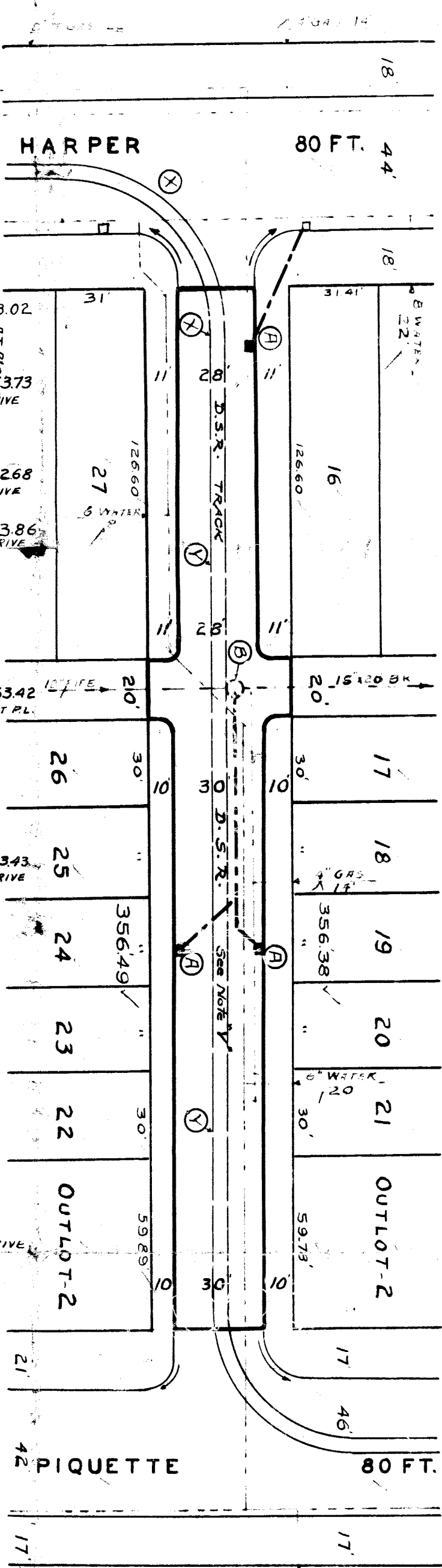
QUANTITIES	ESTIMATED	FINAL	
		LOTS	CITY
EXCAVATION CU. YDS.			
NEW CURB LIN. FT.			
PAVING SQ. YDS.			
SIDEWALK SQ. FT.			
MANHOLES ADJUST			
BASINS ADJUST			
SEWER 12" LIN. FT.			
SEWER 18" LIN. FT.			

NON SCALE 1" = 40' BOOK 1476 PAGE 63  
 VER SCALE 1" = 2' DATE 10-31-45  
 PLAN R.E.R. PROFILE R.E.R. COMPUTED  
 CHECKED C.F.S. GRADE R.E.R. CHECKED  
 CITY 40.00 LENGTH 20.00  
 TOTAL 712.87 LENGTH 356.44  
 CITY 356.44

COST ADVERTISING  
 COST INSPECTION

DESIGNED BY R.E. REID  
 DRAWN BY  
 TRACED BY  
 CHECKED BY  
 APPROVED  
 ENGINEER OF STREETS  
 ASSIST. CITY ENGINEER

DEPARTMENT OF PUBLIC WORKS DETROIT  
 CITY ENGINEER'S OFFICE - DIVISION OF PAVING DESIGN  
 STREET PAVING PLAN  
 MANSUR  
 N.P.L. OF HARPER  
 S.P.L. OF PIQUETTE  
 TYPE OF PAVEMENT 10"-8"-10" ONE COURSE CONCRETE  
 SHEET 1  
 SHEETS



BENCH MARKS

NO.	DESCRIPTION	ELEV.
1	50' HAND HOLE NE COR HENDRIE & HASTINGS	152.70
2	50' L. POLE NW COR MANSUR & HARPER	153.00
3	50' HAND HOLE NW COR HENDRIE & RIVARD	152.84

- UTILITIES
- A) CONSTRUCT 3' DIA. 12" Y TYPE BASINS COMPLETE & CONNECT TO OUTLETS AS SHOWN.
  - A1) ADJUST TOP OF 12" MANHOLE CONCRETE TO FURNISH & INSTALL 30" FLAT TYPE BASIN FRAMES & GRATES
  - AT) D.S.R. WILL REMOVE TRACKS ON THIS CURVE & 40' N OF P.L. D.P.W. TO REPLACE PAVEMENT TORNUP
  - AT) REMAINDER OF D.S.R. TRACK IN MANSUR TO BE ABANDONED. EMBED TRACKS WITHIN NEW CONSTRUCTION.
  - M.H. KERWIN OF D.S.R. CONTACTED ON 10-31-45

Requested By Mr. Schmieding 10-12-45 - Letter