

*Levy's & Company*

REVISION - 2-21-46

CHANGE GRADE

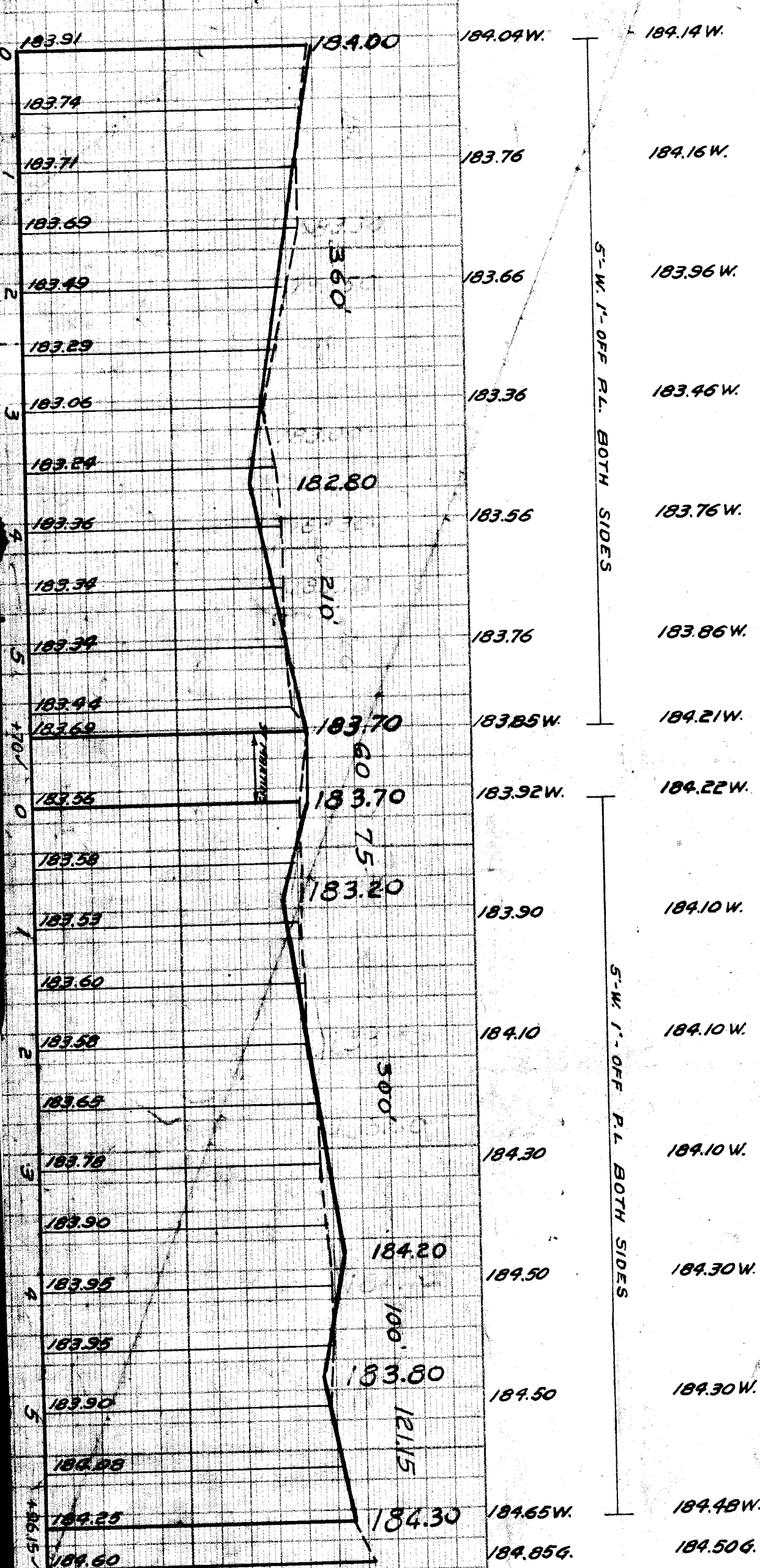
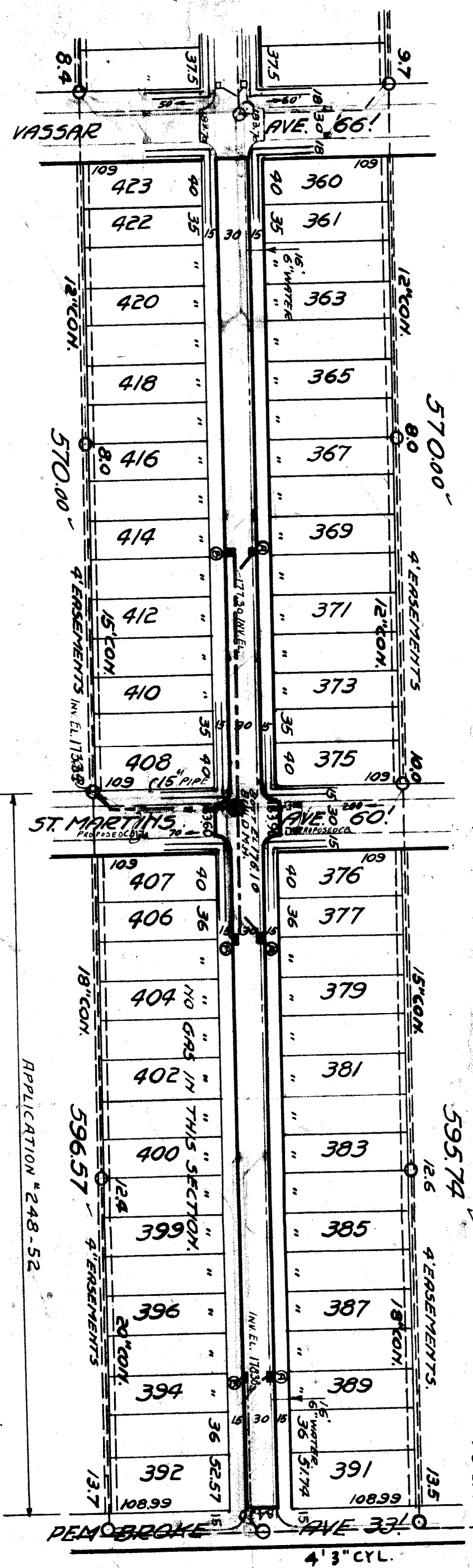
BL.	PG.	LOTS	CITY
Excavation			
Paving			
Ret. Plank 2' x 8"			
Curb Concrete			
Ret. Stone			
Circles			

BL. 997	PG. 53	LOTS	CITY
Excavation			
Paving			
Ret. Plank 2' x 8"			
Curb Concrete			
Ret. Stone			
Circles			

Final Length	Final Length	Final Length
1200' 3/4	1200' 3/4	1200' 3/4
1200' 3/4	1200' 3/4	1200' 3/4
1200' 3/4	1200' 3/4	1200' 3/4

Designed by <i>W. B. Moore</i>	Checked by <i>W. B. Moore</i>	Approved <i>W. B. Moore</i>
Drawn by <i>W. B. Moore</i>	Traced by <i>W. B. Moore</i>	Engineer of Streets <i>W. B. Moore</i>
Scale: Hor. 1" = 100'	Date: 2-20-46	Assistant City Engineer <i>W. B. Moore</i>

DEPARTMENT OF PUBLIC WORKS  
CITY ENGINEER'S OFFICE - DIVISION OF PUBLIC WORKS  
**STREET PAVING PLAN**  
MANSFIELD AVE. 60'  
S. P.L. OF VASSAR  
S. P.L. OF PEMBROKE  
APPLICATION #248-52 2-18-46  
ST. MARTINS TO PEMBROKE



NOTES  
 1. CONSTRUCT 3-MODIFIED 18"x12" Y BASINS COMPLETE USING ONE FOOT LENGTH OF 18" STRAIGHT PIPE OVER THE Y  
 2. CONSTRUCT 3-STD. 18"x12" Y-BASINS COMPLETE & CONNECT TO OUTLETS AS SHOWN.  
 3. CONSTRUCT 1-STD. MANHOLE COMPLETE.

BENCH MARKS.  
 B.M. "W" ON W.B. GATE - NW COR. VASSAR & ST. MARTINS 184.61  
 B.M. "W" ON W.B. GATE - NW COR. ST. MARTINS & MANSFIELD 183.86

EXAMINE COMPLETED  
 DRAWING TO BE FILED