

Revision - 2-21-46
 Change Grade
 J. J. W. W.

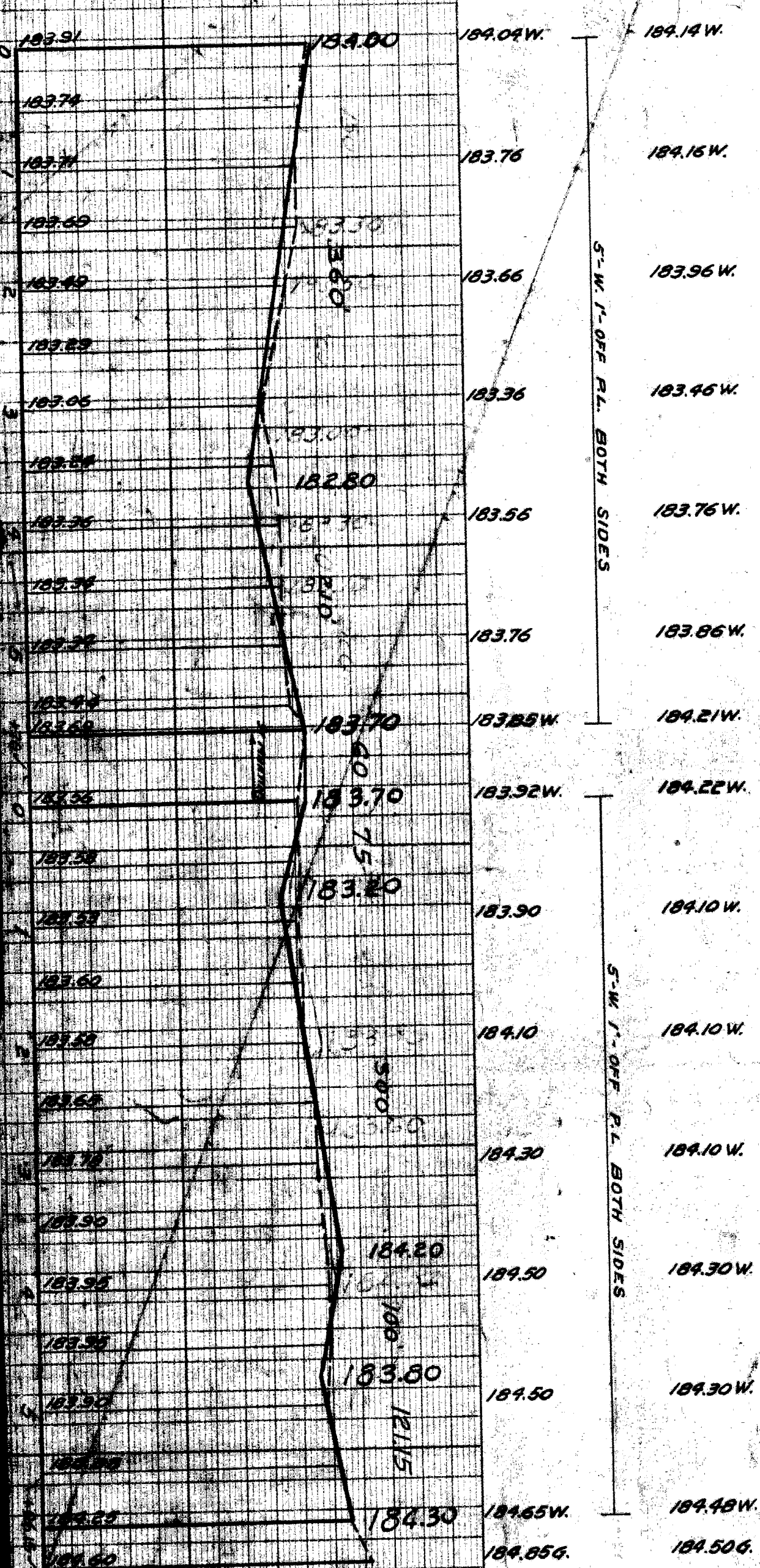
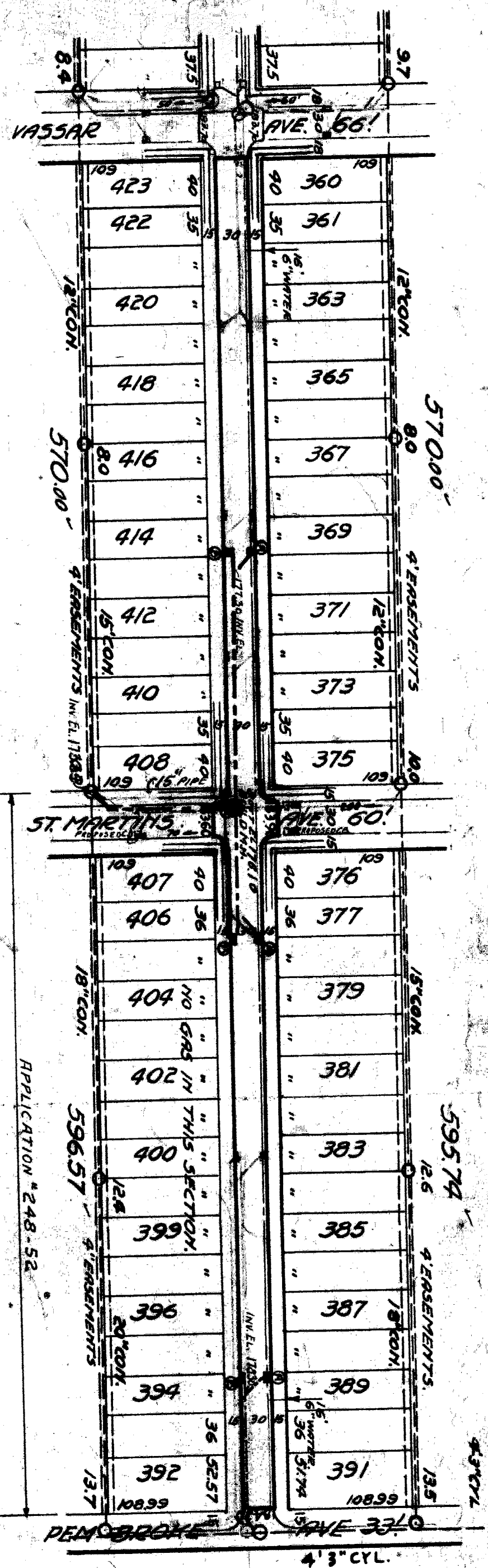
NO.	DATE	DESCRIPTION
1		
2		
3		
4		
5		
6		
7		
8		
9		
10		

NO.	DATE	DESCRIPTION
1		
2		
3		
4		
5		
6		
7		
8		
9		
10		

NO.	DATE	DESCRIPTION
1		
2		
3		
4		
5		
6		
7		
8		
9		
10		

NO.	DATE	DESCRIPTION
1		
2		
3		
4		
5		
6		
7		
8		
9		
10		

NO.	DATE	DESCRIPTION
1		
2		
3		
4		
5		
6		
7		
8		
9		
10		



CONTAINING MOST OF THE HIGH POINTS, BEFORE BEING RECONSTRUCTED ON EITHER OF THE ABOVE STRUCTURES, WHICH IS SHOWN ON PLANS ON 101.

EQUIPMENT COMPLETED
 DRAWING REVISIONS

- NOTES
- 1. CONSTRUCT 3-MODIFIED 18"x12" Y BRASS COMPLETE PIPES
 - 2. ONE FOOT LENGTH OF 18" STRAIGHT PIPE OVER THE
 - 3. CONSTRUCT 3-STD. 18"x12" Y-BRASS COMPLETE CONNECTION
 - 4. TO OUTLETS AS SHOWN.
 - 5. CONSTRUCT 1-STD. MANHOLE COMPLETE

BENCH MARKS.
 B.M. - "W" ON W.B. GATE, - NW COR. VASSAR & MANSFIELD.
 B.M. - "W" ON W.B. GATE, - NW COR. ST. MARTIN'S & MANSFIELD.

TO SHEET OF PEMBROKE
 APPLICATION #248-52 2-18-46
 ST. MARTIN'S TO PEMBROKE

STREET PAVING PLAN
 BUREAU OF VASSAR
 MANSFIELD AVE. 60'