

SEWER	REVISIONS	DATE
	OLD DRAWING	11-24-47
	NOTES CHANGED	D.P.W. DRAINAGE 3-24-50
SUPPLEMENTARY DETAILS		
C-324A	C-390	C-507
C-325	C-524	C-730
C-326A	C-585	C-739
C-327	C-586	C-739A

NOTE: BEFORE STARTING CONSTRUCTION CONTRACTOR MUST CHECK WITH UTILITIES FOR LOCATIONS OF EXISTING UTILITIES WHETHER OR NOT INDICATED ON PLANS.

PLAN SCALE DISTORTED
LOTS & ALLEYS 1" = 100'
STREET WIDTHS 1" = 30'

DRAINAGE COMPLETED

PAVING COMPLETED

QUANTITIES	ESTIMATED	FINAL
EXCAVATION - CU. YDS.	LOTS	CITY
NEW CURB - LIN. FT.	1/421	52
PAVING 8" & 9" THICK	4/192	66
8" UNIF. TRESSES 4" x 12" x 18"	1	300
ADJUST CONCRETE	1	1
MANHOLES CONSTRUCTION	1	1
ADJUST CONCRETE	1	1
CONCRETE SEWER 12" DIA. LIN. FT.	6	6
CONCRETE SEWER 18" DIA. LIN. FT.	100	100
CONCRETE SEWER 24" DIA. LIN. FT.	636	636

DESIGNED BY	SEAFON
DRAWN BY	W. H. BENTLEY JR.
TRACED BY	
CHECKED BY	SEAFON
APPROVED	

ENGINEER OF STREETS
MARTIN R. JACOBSON
DEPUTY CITY ENGINEER

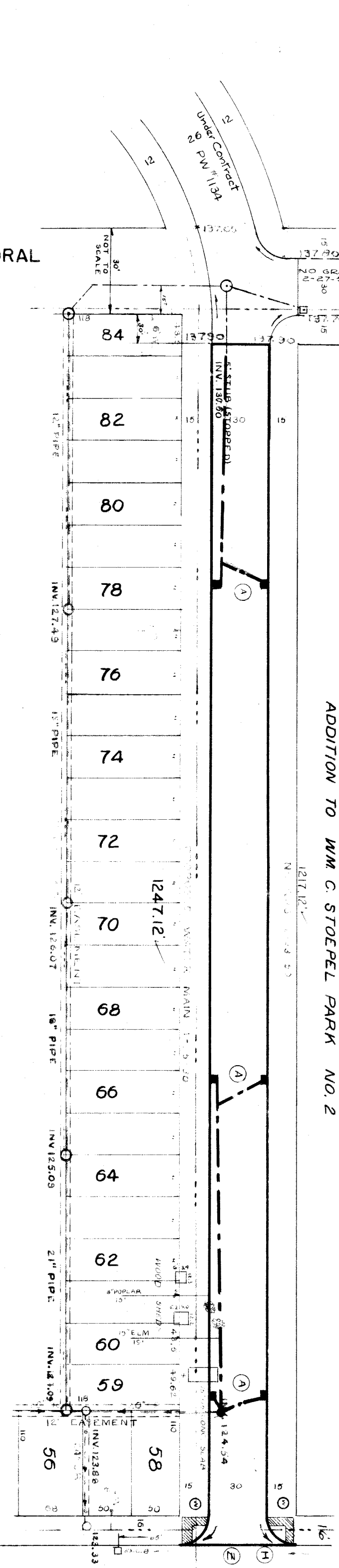
DEPARTMENT OF PUBLIC WORKS DETROIT
CITY ENGINEER'S OFFICE - DIVISION OF PAVING DESIGN
STREET PAVING PLAN
MANSFIELD

FROM: N.P.L. OF CATHEDRAL
TO: 16' N. OF S.P.L. OF W. CHICAGO

INDEX NO. 69
TOTAL NO. 100

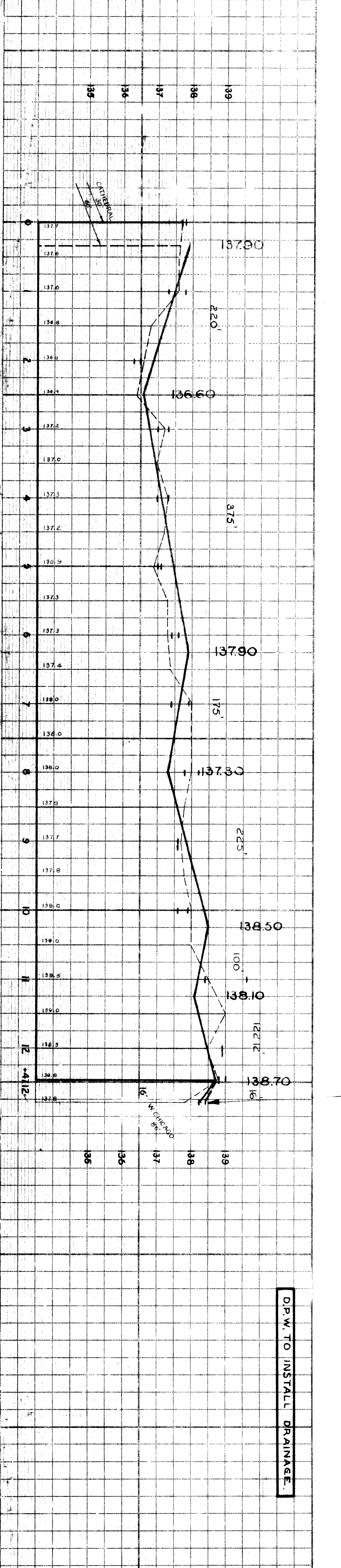
ASBON NO. 146
PETITION NO. 146

SHEET 1 OF 1 SHEETS



MANHOLE NO.	ELEV.
84	137.70
82	137.8 G
80	136.3 G
78	137.3 G
76	137.3 G
74	137.0 G
72	137.0 G
70	137.6 G
68	137.4 G
66	138.2 G
64	137.6 G
62	137.6 G
60	138.4 G
59	138.9 G
58	138.9 G
56	139.0 G
	139.42
	137.90

NO WALKS BOTH SIDES



D.P.W. TO INSTALL DRAINAGE.

NOTE -
ADJUST TOPS OF 6 EXISTING CATCH BASINS USING FLAT TYPE FRAMES & GRATES. SEE NOTE PERTAINING TO CASTINGS. *

CONTRACTOR SHALL REMOVE BROKEN ASPHALT BACK OF UNCTION AS REQUIRED IN FIELD WITH GOLD MATCH TO NEAREST 1/8" GRADES TO BE INCLUDED UNDER EXCAVATION TO THE COST.

ADJUST TOP OF 1 EXISTING S.F.W.H. MANHOLE CONSTRUCT 300 60 TO STANDARD & SIDEWALK. REMOVE GO TOP OF EXISTING CURB.

ADJUST TOP OF WATER MANHOLE RECONSTRUCT CONE OF ONE EXISTING SEWER MANHOLE, IF NECESSARY.

CONTRACTOR SHALL SEAL & REMOVE 1'-8" POPUP C-116. ELEV AS INDICATED ON PLAN @ UNIT BID COST PER THESE.

CONTRACTOR SHALL FURNISH NEW CASTINGS FOR ALL ADJUSTED BASINS & MANHOLES EXCEPT WHEN FORGED CASTINGS ARE AVAILABLE & THESE USE PERMITTED BY THE ENGINEER. A QUALITY OF 48,000 PSI GALV. FOR SO. PIPE SHALL BE USED. THE GALV. CASTINGS MUST BE MATCHED TO 0.01 W. VARIATION AT STATE PAID (DOWN & 575).

PET. NO. 146 ALLAN STEIN BELKIN CONST. 1-17-50 25% P.D.

BENCH MARKS
P.B.M. # 100,255 NE CORNER ASBURY PARK & W. CHICAGO
P.B.M. # 100,259 NE CORNER ST. MARYS & W. CHICAGO
ARROW ON HYD. S.E. CORNER MANSFIELD & CATHEDRAL
ELEV. 137.653
138.391
140.72