

BLK.	PC.	LOT	CITY
1469	PC. 11		
	Excavation		
	Paving		
	Ret. Plank 2' x 8"		
	Curb Concrete		
	Ret. Stone		
	Circles		
	INSPECTION		

BLK.	PC.	LOT	CITY
	Excavation		
	Paving		
	Ret. Plank 2' x 8"		
	Curb Concrete		
	Ret. Stone		
	Circles		

Lot Length	City Length	Final Length
552	271	276 1/4
Total	552	276 1/4

Designed by <i>W. A. Ornglin</i>	Approved
Drawn by <i>M. A. Ornglin</i>	Engineer of Streets
Traced by <i>M. A. Ornglin</i>	City Engineer
Checked by <i>W. A. Ornglin</i>	
Scale: Hor. 1" = 100' Ver. 1" = 2'	Date 6-23-39

Issue No. 69 / 101

DEPARTMENT OF PUBLIC WORKS
CITY ENGINEERS OFFICE - DIVISION OF PAVING DESIGN

STREET PAVING PLAN
MANSFIELD 60'

NAME OF STREET: M.L. CAPITOL

FROM: 272.14' N. OF CAPITOL

TO: 272.14' N. OF CAPITOL

TYPE OF PAVEMENT: 6" One Course Concrete

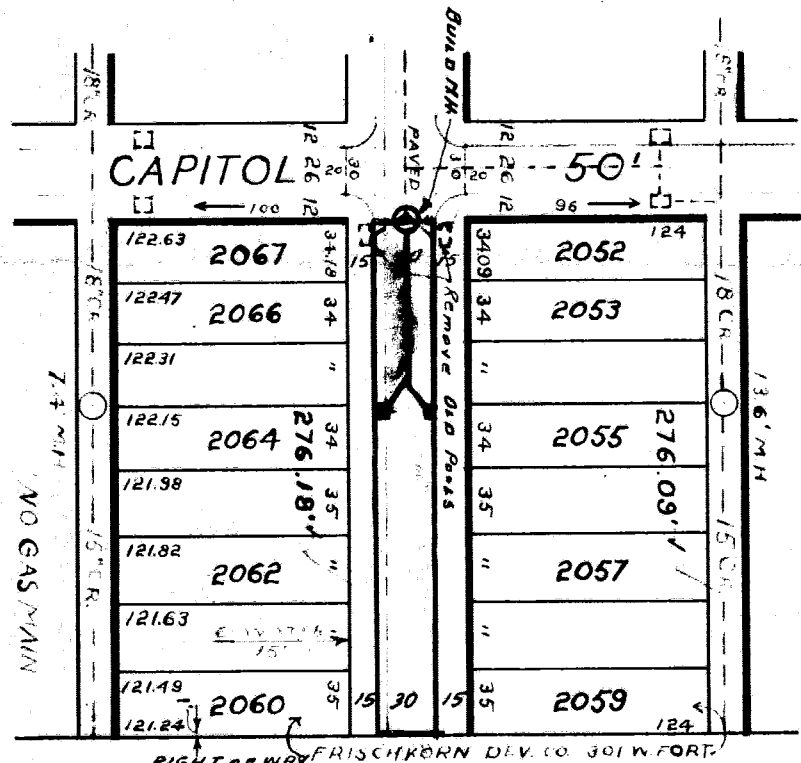
WIDTH: 30'

INDEXED 7-11-39.

DATE: 7-11-39

SHEET NO. 1

EXISTING POOLS & BASINS
NEW " & "



ACREAGE
OWNED BY SAMUEL L. FORD 15555 60. RIVER
(ASSESSED ON W. SIDE OF RUTHERFORD)

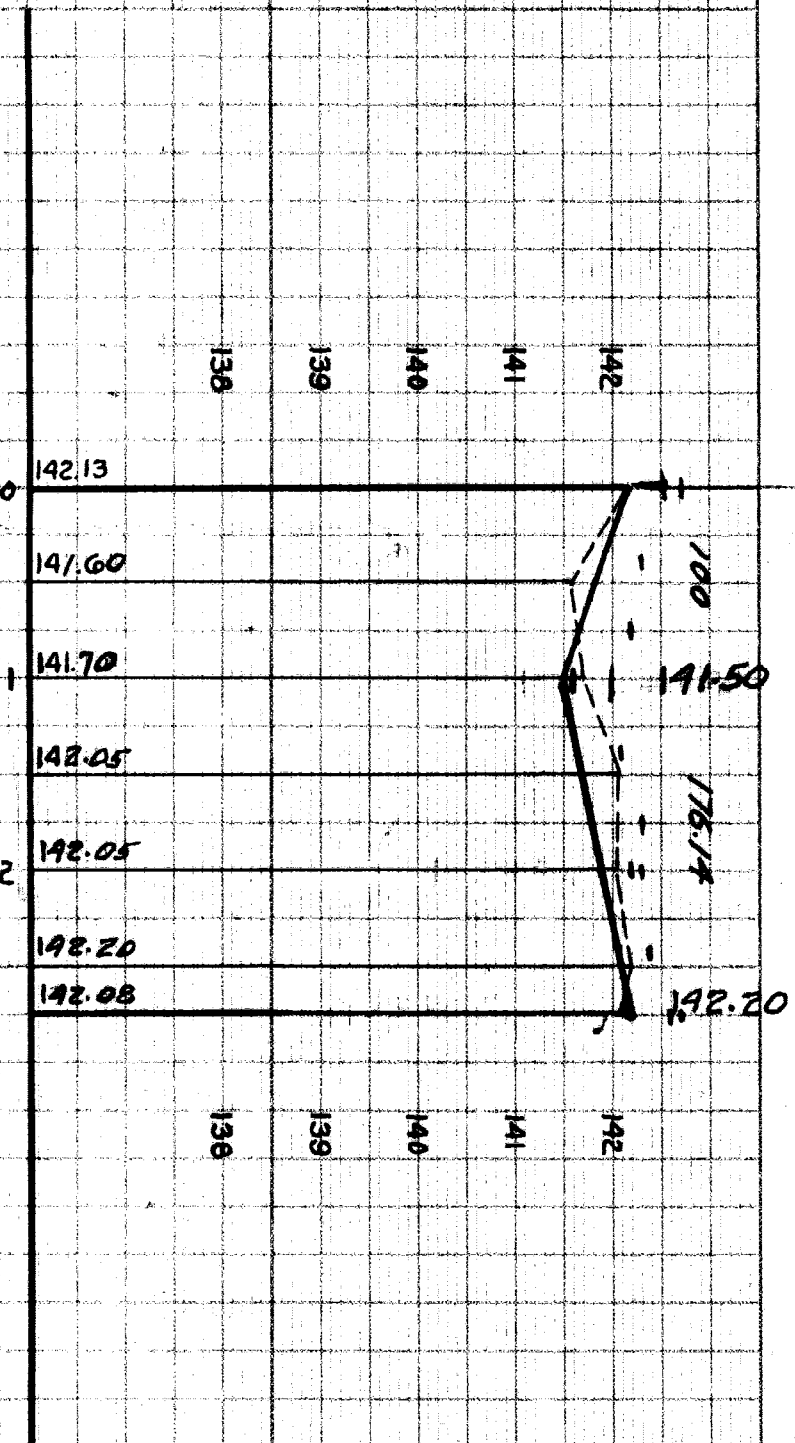
BENCH MARKS

P.B.T. #101-303 R.R. SPK. IN E.S. OF 36' ELM ES. 144.573
ASBURY PK. 275' N. OF CAPITOL. 145.11
ARD ON HYD. N.E. MANSFIELD & CAPITOL 145.62
ARD ON HYD. 300' S. OF CAPITOL ES. MANSFIELD 145.62

142.58 CURB 142.6
142.18 REF. 142.14
142.70 142.51

142.30 Dr. 0+37
142.20 Dr. 0+71
142.01 142.00 Dr. 1+05
142.10 Dr. 1+40
142.30 Dr. 1+76
140.30
142.20
2+45 142.40 Dr.
142.60 142.70

5 WALKS 1' OFF PL.



DRAINAGE COMPLETED
PAVING COMPLETED

SERIES R-R

ID-1261