

J.P. Spach

SEVEN MILE ROAD 76'
 CONC RETURN

Bk.	Pl.	LOTS	CITY
Bk. 97	Pl. 53		
Excavation			
Paving			
Ret. Plank 2' x 8'			
Curb Concrete			
Ret. Stone			
Circles			

Bk.	Pl.	LOTS	CITY
Bk. 97	Pl. 53		
Excavation			
Paving			
Ret. Plank 2' x 8'			
Curb Concrete			
Ret. Stone			
Circles			

Lot Length	City Length	Total
4692 31 1/2	430	5122 31
2346 15	215	2561 15

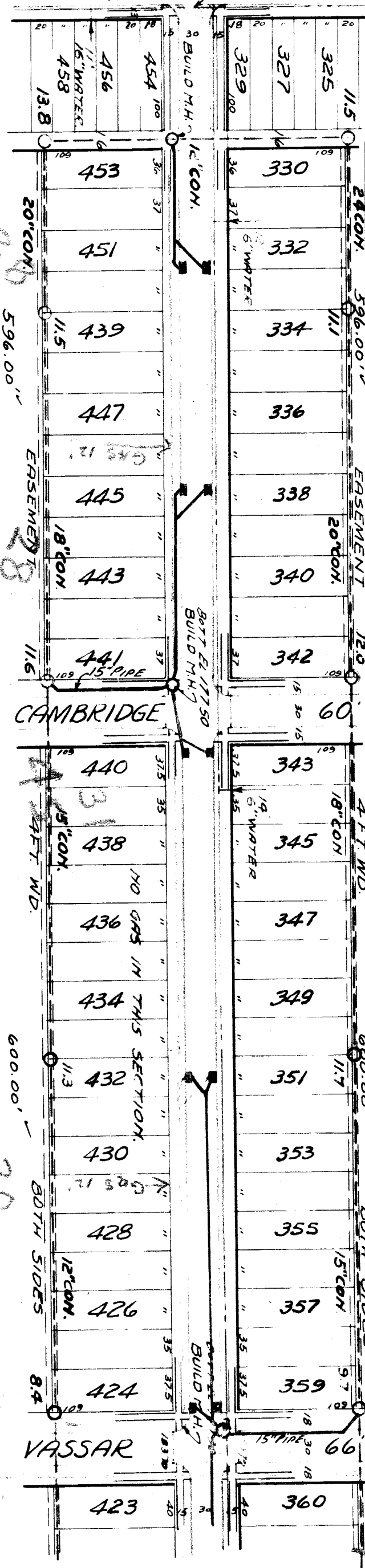
Designed by	<i>J. Mansfield</i>
Drawn by	<i>J. Mansfield</i>
Traced by	<i>J. Mansfield</i>
Checked by	<i>J. Mansfield</i>
Scale: Hor. 1" = 100'	
Ver. 1" = 20'	
Date	6-16-39

Approved	
Engineer of Streets	
Asst. City Engineer	

Card No.	
Index Topo No.	63 105
Record No.	

Department of Public Works, City Engineers Office, Detroit, Mich.
STREET PAVING PLAN
MANSFIELD
7 MILE
PEMBROKE

SW. # 1
 2



- BENCH MARKS.**
- BM-#104-203 = SPIKE IN N SIDE OF 24" MAPLE TREE, S.E. COR. RUTHERFORD
 - BM-#104-204 = SPIKE IN N.W. COR. MANSFIELD
 - BM-#104-205 = SPIKE IN N.W. COR. MANSFIELD
 - BM-#104-206 = SPIKE IN W.B. GATE, N.W. COR. MANSFIELD
 - BM-#104-207 = SPIKE IN W.B. GATE, W. SIDE OF MANSFIELD
 - BM-#104-208 = SPIKE IN W.B. GATE, W. SIDE OF SEVEN MILE RD.
 - BM-#104-209 = SPIKE IN W.B. GATE, N.W. COR. CAMBRIDGE
 - BM-#104-210 = SPIKE IN W.B. GATE, N.W. COR. VASSAR
 - BM-#104-211 = SPIKE IN W.B. GATE, N.W. COR. VASSAR
 - BM-#104-212 = SPIKE IN W.B. GATE, N.W. COR. VASSAR

