

**DEPARTMENT OF PUBLIC WORKS DETROIT**  
 CITY ENGINEER'S OFFICE - DIVISION OF PAVING DESIGN  
**STREET PAVING PLAN**

NAME OF STREET: **MAJESTIC**

FROM: **EPL OF BEAVERLAND**

TO: **WPL OF BRAMELL**

ASSIGN NO. **315-22**  
 SHEET **1** OF **1** SHEETS  
 WIDTH **30'**

CONTRACT APPROVAL: **WEBER REQUEST**

TYPE OF PAVEMENT: **ONE-COURSE CONCRETE - INTERNAL CURB**

**BENCH MARKS**  
 DLBM# 117-250 MAJESTIC & W. PARKWAY N.E. COR  
 ARROW ON HYD. BEAVERLAND & MAJESTIC  
 ARROW ON HYD. BRAMELL & MAJESTIC  
 PLEM# 117-250A N.W. COR WARREN & BRAMELL

**NOTE**  
 FOR SYMBOLS (A) ETC SEE STD. DRAW'G. C-3217  
 CONTROL MAINTAIN BY EXIST'G. RETURNS

SEWER *M. McGee & 2/11/15*

REVISIONS			
SUPPLEMENTARY DETAILS			
C-324A	C-390	C-587	C-739B
C-435	C-524	C-733	C-938
C-126A	C-585	C-739	C-160B
C-327	C-586	C-739A	C-1783

**NOTE:**  
 BEFORE STARTING CONSTRUCTION CONTRACTOR MUST CHECK WITH UTILITIES FOR LOCATIONS OF EXISTING STRUCTURES WHETHER OR NOT INDICATED ON PLANS.

**PLAN SCALE DISTORTED**  
 LOTS & ALLEYS, 1" = 100'  
 STREET WIDTHS, 1" = 50'

**DRAINAGE COMPLETED** *G-8-05*  
**PAVING COMPLETED**

QUANTITIES	ESTIMATED	FINAL	
		LOTS	CITY
EXCAVATION CU. YDS.			
NEW CURB LIN. FT.			
PAVING SQ. YDS.			
SIDEWALK SQ. FT.			
MANHOLES ADJUST			
BASINS CONSTRUCT			
SEWERS, 12" LIN. FT.			

HOR. SCALE 1" = 100'	BOOK 1816	PAGE 8
VER. SCALE 1" = 2'	LEVELS 17-3-54	DATE DRAWING 7-18-55
PLAN <i>J.K.</i>	PROFILE <i>J.K.</i>	COMPUTED
CHECKED <i>J.K.</i>	GRADE <i>AB.</i>	CHECKED
LOTS 2L	500	LENGTH 150
CITY 2L	36	LENGTH 18
TOTAL 2L	536	LENGTH 168
CITY		

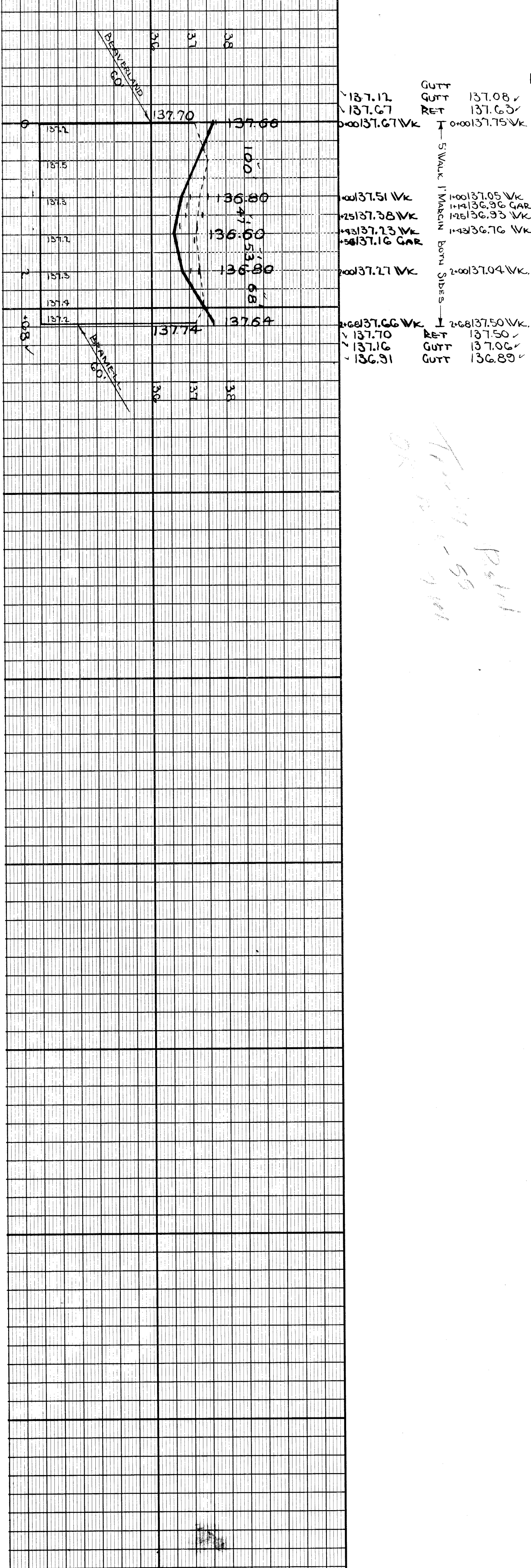
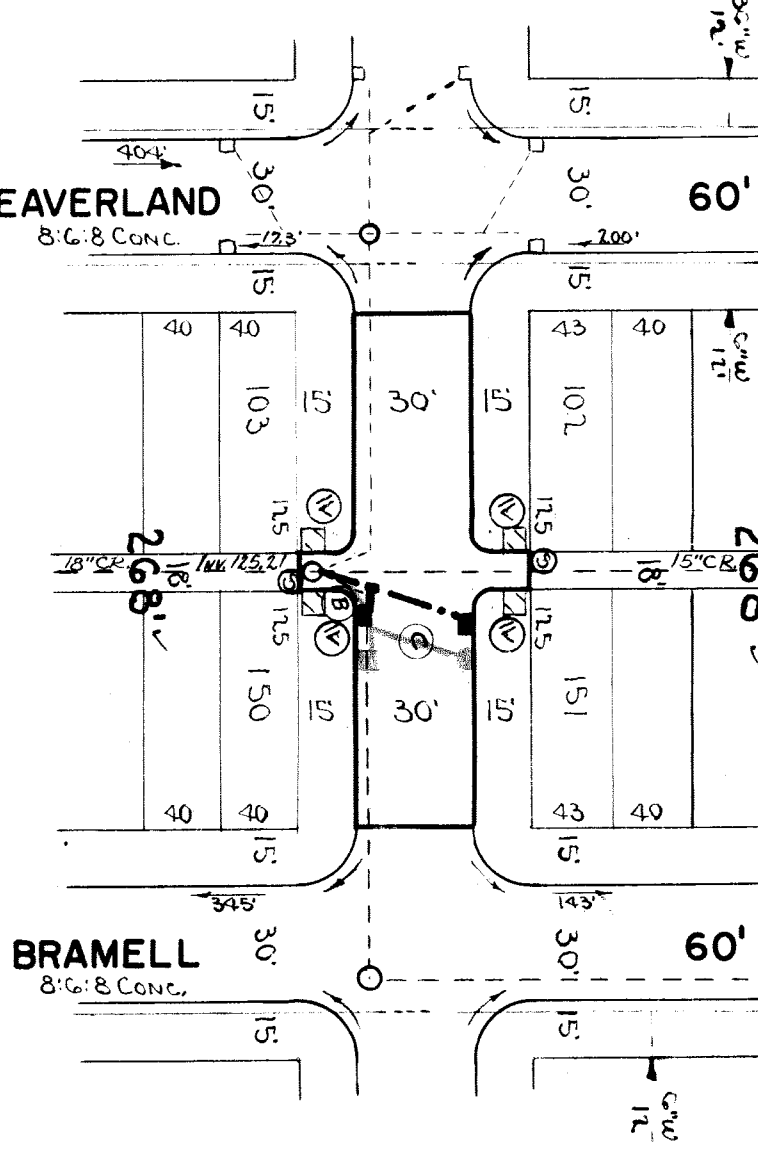
DESIGNED BY: *James W. Boyd*

DRAWN BY: *James W. Boyd*

TRACED BY: *JE. BEVIN*

CHECKED BY: *W. J. Warren*

APPROVED: *W. J. Warren*  
 ENGINEER OF STREETS  
 CITY ENGINEER



GUTT 137.08 ✓  
 GUTT 137.63 ✓  
 RET 137.67 ✓  
 RET 137.67 Wk

5' WALK 1' MARGIN BOTH SIDES

100137.51 Wk  
 125137.38 Wk  
 143137.23 Wk  
 158137.16 GAR

100137.05 Wk  
 114136.96 GAR.  
 125136.93 Wk.  
 143136.76 Wk.

100137.27 Wk  
 1268137.66 Wk  
 137.70  
 137.16  
 136.91

268137.50 Wk.  
 137.50 ✓  
 137.06 ✓  
 136.89 ✓

*OK  
 7/11/55  
 P. 111*

**ELEV.**  
 141.357 ✓  
 140.78 ✓  
 140.44 ✓  
 136.877 ✓