

DEPARTMENT OF PUBLIC WORKS DETROIT  
 CITY ENGINEERS' OFFICE - DIVISION OF PAVING DESIGN  
**STREET PAVING PLAN**

CARD NO.

INDEX TOPO NO.

RECORD NO.

NAME OF STREET: **MADISON** FROM **W.P.L. OF RIVARD** TO **W.P.L. OF RUSSELL**

ASSIGN. NO. **470** SHEET NO. **6** OF **27** SHEETS

SEWER REVISIONS			
REVISIONS DIMENSION CHANGES MADE TO CONFORM WITH PLAN 2-18-51 & 5			
SUPPLEMENTARY DETAILS			
C-324A	C-390	C-887	C-739B
C-325	C-524	C-733	C-938
C-326A	C-585	C-739	C-1608
C-327	C-586	C-739A	

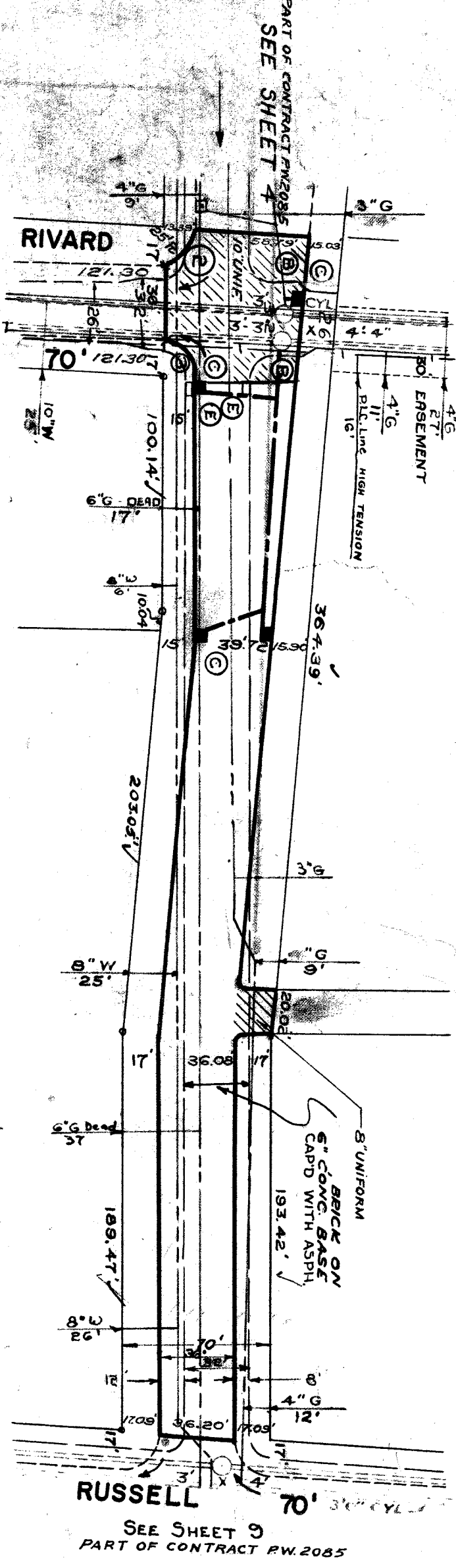
NOTE: BEFORE STARTING CONSTRUCTION CONTRACTOR MUST CHECK WITH UTILITIES FOR LOCATIONS OF EXISTING STRUCTURES WHETHER OR NOT INDICATED ON PLANS.

PLAN SCALE DISTORTED  
 LOTS & ALLEYS: 1" = 60'  
 STREET WIDTHS: 1" = 60'  
 DRAINAGE COMPLETED  
 PAVING COMPLETED

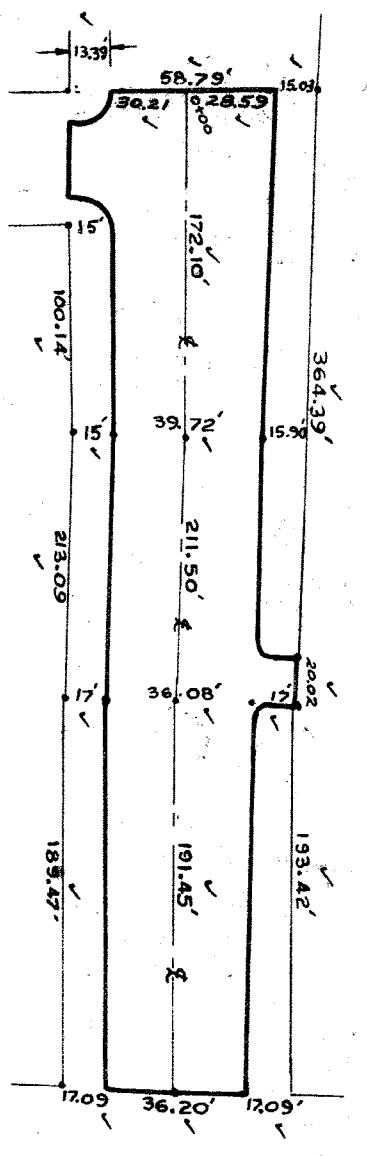
QUANTITIES	ESTIMATED		FINAL	
	LOTS	CITY	LOTS	CITY
EXCAVATION CU. YDS.				
NEW CURB LIN. FT.				
PAVING SQ. YDS.				
ADJUST SQ. FT.				
MANHOLES CONSTRUCT				
BASINS ADJUST				
SEWERS 12" CONSTRUCT				

HOR. SCALE 1" = 60'	BOOK 1707 PAGE 19-21
VER. SCALE 1" = 2'	DATE LEVELS SEPT. 52
PLAN CHECKED <b>K</b>	COMPUTED <b>G.B.</b>
PROFILE CHECKED <b>S.L.A.</b>	CHECKED <b>M.E.</b>
CITY TOTAL 21	LENGTH 5750.5
LOT TOTAL 21	LENGTH
CITY TOTAL 21	LENGTH
LOT TOTAL 21	LENGTH

DESIGNED BY **Ericson**  
 DRAWN BY **Krum**  
 CHECKED BY **BENT**  
 APPROVED **W. Russell**  
 ENGINEER OF STREETS  
 CITY ENGINEER



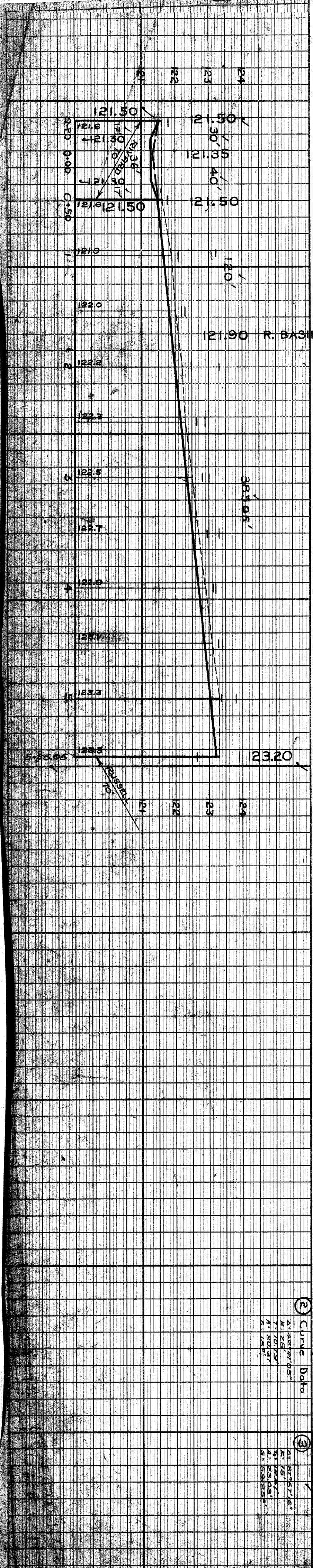
121.80	WK		
121.78	WK	2 - 18" x 12" Y BASINS	
122.10	WK	GR	123.7
122.30	WK	GR	122.2
122.49	WK	GR	123.3
122.9	GR	GR	122.8
123.0	GR	WK	122.80
123.3	GR	WK	122.95
123.2	GR	WK	123.12
123.4	GR	WK	123.28
123.8	GR	WK	123.36
123.9	GR	WK	122.62



LEGEND  
 PROPERTY LINES  
 TO BE REMOVED  
 PRIVATE PROP. OR ANOTHER SHEET  
 PROP. EASEMENT  
 PROP. PAVEMENT

NOTE  
 BENCH MARKS  
 ON HYD. SE. COR. RIVARD & MADISON  
 ON W.T. SE. COR. TELFORD SCHOOL, NW COR. MADISON & RUSSELL

FOR SYMBOLS (R) ETC., SEE STD. DET. DRWG. C-327



(2) CURVE DATA  
 A1 451 777.05'  
 R 25  
 T1 700.79'  
 A1 201.97'  
 S1 128

(3)  
 A1 879 571.6'  
 R 15  
 T1 700.79'  
 A1 201.97'  
 S1 128