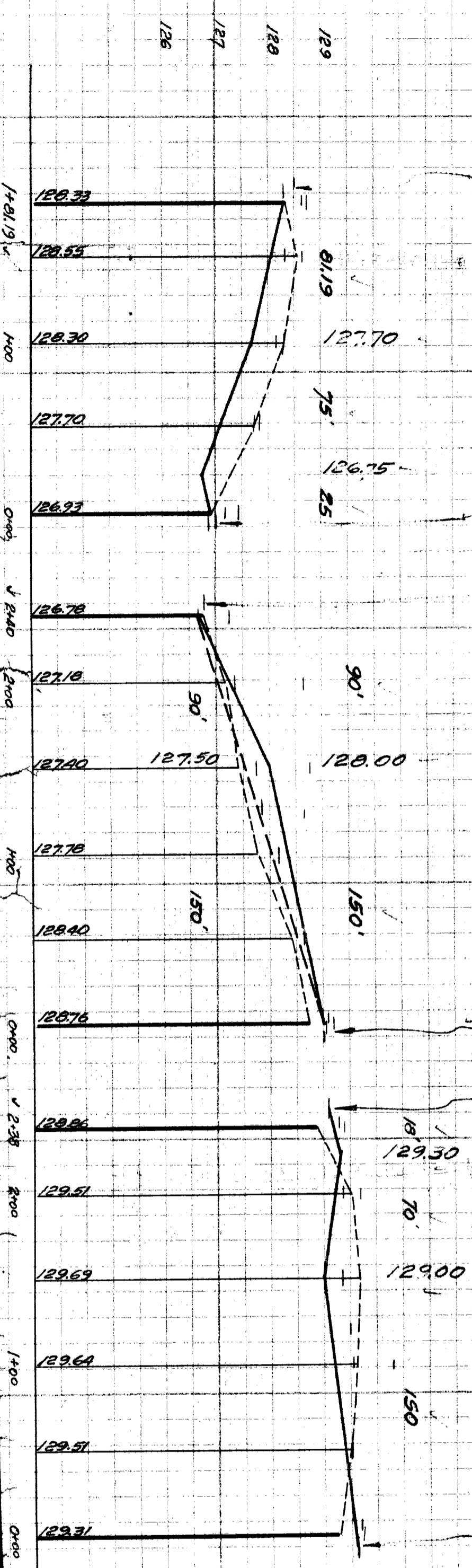


SEWER	INDEXED	REVISIONS:	JOB NO.	PROGRESS	QUANTITIES	LOTS	CITY	LOTS	CITY	PLAN	CHECKED	DATE	ROOM	DESIGNED BY	ENGINEER OF STREETS	ASSIST. CITY ENGINEER
			BLUE PRINT ISSUED FOR:	START	EXCAVATION					M/M	M/M	1-25-44	32	M.J. MAGRAN		
			DATE	FINISH	STRAIGHT CURB NEW					M/M	M/M					
					OLD CURB RESET											
					CIRCULAR CURB											
					PAVING											
					CONCRETE BASE											

RESET CURBS & CIRCLES FOR 30' RETURN & CONSTRUCT NEW 15" CIRCLE - 8" CONC. BASE - 3/8" SH ASPH. TOP IN WING STRIPS

ESPER AVENUE
MORROW CIRCLE
262



128.17 CURB 128.57 CLWB
128.48 RETURN 128.31 RETURN
128.65 W 128.75 W

128.35 W 128.65 W

128.15 W 128.30 W

127.85 W 127.75 W

127.45 W 127.20 W
126.94 RETURN 126.86 CURB
126.86 CURB 126.94 RETURN
127.25 W 127.15 WALK

127.35 W 128.65 GR.

127.75 W 128.75 W

127.85 W 128.65 W

128.15 W 128.65 W

129.11 W 129.21 GR.
129.05 RET. 129.04 RETURN
128.86 CURB 128.76 CURB

128.91 CURB 128.94 CURB
129.09 RET. 129.10 RETURN
129.30 W 129.41 GR.

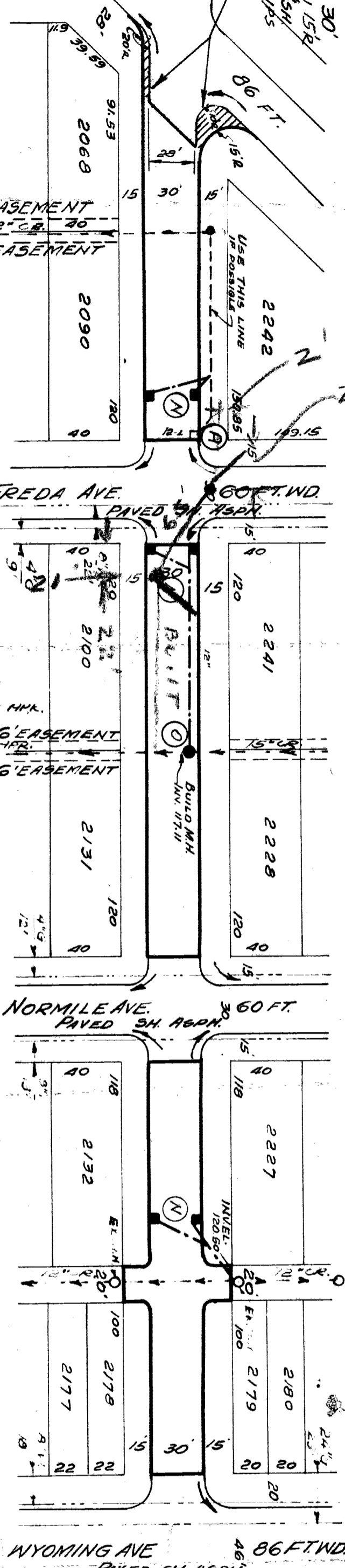
129.36 W 130.21 GR.

129.36 W 129.71 GR.

129.56 W 130.31 GR.

129.51 W 129.71 GR.
129.56 W 130.31 GR.

129.71 W 129.71 GR.
129.61 RET. 129.58 RETURN
129.30 CURB 129.30 CURB



BENCH MARKS
ARROW NE TOP OF HYD N.W. MACKENZIE & KENTUCKY 131.62
ARROW NE " " " " NE COR. NORMILE & MACKENZIE 132.18
SPIKE ON P.L. POLE SE COR. ESPER & MACKENZIE 139.29

✓ AT PTS. (M) CONSTR. 6 STD. 18" DIA. Y CATCH BASINS
AND CONNECT TO EXISTING OUTLETS AS SHOWN.
✓ AT PT. (P) ABANDON EXISTING 18" L. BASIN.
✓ AT PT. (Q) BUILD STD. M.H.

No Drainage 1-25-44

DEPARTMENT OF PUBLIC WORKS DETROIT
CITY ENGINEERS OFFICE - DIVISION OF PAVING DESIGN
STREET PAVING PLAN
MACKENZIE AVE.

NAME: M.L. WYOMING AVE.
STREET: MACKENZIE AVE.
FROM: E.L. ESPER AVE.
TO: [Blank]
TYPE OF PAVEMENT: [Blank]
WIDTH: 30'

CARD NO.	INDEX NO.	INDEX TOPO NO.	RECORD NO.	NAME OF STREET	FROM	TO	TYPE OF PAVEMENT	WIDTH
	55	6		M.L. WYOMING AVE.	E.L. ESPER AVE.			30'