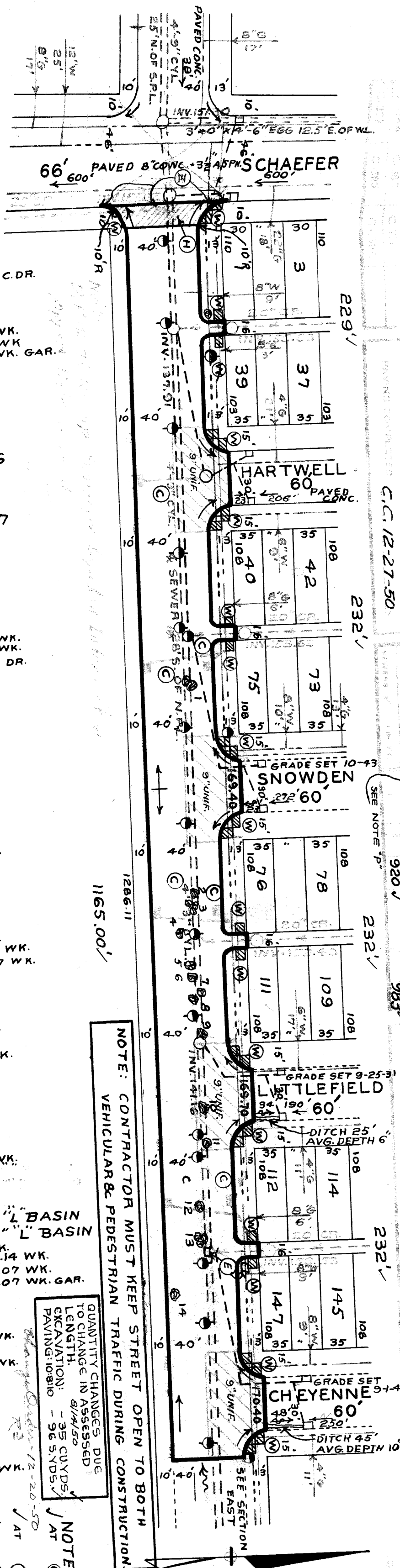


OLD MAP 12-20-43  
 REVISION IN QUANTITIES & ASSESSED  
 LENGTH DUE TO ELIMINATION OF  
 PENN RR SIDING FROM CONTRACT 50-19

1" = 100'  
 1/4" = 50'

| NO. | STATION | AREA  | VALUATION |
|-----|---------|-------|-----------|
| 5   | 822     | 743   | 5787      |
| 6   | 245     | 10395 | 743       |
| 7   | 100     | 862   | 245       |
| 8   | 1398    | 100   | 862       |
| 9   | 1381    | 862   | 245       |
| 10  | 4783.47 | 1381  | 862       |
| 11  | 352.00  | 1381  | 862       |
| 12  | 1517.44 | 1381  | 862       |
| 13  | 2561.74 | 1381  | 862       |
| 14  | 2412.94 | 1381  | 862       |
| 15  | 17600   | 1381  | 862       |
| 16  | 12689.4 | 1381  | 862       |
| 17  | 1517.44 | 1381  | 862       |
| 18  | 2561.74 | 1381  | 862       |

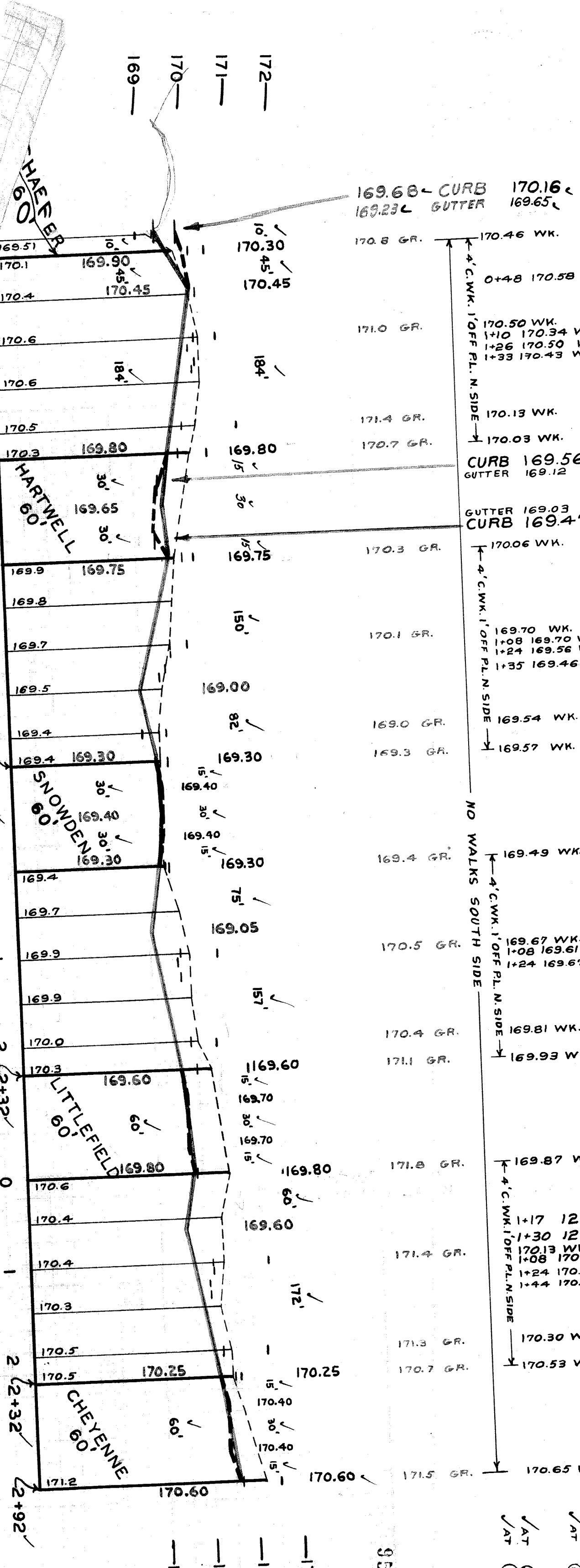
5. EDWARDS  
 50-19  
 68 8 4  
 10:8:10  
 9"  
 10' W. OF E.P.L. OF SCHAEFER  
 E.P.L. OF CHEYENNE  
 40'  
 325 A-14  
 1191



NOTE: CONTRACTOR MUST KEEP STREET OPEN TO BOTH VEHICULAR & PEDESTRIAN TRAFFIC DURING CONSTRUCTION

QUANTITY CHANGES DUE TO CHANGE IN ASSESSED LENGTH:  
 EXCAVATION: 35 CU YDS.  
 PAVING: 10810

NOTE: (SHEET 1 OF 2)  
 CONSTRUCT 7 STD. PIPE CATCH BASINS WITH STD. CLASS 'C' GRATES AS REQUIRED. CONNETT TO C-524. CONCRETE SHOWN. SEE STD. DRAWINGS. C-324 & C-524. CONCRETE ABANDON 2 EXISTING PIPE BASKETS WITH BROKEN ASPHALT CONCRETE & REMOVE OR PATCH TO MEET NEW GRADES. CONTRACTOR SHALL REMOVE CURB PATCH TO MEET TOTALS FOR COST. CONCRETE & FILL WITH COLD UNDER 4" SIDEWALK. 10 CU YDS. INCLUDED UNDER 4" SIDEWALK.  
 CONSTRUCT 1260 SQ. FT. OF STANDARD CURB.  
 REMOVE 33 FT. OF EXISTING SEWER MANHOLES. RECONSTRUCT ADJUST TOPS OF 7 EXISTING SEWER MANHOLES.  
 ADJUST TOPS OF 2 WATER MAINS WHERE SHOWN. ADJUST TOPS OF 2 WATER MAINS WHERE NOT SHOWN. CONTRACTOR SHALL CONSTRUCT UNIFORM DITCHES WHERE SHOWN ON PLAN TO AVERAGE DEPTH UNDER PROPOSED PAVEMENT ON FIELD.  
 CONTRACTOR SHALL CONSTRUCT UNDER PROPOSED PAVEMENT FOR COST. BACKFILL SEWER TRENCHES WITH APPROVED SAND GRAVEL MATERIAL AS REQUIRED. WITH APPROVED SAND GRAVEL MATERIAL AS REQUIRED. TAMP WITH APPROVED EARTH LAYERS 12-4" TO 12" 3-12" TO 18" & 4-18" TO 42" TREES AS INDICATED.  
 CONTRACTOR SHALL GRUB & REMOVE ALL PAVED SURF SHALL BE 4-18" TO 42" TREES AS INDICATED FOR A DISTANCE PER TREE.  
 DIRT ROADWAYS & ALLEYS AT ENDS OF PAVEMENT SHALL BE GRADED BACK & STONED TO GRADES. ALL ADJUSTED UNDER EXCAVATION TOTALS CASTINGS SALVAGED BY THE ENGINEER. CONTRACTOR SHALL FURNISH EXCEPT PERMITTED SO USED WILL BE THE BASINS & MANHOLES EXCEPT PERMITTED SO USED OTHERWISE AT ARE AVAILABLE & THEIR USE EACH CONTRACT PRICE. D.P.W. YARDS MADE FROM THE ORIGINAL BE HAULED TO D.P.W. YARDS SALVAGED CASTINGS & STONED INTERSECTIONS TO BE SEPARATE TYPE STATE FAIR & JOHN INTERSECTIONS AS OTHERWISE NOTED. ALL CURBS WITHIN STREET III, EXCEPT AS OTHERWISE NOTED. II OR INTEGRAL TYPE III.



95014

TREES TO BE REMOVED

| NO. | STA. | TREES | SIZE | KIND | SO. OF N.L. | NO. STA. | TREES | SIZE | KIND | SO. OF N.L. |     |
|-----|------|-------|------|------|-------------|----------|-------|------|------|-------------|-----|
| 1   | 170  | 2     | 15"  | ELM  | 30'         | 8        | 176   | 1    | 8"   | ELM         | 30' |
| 2   | 170  | 1     | 12"  | ASH  | 30'         | 9        | 176   | 1    | 16"  | ELM         | 30' |
| 3   | 170  | 1     | 12"  | ASH  | 30'         | 10       | 176   | 1    | 30"  | ELM         | 30' |
| 4   | 170  | 3     | 8"   | ELM  | 30'         | 11       | 176   | 1    | 20"  | ELM         | 30' |
| 5   | 170  | 1     | 12"  | ELM  | 30'         | 12       | 176   | 1    | 20"  | ELM         | 30' |
| 6   | 170  | 1     | 10"  | ELM  | 30'         | 13       | 176   | 1    | 12"  | ELM         | 30' |
| 7   | 170  | 1     | 20"  | ELM  | 30'         | 14       | 176   | 1    | 12"  | ELM         | 30' |