

CITY ENGINEERS OFFICE - DIVISION OF PAVING DESIGN

STREET PAVING PLAN

LYNDON

4'E. OF E.P.L. OF KENTFIELD ✓

8'E. OF W.P.L. OF EVERGREEN ✓

FORCED PAVING C.C. RESOLUTION 5-25-48
 BENCH MARKS 4217

9" UNIF. AT ST. INTERSECTIONS ✓

DATE 4-20-48

CONTRACT NO. P.W. 591 & P.W. 592

CONTRACT NO. P.W. 591

NOTES

- ① ADJUST TOPS OF 5 EXISTING S.M.H. BASINS WITH FLAT TYPE GRATES & FRAMES.
- ② CONSTRUCT 4 STD. 18"x18" FLAT TYPE BASIN & CONNECT TO EX. OUTLET AS SHOWN.
- ③ RECONSTRUCT 1 EXISTING S.M.H. BASIN AT CURB LOCATION WITH 1 STD. 18"x18" FLAT TYPE. CONNECT TO EXISTING OUTLET AS SHOWN.
- ④ CONTRACTOR SHALL REMOVE CONCRETE HEADER & BROKEN ASPHALT BACK OF JUNCTION AS REQUIRED & FILL WITH COLD PATCH TO MEET NEW GRADE. 20 CU. YDS. HAS BEEN INCLUDED UNDER EXCAVATION TOTAL FOR COU.
- ⑤ WIDEN EXISTING 36' RETURN WITH TYPE II CURBS TO 40' & PAVE WINGS/STRIPS WITH 8" CONC. + 3/8" ASPH.
- ⑥ CONTRACT 528 SQ. FT. OF STANDARD 4" SIDE WALK.
- ⑦ ADJUST TOPS OF 7 WATER OR SEWER MANHOLE.
- ⑧ BACKFILL SEWER PIPE TRENCHES UNDER PROPOSED PAVEMENT WITH APPROVED SAND-GRAVEL MATERIAL.
- ⑨ DIAT ROADWAY AT END OF PAVEMENT SHALL BE GRADED BACK & JUMPED 6" DEEP UNIFORM, FOR A DISTANCE OF 10' TO MEET EX. GRADE. 36 CU. YDS. HAS BEEN INCLUDED UNDER EXCAVATION TOTAL FOR COU.
- ⑩ CONTRACTOR SHALL FURNISH ALL NECESSARY MATERIALS, INCLUDING CASTINGS & SHALL HALL HULL ALL SALVAGEABLE MATERIALS TO D.P.W. YARD AT STATE FAIR & JOHN R. ST.
- ⑪ ALL CURBS WITHIN STREET INTERSECTIONS TO BE SEPARATE TYPE II OR INTEGRAL TYPE III. UNLESS AS OTHERWISE NOTED.

CONTRACT PW-592 IS STRICTLY A Non-Assessable Job

ADJUST TOPS OF 3 WATER OR SEWER MANHOLES.

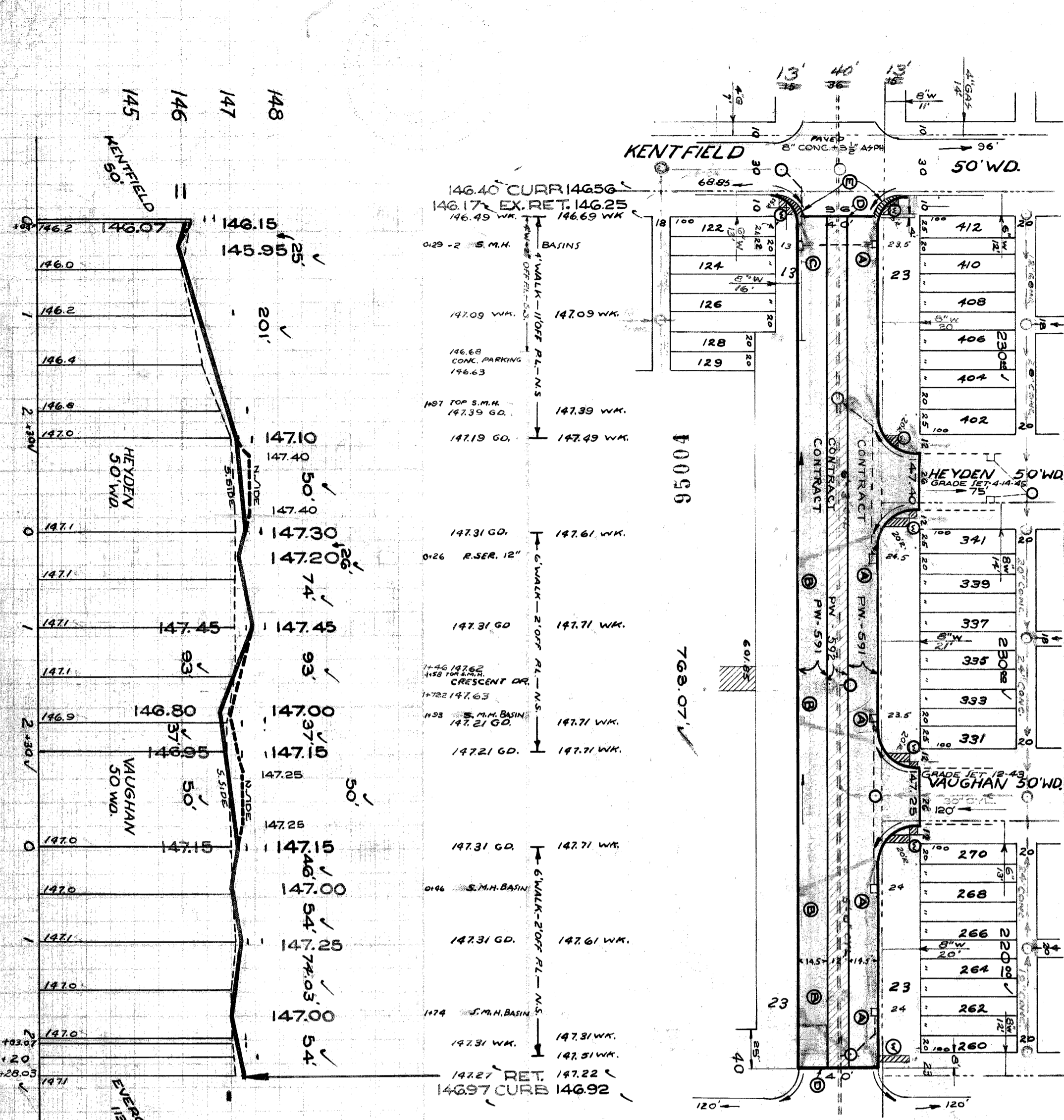
CONTRACTOR SHALL FURNISH ALL NECESSARY MATERIALS INCLUDING CASTINGS & SHALL HULL ALL SALVAGEABLE MATERIALS TO D.P.W. YARD AT STATE FAIR & JOHN R. STS.

CONTRACTOR SHALL REMOVE CONCRETE HEADER & BROKEN ASPHALT BACK OF JUNCTION AS REQUIRED & FILL WITH COLD PATCH TO MEET NEW GRADE. 20 CU. YDS. IS INCLUDED UNDER EXCAVATION TOTALS FOR COST.

NOTE: IF THE SAME BIDDER IS LOW ON CONTRACT "A" & CONTRACT "B" THE TYPICAL STANDARD 40 FT. CROSS SECTION (SEE SCHEME 1-1 AND THE CONTRACTOR FOR CONTRACT "B" SHALL NOT BE PERFORMED UNTIL CONTRACT "A" HAS BEEN COMPLETED.

QUANTITIES

| QUANTITIES | ESTIMATED | FINAL |
|---------------------------|-----------|-------|
| | LOTS | CITY |
| EXCAVATION CU. YDS. | 348 | 348 |
| NEW CURB LIM. FT. | 912 | 912 |
| PAVING 10.50" ASP. 5" 1/2 | 133 | 133 |
| SIDEWALK 5" 9 FT. | 3 | 3 |
| MANHOLES ADJUST CONSTRUCT | | |
| BASINS CONSTRUCT | | |
| SEWERS 12" LIM. FT. | | |
| SEWERS 16" LIM. FT. | | |
| SEWERS 20" LIM. FT. | | |
| SEWER 24" LIM. FT. | | |



REVISIONS

| NO. | DESCRIPTION | DATE |
|-----|---------------------------------|---------|
| 1 | PLAN SCALE CORRECTED TO 1"=100' | 5-13-39 |
| 2 | REVISIONS | |
| 3 | REVISIONS | |
| 4 | REVISIONS | |
| 5 | REVISIONS | |
| 6 | REVISIONS | |

CONTRACT PW-591

| ESTIMATED | FINAL |
|-----------|-------|
| 10 | 10 |
| 10 | 10 |
| 10 | 10 |
| 10 | 10 |
| 10 | 10 |
| 10 | 10 |
| 10 | 10 |
| 10 | 10 |
| 10 | 10 |
| 10 | 10 |

APPROVED

[Signature] ASSIST. CITY ENGINEER

DRAWN BY BEHM

CHECKED BY Section RR

DATE MAY 1948

