

OLD MAP 1934			
C-324A	C-190	C-521	C-7362
C-323	C-134	C-733	C-938
C-326A	C-697	C-739	C-1608
C-327	C-585	C-739A	

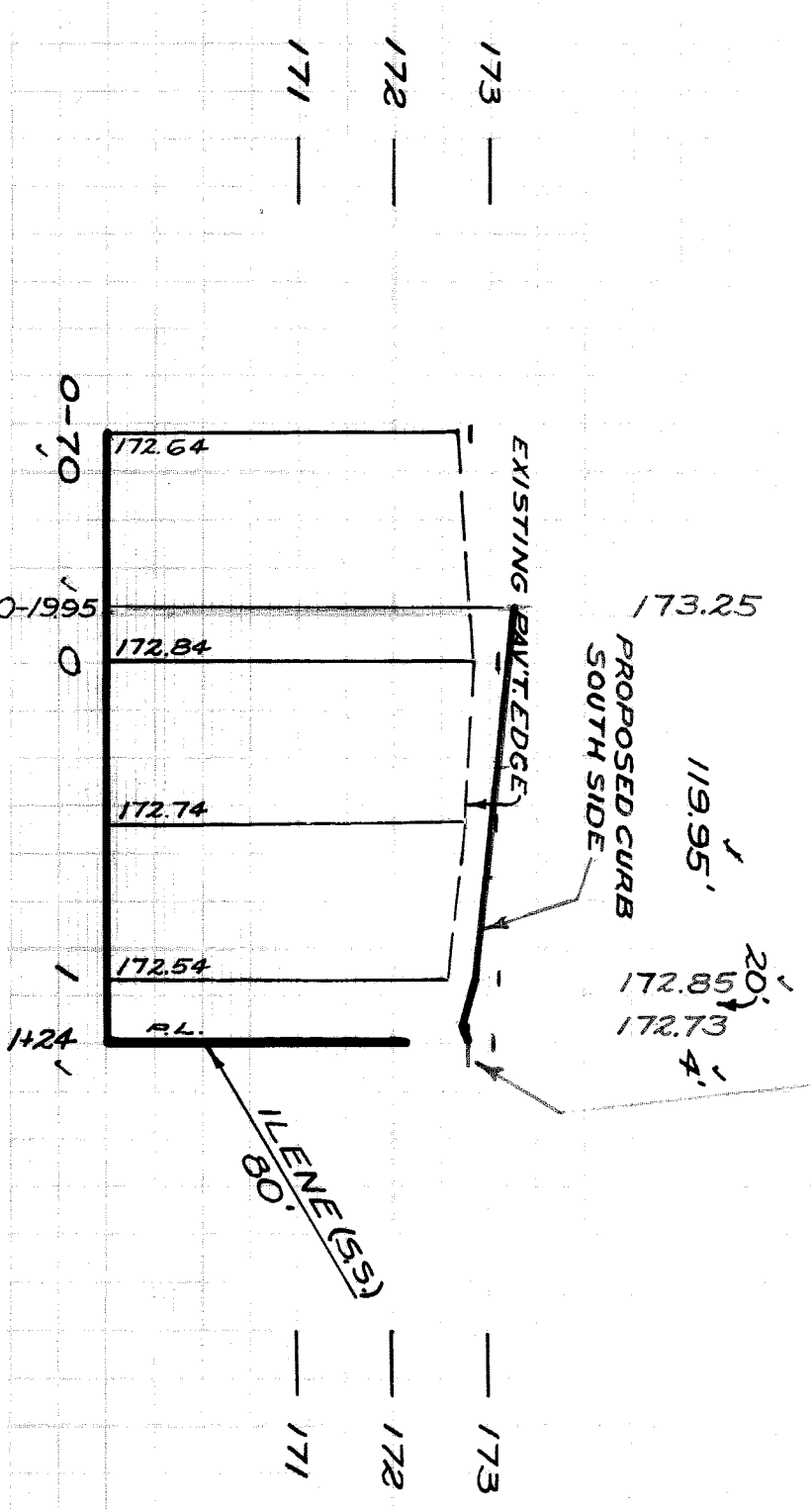
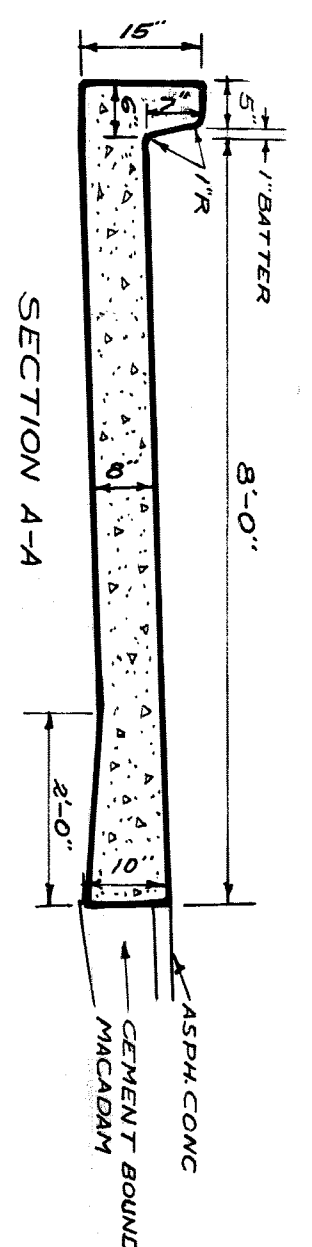
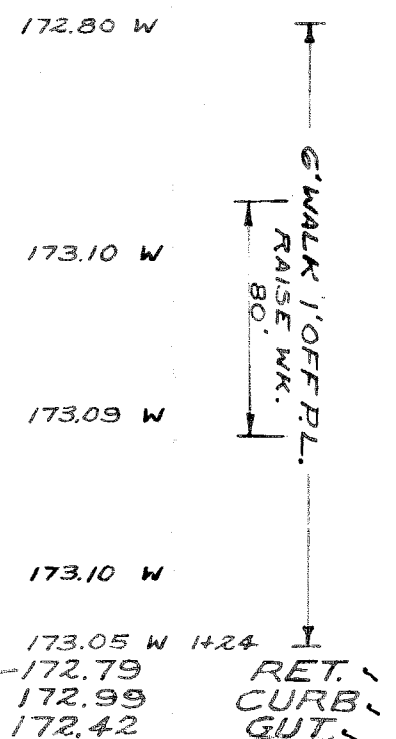
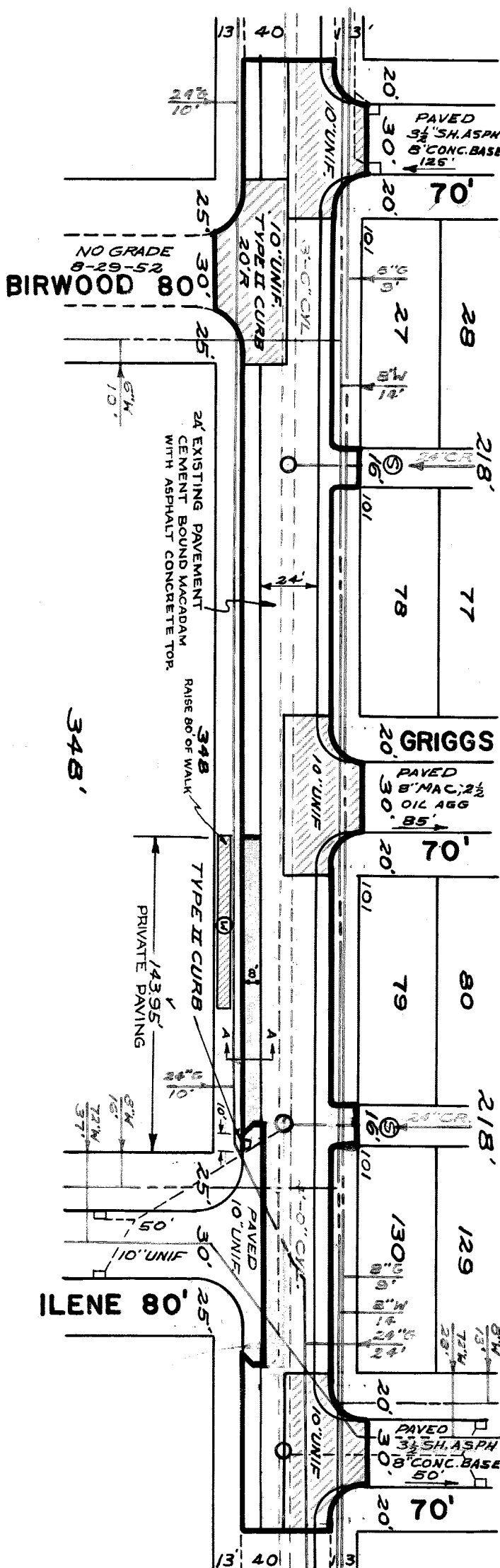
NOTE:
BEFORE STARTING CONSTRUCTION CONTRACTOR MUST CHECK WITH UTILITIES FOR LOCATIONS OF EXISTING STRUCTURES, WATERS, OR NOT INDICATED ON PLANS.
PLAN SCALE DISTORTED
LOTS & ALLEYS: 1" = 60'
STREET WIDTHS: 1" = 60'
DRAINAGE COMPLETED
PAVING COMPLETED C.G. 11-5-52

QUANTITIES	ESTIMATED	FINAL
SECTION CUTS		
NEW CURB		
PAVING		
STODWALK		
MANHOLES		
BASES		
SEWER 12"		

MIN. SCALE	1" = 60'	BOOK	1719	PAGE	48
VER. SCALE	1" = 2'	LEVELS	9-24-52		
DATE DRAWING	9-30-52				
PLAN	J.K.	PROFILES	J.K.	COMPUTED	
CHECKED	J.E.	GRADE	J.E.	CHECKED	
DATE		LENGTH			
TOTAL		LENGTH			
CITY		LENGTH			
CITY		LENGTH			

DESIGNED BY: J. KING
DRAWN BY: J. KING
CHECKED BY: BEHM
APPROVED BY: M. W. [Signature]
ASSISTANT ENGINEER

DEPARTMENT OF PUBLIC WORKS DETROIT
CITY ENGINEERS OFFICE - DIVISION OF PAVING DESIGN
STREET PAVING PLAN
STREET: LYNDON (WIDENING SOUTH SIDE)
FROM: S.W.P.L. OF ILENE
TO: 140' W. OF S.W.P.L. OF ILENE
SHEET 1 OF 40



NOTE:
FOR SYMBOLS @ ETC. SEE STANDARD DETAIL DRAWING C-327

BENCH MARKS
ELEV.
B.M. ARR. ON HYD. NW COR. LYNDON & ILENE 175.45
B.M. ARR. ON HYD. NW COR. LYNDON & GRIGGS 175.79
B.M. ARR. ON HYD. NW COR. LYNDON & BIRWOOD 174.52
P.L. B.M. 9-2514 NE COR. LYNDON & BIRWOOD 170.996