

DEPARTMENT OF PUBLIC WORKS DETROIT
CITY ENGINEER'S OFFICE - DIVISION OF PAVING DESIGN
STREET PAVING PLAN

NAME OF STREET: **LYNDON**
 FROM: **HUBBELL**
 TO: **GREENFIELD**

TYPE OF PAVEMENT: **CONCRETE**
 TRAFFIC AID: **OCT-5-1434**

INDEX NO.: **6884**
 TOPG. NO.: **6884**
 RECORD NO.: **6884**

NUMBER OF SHEETS: **2**
 SHEET NO.: **2**

DESIGNED BY	<i>J. J. DeMonaco</i>
DRAWN BY	<i>J. J. DeMonaco</i>
TRACED BY	<i>J. J. DeMonaco</i>
CHECKED BY	<i>J. J. DeMonaco</i>
APPROVED	
ENGINEER OF STREETS	
ASS'T CITY ENGINEER	

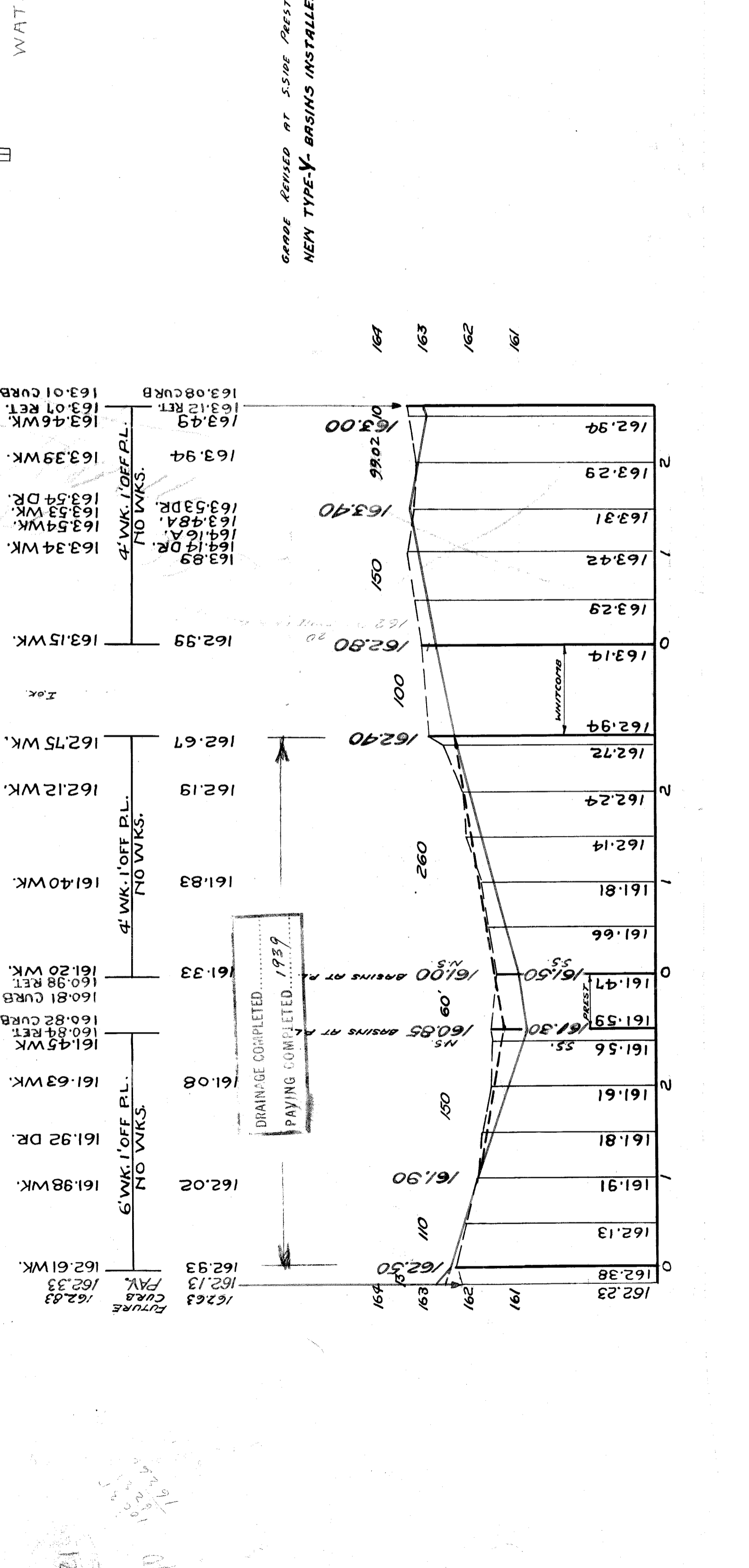
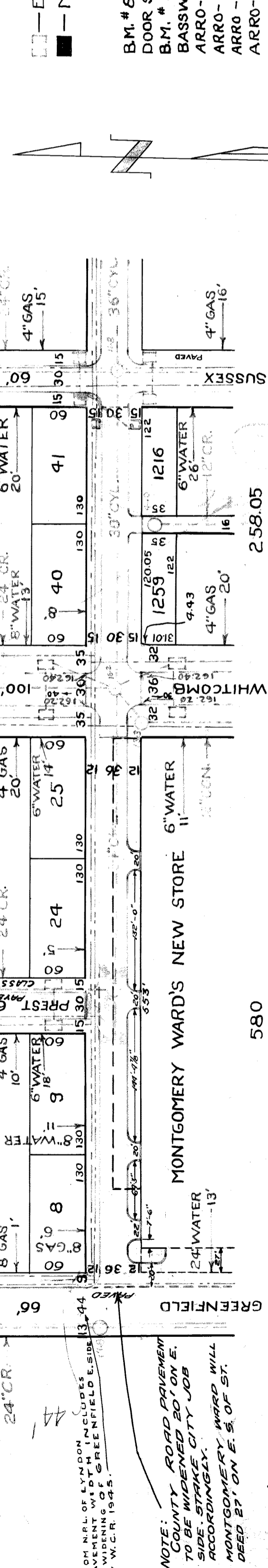
HOR. SCALE	1" = 100'
VER. SCALE	1" = 2'
DATE	8-24-39
BOOK	1954 PAGE 4
PLAN	J.F.D.
CHECKED	16
PROFILE	J.F.D.
GRADE	16
COMPUTED	9/16/39
CHECKED	9/16/39
APPROVED	

EXCAVATION	
STRAIGHT CURB NEW	
OLD CURB RESET	
CIRCULAR CURB	
PAVING	
CONCRETE BASE	

QUANTITIES	
EXCAVATION	
STRAIGHT CURB NEW	
OLD CURB RESET	
CIRCULAR CURB	
PAVING	
CONCRETE BASE	

PROGRESS	
START	
FINISH	
DATE	10-23-39
DEPT. OF WATER SUPPLY	
GAS CO.	

SEWER: **25-96**
 INDEXED: **10-539**
 REVISIONS:



□ — EXISTING POOLS & BASINS
 ■ — NEW
 BENCH MARKS

B.M. # 84201 E.S. GREENFIELD, 100' N. OF KENDALL - X ON
 DOOR SILL OF CREAMERY BLDG. 157.580
 B.M. # 84302 - 5' E. OF COYLE, 90' S. OF LYNDON SPK. IN 24" 165.197
 BASSWOOD TREE 165.42
 ARRO-HYD. N.E. COR. GREENFIELD & LYNDON 164.81
 ARRO - HYD. N.E. COR. PREST & LYNDON 166.22
 ARRO - HYD. N.E. COR. WHITCOMB & LYNDON 166.39

WATER MAINS O.K. 10-20-39

CONTRACTOR MUST CHECK WITH UTILITIES BEFORE BEGINNING CONSTRUCTION, ON LOCATION OF EXISTING STRUCTURES, WHETHER SHOWN ON PLANS OR NOT

DRAINAGE COMPLETED 10-25-39
 PAVING COMPLETED.....

GRADE REVISED AT S-SIDE PREST AVE. 10-18-39 V.G.
 NEW TYPE-Y-BASINS INSTALLED DEC. 2 - 1939 - M.I.

95000