

OLD MAP 10-26-38  
 REVISION IN QUANTITIES & ASSESSED  
 LENGTH DUE TO ELIMINATION OF  
 PENN. R.R. SIDING FROM CONTRACT.  
 8-14-50 J.A.B.

VE 7-617

C.C. 12-27-50

1"=100'  
 1"=50'

SEE SHEET 1 OF 2

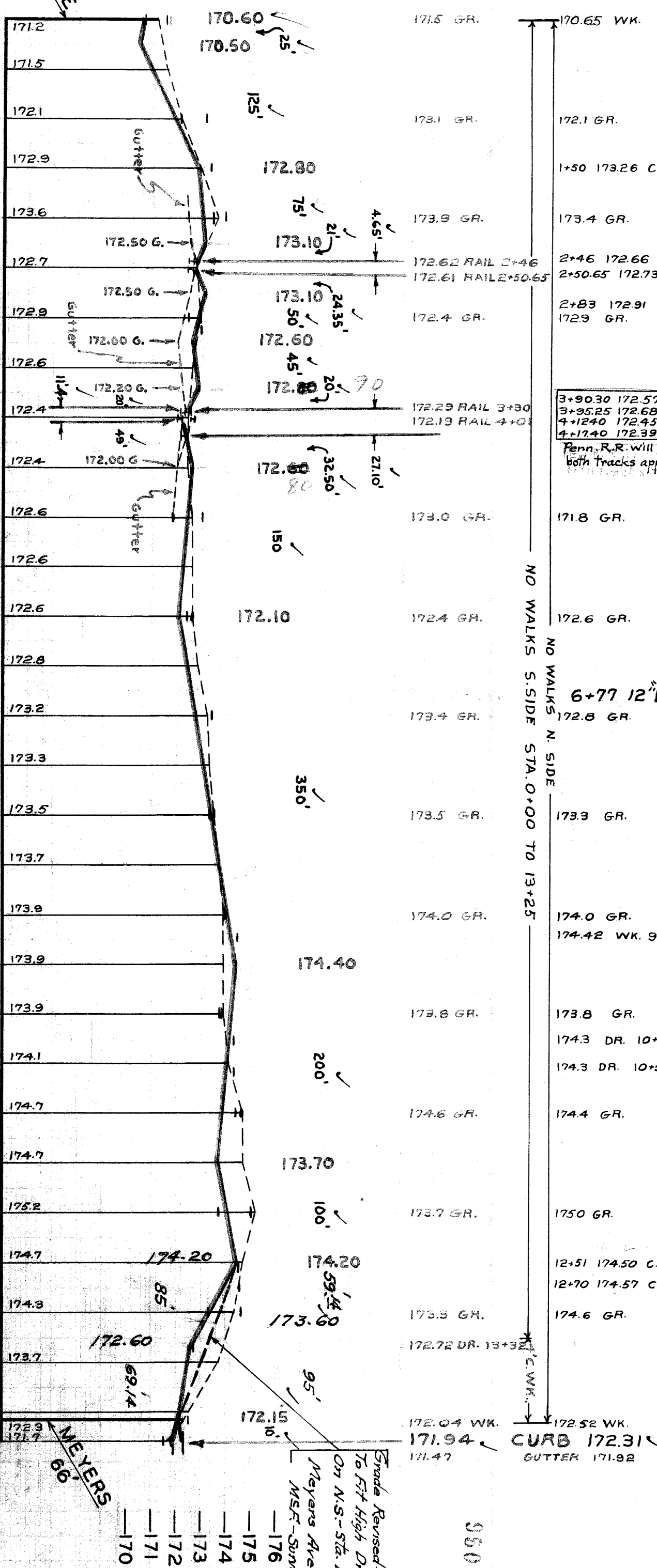
SEE SHEET 1 OF 2

5-F.DAVIS  
 5-16-50  
 5-24-50  
 J.D. J.M. S.F.D. D.B.  
 5-F.F.  
 5-F.DAVIS  
 5-16-50  
 5-24-50  
 J.D. J.M. S.F.D. D.B.  
 5-F.F.

50-19  
 6884

P.W. 1301 F  
 DEPARTMENT OF PUBLIC WORKS  
 STREET PAVING PLAN  
 325A-14  
 1191  
 E.P.L. OF CHEYENNE ✓  
 10' E. OF W.P.L. OF MEYERS ✓  
 10:8:10  
 9'  
 40' ✓

CHEYENNE  
 60



TREES TO BE REMOVED

NO.	STA.	TREES	SIZE	KIND	S.O.F. N.P.L.	NO.	STA.	TREES	SIZE	KIND	S.O.F. N.P.L.
1	0+23	1	6"	ELM	50'	8	4+84	1	8"	ELM	34'
2	0+80	1	12"	TOTALR	30'	9	7+26	7	2"	ASH	33'
3	0+80	1	12"	ASH	30'	10	7+26	3	2"	ASH	33'
4	4+41	1	12"	ELM	30'	11	5+84	2	8"	ASH	31'
5	4+60	2	10"	ELM	29'	12	13+72	20	20"	ELM	31'
6	4+74	5	8"-7-6"	ELM	29'	13	13+99	1	2-6"	ELM	31'
7	4+82	3	12-10"	ELM	28'	28					

NOTE: CONTRACTOR MUST KEEP STREET OPEN TO BOTH VEHICULAR & PEDESTRIAN TRAFFIC DURING CONSTRUCTION.

NOTE: CONTRACTOR SHALL PAVE SPUR TRACKS AS PER CITY OF DETROIT STANDARD. DWG. NO. C-503.

Grade Revised - 10-4-50  
 On N.S. - Sta. 12+50 To Fit High Drives  
 Meyers Ave. Survey  
 M.S.C. - Survey  
 PENN. R.R. TO CONSTRUCT CROSSING EACH TRACK 10.5 FT. WIDE.

NOTE: CONTRACTOR SHALL REMOVE CONCRETE HEADER & BROKEN ASPHALT OR CLASS "C" PAVEMENT BACH OF JUNCTION AS REQUIRED IN FIELD & FILL WITH COLD PATCH TO MEET NEW GRADES. 10 CU. YDS. INCLUDED UNDER EXCAVATION TOTALS FOR COST.

CONSTRUCT 138 SQ. FT. OF STANDARD 4" SIDEWALK.

REMOVE 28 FT. OF EXISTING CURB

ADJUST TOPS OF 2 EXISTING SEWER MANHOLES.

ADJUST TOP OF 1 WATER MANHOLE.

BACKFILL SEWER PIPE TRENCHES UNDER PROPOSED PAVEMENT WITH APPROVED SAND-GRAVEL MATERIAL; ELSEWHERE FILL & TAMP WITH APPROVED EARTH LAYERS AS REQUIRED.

CONTRACTOR SHALL GRUB & REMOVE 24" - 4" TO 12" 1-15", 1-20" & 1-26" TREES AS INDICATED ON PLAN @ UNIT BID COST PER TREE.

CONTRACTOR SHALL FURNISH NEW CASTINGS FOR ALL ADJUSTED CASTINGS & MANHOLES EXCEPT WHEN SAVED CASTINGS ARE AVAILABLE & THEIR USE PERMITTED BY THE ENGINEER. A DEDUCTION OF \$15.00 FOR EACH TOP SO USED SHALL BE MADE FROM THE ORIGINAL CONTRACT PRICE, OTHERWISE TO THE SAVED CASTINGS MUST BE HAULED TO D.R.W. YARDS AT JOHN R. & STATE FAIR STS.

PENN. R.R. TO CONSTRUCT CROSSING EACH TRACK 10.5 FT. WIDE.

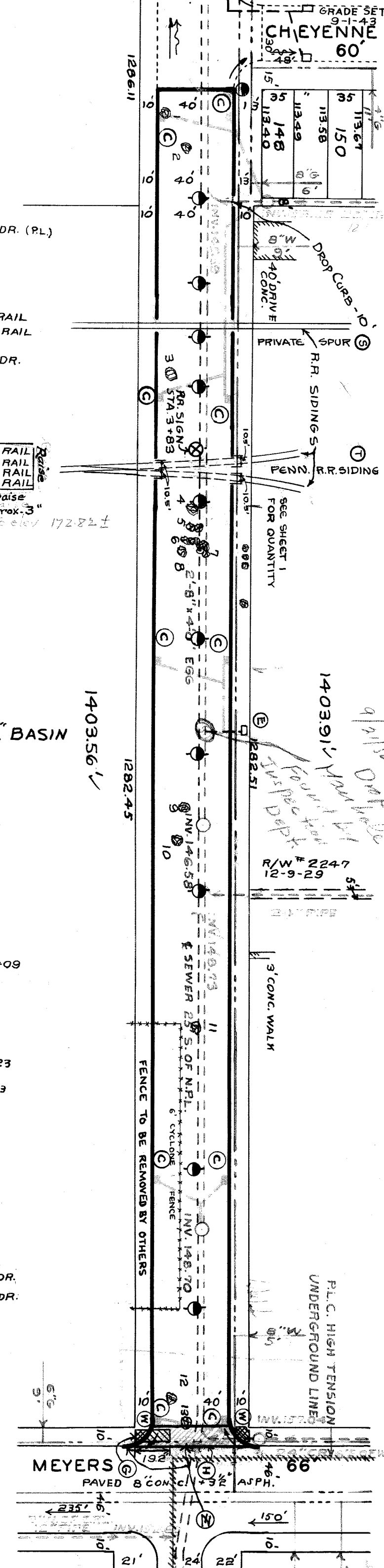
NOTES: (SHEET 2 OF 2)

- AT C CONSTRUCT 10 STD. PIPE CATCH BASINS WITH STD. FRAMES & GRATES AS REQUIRED. CONNECT TO EXISTING OUTLET SEAS SHOWN SEE STD. DRAWING C-326A & C-524.
- AT E ABANDON 1 EXISTING PIPE BASIN. PLUG OUTLETS WITH CLASS "C" CONCRETE & REMOVE OR FILL BASIN WITH CLASS "C" CONCRETE.
- AT H REMOVE 19 FT. OF EXISTING WALK.
- AT W CONTRACTOR SHALL REMOVE CONCRETE HEADER & BROKEN ASPHALT OR CLASS "C" PAVEMENT BACH OF JUNCTION AS REQUIRED IN FIELD & FILL WITH COLD PATCH TO MEET NEW GRADES. 10 CU. YDS. INCLUDED UNDER EXCAVATION TOTALS FOR COST.
- AT Z CONSTRUCT 138 SQ. FT. OF STANDARD 4" SIDEWALK.
- AT W REMOVE 28 FT. OF EXISTING CURB
- AT Z ADJUST TOPS OF 2 EXISTING SEWER MANHOLES.
- AT W ADJUST TOP OF 1 WATER MANHOLE.

LEGEND  
 EDISON POLE

BENCH MARKS:  
 P.L.B.M. # 84-255A NE COR. SNOWDEN & LYNDON  
 P.L.B.M. # 9-251 SE COR. MEYERS & LYNDON  
 ARR. OF HYD. NW. COR. CHEYENNE & LYNDON  
 ARR. OF HYD. N. SIDE LYNDON AT STA. 4+45

ELEVATION  
 169.054 ✓  
 171.674 ✓  
 173.70 ✓  
 175.21 ✓



NOTES: (SHEET 2 OF 2)

- AT C CONSTRUCT 10 STD. PIPE CATCH BASINS WITH STD. FRAMES & GRATES AS REQUIRED. CONNECT TO EXISTING OUTLET SEAS SHOWN SEE STD. DRAWING C-326A & C-524.
- AT E ABANDON 1 EXISTING PIPE BASIN. PLUG OUTLETS WITH CLASS "C" CONCRETE & REMOVE OR FILL BASIN WITH CLASS "C" CONCRETE.
- AT H REMOVE 19 FT. OF EXISTING WALK.
- AT W CONTRACTOR SHALL REMOVE CONCRETE HEADER & BROKEN ASPHALT OR CLASS "C" PAVEMENT BACH OF JUNCTION AS REQUIRED IN FIELD & FILL WITH COLD PATCH TO MEET NEW GRADES. 10 CU. YDS. INCLUDED UNDER EXCAVATION TOTALS FOR COST.
- AT Z CONSTRUCT 138 SQ. FT. OF STANDARD 4" SIDEWALK.
- AT W REMOVE 28 FT. OF EXISTING CURB
- AT Z ADJUST TOPS OF 2 EXISTING SEWER MANHOLES.
- AT W ADJUST TOP OF 1 WATER MANHOLE.

LEGEND  
 EDISON POLE

BENCH MARKS:  
 P.L.B.M. # 84-255A NE COR. SNOWDEN & LYNDON  
 P.L.B.M. # 9-251 SE COR. MEYERS & LYNDON  
 ARR. OF HYD. NW. COR. CHEYENNE & LYNDON  
 ARR. OF HYD. N. SIDE LYNDON AT STA. 4+45

ELEVATION  
 169.054 ✓  
 171.674 ✓  
 173.70 ✓  
 175.21 ✓