

REVISIONS	OK <i>Shipped 10/5/52</i>
QUANTITIES ALTERED	9/1/52
NO CHANGE IN TOTALS	2/1/52
SUPPLEMENTARY DETAILS	
C-327	C-596
C-325	C-524
C-326A	C-585
C-327	C-596
C-324A	C-597
C-325	C-524
C-326A	C-585
C-327	C-596
C-739A	C-739B
C-739A	C-739B
C-1608	C-1608

NOTE:  
BEFORE STARTING CONSTRUCTION CONTRACTOR MUST CHECK WITH UTILITIES FOR LOCATIONS OF EXISTING STRUCTURES WHETHER OR NOT INDICATED ON PLANS

PLAN SCALE DISTORTED  
LOTS & ALLEYS: 1" = 100'  
STREET WIDTHS: 1" = 50'

DRAINAGE COMPLETED 5-29-40  
PAVING COMPLETED C.C. 7-22-52

QUANTITIES	ESTIMATED	FINAL
EXCAVATION CU YDS	9.87	2.50
8" UNIF. SOFT	99	102
PAVING 8" G. B. SO. YDS	1825	307
TREE REMOVAL 12"-18"	1	1
8" CONC. DRIVE SOFT	100	100
SHOULDER WALK 4" SO. FT	66	66
MANHOLES ADJUST	1	1
REPAIRS CONC. ADJUST	4	4
BASES PIPE TYPE	1	1
SEWER 12" LIM. FT	10	10

BOOK 1721	PAGE 44
DATE DRAWN 11-8-51	DATE 9-51
CHECKED G.B. GRADE	561-
CITY 63084	6984
TOTAL 21	126168

DESIGNED BY *Mc Lane*

DRAWN BY *Mc Lane*

CHECKED BY *BEHM*

APPROVED BY *ASST. CITY ENGINEER*

CONTRACT NO. P.W. 1833W

DEPARTMENT OF PUBLIC WORKS DETROIT

CITY ENGINEERS OFFICE DIVISION OF PAVING DESIGN

STREET PAVING PLAN

**LUMPKIN**

NAME OF STREET: N.P.L. OF REMINGTON

FROM: 38' N. OF S.P.L. OF POINTER

TO: 30' W. OF S.P.L. OF POINTER

TYPE OF PAVEMENT: ONE COURSE CONCRETE - INTEGRAL CURB

WIDTH: 30'

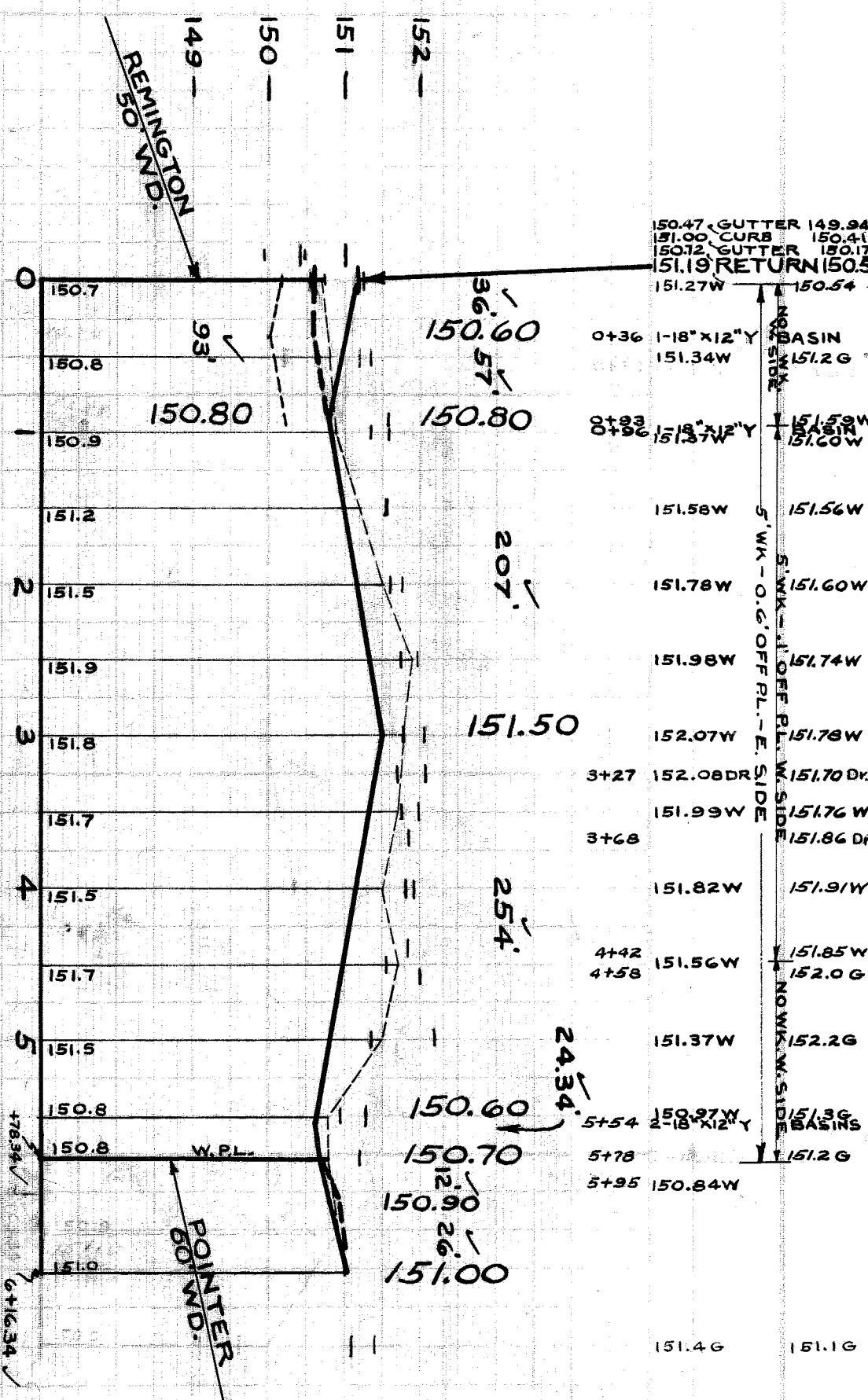
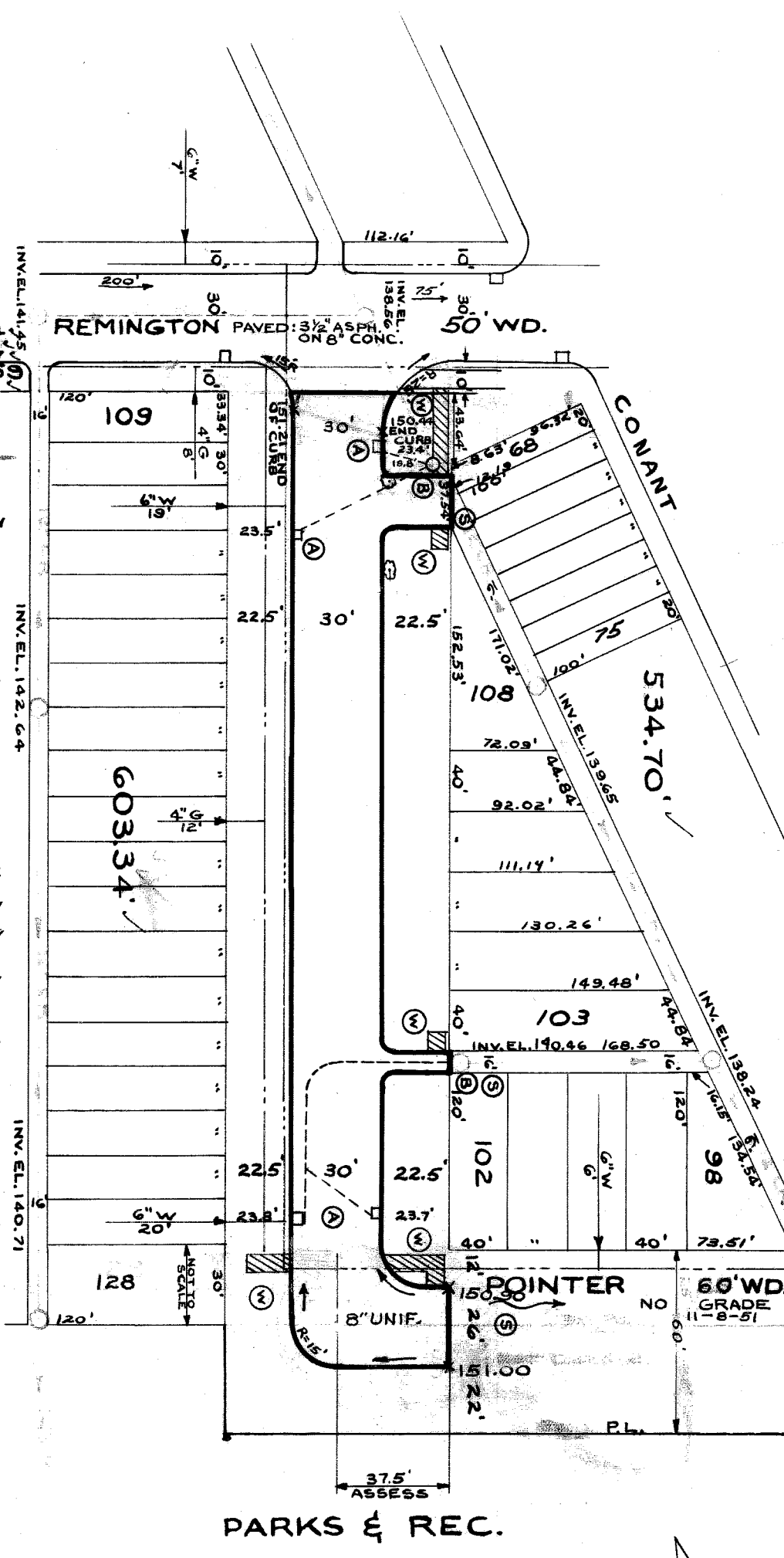
INDEX TO PLAN NO. 52-2

RECORD NO. 18 91

ASBICK NO. 325BA-12

PETITION NO. 7855

SHEET 1 OF 1 SHEETS



TREE REMOVAL SCHEDULE

SIZE	TYPE	DISTORL	STA.
10"	ELM	21.3	0+56
14"	ELM	20.3	1+20

- 152
- 151
- 150
- 149

**BENCH MARKS**

P.L.B.M. # 91-251A N.E. CORNER LUMPKIN & OUTER DR.  
B.M. ARROW ON HYDRANT S.E. CORNER LUMPKIN & POINTER  
P.L.B.M. # 91-252A S.E. CORNER LUMPKIN & 8-MILE

NOTE: + In Walk 5' Off P.L.

Note: For Symbols (A) etc. See Std Det. Drwg. # C-327.

91995