

| | | |
|-------------------------|--------|------------------------|
| SEWER | 7-9-47 | SECTION & NOTES, LAWT. |
| REVISIONS | | |
| SUPPLEMENTARY DRAWINGS: | | |
| C-324-A | C-390 | C-733 |
| C-325 | C-824 | C-739 |
| C-326-A | C-585 | C-739 A |
| C-327 | C-586 | C-739 B |

NOTE:
BEFORE STARTING CONSTRUCTION CONTRACTOR MUST CHECK WITH UTILITIES FOR LOCATIONS OF EXISTING STRUCTURES WHETHER OR NOT INDICATED ON PLANS.

PLAN SCALE DISTORTED
LOTS & ALLEYS 1" = 100'
STREET WIDTHS 1" = 50'

BY D. P.W. 12-19-46
PAVING COMPLETED C.C. 1-20-48

| QUANTITIES | ESTIMATED | FINAL |
|--------------------------|-----------|-------|
| EXCAVATION CU. YDS. | 541 | 29 |
| NEW CURB LIN. FT. | 41 | 44 |
| PAVING SQ. YDS. | 989 | 929 |
| SIDEWALK SQ. FT. | 240 | 240 |
| MANHOLES ADJUST | | 1 |
| BASINS ADJUST | | 4 |
| SEWERS 12" LIN. FT. | | 2 |
| SEWERS 18" LIN. FT. | | 2 |
| PAVING 8" CONC. 24" DIA. | | 2 |

| | | | | | |
|------------------|----------------|-----------------|----------|--------|----|
| NON. SCALE | 1" = 20' | BOOK | 1569 | PAGE | 48 |
| VER. SCALE | 1" = 2' | DATE | 10-10-45 | | |
| PLAN | J.C.O. PROFILE | J.C.O. COMPUTED | 5.5. | | |
| CHECKED | 9.5. | GRADE | CHECKED | | |
| LOTS | 2L | 659.20 | LENGTH | 329.60 | |
| CITY | 2L | 19.00 | LENGTH | 9.50 | |
| TOTAL | 2L | 678.20 | LENGTH | 339.10 | |
| COST ADVERTISING | | 132.60 | | 3.70 | |
| COST INSPECTION | | 346.60 | | 46.79 | |

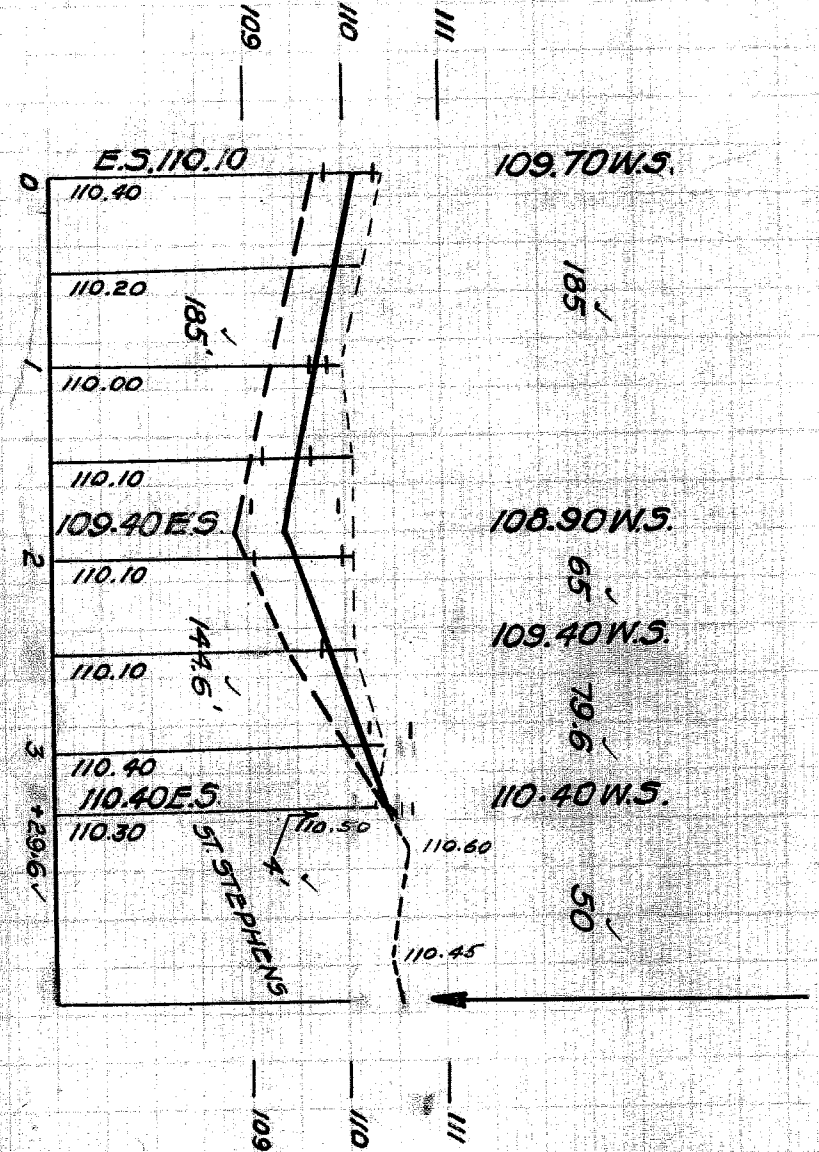
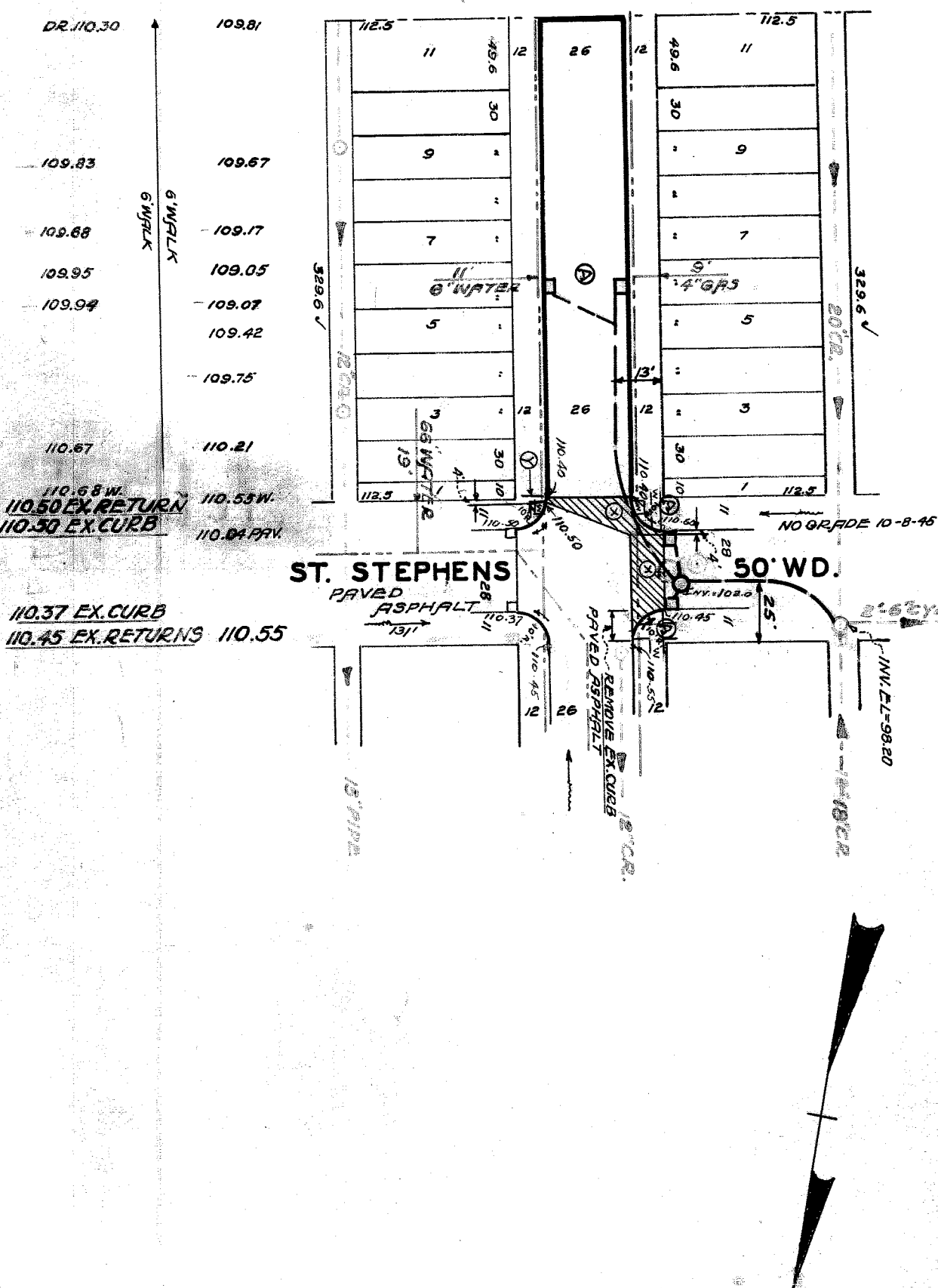
DESIGNED BY: J.C. OBER
DRAWN BY: J.C. OBER
CHECKED BY: R.R. ROOM
APPROVED BY: M. R. FRADE
ENGINEER OF STREETS
ASSIST. CITY ENGINEER

CONTRACT NO. PW-318
DEPARTMENT OF PUBLIC WORKS
CITY ENGINEERS OFFICE - DIVISION OF PAVING DESIGN
STREET PAVING PLAN
LUMLEY
283-11

CARD NO. 54
INDEX TOPO. NO. 4

RECORD NO. 95 N. OF S.P.L. OF ST. STEPHENS

NAME OF STREET: 3296 SO. OF S.P.L. OF ST. STEPHENS
TYPE OF PAVEMENT: 8" ONE COURSE CONCRETE SLAB AND CURB INTERGRATE
WIDTH: 20'



| BENCH MARKS | ELEV |
|--|---------|
| ARROW ON HYDRANT - S.E. COR. LUMLEY AND ST. STEPHENS | 113.01 |
| # 4.253 MON. AT ST. STEPHENS AND CENTRAL | 111.972 |

NOTES:
 AT 1 PAVE CROSS SECTIONED AREA WITH 8" ONE COURSE CONCRETE BRSE AND 3/4" ASPHALT TOP. SET CURBS FOR RETURNS (S9 SHOWN WITH 10" RADIUS CIRCLES).
 AT 2 EXTEND EX. CURB CIRCLE 4' TO MEET NEW CURB.
 AT 3 ADJUST TOPS OF 4' EXISTING 18" X 18" BASINS. CONTRACTOR SHALL FURNISH AND INSTALL STD. FLAT TYPE CATCH BASIN FRAMES & GRATINGS FOR 2 EXIST. BASINS ON LUMLEY.
 AT 4 CONTRACTOR SHALL HAUL OLD CASTINGS TO D.P.W. YARD AT STATE FAIR & JOHN R. CONTRACT 240 SQ. FT. OF STD. 4" CONCRETE WALKS.
 AT 5 ALL CURBS WITHIN STREET INTERSECTION TO BE SEPARATE - TYPE II OR INTEGRAL - TYPE III. EXCAVATION TOTALS INCLUDE GRADING TO REQUIRED SECTION, FROM FREE ENDS OF ALL NEW PAVING, A DISTANCE OF AT LEAST 10 FEET.

94920

REVISION NO. 4884 OF J.E. JENKINS ET AL. MAY 1, 1945.
FORCED PAVING C.C. RESOLUTION 5-27-47.