

STREET PAVING PLAN
 LONGACRE

390.85' N. OF N.P.L. ORANGELAWN
 34' N. OF S.P.L. OF PLYMOUTH
 STREET INTERSECTION
 8:6:8 ONE COURSE CONC. CURB
 TYPE OF PAVEMENT: G.S. W. PARVIN 4/8/47
 PET # 4812
 C.C.R. 6/8/47

DESIGNED BY: L.G. VANTUYL
 DRAWN BY: G. J. HOFFER
 CHECKED BY: S. J. R. ROBERTS
 APPROVED BY: *[Signature]*
 ENGINEER OF STREETS
 M. R. PROCTOR
 CITY ENGINEER

RECORD NO. 69/100
 FROM 390.85' N. OF N.P.L. ORANGELAWN
 TO 34' N. OF S.P.L. OF PLYMOUTH
 SHEET 1 OF 1 SHEETS

DATE: 8-25-48
 PLAN: 4:5
 PROFILE: 4:5
 CHECKED: 4:1
 TOTAL AREA: 2,584,241
 TOTAL LENGTH: 1,292.12

DESIGNED BY: L.G. VANTUYL
 DRAWN BY: G. J. HOFFER
 CHECKED BY: S. J. R. ROBERTS
 APPROVED BY: *[Signature]*
 ENGINEER OF STREETS
 M. R. PROCTOR
 CITY ENGINEER

DESIGNED BY: L.G. VANTUYL
 DRAWN BY: G. J. HOFFER
 CHECKED BY: S. J. R. ROBERTS
 APPROVED BY: *[Signature]*
 ENGINEER OF STREETS
 M. R. PROCTOR
 CITY ENGINEER

DESIGNED BY: L.G. VANTUYL
 DRAWN BY: G. J. HOFFER
 CHECKED BY: S. J. R. ROBERTS
 APPROVED BY: *[Signature]*
 ENGINEER OF STREETS
 M. R. PROCTOR
 CITY ENGINEER

DESIGNED BY: L.G. VANTUYL
 DRAWN BY: G. J. HOFFER
 CHECKED BY: S. J. R. ROBERTS
 APPROVED BY: *[Signature]*
 ENGINEER OF STREETS
 M. R. PROCTOR
 CITY ENGINEER

DESIGNED BY: L.G. VANTUYL
 DRAWN BY: G. J. HOFFER
 CHECKED BY: S. J. R. ROBERTS
 APPROVED BY: *[Signature]*
 ENGINEER OF STREETS
 M. R. PROCTOR
 CITY ENGINEER

DESIGNED BY: L.G. VANTUYL
 DRAWN BY: G. J. HOFFER
 CHECKED BY: S. J. R. ROBERTS
 APPROVED BY: *[Signature]*
 ENGINEER OF STREETS
 M. R. PROCTOR
 CITY ENGINEER

DESIGNED BY: L.G. VANTUYL
 DRAWN BY: G. J. HOFFER
 CHECKED BY: S. J. R. ROBERTS
 APPROVED BY: *[Signature]*
 ENGINEER OF STREETS
 M. R. PROCTOR
 CITY ENGINEER

DESIGNED BY: L.G. VANTUYL
 DRAWN BY: G. J. HOFFER
 CHECKED BY: S. J. R. ROBERTS
 APPROVED BY: *[Signature]*
 ENGINEER OF STREETS
 M. R. PROCTOR
 CITY ENGINEER

DESIGNED BY: L.G. VANTUYL
 DRAWN BY: G. J. HOFFER
 CHECKED BY: S. J. R. ROBERTS
 APPROVED BY: *[Signature]*
 ENGINEER OF STREETS
 M. R. PROCTOR
 CITY ENGINEER

DESIGNED BY: L.G. VANTUYL
 DRAWN BY: G. J. HOFFER
 CHECKED BY: S. J. R. ROBERTS
 APPROVED BY: *[Signature]*
 ENGINEER OF STREETS
 M. R. PROCTOR
 CITY ENGINEER

DESIGNED BY: L.G. VANTUYL
 DRAWN BY: G. J. HOFFER
 CHECKED BY: S. J. R. ROBERTS
 APPROVED BY: *[Signature]*
 ENGINEER OF STREETS
 M. R. PROCTOR
 CITY ENGINEER

DESIGNED BY: L.G. VANTUYL
 DRAWN BY: G. J. HOFFER
 CHECKED BY: S. J. R. ROBERTS
 APPROVED BY: *[Signature]*
 ENGINEER OF STREETS
 M. R. PROCTOR
 CITY ENGINEER

DESIGNED BY: L.G. VANTUYL
 DRAWN BY: G. J. HOFFER
 CHECKED BY: S. J. R. ROBERTS
 APPROVED BY: *[Signature]*
 ENGINEER OF STREETS
 M. R. PROCTOR
 CITY ENGINEER

DESIGNED BY: L.G. VANTUYL
 DRAWN BY: G. J. HOFFER
 CHECKED BY: S. J. R. ROBERTS
 APPROVED BY: *[Signature]*
 ENGINEER OF STREETS
 M. R. PROCTOR
 CITY ENGINEER

DESIGNED BY: L.G. VANTUYL
 DRAWN BY: G. J. HOFFER
 CHECKED BY: S. J. R. ROBERTS
 APPROVED BY: *[Signature]*
 ENGINEER OF STREETS
 M. R. PROCTOR
 CITY ENGINEER

DESIGNED BY: L.G. VANTUYL
 DRAWN BY: G. J. HOFFER
 CHECKED BY: S. J. R. ROBERTS
 APPROVED BY: *[Signature]*
 ENGINEER OF STREETS
 M. R. PROCTOR
 CITY ENGINEER

DESIGNED BY: L.G. VANTUYL
 DRAWN BY: G. J. HOFFER
 CHECKED BY: S. J. R. ROBERTS
 APPROVED BY: *[Signature]*
 ENGINEER OF STREETS
 M. R. PROCTOR
 CITY ENGINEER

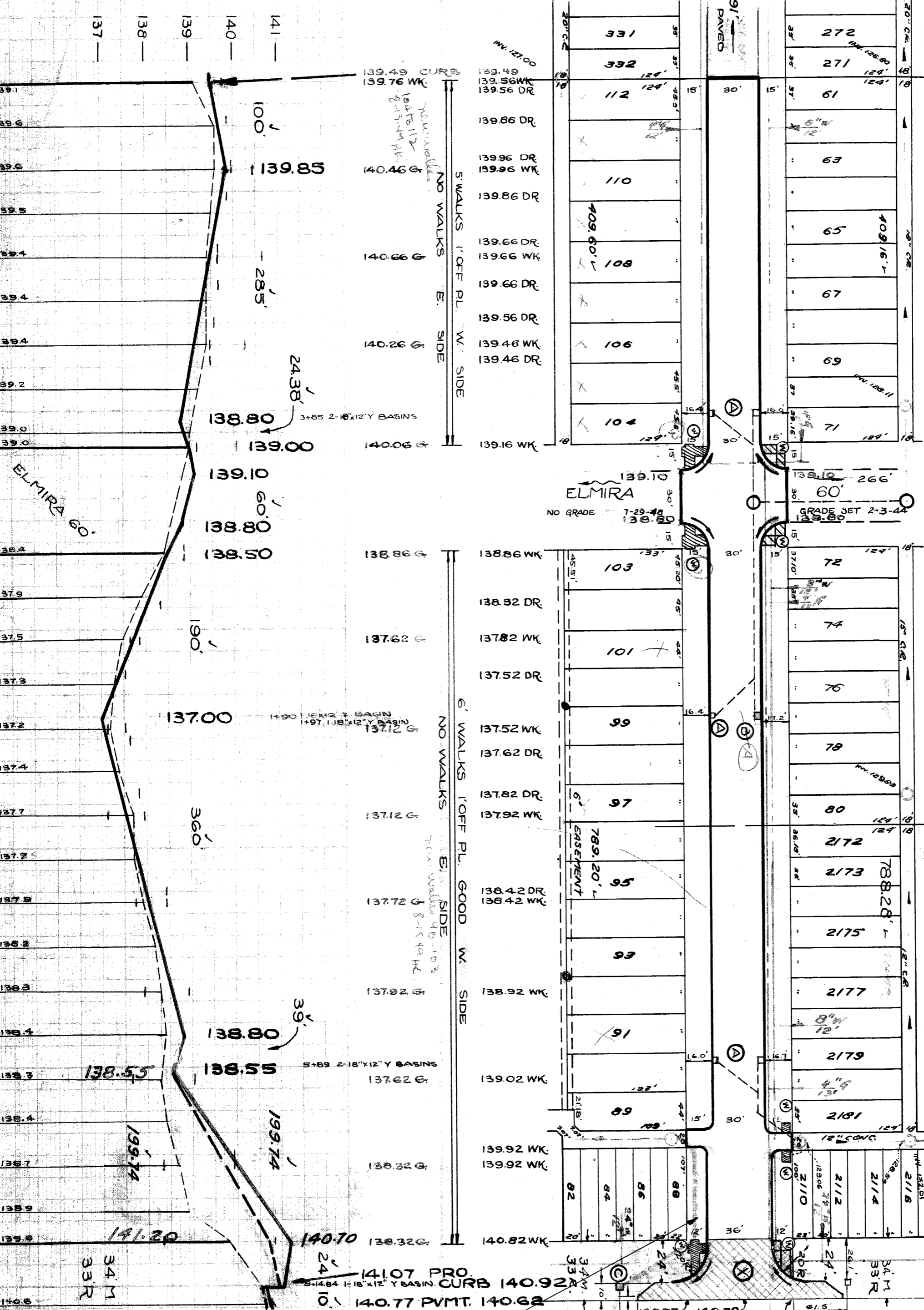
DESIGNED BY: L.G. VANTUYL
 DRAWN BY: G. J. HOFFER
 CHECKED BY: S. J. R. ROBERTS
 APPROVED BY: *[Signature]*
 ENGINEER OF STREETS
 M. R. PROCTOR
 CITY ENGINEER

REWER	9-20-49 CONSTRUCT OUTLET
REVISIONS	FOR C.S. IN PLYMOUTH TO ALLEY
SEWER S. OF PLYMOUTH.	
NOTE:	BEFORE STARTING CONSTRUCTION CONTRACTOR MUST CHECK WITH UTILITIES FOR LOCATIONS OF EXISTING STRUCTURES WHETHER OR NOT INDICATED ON PLANS
PLAN SCALE DISTORTED	
LOTS & ALLEYS 1"=100'	
STREET WIDTHS 1"=50'	
DRAINAGE COMPLETED 4-5-46	
PAVING COMPLETED C.C. 10-11-49	

QUANTITIES	ESTIMATED	FINAL
EXCAVATION CU YDS	1 178	253
NEW CURB LIN FT	4 127	71
PAVING 8:6:8 SQ. YDS		138
SIDEWALK SQ FT		864
MANHOLES RECONSTRUCT		1
ADJUST CONSTRUCT		5
SEWER 12" LIN. FT.		1860
CONC. DRIVE SHAFT		100
UNIFORM ASPH.		327

HOR. SCALE 1"=100'	NO. 1693	PAGE 9
VER. SCALE 1"=2'	DATE 8-25-48	
PLAN	4:5	PROFILE 4:5
CHECKED	4:1	COMPLETED 4:5
TOTAL AREA	2,584,241	TOTAL LENGTH 1,292.12

DESIGNED BY: L.G. VANTUYL
 DRAWN BY: G. J. HOFFER
 CHECKED BY: S. J. R. ROBERTS
 APPROVED BY: *[Signature]*
 ENGINEER OF STREETS
 M. R. PROCTOR
 CITY ENGINEER



NOTES:
 (A) ADJUST TOPS OF 5 EXISTING 18"x12" BASINS WITH FLAT TYPE GRATES & FRAMES.
 (B) RECONSTRUCT EXISTING 18"x12" BASIN AT CURB LOCATION EXISTING OUTLETS AS SHOWN.
 (C) CONSTRUCT 1 STD. 18"x12" DOME TYPE BASIN AND CONNECT TO EXISTING OUTLETS AS SHOWN.
 (D) CONSTRUCT 664 SQ. FT. OF STANDARD 4" SIDEWALK.
 (E) CONSTRUCT 36' FT. RETURNS WITH TYPE II CURBS 20 FT. RAD. & 10 FT. WIDENING STRIP. SLAB TO BE 8" CONC. & 2" ASPH. SEE DRAWING C-789.
 (F) ALL CURBS WITHIN STREET INTERSECTIONS TO BE SEPARATE TYPE II OR INTEGRAL TYPE III EXCEPT AS OTHERWISE SHOWN.
 (G) DIRT ALLEYS & DIRT ROADWAYS AT END OF PAVEMENT SHALL BE GRADED BACK & STONED 6" DEEP UNIFORMLY FOR A DISTANCE OF 10 FT. TO MEET EXISTING GRADES FOR COST INCLUDED UNDER EXCAVATION TOTALS FOR COST CONTRACTOR SHALL FURNISH ALL NECESSARY MATERIALS INCLUDING CASTINGS AND SHALL HAVE ALL SALVAGEABLE MATERIALS AND SHALL HAVE ALL FAIR & JOHN R.
 (H) ADJUST TOPS OF 4 WATER MANHOLES.
 (I) BACKFILL SEWER PIPE TRENCHES UNDER PROPOSED & EXISTING PAVEMENT WITH APPROVED SAND-GRAVEL MATERIAL. OTHERWISE FILL & TAMP WITH APPROVED EARTH LAYERS AS REQUIRED.
 (J) ADJUST TOP OF 2 SEWER MANHOLE.
 (K) RECONSTRUCT GONE OF 1 SEWER MANHOLE.

9-20-49 - Engineer's approval
 Add 1st of 12" sewer
 completed 9-2-49
 94978