

W-Part
6/13/14

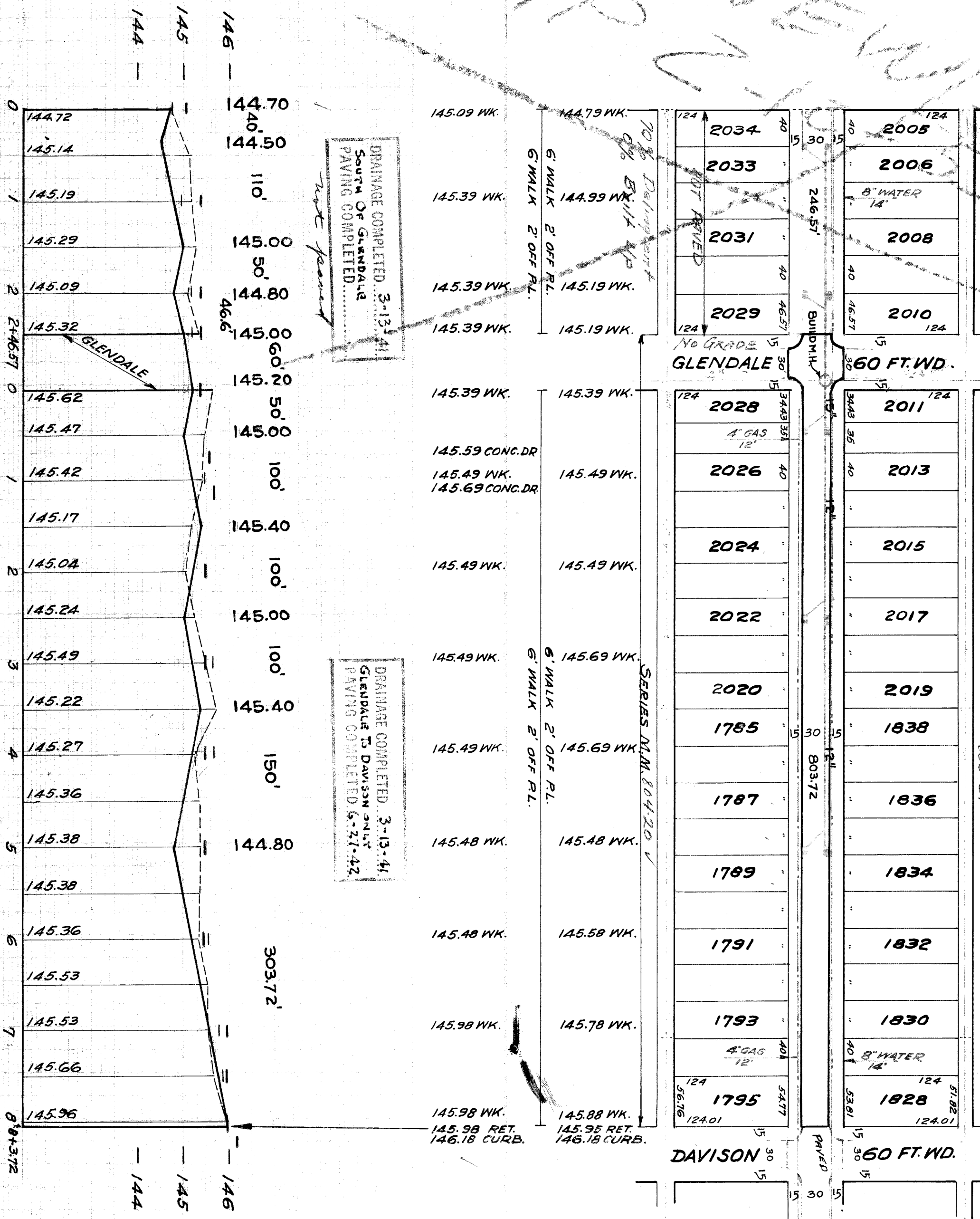
SEWER INDEXED	JOB NO.	PROGRESS	QUANTITIES	LOTS	CITY	LOTS	CITY	HOR. SCALE 1" = 100'	BOOK/324 PAGE 74	DESIGNED BY
REVISIONS	BLUE PRINT ISSUED FOR:	DATE	EXCAVATION					VER. SCALE 1" = 2'	DATE/JAN. 7, 1941.	DRAWN BY
	GRADE ONLY		STRAIGHT CURB NEW					CHECKED		TRACED BY
	CATCH BASINS		OLD CURB RESET					PROG. TO GRADE		CHECKED BY
	PAVING-CLASS.		CIRCULAR CURB					COMPUTED		APPROVED
			CONCRETE BASE					CITY		ENGINEER OF STREETS
										ASSIST. CITY ENGINEER

DEPARTMENT OF PUBLIC WORKS DETROIT
CITY ENGINEER'S OFFICE - DIVISION OF PAVING DESIGN
STREET PAVING PLAN

NAME OF LONGACRE AVE. 60 FT. WD.
PROJECT 2465' S-GLLENDALE AVE.
TO S23 DAVISON AVE.
TYPE OF PAVEMENT 6" ONE CO. CONC. WIDTH 30'

CARD NO. 537
RECORD NO. 67 101
INDEX TO PG. NO. 537

NUMBER OF SHEETS 1
SHEET NO. 1



JOB-NO-D-1121

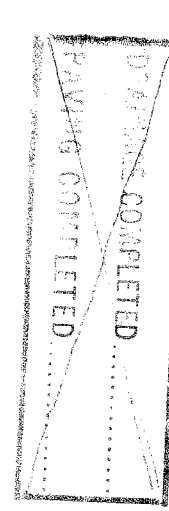
94985

BENCH MARKS

101.207 RAILROAD SPIKE IN THE W. SIDE OF A 36" ELM TREE ON THE E. SIDE OF SOUTHERFIELD. 30 FT. S. OF FULLERTON. 145.363
ARROW ON HYD. N.W. COR. GLENDALE & LONGACRE. 148.403
ARROW ON HYD. N.W. COR. LONGACRE & DAVISON. 149.423
RAILROAD SPIKE IN THE N. SIDE OF A 20" EVERGREEN TREE ON THE S.E. COR. OF RUTLAND & SCHOOLCRAFT. 148.311

Drainage Comp'd 3/13/41

325 BM-24



N

Pat. - to pave from 2465' S of Glendale to the corner