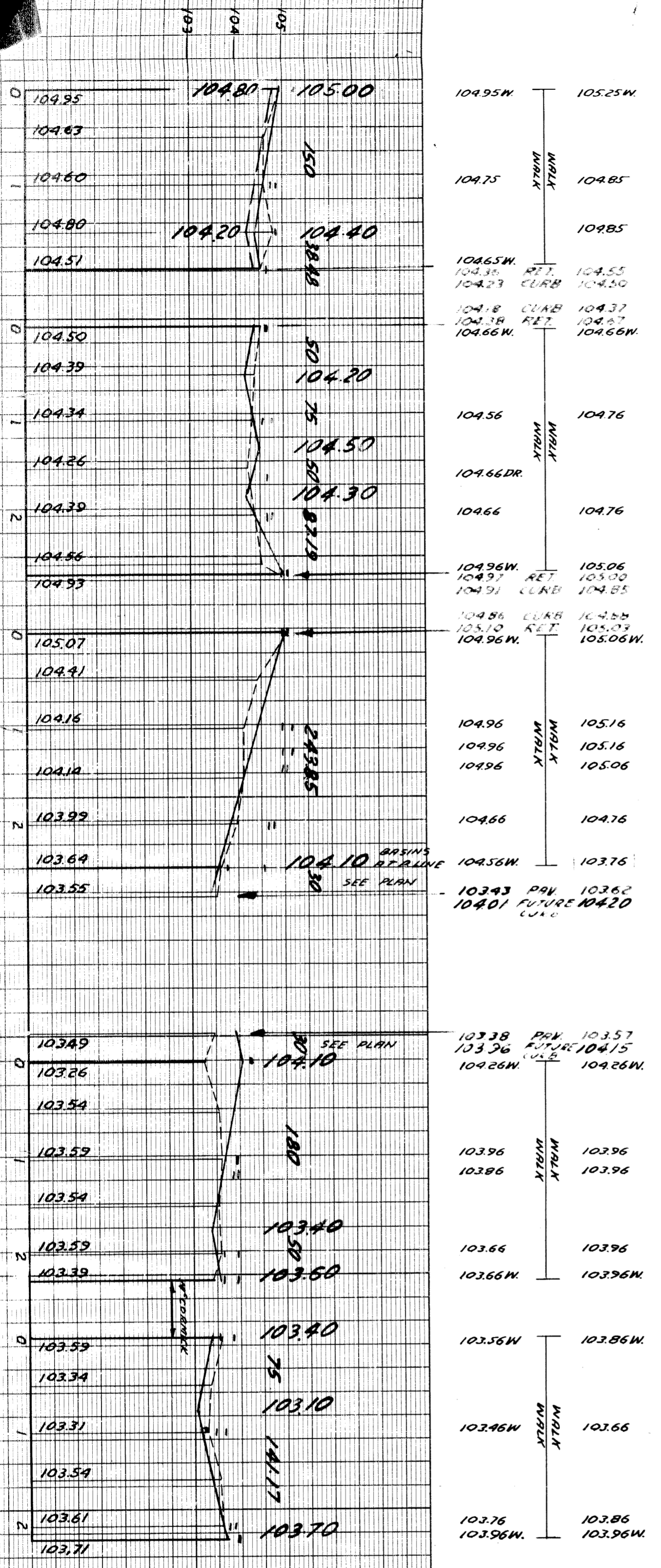
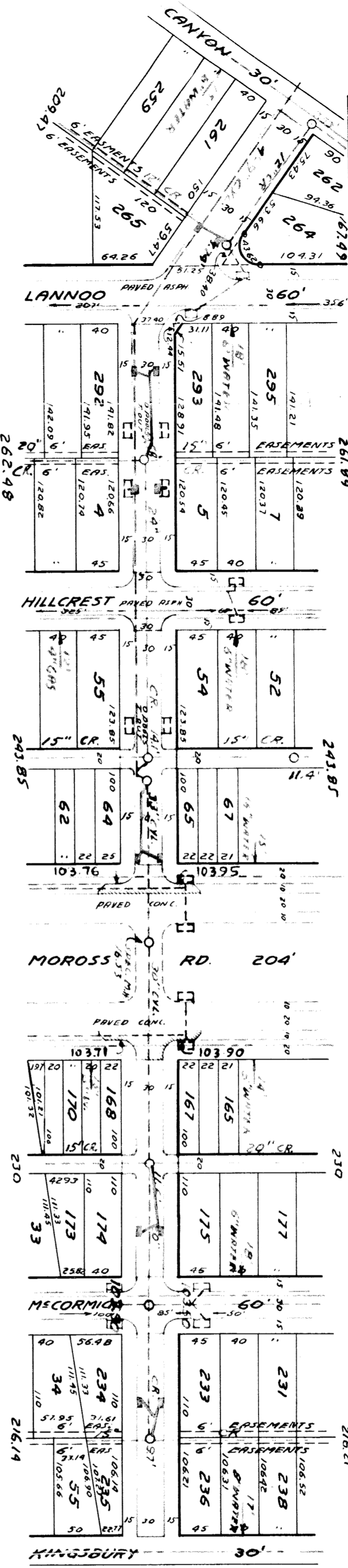


SEWER INDEXED  
*A. J. Leopold*

JOB NO. 104.20		PROGRESS
BLU. PRINT ISSUED FOR	DATE	START FINISH
QUANTITIES	EXCAVATION	STRAIGHT CURB NEW
LOTS	OLD CURB RESET	CIRCULAR CURB
CITY	PAVING	CONCRETE BASE
LOTS	CITY	
VER. SCALE 1"=2'	DATE 6-5-40	NO. 1075 PAGE 46
PLAN	R.H.	PROFILE
CHECKED	GRADE	R.H.
COMPUTED	CITY	LENGTH
APPROVED	LENGTH	LENGTH
DESIGNED BY <i>C. Williams</i>	DRAWN BY <i>A. Adams</i>	TRACED BY <i>A. Adams</i>
CHECKED BY <i>C. Williams</i>	APPROVED	ENGINEER OF STREETS

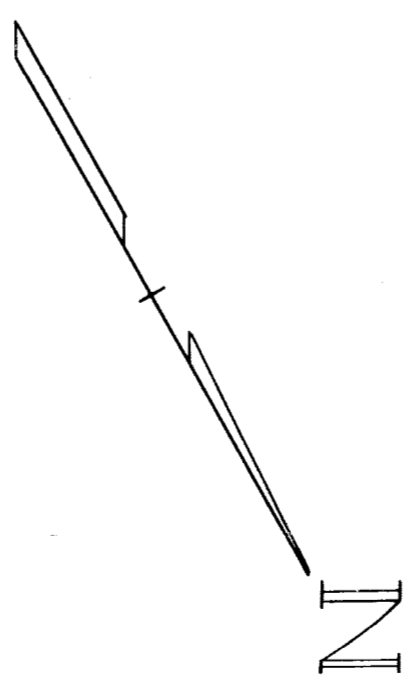


DEPARTMENT OF PUBLIC WORKS  
 CITY ENGINEER'S OFFICE - DIVISION OF PAVING DESIGN  
**STREET PAVING PLAN**

NAME OF STREET: LINVILLE 60'  
 FROM: CANYON  
 TO: KINGSBURY

RECORD NO. 39 107  
 SHEET NO. 1

EXISTING POOLS & BASINS  
 NEW  
 BENCH MARKS  
 SPK IN E.S. 18" OAK TREE, 75' E OF W. PL. MOROSS RD. 10' S OF LINVILLE - 105.5  
 SPK IN POLE, S.W. COR. LINVILLE & MOROSS RD. 105.5  
 MONUMENT IN N.H. NE. COR. LINVILLE & LANNOO 104.2



D-4031