

DEPARTMENT OF PUBLIC WORKS
CITY ENGINEERS OFFICE - DIVISION OF PAVING DESIGN

STREET PAVING PLAN

LIEBOLD 60'

SANDERS

GILROY

CLASS 'B' 8" MACADAM - 2 1/2" OIL AGG. WITH FORCE PAVING C.C. 8-9-39

SUMP MANHOLE BASINS BY W.P.A. 5-18-37

EST. 9/16/1939

RECORDED 7-22-37

NUMBER OF SHEETS	2
SHEET NO.	1

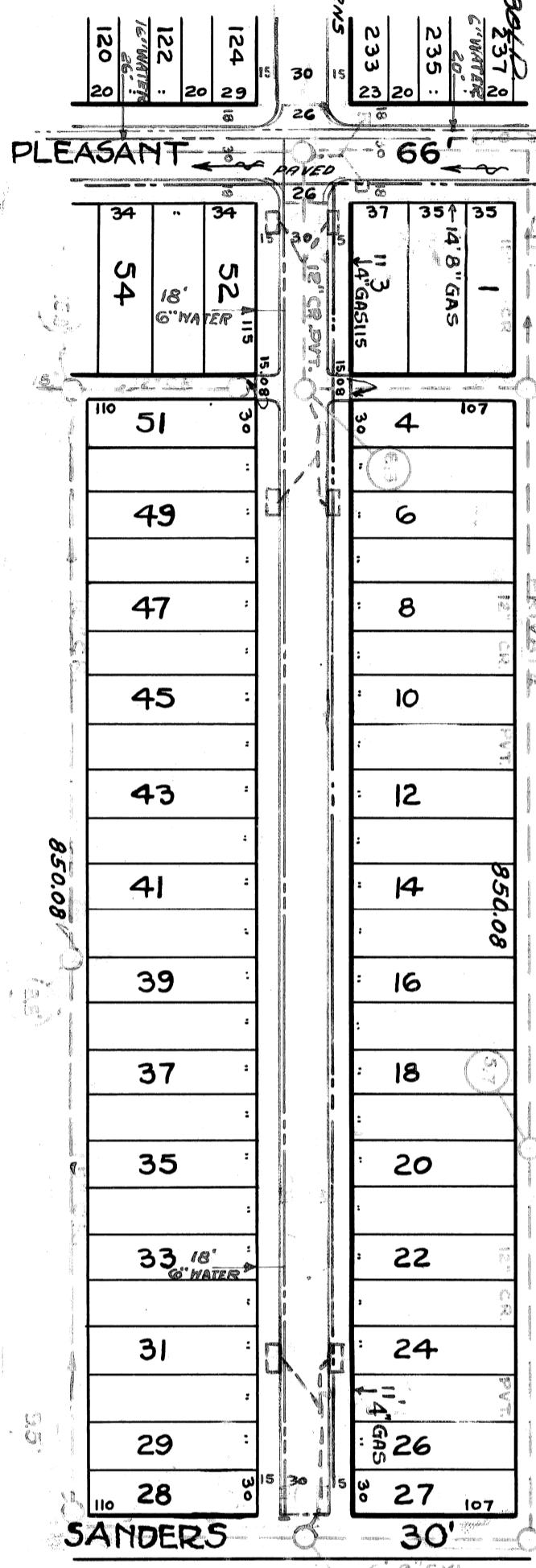
INDEX TOPO. NO. 52 72

CARD NO.
 NAME OF STREET
 FROM
 TO
 RECORD NO.
 DATE 11-23-36

VER. SCALE 1" = 2'	BOOK 1271 PAGE 25
PLAN C.L.W. PROFILE	C.L.W. COMPUTED
CHECKED BY <i>10-30-40-41</i>	GRADE R.R. CHECKED
LOTS 2L 4420	LENGTH 210
CITY 2L 3621	LENGTH 151.08
TOTAL 2L 4721	LENGTH 2361.09
CITY	LENGTH

QUANTITIES	LOTS	CITY	LOTS	CITY
EXCAVATION				
STRAIGHT CURB NEW				
OLD CURB RESET				
CIRCULAR CURB				
PAVING				
CONCRETE BASE				

CIRCLES	QUANTITIES	LOTS	CITY	LOTS	CITY
AT NO.					
RADIUS					
TANG.					
ARC					
SEC.					



BENCH MARKS

ARO. ON HYD. S.W. COR. LIEBOLD & SANDERS	ELEV. 102.69
ARO. ON HYD. S.E. COR. LIEBOLD & PLEASANT	100.53

EXISTING POOLS & BASINS

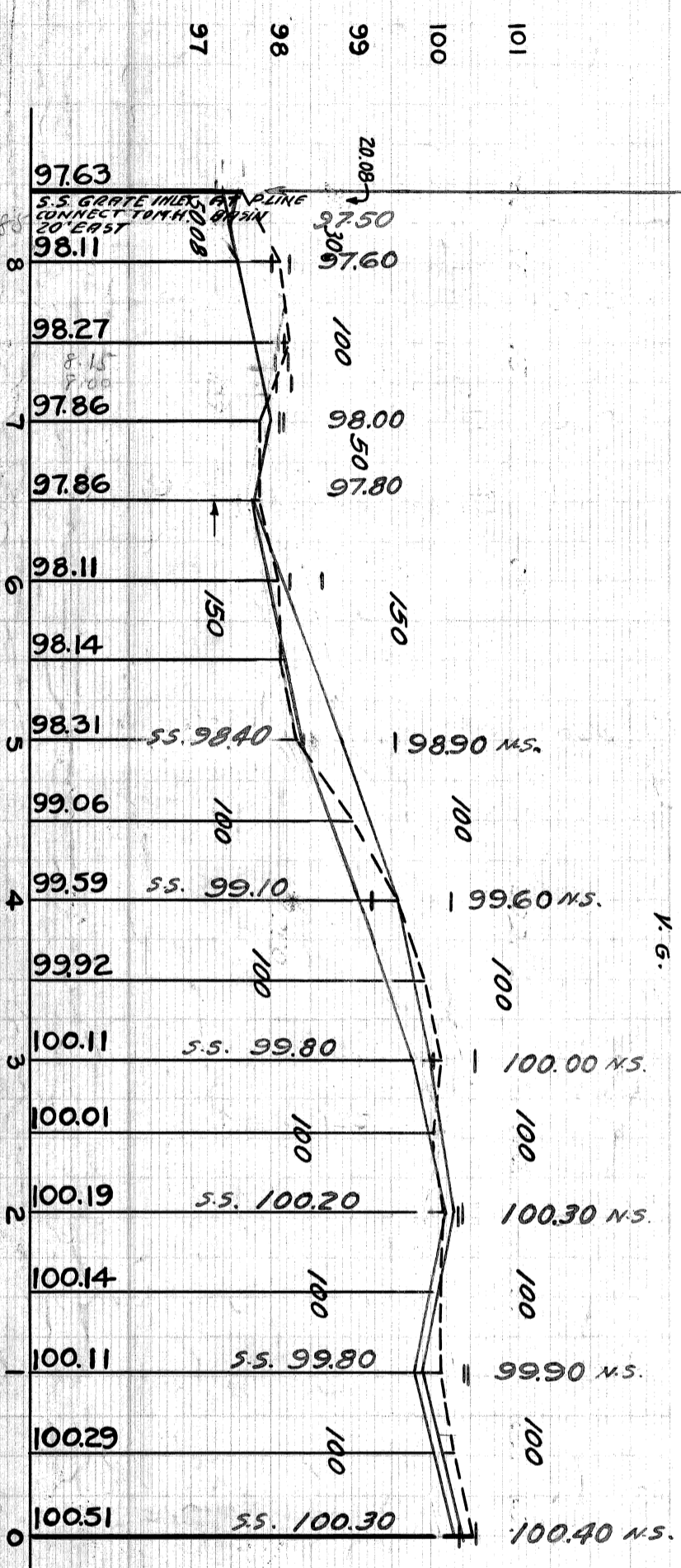
LOTS	1670	1 1/2	835
CITY	3016	1 1/2	1508
TOTAL	1700	1 1/2	850.08

DESIGNED BY	<i>Spindler</i>	APPROVED	<i>M. R. Blaine</i> ENGINEER OF STREETS
DRAWN BY			
TRACED BY			<i>Walter R. ...</i> ASST. CIV. ENGINEER
CHECKED BY	<i>Spindler</i>		

DRAINAGE COMPLETED
PAVING COMPLETED 9/26/39

94031

GRADE REVISED 4-2-37



- 97.50 R. 92.50 CURB 97.50 R.
- 97.40 RET. 97.64
- 97.49 WK 98.34
- 98.01 WK 98.25
- 98.18 DR. 98.09 DR.
- 98.20 DR. 98.07 DR.
- 98.29 ALLEY 98.08
- 98.18 WK 98.17
- 98.25 WK 98.65
- 98.42 WK 99.55
- 99.25 WK 100.29
- 100.01 WK 100.54
- 100.39 WK 100.37
- 100.42 WK 100.44
- 100.36 WK 100.54

12-15-39 WATER MAIN
TO BE LOWERED
9-25-39 WATER MAIN LOWERED

DO NOT CONNECT BASINS
TO ALLEY NOT LIEBOLD

RE-SET 4 CIRCLES FOR RETURNS

