

SEWER INDEXED 16-18-39	JOB NO. C-2200	PROGRESS	QUANTITIES	LOTS	CITY	LOTS	CITY
REVISIONS:	BLUE PRINT ISSUED FOR: GRADE ONLY	DATE	EXCAVATION				
	CATCH BASINS	START	STRAIGHT CURB NEW				
	PAVING-CLASS:	FINISH	OLD CURB RESET				
	DEPT. OF WATER SUPPLY		CIRCULAR CURB				
	GAS CO.		PAVING				
			CONCRETE BASE				

HOR. SCALE 1"=100'	BOOK 1451 PAGE 13
VER. SCALE 1"=2'	DATE 10-18-39
PLAN CHECKED EM	PROFILE CHECKED EM
CITY ZL 1/270	LENGTH 1/6
TOTAL ZL 1/270	CHECKED 9/16
	CITY 635

DESIGNED BY <i>W. L. ...</i>	ENGINEER OF STREETS
DRAWN BY <i>Edw. ...</i>	ASST. CITY ENGINEER
TRACED BY	
CHECKED BY <i>L. ...</i>	
APPROVED	

DEPARTMENT OF PUBLIC WORKS DETROIT
 CITY ENGINEER'S OFFICE - DIVISION OF PAVING DESIGN
STREET PAVING PLAN
 LIDDESDALE 60'
 GILROY
 TORONTO

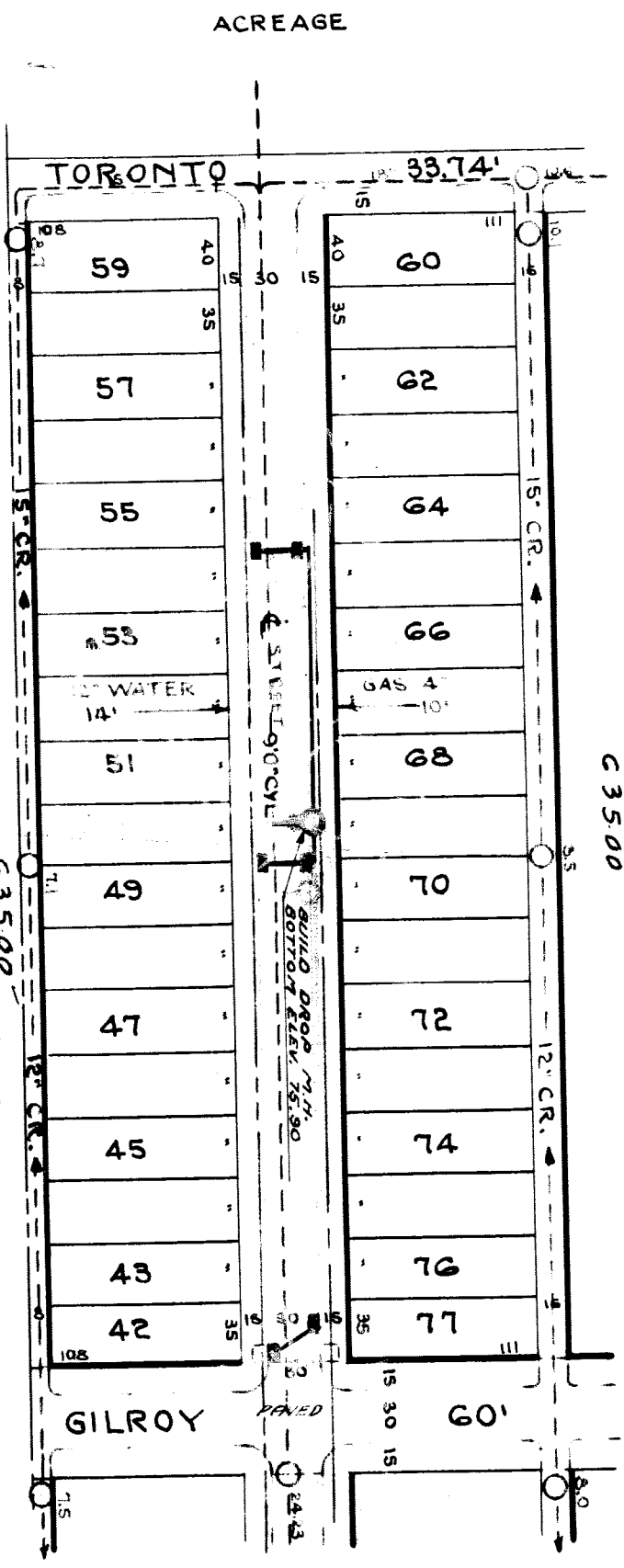
EXISTING POOLS & BASINS
 BENCH MARKS

12.201-85'E. ANNABELLE AT 2316 SHAEFER
 4'-E. END STONE STEP
 ARO HYD. 290'E. TORONTO S.S. LIDDESDALE
 S.W. COR. GILROY &

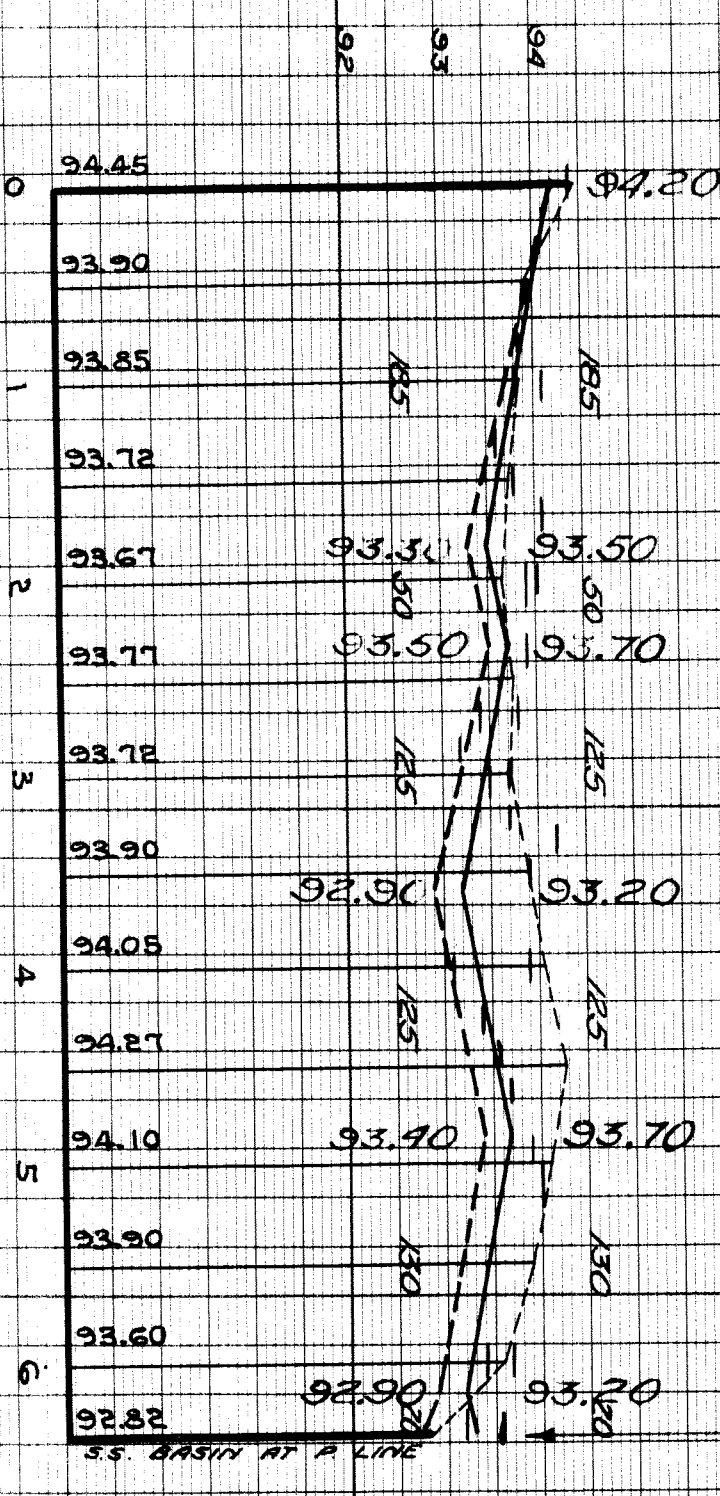
106.15
 96.42
 96.42

RECORD NO. 52 72
 INDEX TOPO NO. NO.
 NAME OF STREET
 FROM TORONTO TO GILROY
 TYPE OF PAVEMENT
 WIDTH

NUMBER OF SHEETS 1
 SHEET NO. 1



94.77 W	94.37 W	94.12	94.12 DR.	94.02	93.92 DR.	93.82 DR.	93.12	93.92	93.72 DR.	93.92 DR.	93.62	93.12	93.72	93.62
93.82	93.62	93.62	94.12	94.02	93.92	93.82	93.12	93.12	93.12	93.12	93.42	93.42	93.70	93.62
93.72	93.72	93.72	94.12	94.02	93.92	93.82	93.12	93.12	93.12	93.12	93.42	93.42	93.70	93.62
93.67	93.57	93.57	94.12	94.02	93.92	93.82	93.12	93.12	93.12	93.12	93.42	93.42	93.70	93.62
93.77	93.57	93.57	94.12	94.02	93.92	93.82	93.12	93.12	93.12	93.12	93.42	93.42	93.70	93.62
93.72	93.57	93.57	94.12	94.02	93.92	93.82	93.12	93.12	93.12	93.12	93.42	93.42	93.70	93.62
93.90	93.57	93.57	94.12	94.02	93.92	93.82	93.12	93.12	93.12	93.12	93.42	93.42	93.70	93.62
94.05	93.57	93.57	94.12	94.02	93.92	93.82	93.12	93.12	93.12	93.12	93.42	93.42	93.70	93.62
94.27	93.57	93.57	94.12	94.02	93.92	93.82	93.12	93.12	93.12	93.12	93.42	93.42	93.70	93.62
94.10	93.57	93.57	94.12	94.02	93.92	93.82	93.12	93.12	93.12	93.12	93.42	93.42	93.70	93.62
93.90	93.57	93.57	94.12	94.02	93.92	93.82	93.12	93.12	93.12	93.12	93.42	93.42	93.70	93.62
93.60	93.57	93.57	94.12	94.02	93.92	93.82	93.12	93.12	93.12	93.12	93.42	93.42	93.70	93.62
92.82	93.57	93.57	94.12	94.02	93.92	93.82	93.12	93.12	93.12	93.12	93.42	93.42	93.70	93.62



Result to R. ...