

DEPARTMENT OF PUBLIC WORKS
 CITY ENGINEER'S OFFICE - DIVISION OF PAVING DESIGN
 STREET PAVING PLAN

LIBERAL AVE.

E. P. L. HAYES AVE.
 45' E. OF W. P. L. BROCK AVE.

ASSIGN. NO.	3224-1
PETITION NO.	6411
SHEET OF	1
SHEETS	1

DESIGNED BY	S. SMITH
DRAWN BY	BEHM
CHECKED BY	J. F. BOSTON
APPROVED BY	J. F. BOSTON
ENGINEER OF STREETS	
ASSIST. CITY ENGINEER	

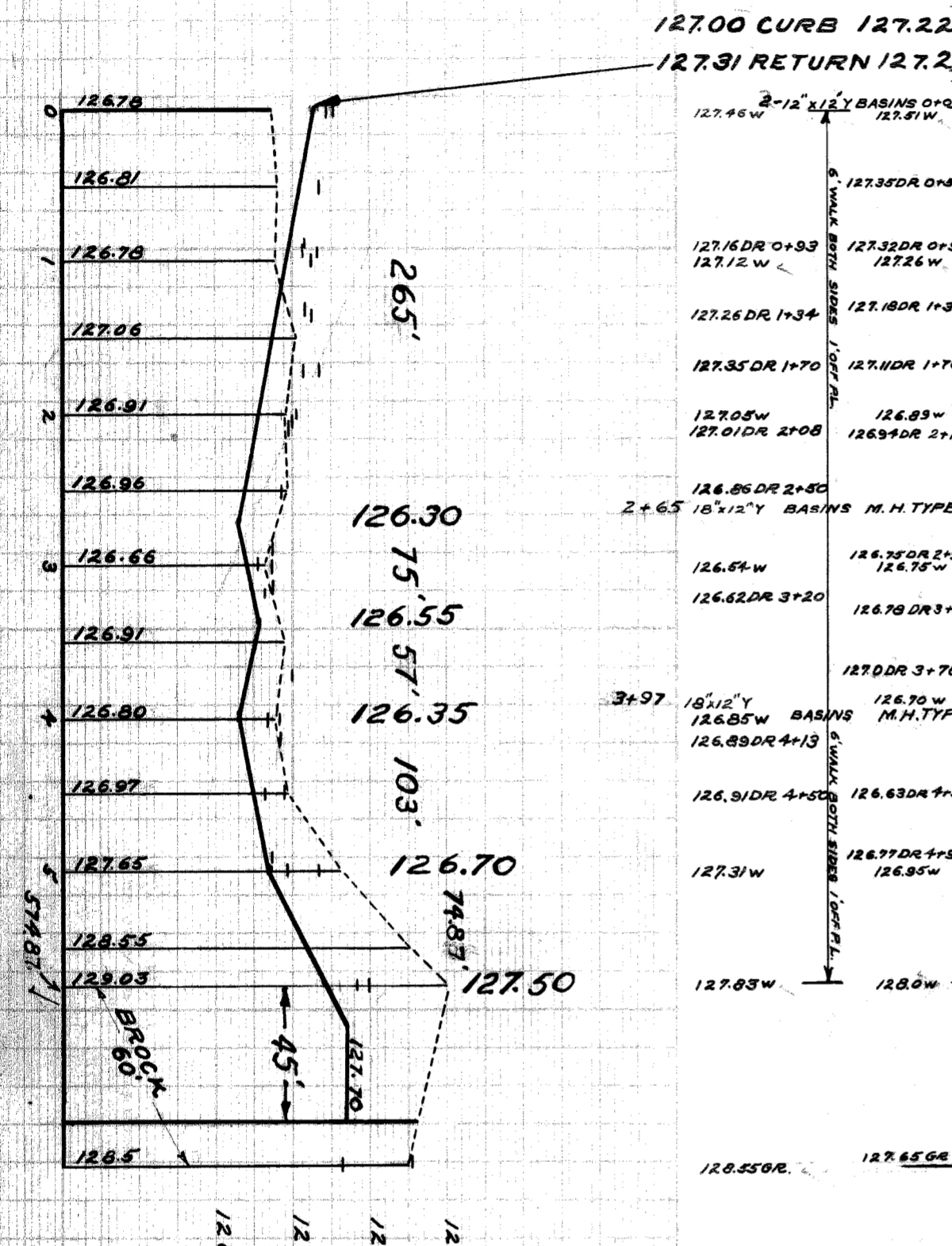
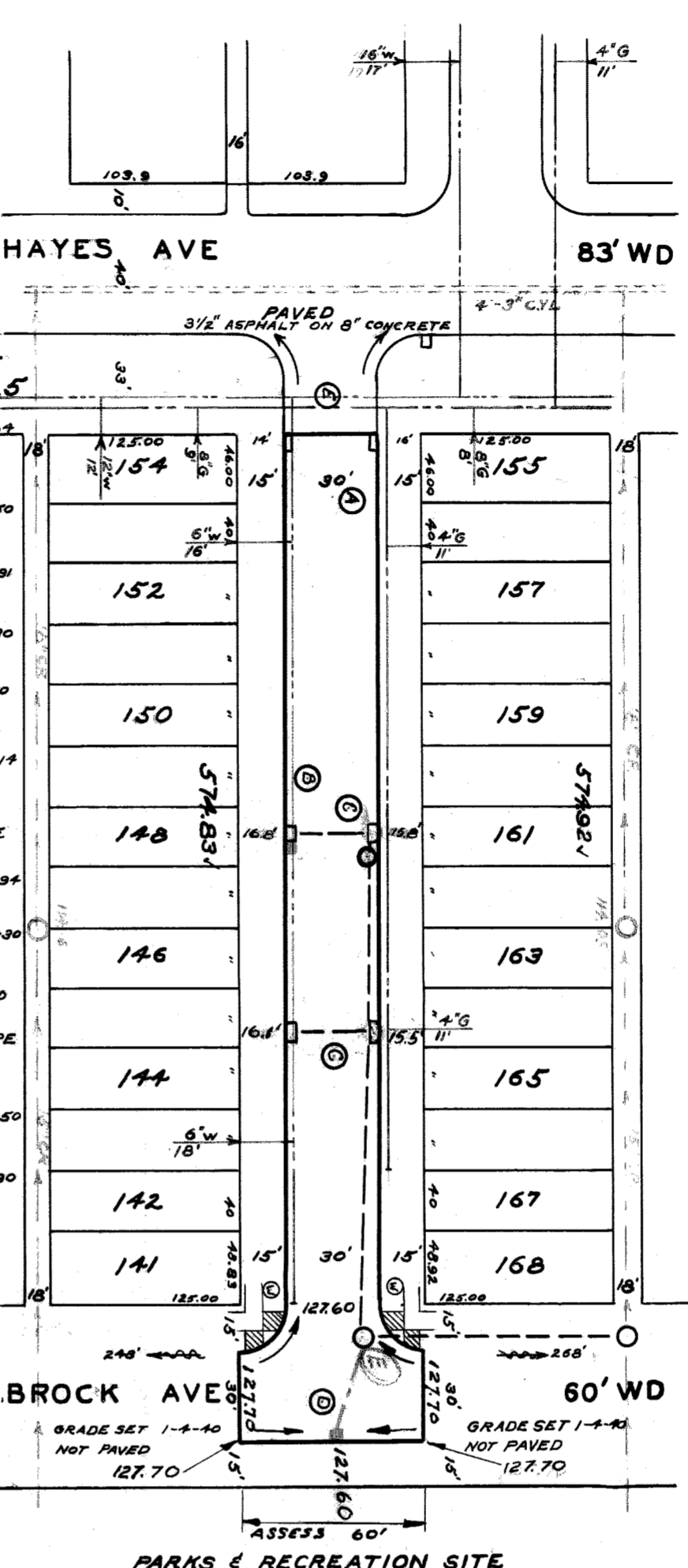
DATE	8/12/47
REQUESTED BY	EMMETT J. DAYTON
FORCE PAVE	C. C. RES. 3-16-48
ONE COURSE CONCRETE - INTEGRAL CURB	
UNIFORM THICKNESS AT INTERSECTIONS	
TYPE OF PAVEMENT	30'

DATE	2-16-48
LEVELS	2-19-48
CHECKED	5.5
COMPUTED	P.M.
PLAN	5.5
PROFILE	R ₂
GRADE	R ₂
LENGTH	60487
AREA	30.00
VOLUME	63487
COST ESTIMATING	
COST PER LINEAL FOOT	30.24
COST PER SQUARE YARD	1.50
COST PER SQUARE FOOT	7.50

QUANTITIES	ESTIMATED	FINAL
REVISIONS	1093	190
NEW CURB	1980	192
PAVING	1980	171
SIDWALK	40	4
MANHOLE	3	1
BASINS	2	4
CONSTRUCT	103	103
ADJUST	164	164
CONSTRUCT	103	164
ADJUST	164	164

REVISIONS	C. 938, C-587
SUPPLEMENTAL DRAWINGS	C-938, C-587
C-924	C-930
C-925	C-924
C-926A	C-985
C-927	C-988

NOTE:
 BEFORE STARTING CONSTRUCTION CONTRACTOR MUST CHECK WITH UTILITIES FOR LOCATIONS OF EXISTING STRUCTURES WHETHER OR NOT INDICATED ON PLANS
 PLAN SCALE DISTORTED
 LOTS & ALLEYS 1"-100'
 STREET WIDTHS 1"-50'
 DRAINAGE COMPLETED Nov 30, 1939
 PAVING COMPLETED C.C.-9-14-48



- BENCH MARKS:**
- # 95-251 S.E. CORNER STATE FAIR & HAYES AVE. P.L.B.M. ELEV. 95-251
 - S.W. CORNER LIBERAL & BROCK AVE. 129.98
 - CORNER OF MAINING & BROCK AVE. 130.26
 - CORNER OF TACOMA & BROCK AVE. 131.77
 - CORNER OF STATE FAIR & BROCK AVE. P.L.B.M. 128.11

- NOTES:**
- ABANDON & EXISTING 12" BASINS. PLUG OUTLETS WITH CLASS "C" CONCRETE REMOVE OR FILL BASIN WITH CLASS "C" CONCRETE.
 - RECONSTRUCT 1 EXISTING 18"x12" Y BASIN, AT CURB LOCATION, WITH MODIFIED 12" TYPE "C" BASINS WITH TRAMP & CONNECT TO EXISTING OUTLETS AS SHOWN. BASINS & TRAMP TO BE ENCASED IN 6" OF CLASS "C" CONCRETE.
 - ADJUST TOPS OF 2 EXISTING 5"x18" AND 1-18"x12" Y BASINS WITH FLAT TYPE GRATES & FRAMES.
 - CONSTRUCT 1 STD. 18"x12" Y FLAT TYPE BASIN & CONNECT TO EXISTING OUTLET AS SHOWN.
 - CONTRACTOR SHALL REMOVE CONCRETE HEADER & BROCKEN ASPHALT BACK OF JUNCTION AS REQUIRED & FILL WITH COLD POTALS FOR COST.
 - CONSTRUCT 192 SQ. FT. OF STANDARD 4" SIDEWALK.
 - ADJUST TOPS OF 4 WATER-OR SEWER MANHOLES.
 - BACKFILL SEWER PIPE TRENCHES UNDER PROPOSED PAVEMENT WITH APPROVED SAND & GRAVEL MATERIAL. OTHERWISE FILL & TRAMP WITH APPROVED EARTH LAYERS AS REQUIRED.
 - DIRT ROADSWAYS AT END OF PAVEMENT SHALL BE GRADED BACK & STONED & DEEP UNIFORMLY FOR A DISTANCE OF 10 FT. TO MEET EXISTING GRADES 42 CU YDS. INCLUDED UNDER EXCAVATION TOTALS FOR COST.
 - CONTRACTOR SHALL FURNISH ALL NECESSARY MATERIALS, INCLUDING CASTINGS & SHALL HAVE ALL SALVAGEABLE MATERIALS TO BE WARD AT STATE FAIR & JOHN R STS.
 - ALL CURBS WITHIN STREET INTERSECTION TO BE SEPARATE TYPE II OR INTEGRAL TYPE III.

94924

Manhole Rebuilt (See C.O.F. 2 p. 10-2)