

REVISION	BY	DATE
GRADE CHANGED	R.H. HELLER	10/8/51
STA. 0+00 - STA. 3+00	9-26-51	AM
SUPPLEMENTARY DETAILS		
C-324A	C-390	C-587
C-328	C-384	C-733
C-326A	C-585	C-739
C-327	C-586	C-739A
C-739B	C-938	C-938

NOTE:
 BEFORE STARTING CONSTRUCTION CONTRACTOR MUST CHECK WITH UTILITIES FOR LOCATIONS OF EXISTING STRUCTURES WHETHER OR NOT INDICATED ON PLANS.
 PLAN SCALE DISTORTED
 LOTS & ALLEYS: 1"=100'
 STREET WIDTHS: 1"=50'
 BY: D.P.W.
 DRAINAGE COMPLETED 10-12-51
 PAVING COMPLETED C.C. 12-30-52

QUANTITIES	ESTIMATED	FINAL
LOTS	CITY	CITY
893	39	
2026	47	
348	288	
1/8	1	
1/10	2	
1/10	1	

NO. SCALE	1"=100'	DATE	10/8/51	PAGE	65
PLAN SCALE	1"=2'	DATE	6-23-51		
CITY	AVB.	CITY	AVB.		
TOTAL	1176	TOTAL	588		

DESIGNED BY: R.T. ALBERTS
 DRAWN BY: Scribe
 CHECKED BY: Scribe
 APPROVED BY: R.H. Heller
 REGISTERED PROFESSIONAL ENGINEER

CONTRACT NO. P.W. 1806 F

DEPARTMENT OF PUBLIC WORKS DETROIT
 CITY ENGINEERS OFFICE - DIVISION OF PAVING DESIGN
 STREET PAVING PLAN
LESURE

FROM: 588.28' S. OF S.P.L. OF EATON
 TO: S.P.L. OF EATON

RECORD NO. 68 84

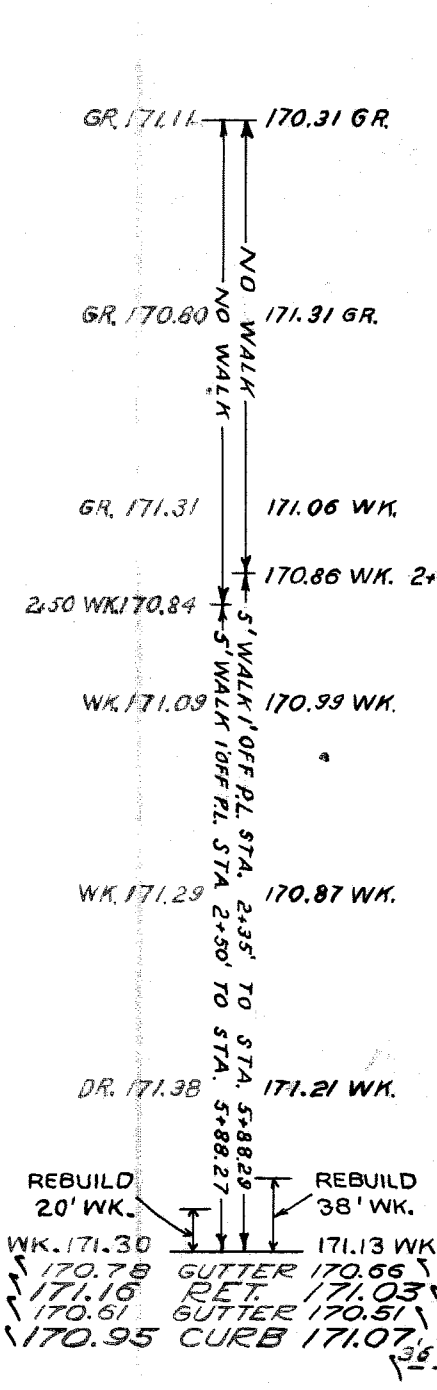
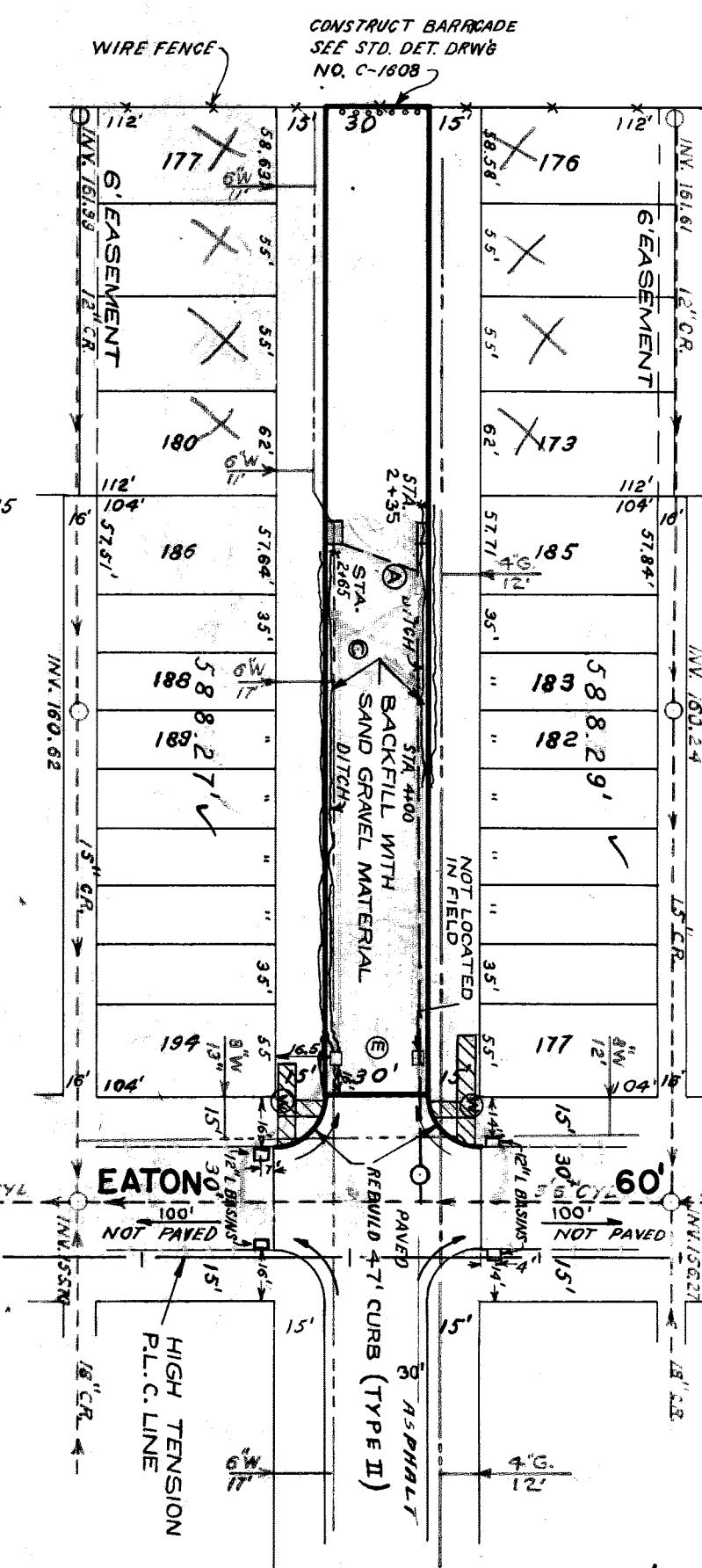
INDEX TO NO. 68 84

NAME OF SHEET: 1 OF 1 SHEETS

SECTION NO. 5330

DATE: 10/8/51

SCALE: 30' = 1"



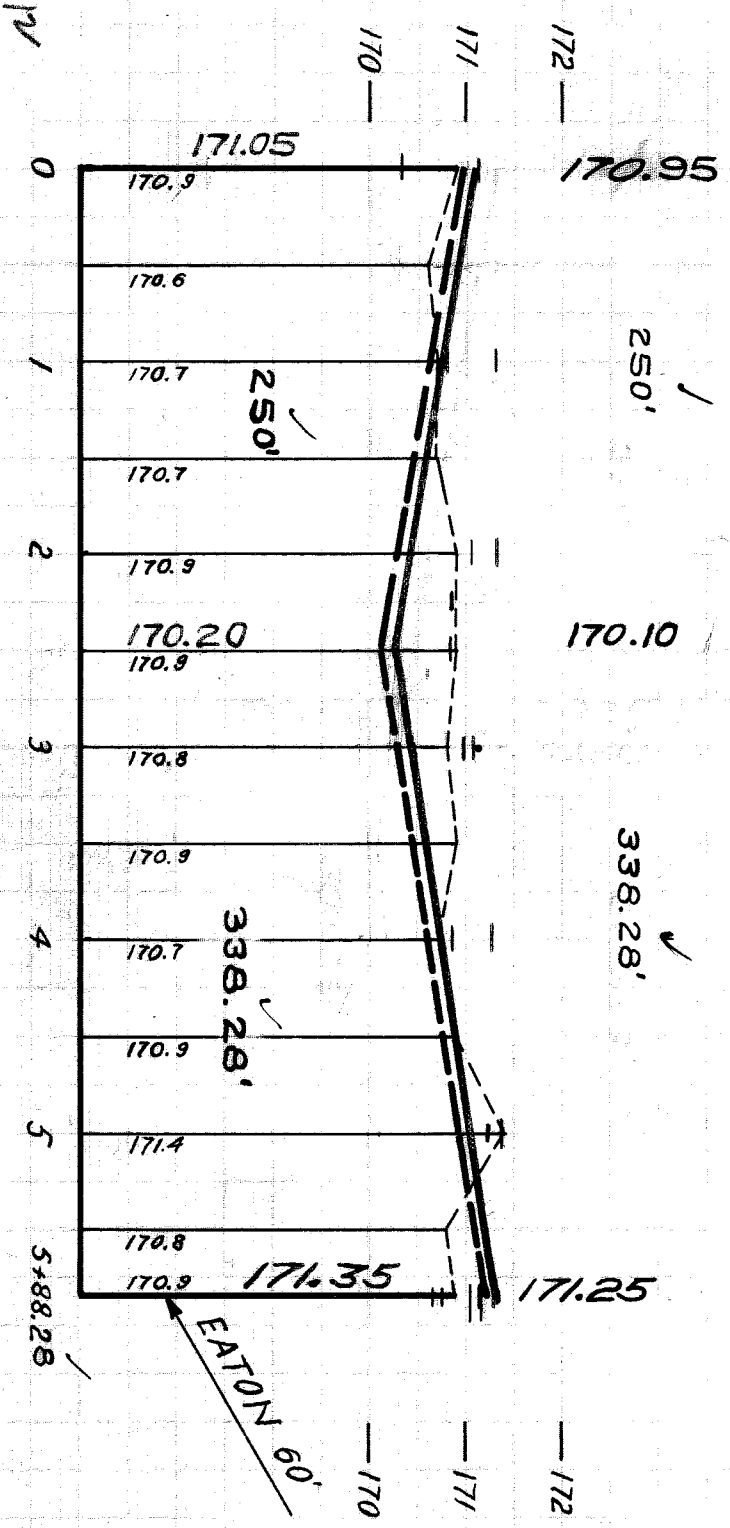
cost
 7.14 per line foot construction

\$4918

NOTE:
 FOR SYMBOLS @ ETC. SEE STD. DET. DRAW'G NO. C-327
 NOTE:
 D.P.W. TO CONSTRUCT DRAINAGE, CONTRACTOR TO ADJUST

BENCH MARKS
 P.L.B.M. 84-255A N.E. COR. LYNDON & SNOWDEN
 4 ON HYD. N.E. COR. LESURE & EATON
 4 ON HYD. E. SIDE LESURE STA. 2+40

ELEV.
 169.054
 174.44
 173.98



cost
 7.14 per line foot construction

\$4918