

CONTRACT NO. RW/1872 P

DEPARTMENT OF PUBLIC WORKS DETROIT  
CITY ENGINEERS OFFICE -- DIVISION OF PAVING DESIGN  
**STREET PAVING PLAN**  
**LESURE**  
FROM **N.P.L. PICKFORD**  
TO **S.P.L. JAMES COUZENS HIGHWAY**

INDEX NO. 52-5  
NO. 6486  
RECORD NO. [ ]  
SHEET NO. 1 OF 1  
30836

DESIGNED BY: S.F. DAVIS  
DRAWN BY: Stanley Bulmer  
CHECKED BY: BEAM  
APPROVED: [Signature]  
ASSISTANT ENGINEER

|       |              |               |         |
|-------|--------------|---------------|---------|
| BOOK  | T102         | PAGE          | 28      |
| LEVEL | 8-18-50      | DATE DRAWN    | 9-15-50 |
| PLAN  | S.B. PROFILE | S.B. COMPUTED | G.B.    |
| CITY  | 595 50'      | LENGTH        | 297 75' |
| TOTAL | 63 04'       | LENGTH        | 26 52'  |
| CITY  | 648 94'      | LENGTH        | 324 27' |

| QUANTITIES  | ESTIMATED | FINAL |
|-------------|-----------|-------|
| LOTS        | 372       | 119   |
| CONCRETE    | 1 072     | 63    |
| PAVING      | 86.8      | 195   |
| ADJUST      | 13        | 100   |
| RE-CONCRETE | 288       | 25    |
| RE-CONCRETE | 2         | 2     |
| RE-CONCRETE | 70        | 70    |

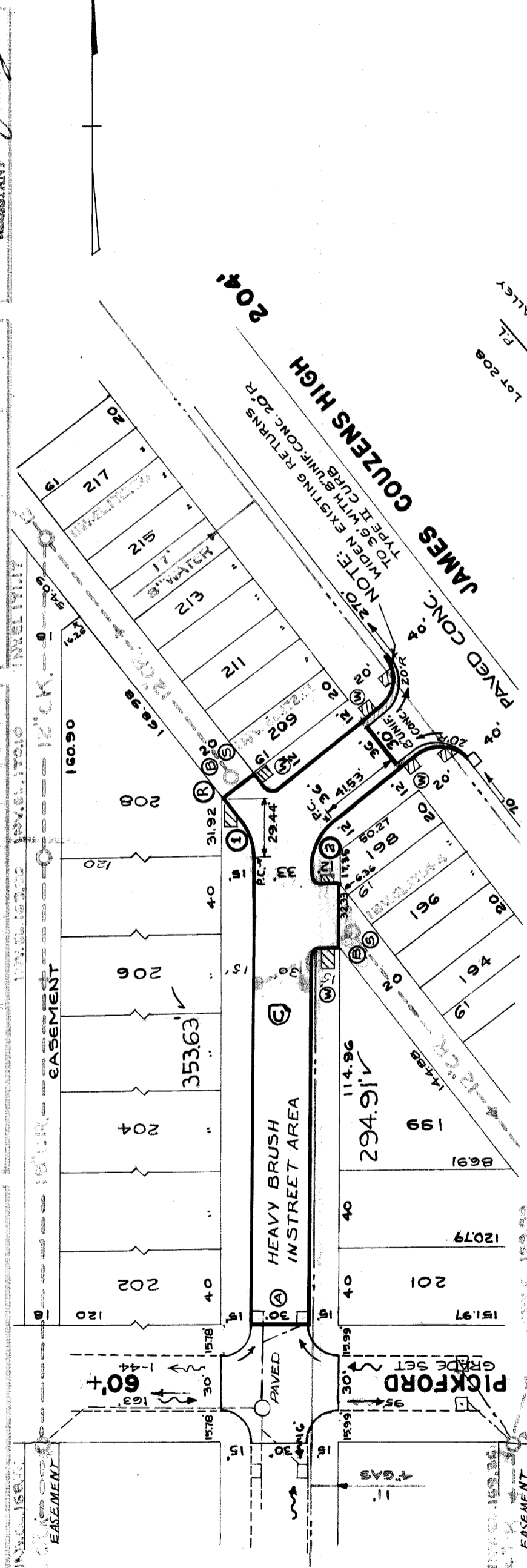
PLANS COMPLETE 9-5-52  
PAVING COMPLETE C.C. 9-9-52

|         |        |       |        |
|---------|--------|-------|--------|
| REVISED | C-248  | C-507 | C-719B |
| REVISED | C-325  | C-717 | C-938  |
| REVISED | C-126A | C-585 | C-717  |
| REVISED | C-327  | C-565 | C-938  |

PET. NO. 7630 JOE PANACKIA 1-22-52

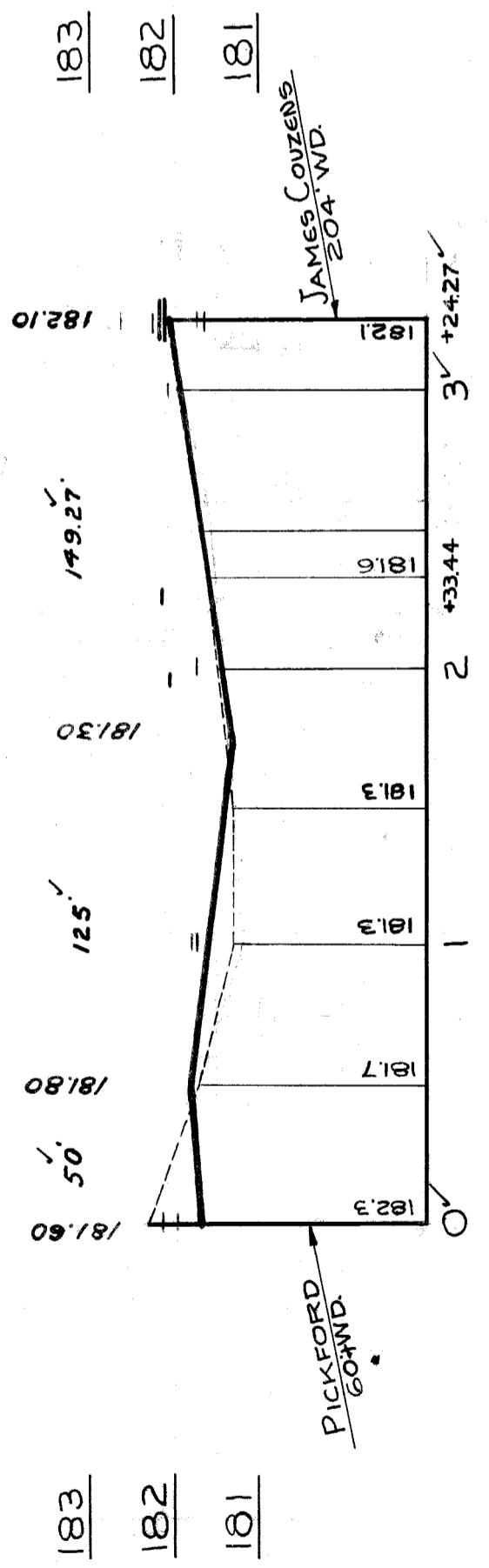
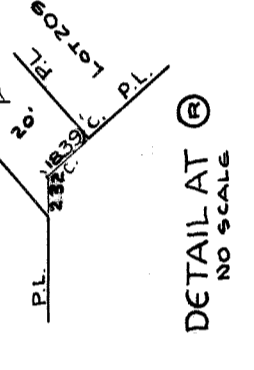
**BENCH MARKS**  
ARROW ON HYD. NW COR. THATCHER & STANSBURY.  
ARROW ON HYD. NW COR. LESURE & THATCHER.  
ARROW ON HYD. NW COR. CURTIS & LESURE.  
ARROW ON HYD. W. SIDE LESURE OFF. HOUSE #18261.  
ARROW ON HYD. S.W. COR. TRACEY & PICKFORD.  
ARROW ON HYD. S. E. COR. LESURE & PICKFORD.  
ARROW ON HYD. NW COR. LESURE & JAMES COUZENS.  
ARROW ON HYD. SW. COR. TRACEY & PICKFORD.

FOR SYMBOLS (A) ETC., SEE STD. DETAIL DRAWING NO. C-327



**CURVE DATA**

|    |          |    |          |
|----|----------|----|----------|
| A: | 5146'56" | R: | 3012'57" |
| T: | 1000'    | A: | 2001'    |
| S: | 11:70    |    |          |



54906