

DEPARTMENT OF PUBLIC WORKS DETROIT

CITY ENGINEER'S OFFICE - DIVISION OF PAVING DESIGN

STREET PAVING PLAN A.P. 199-21

LESURE

30' N. OF S. P.L. OF EIGHT MILE RD.

814.8 ONE COURSE CONCRETE - INTEGRAL CURB

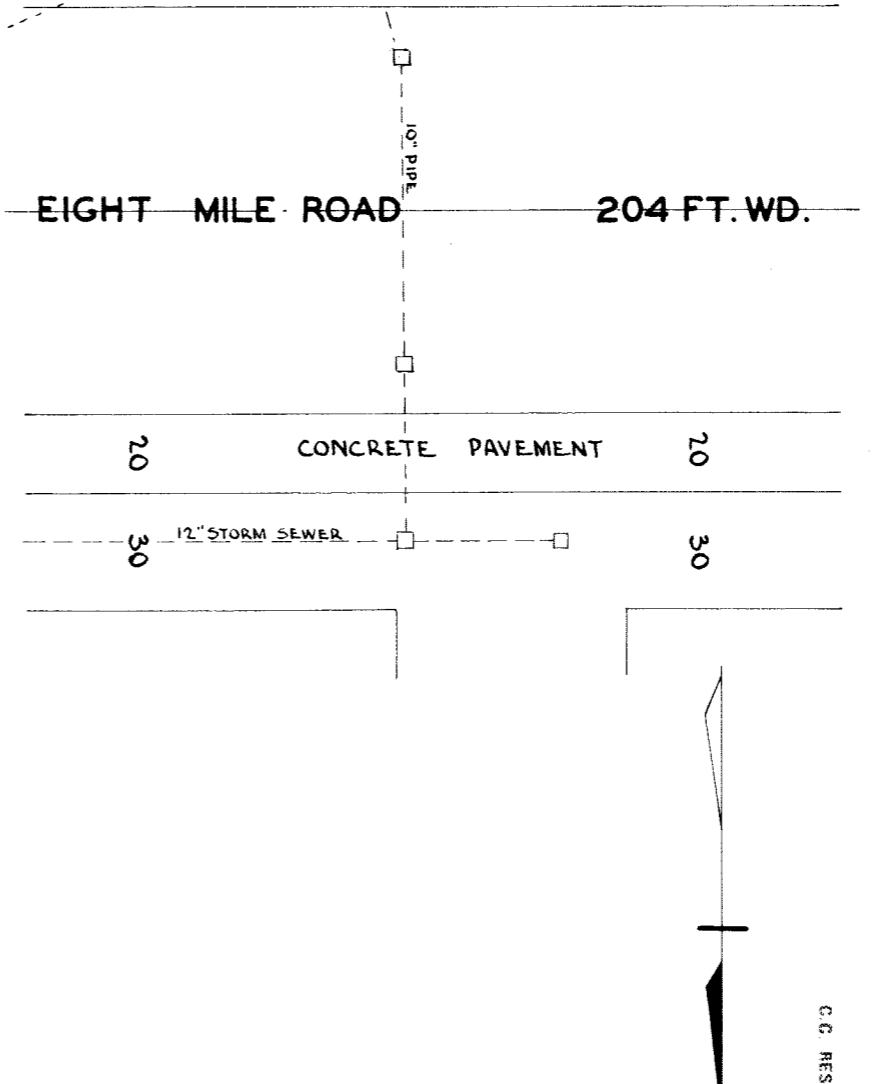
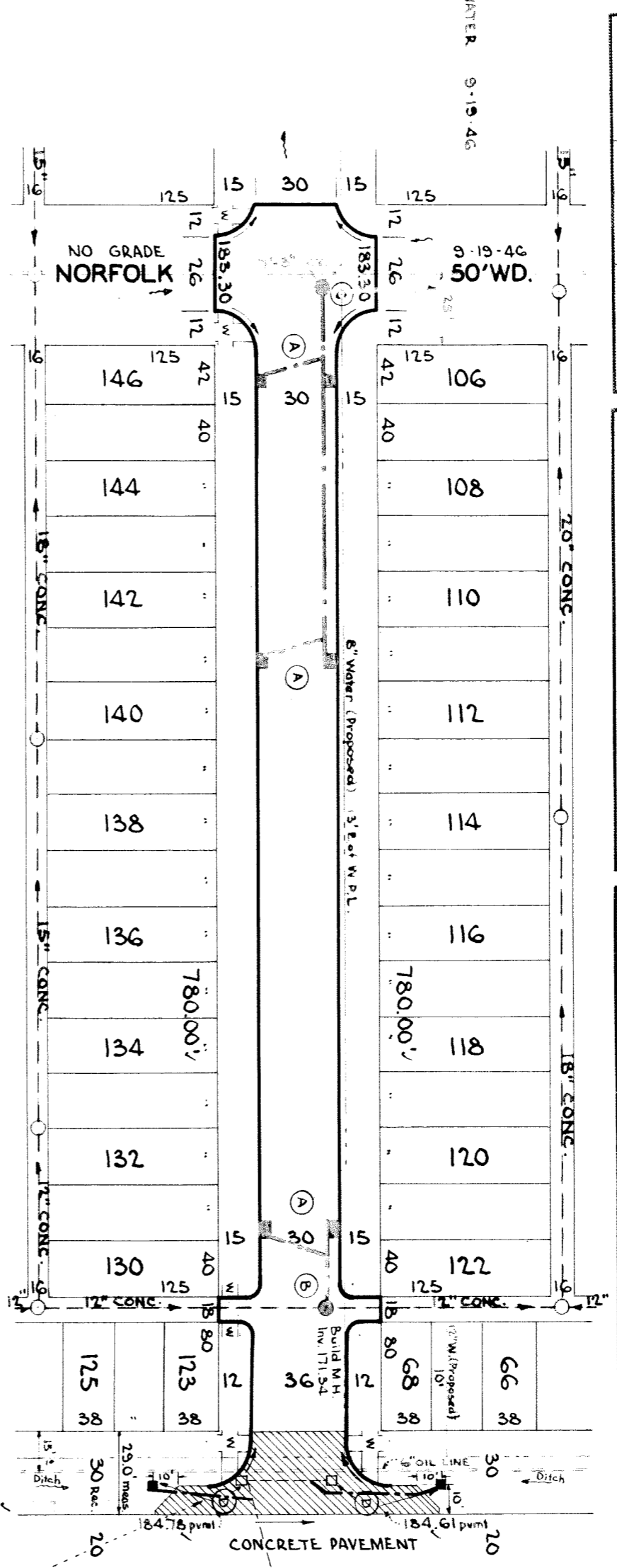
Table with columns: NAME OF STREET, FROM, TO, RECORD NO., INDEX TO P.O., REQUESTED BY, DATE.

Table with columns: DESIGNED BY, DRAWN BY, TRACED BY, CHECKED BY, APPROVED, ENGINEER OF STREETS, ASSISTANT CITY ENGINEER.

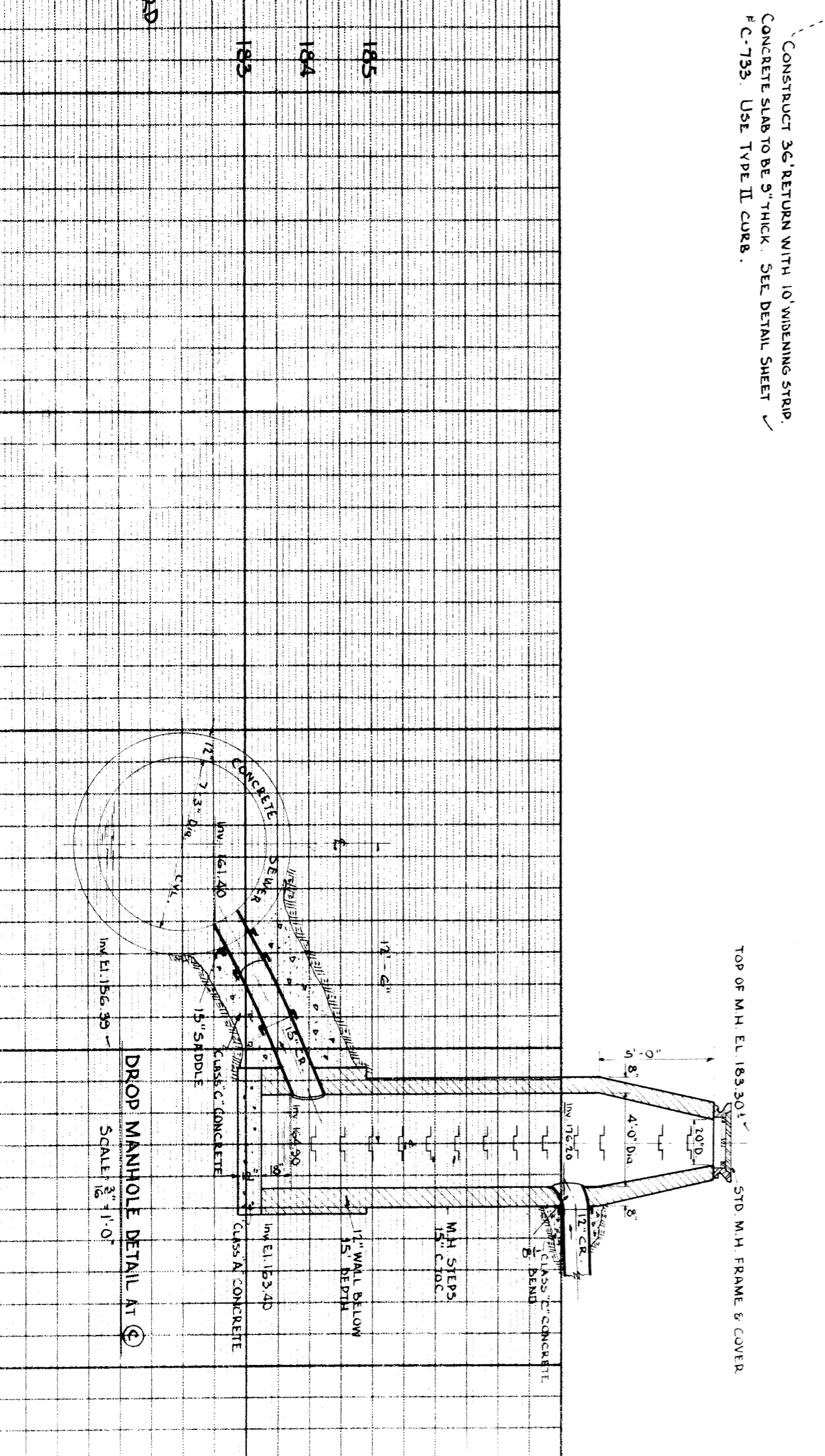
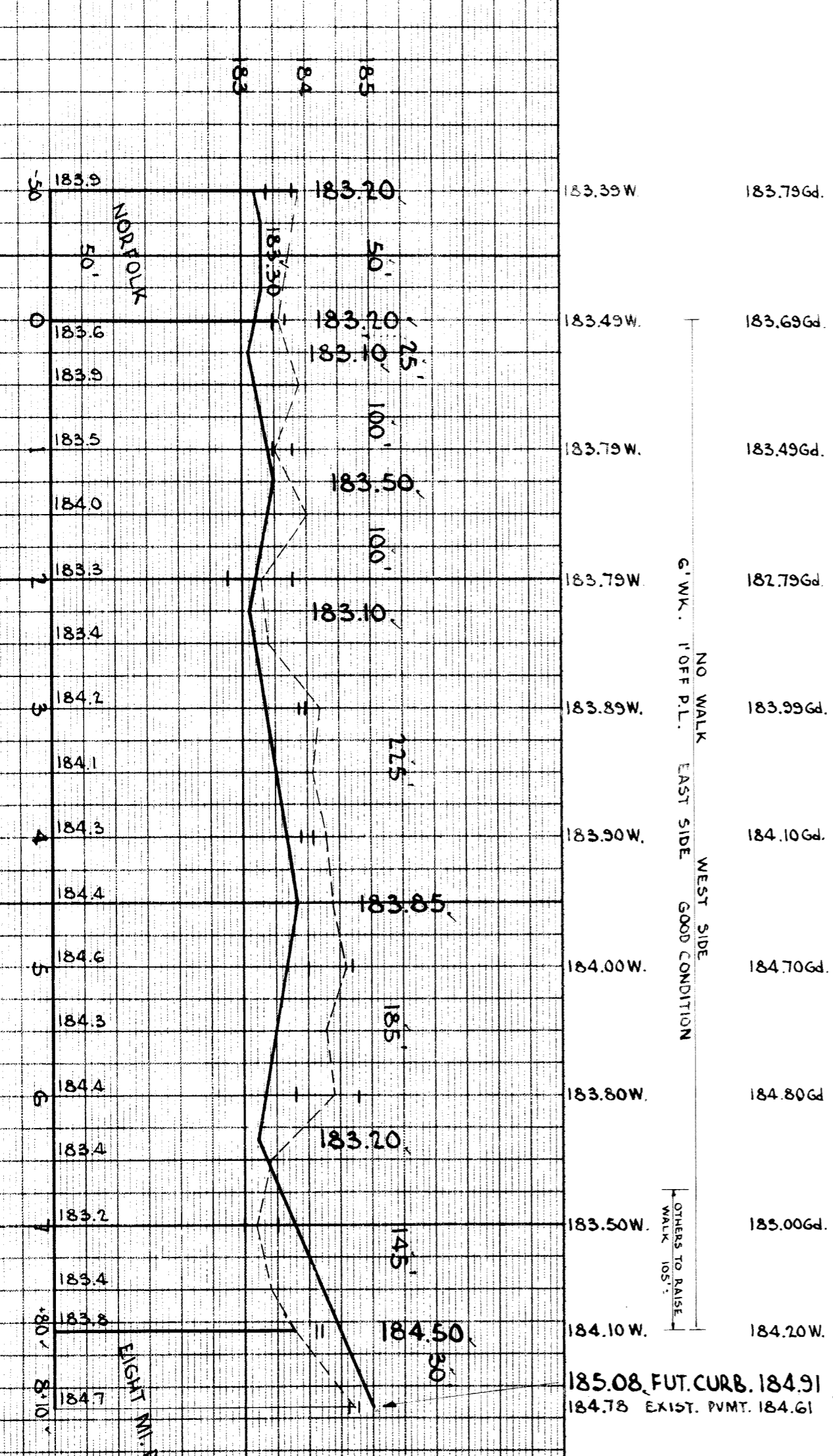
Table with columns: PLAN, PROFILE, P.M., P.M., GRADE, P.M., CHECKED, CHECKED, CHECKED, CHECKED.

Table with columns: QUANTITIES, ESTIMATED, FINAL. Sub-headers: EXCAVATION, NEW CURB, PAVING, SIDEWALK, MANHOLES, BASINS, SEVERALS.

Table with columns: SEWER REVISIONS, SUPPLEMENTAL DRAWINGS, NOTE.



NOTE: AT (A) CONSTRUCT 6" STD. 18x12" BINS COMPLETE AND CONNECT TO OUTLETS AS SHOWN. AT (B) CONSTRUCT 1" STD. SEWER MANHOLE COMPLETE. AT (C) CONSTRUCT 1" DROP MANHOLE COMPLETE AND CONNECT TO EXISTING 7" S" PUBLIC SEWER AS SHOWN. SEE DETAIL SHEET # C-325. AT (D) SHIFT 2" EXISTING WAYNE COUNTY TILE CATCH BASINS TO NEW LOCATIONS AND CONNECT TO EXISTING OUTLETS AS SHOWN. SUPPLY NEW PIPE IF NECESSARY. AT (E) CONSTRUCT 6x6 5/8 FT. OF STD. 4" CONCRETE WALK, 6" WIDE. ALL CURBS WITHIN STREET INTERSECTIONS TO BE SEPARATE TYPE II OR INTEGRAL TYPE III.



SCALE 1/2" = 1'-0"