

DEPARTMENT OF PUBLIC WORKS DETROIT
 CITY ENGINEER'S OFFICE ... DIVISION OF PAVING DESIGN
STREET PAVING PLAN

LESURE

FROM **N.P.L. CLARITA AVE.**
 TO **9.04' N. OF S.P.L. SEVEN MILE RD.**

TYPE OF PAVEMENT: **ONE COURSE CONCRETE - INTERNAL CURB** WIDTH: **30.836**

REQUESTED BY: *Walter B. ...* DATE: _____

SEWER REVISIONS	NOTE
C-324A	NOTE: BEFORE STARTING CONSTRUCTION CONTRACTOR MUST CHECK WITH UTILITIES FOR LOCATIONS OF EXISTING STRUCTURES WHETHER OR NOT INDICATED ON PLANS. PLAN SCALE DISTORTED LOTS & ALLEYS 1" = 100' STREET WIDTHS 1" = 50'
C-325	
C-326-A	
C-327	
C-596	
SUPPLEMENTAL DRAWINGS:	C-733
C-390	C-738
C-524	C-739 A
C-585	C-739 B
C-596	C-739 B

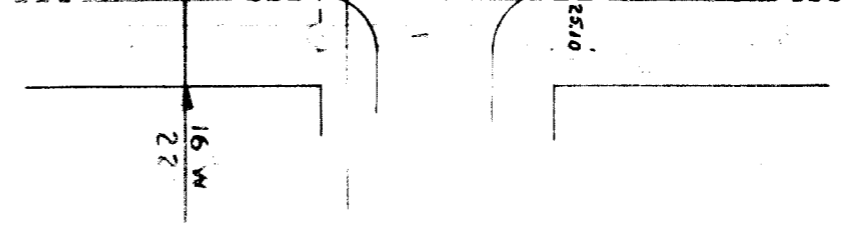
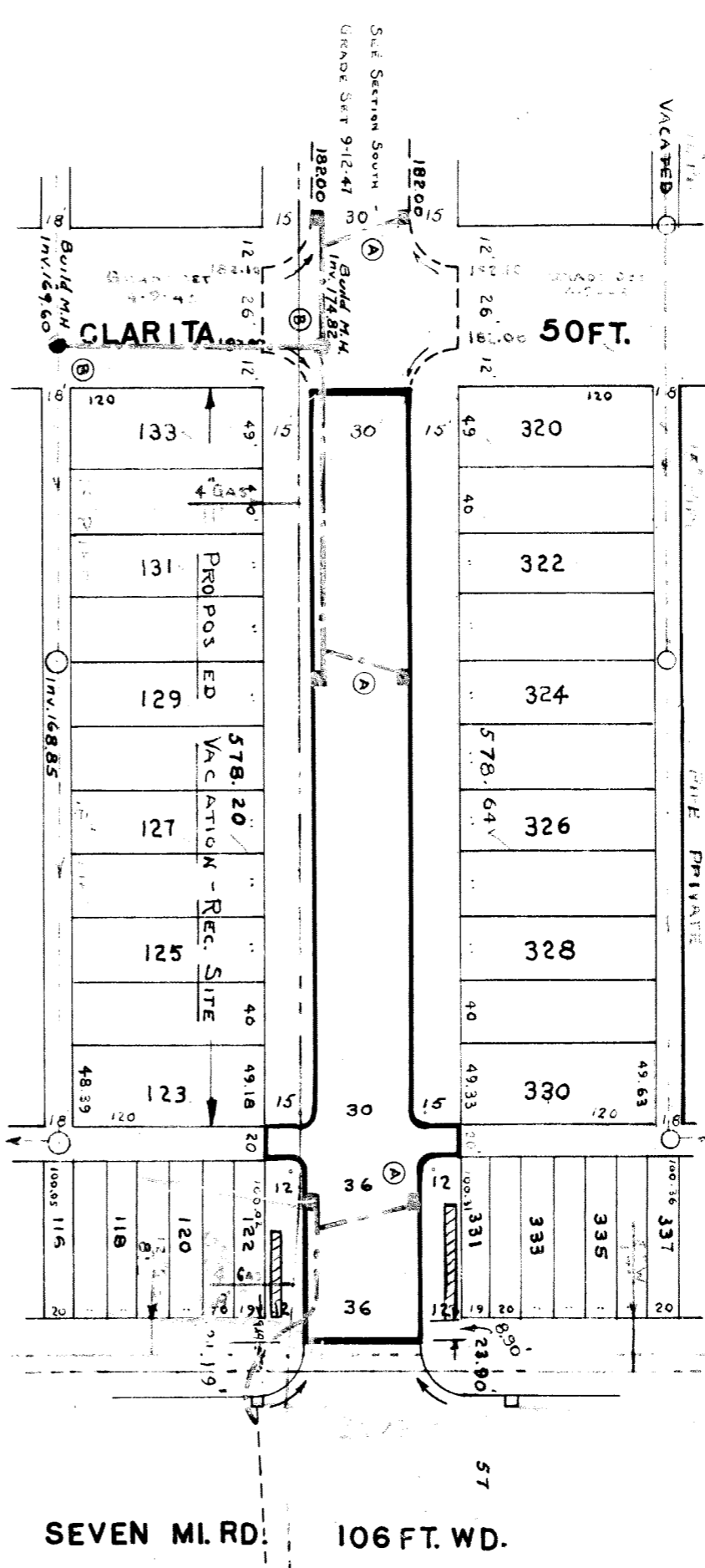
QUANTITIES	ESTIMATED	FINAL
EXCAVATION CU YDS.		
NEW CURB LIN FT.		
PAVING SQ YDS.		
SIDEWALK SQ FT.		
MANHOLES CONSTRUCT ADJUST		
SEWERS 12" CONSTRUCT		
SEWERS 15" CONSTRUCT		

LOT	CITY	ESTIMATED	FINAL
320			
322			
324			
326			
328			
330			
333			
335			
337			

VAR SCALE 1" = 2'	BOOK 570	PAGE 77
DATE LEVELS 11-13-47		
DATE DRAWING 11-24-47		
CITY 21	58,091	29,042
TOTAL 21	1,174,931	587,466

DESIGNED BY: **SAM A. SMITH**
 DRAWN BY: **PURDY**
 CHECKED BY: **S.A.S. - Robert ...**
 APPROVED BY: *[Signature]*
 ENGINEER OF STREETS
 ASSOCIATE ENGINEER

CARD NO. _____
 INDEX TOPO. NO. _____
 RECORD NO. **6486**
 NAME OF STREET: **N.P.L. CLARITA AVE.**
 FROM: **9.04' N. OF S.P.L. SEVEN MILE RD.**
 TO: **8:6:8**
 SHEET 1 OF 1 SHEETS
 ASSICN NO. 304-4
 PETITION NO. _____



NOTES:
 At (A) Construct 6 Std. 18"x12"-Y-Basins Complete And Connect To Existing Sewers As Shown
 At (B) Construct 2 Std. Manholes Complete
 Contractor Shall Furnish And Install Std. Flat Type Catch Basin Frames And Covers
 Contractor Shall Haul All Old Castings To D.P.W. Yard At State Fair & John R
 Contractor Shall Grade Back From End Of Pavement A Distance Of At Least 10 Ft. To Fit New Pavement
 Contractor Shall Back Fill Sewer Pipe Trench With Approved Sand Gravel Material

REMARKS TO WALK W/SIDE:
 181.99
 181.97
 181.94
 181.91
 181.88
 181.85
 181.82
 181.79
 181.76
 181.73
 181.70
 181.67
 181.64
 181.61
 181.58
 181.55
 181.52
 181.49
 181.46
 181.43
 181.40
 181.37
 181.34
 181.31
 181.28
 181.25
 181.22
 181.19
 181.16
 181.13
 181.10
 181.07
 181.04
 181.01
 180.98
 180.95
 180.92
 180.89
 180.86
 180.83
 180.80
 180.77
 180.74
 180.71
 180.68
 180.65
 180.62
 180.59
 180.56
 180.53
 180.50
 180.47
 180.44
 180.41
 180.38
 180.35
 180.32
 180.29
 180.26
 180.23
 180.20
 180.17
 180.14
 180.11
 180.08
 180.05
 180.02
 180.00

