

CONTRACT NO. **PW 2633CV**

DEPARTMENT OF PUBLIC WORKS
CITY ENGINEERS OFFICE - DIVISION OF PAVING DESIGN
STREET PAVING PLAN

LENORE

FROM **2370'S OF N.P.L. OF GRAND RIVER**
TO **40' N. OF S.P.L. OF SEVEN MILE ROAD**

DATE OF PAVING: 8 6 8
TYPE COURSE CONCRETE - INTEGRAL CURB
LIMIT OF PAVEMENT: 8 6 8
8" UNIFORM AT STREET INTERSECTIONS EXCEPT AS NOTED

CONTRACT APPROVED: **PET # 3625 CATHERINE MOUE 11-3-54**

CARD NO. **55-4**
INDEX TO NO. **71**
NO. **122**

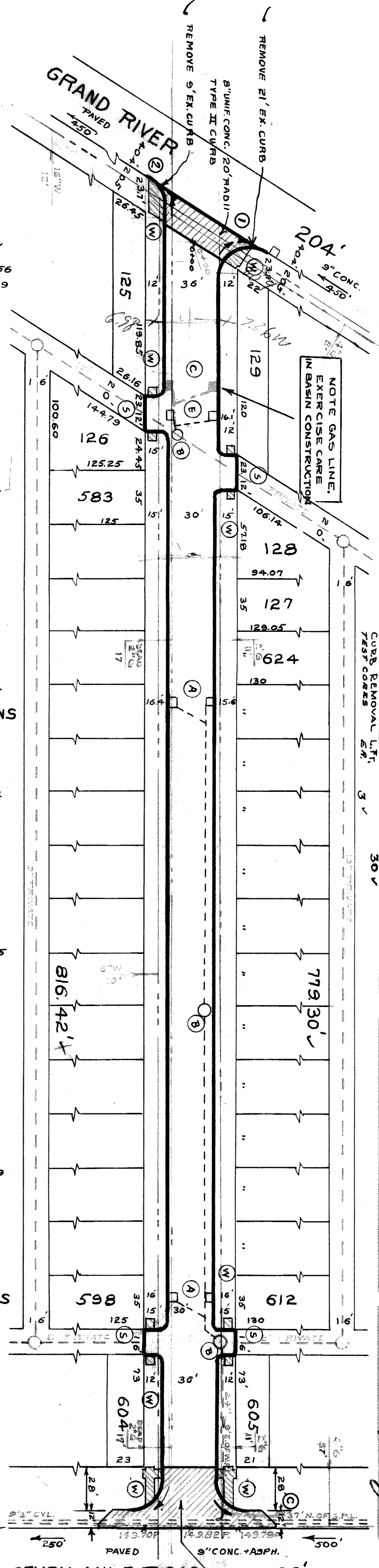
DESIGNED BY: *[Signature]*
DRAWN BY: *[Signature]*
CHECKED BY: *[Signature]*
APPROVED BY: *[Signature]*
CITY ENGINEER

NO. SCALE	1" = 60'	1739'	44'
SCALE	1" = 2'	NOV. 1891	PAGE 13
PLAN	AB.	NOV. 1891	2-11-55
RES.	J.K.	NOV. 1891	2-21-55
NO. OF SHEETS	1	NO. OF SHEETS	1
TOTAL	172312	TOTAL	86156
CITY	151748	CITY	75874
STATE	20564	STATE	10282
CITY	172312	CITY	86156

QUANTITIES	ESTIMATED	FINAL
EXCAVATION CU YDS	129	227
NEW CURB LI. LIN. FT.	145	145
PAVING 8" C.B. 80. YDS	269	269
8" UNIF.	403	403
C. CONC. DR. 54 FT.	360	360
SIDEWALK - 50' 4.50 FT.	100	100
MANHOLES CONE RE-CONSTRUCT	1	1
RE-CONSTRUCT	4	4
ADJUST	3	3
CONSTRUCT	100	100
CONSTRUCT	30	30
CONSTRUCT	30	30

NOTE: BEFORE STARTING CONSTRUCTION CONTRACTOR MUST CHECK WITH UTILITIES FOR LOCATIONS OF EXISTING STRUCTURES WHETHER OR NOT INSTALLED ON PLANS.
PLAN SCALE DISTORTED
LOTS & ALLEYS: 1" = 60'
STREET WIDTHS: 1" = 60'
DRAINAGE COMPLETED 12-17-47
PAVING COMPLETED C.C. 10-25-55

REVISIONS	OLD MAP 3-18-41	
GAS LINE NOTE ADDED	G-10-25-55 M.K./S	
SUPPLEMENTARY DETAILS		
C-1224	C-587	C-739B
C-225	C-524	C-733
C-326A	C-585	C-739
C-327	C-586	C-739A
		C-1608
		C-1783



148.34	0-18.56 WK.	147.94	GUTTER	147.94	✓
147.51	WK.	148.30	CURB	148.30	✓
147.90	WK. 0+18.56	147.90	WK. 0+29		
146.92	WK.	147.86	WK.		
147.73	WK. 1+01	147.83	WK.		
147.72	WK. 1+01	147.97	WK. 1+38		
147.82	WK. 1+24	148.25	WK. 1+62		
147.82	DR. 1+62	148.38	DR. 1+86		
147.82	DR. 1+86	148.51	WK.		
147.82	DR. 2+35	148.63	WK.		
147.82	WK. 2+35	148.40	DR. 2+95		
147.82	WK. 2+35	148.45	WK.		
147.94	DR. 3+30	148.27	WK.		
148.14	WK.	148.36	DR. 3+62		
148.21	WK.	148.40	WK.		
148.32	WK. 4+28	148.55	WK.		
148.32	DR. 4+78	148.82	DR. 4+65		
148.35	WK.	148.97	DR. 5+00		
148.51	WK. 5+16	148.93	WK.		
148.51	WK. 5+16	149.06	WK.		
148.51	DR. 5+55	149.10	DR. 6+09		
148.51	WK. 6+38	149.05	WK.		
148.51	WK. 6+38	148.98	WK. 6+75		
148.51	WK. 6+38	148.57	WK. 6+78		
148.51	WK. 6+38	148.63	WK.		
148.51	WK. 6+38	148.71	WK. 7+09		
148.51	WK. 6+38	148.76	WK. 7+25		
148.51	WK. 6+38	148.92	WK.		
148.51	WK. 6+38	149.00	WK.		
148.51	WK. 6+38	149.36	WK.		
148.51	WK. 6+38	149.44	WK. 8+46		
148.51	WK. 6+38	149.70	PAV'T.	149.79	

1+15 2-18" x 12" "Y" BASINS
3+03 2-18" x 12" "Y" BASINS
6+92 2-18" x 12" "Y" BASINS

BENCH MARKS
P.L.B.M. 123-250 N.E. COR. FIVE POINTS & SEVEN MILE
P.L.B.M. 123-250 N.W. COR. GRANDVIEW & SEVEN MILE
ARR. ON HYD. S.E. COR. LENORE & GRAND RIVER

TREE REMOVAL

NO	SIZE	KIND	STA.	LOCATION
3	7"	-	1+96	103'E. OF W.P.L.
1	4"	ELM	5+65	147'E. OF W.P.L.
1	14"	ELM	7+86	132'E. OF W.P.L.

CURVE DATA

Δ = 120°09' ✓ Δ = 59°21' ✓
R = 20' ✓ R = 20' ✓
T = 34.75' ✓ T = 11.51' ✓
A = 41.94' ✓ A = 20.72' ✓
S = 275.60' ✓ S = 23.00' ✓

