

200 120 511
 200 120 511
 200 120 511

Final Estimate to Assessors 1/14/47

SMALL	NOTE
C-287	Change Grade 5th 34-43-5133 Specific At Existing Catch Basin adjusted 1/4/47
C-288	
C-289	
C-290	
C-291	
C-292	
C-293	
C-294	
C-295	
C-296	
C-297	

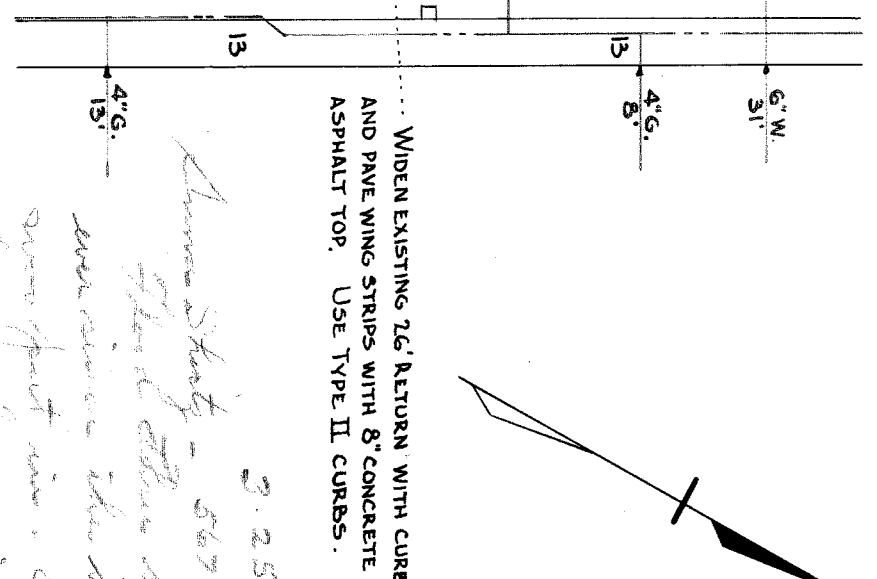
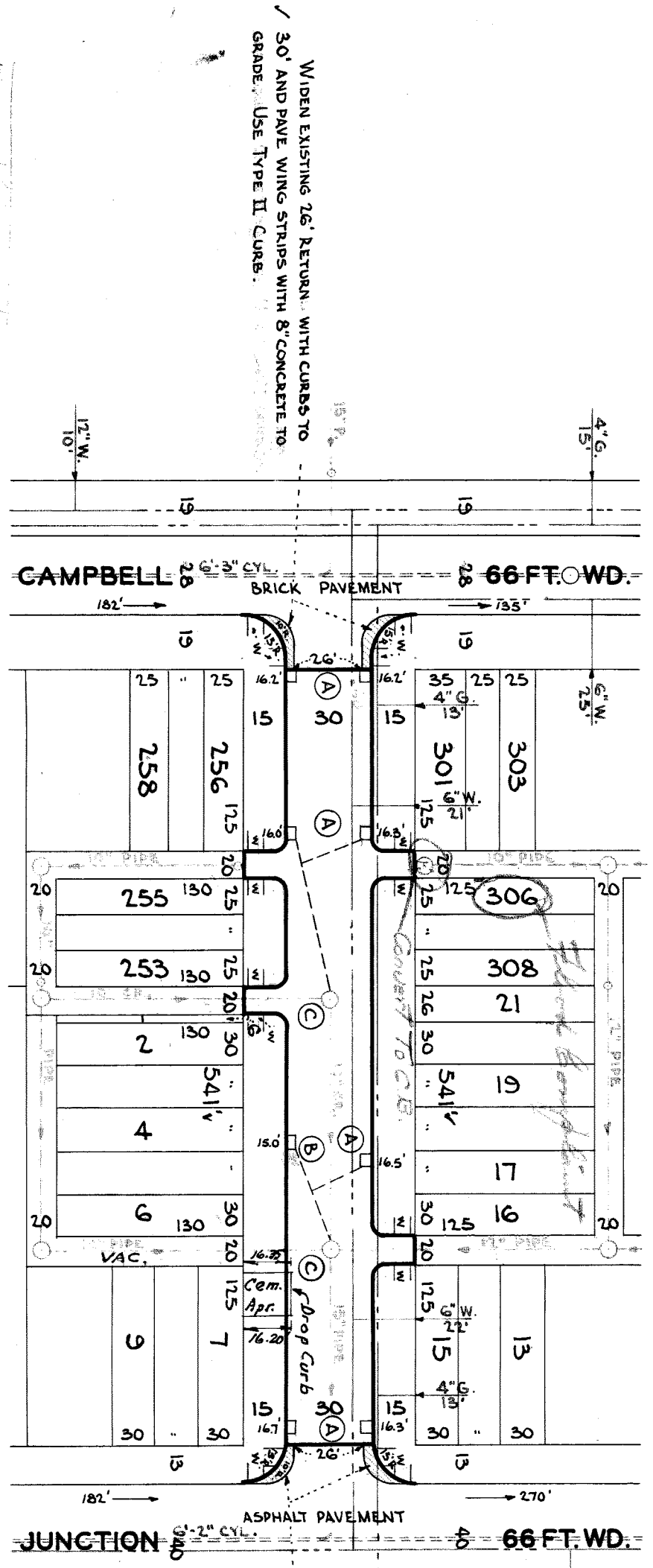
NOTE:
 BEFORE STARTING CONSTRUCTION CONTRACTOR MUST CHECK WITH UTILITIES FOR LOCATION OF EXISTING STRUCTURES WHETHER OR NOT INDICATED ON PLANS.
 PLAN SCALE DISTORTED
 LOTS & ALLEYS 1" = 100'
 STREET WIDTHS 1" = 50'
 DRAINAGE COMPLETED 3-C-47 (exists)
 PAVING COMPLETED 12-31-46

QUANTITIES	ESTIMATED	FINAL
EXCAVATION CU YDS	564	133
NEW CURB LIN FT	98	0
PAVING SQ YDS	1726	307
SIDEWALK SQ FT	576	510
MANHOLES	2	2
ADJUST CONSTRUCT	1	8
SEWER 12" LIN FT	1	0
SEWER 18" LIN FT	0	0

LOT	AREA	VAL	VAL	VAL	VAL
1535	664	133	0	501.00	40.00
1726	307	307	510	501.00	40.00
576	510	510	510	501.00	40.00
2	2	2	2	501.00	40.00
1	1	1	1	501.00	40.00
8	8	8	8	501.00	40.00
0	0	0	0	501.00	40.00

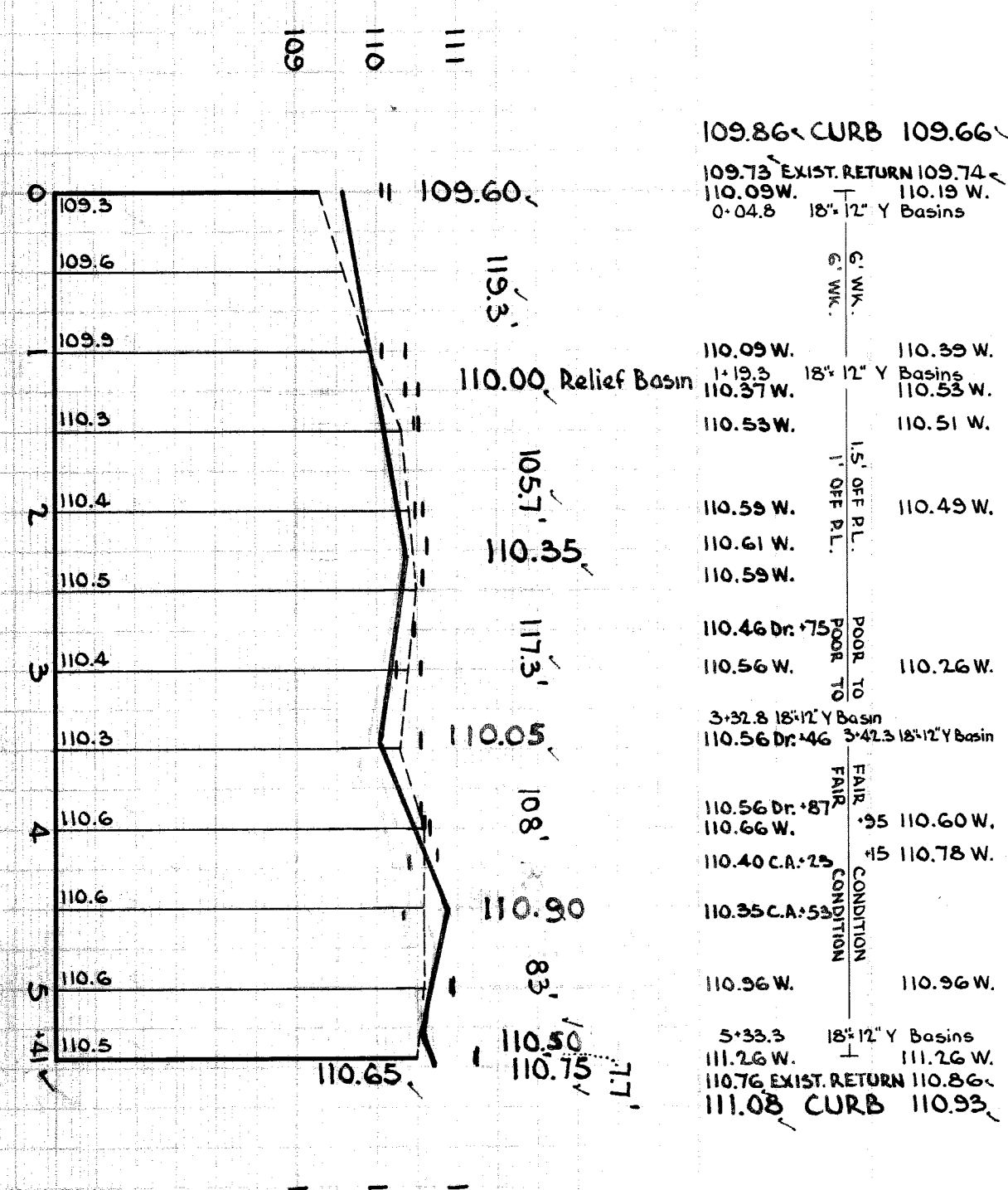
DESIGNED BY: SPROWSKI
 DRAWN BY: P. MATSUMURA
 CHECKED BY: S. REOM
 APPROVED BY: J. J. [Signature]
 ASSISTANT CITY ENGINEER: M. R. [Signature]

DEPARTMENT OF PUBLIC WORKS
 CITY ENGINEERS OFFICE - DIVISION OF PAVING DESIGN
 STREET PAVING PLAN
 LAUDERDALE
 E.P.L. OF CAMPBELL
 W.P.L. OF JUNCTION
 A.P. 154-21
 1462
 30'



WIDEN EXISTING 26' RETURN WITH CURBS TO 30' AND PAVE WING STRIPS WITH 8\"/>

NOTE:
 At 1 Adjust tops of 7' existing 18\"/>



WIDEN EXISTING 26' RETURN WITH CURBS TO 30' AND PAVE WING STRIPS WITH 8\"/>

NOTE:
 At 1 Adjust tops of 7' existing 18\"/>

