

NAME OF STREET: **LAPPIN AVE.**
 FROM: **E.P.L. OF REDMOND AVE.**
 TO: **88 FT. E. OF W.L. OF KELLY RD.**

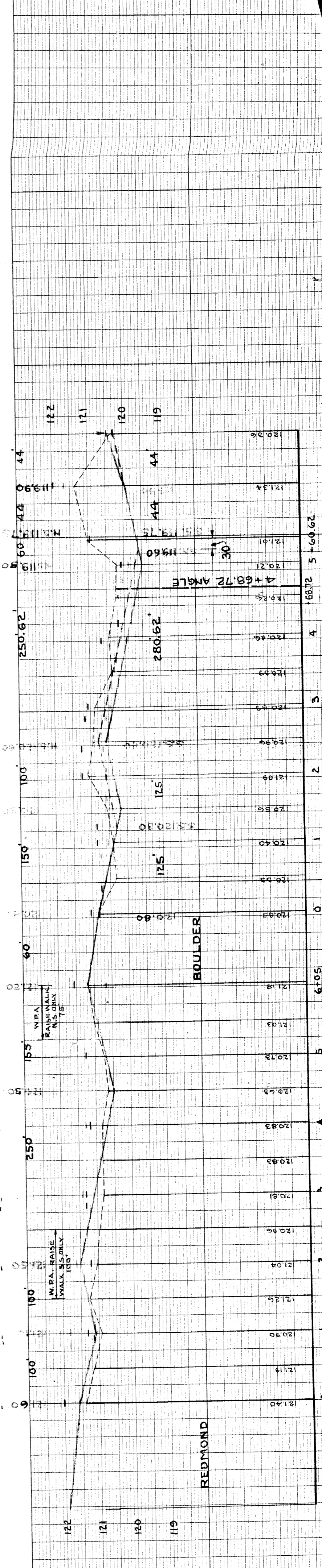
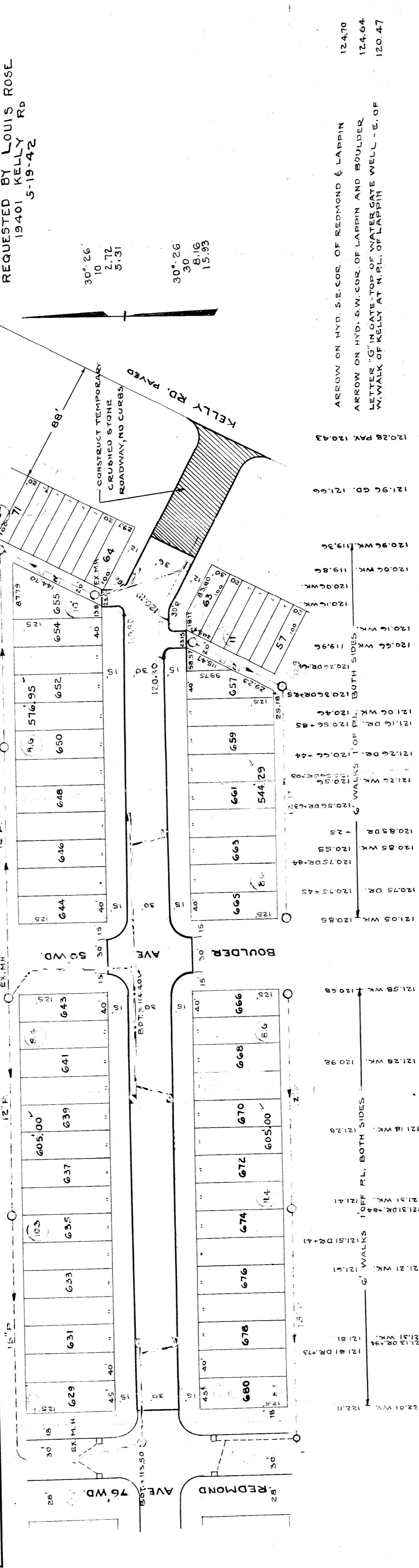
TYPE OF PAVEMENT: _____
 WIDTH: **30' & 36'**

F.H.A. PRIVATE
 REQUESTED BY **LOUIS ROSE**
19401 KELLY RD
5-19-42

DESIGNED BY <i>L. Labrousse</i>	BOOK 540 PAGE 61	DATE P.B. 6-25-42	MAP T. 28-42
DRAWN BY <i>L. Labrousse</i>	CHECKED S.S.	PROFILE S.S.	GRADE S.S.
TRACED BY	COMPUTED S.S.	CHECKED S.S.	
CHECKED BY	LENGTH 1142.47	LENGTH 161.15	CITY
APPROVED	LENGTH 1303.62	LENGTH 1303.62	CITY
ENGINEER OF STREETS	COST ADVERTISING BLANKS		
<i>A. A. ...</i>	CITY INSPECTION		
<i>A. A. ...</i>	CITY		

SEWER INDEXED	REVISIONS	PROGRESS	DATE	START	FINISH

JOB NO.	BLUE PRINT ISSUED FOR	GRADE ONLY	CATCH BASINS	PAVING CLASS	DEPT. OF WATER SUPPLY	GAS CO.



INDEX TOPO NO. **38 95**
 RECORD NO. _____

ARROW ON HYD. S.E. COR. OF REDMOND & LAPPIN 124.70
 ARROW ON HYD. S.W. COR. OF LAPPIN AND BOULDER 124.64
 LETTER "G" IN GATE-TOP OF WATERGATE WELL - E. OF N. WALK OF KELLY AT N.P.L. OF LAPPIN 120.47

122
121
120
119