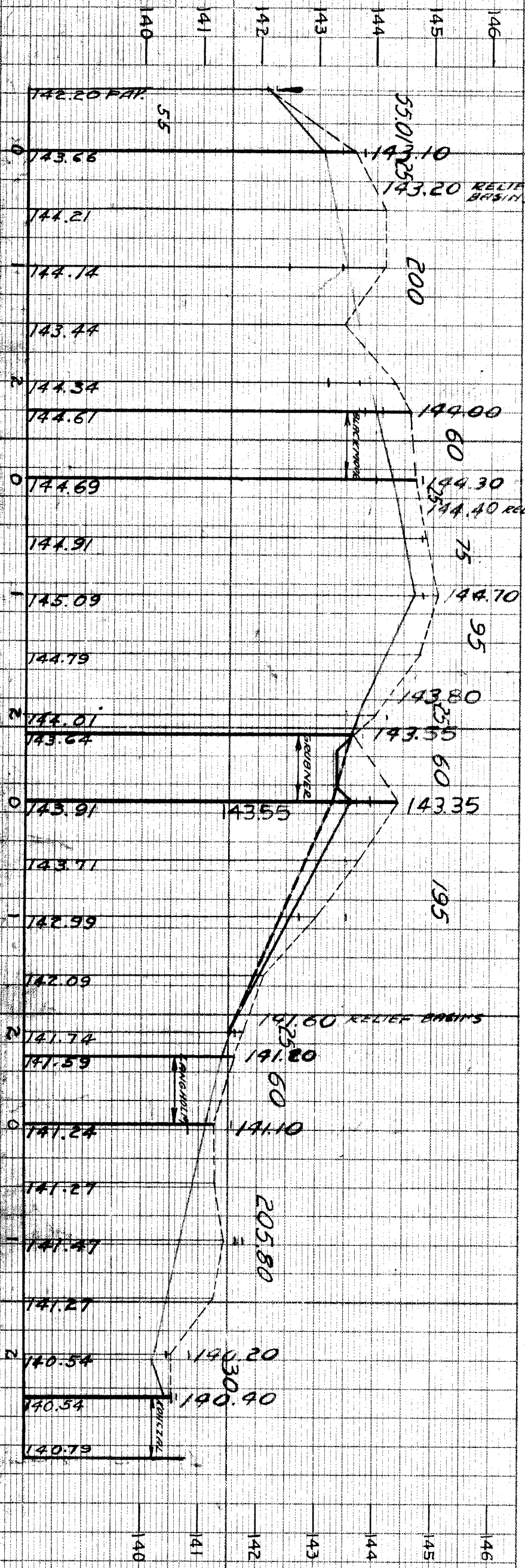
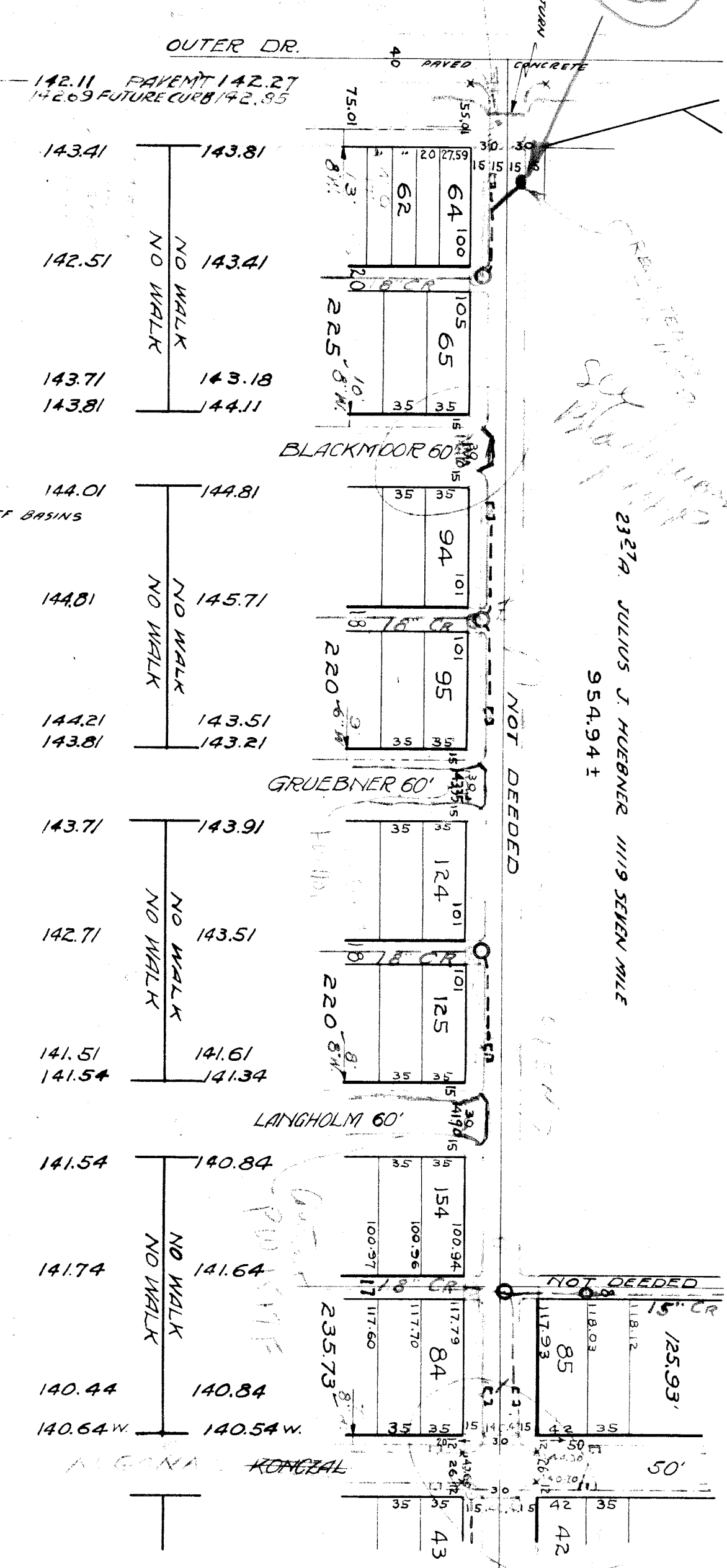


202

SEWER INDEXED 7.1.14	JOB NO. 0-1102	PROGRESS START FINISH	QUANTITIES	LOTS	CITY	LOTS	CITY	SCALE: 1" = 100'	DATE: 1440 PAGE 17	DESIGNED BY: M. J. M. M. M.
BLUP PRINT ISSUED FOR:	GRADE ONLY	EXCAVATION	STRAIGHT CURB NEW					PLAN CHECKED: MEM	PROFILE CHECKED: MEM	COMPUTED: MEM
REVISIONS:	CATCH BASINS	OLD CURB RESET	CIRCULAR CURB					LOT 21: 4112491	LOT 22: 53502	LOT 23: 464751
	PAVING CLASS:	CONCRETE BASE	CONCRETE BASE					CITY 21: 205624	CITY 22: 26751	CITY 23: 232375
	DEPT. OF WATER SUPPLY							TOTAL 21: 464751	TOTAL 22: 232375	TOTAL 23: 232375
	GAS CO.									

Handwritten: This from my 205 17th Nov 20



CARD NO.	DEPARTMENT OF PUBLIC WORKS DETROIT
CITY ENGINEER'S OFFICE	DIVISION OF PAVING DESIGN
STREET PAVING PLAN	
NAME OF STREET: LAPPIN AVE. 60 FT. WD.	
FROM: OUTER DRIVE	TO: HOOVER
RECORD NO. 2093	INDEX TOPO NO. 2
	SHEET NO. 1

EXISTING POOLS & BASINS
NEW

BENCH MARKS

REC. B.M. *93.301, E.S. CONNER 100' N. OF GT. RR.
 + ON SEND TOP STEP OF WALK, F.M. SIBLEY L. CO. ENTRANCE
 C.B.M. *1, ARROW ON HYD. S.W. COR. LANGHOLM 143.419
 C.B.M. *2, SPK. IN N.S. OF POLE ON S.E. COR. LAPPIN & LANGHOLM 144.65
 C.B.M. *3, ARROW ON HYD. S.W. COR. LAPPIN & TEPPERT 143.60
 C.B.M. *4, SPK. S.S. OF POLE, E.S. ALLEY, 20' N. OF LAPPIN, ALLEY 146.17
 W. OF HOOVER 147.755

By Fox of D.P.W. 12-4-50

Y-BASINS BY W.B.G. 4-13-40-M.L.

Handwritten: Approved by W.B.G. 4-13-40-M.L.