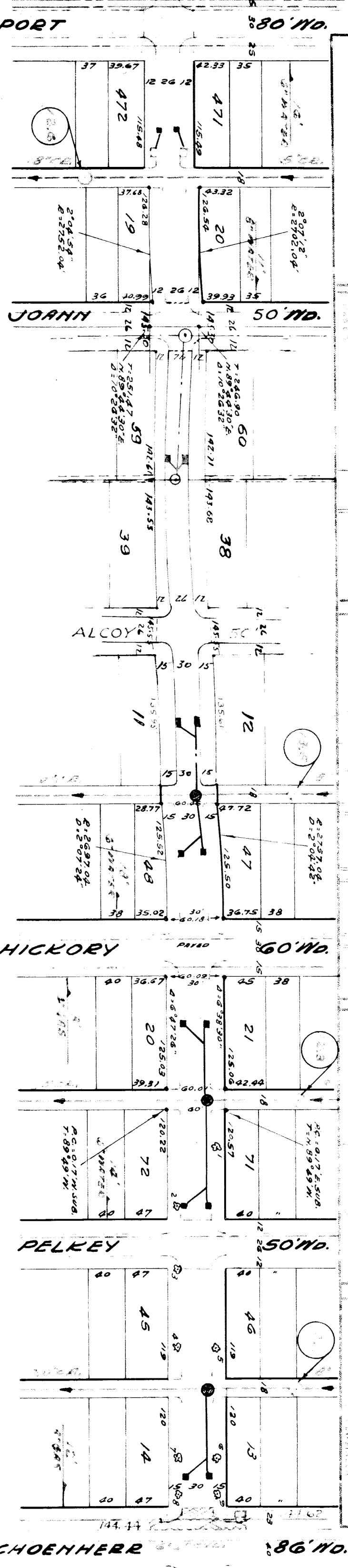


144.78M	145.08M	144.78M	145.08M
144.68	144.98	144.68	144.98
144.78	144.98	144.78	144.98
145.28	145.08	145.28	145.08
145.28	145.28	145.28	145.28
145.58M	145.28M	145.58M	145.28M
145.38M	145.48M	145.38M	145.48M
145.28M	145.18M	145.28M	145.18M
145.48M	145.28M	145.48M	145.28M
145.58M	145.38M	145.58M	145.38M
145.58M	145.38M	145.58M	145.38M
145.78M	145.98M	145.78M	145.98M
145.38M	145.68M	145.38M	145.68M
145.38	145.58	145.38	145.58
145.58M	145.58M	145.58M	145.58M
145.18M	145.38M	145.18M	145.38M
145.18M	145.10	145.18M	145.10
145.28M	145.28M	145.28M	145.28M
145.68	145.48	145.68	145.48
145.58	145.68	145.58	145.68
145.58	145.68	145.58	145.68
145.38	145.38	145.38	145.38
145.28M	145.18M	145.28M	145.18M
145.38M	144.98M	145.38M	144.98M
144.68	144.58	144.68	144.58
144.58	144.48	144.58	144.48
144.58	144.48	144.58	144.48
144.48	144.48	144.48	144.48
144.28	144.08	144.28	144.08
144.18M	143.98M	144.18M	143.98M
144.28	144.28	144.28	144.28
144.18M	143.98M	144.18M	143.98M
144.18M	144.28	144.18M	144.28
144.18M	144.37	144.18M	144.37



SEWER	City of Detroit
HOBBED	
DATE	
JOB NO.	
BLUE PRINT ISSUED FOR	
GRADE ONLY	
CATCH BASINS	
REVISIONS: 8/14/94 Grade Revision	
PAVING LEASE	
QUANTITIES	
EXCAVATION	
STRAIGHT CURB NEW	
OLD CURB RESET	
CIRCULAR CURB	
PAVING	
CONCRETE	
DESIGNED BY	M. J. Lappin
DRAWN BY	M. J. Lappin
TRACED BY	E. J. Lappin
CHECKED BY	
DATE	6-11-40
SCALE	1" = 100'
PROJECT	EM
PROPOSED	EM
ENGINEER	M. J. Lappin
CITY	DETROIT
LOT	20
SECTION	93

EXISTING POOLS & BASINS  
NEW

SPR. 7" ELM W.S. JOANN 15'S LAPPIN 145.98  
 SPR. TEL. POLE N.S. LAPPIN W.S. ALLEY W. HICKORY 146.24  
 " 6" ELM S.S. LAPPIN 15' W. SCHOENHERR 144.41

NOTE

NO. 1 AT 1+83 = 4" ELM 21' 6"	NO. 5 AT 0+86 = 6" ELM 20' 0"
" 2 " 2+50 = 4" " 21' 6"	" 6 " 3+07 = 6" " "
" 3 " 0+00 = 6" " 20' 0"	" 7 " 2+07 = 6" " "
" 4 " 0+86 = 6" " "	" 8 " 2+44 = 6" " "
NO. 9 AT 2+44 = 6" ELM 19' 7" E	

DEPARTMENT OF PUBLIC WORKS  
 CITY ENGINEER'S OFFICE - DIVISION OF PAVING DESIGN  
 STREET PAVING PLAN  
 LAPPIN 50' & 60'  
 HOOPER AVE.  
 SCHOENHERR RD.  
 20 93  
 94  
 NAME OF STREET  
 HOOPER AVE.  
 FROM  
 SCHOENHERR RD.  
 TO  
 SCHOENHERR RD.  
 SHEET NO.  
 31  
 NUMBER OF SHEETS  
 31