

DEPARTMENT OF PUBLIC WORKS
CITY ENGINEER'S OFFICE - DIVISION OF PAVING DESIGN
STREET PAVING PLAN

CARD NO. **19 92**
 INDEX TO NO. **19 92**
 RECORD NO. **19 92**
 ASSIGNMENT NO. **AP 132-33L**
 SHEET 1 OF 1 SHEETS
 WIDTH **26**

NAME OF STREET **LANTZ**
 FROM **E.P.L. OF DWYER**
 TO **W.P.L. OF MT. ELLIOTT**
 TYPE OF PAVEMENT **8" C-1 ONE COURSE CONCRETE SLAB & CURB INTEGRAL**

DESIGNED BY **S. S. HENDERSON**
 DRAWN BY **C. HENDERSON**
 TRACED BY
 CHECKED BY **Seaton**
 APPROVED
 ENGINEER OF STREETS
 ASSIST. CITY ENGINEER

BOOK **1576** PAGE **33**
 DATE **OCT. 1945**
 PLAN **C.L.H.** PROFILE **C.L.H.** COMPUTED **S.S.** CHECKED
 LOT 21 **1 004 32** CITY **502 16**
 LOT 22 **76 00** CITY **38 00**
 TOTAL **1 080 32** CITY **540 16**

NOTE:
 BEFORE STARTING CONSTRUCTION CONTRACTOR MUST CHECK WITH UTILITIES FOR LOCATIONS OF EXISTING STRUCTURES WHETHER OR NOT INDICATED ON PLANS.

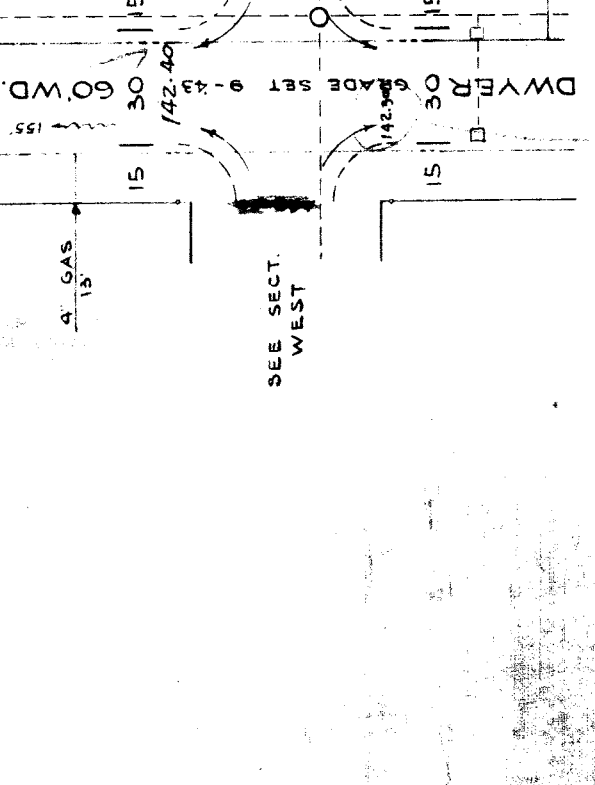
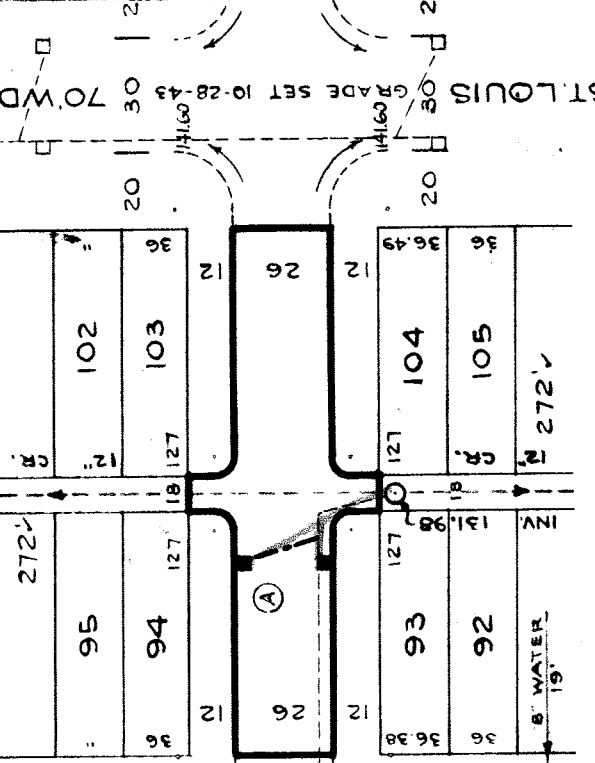
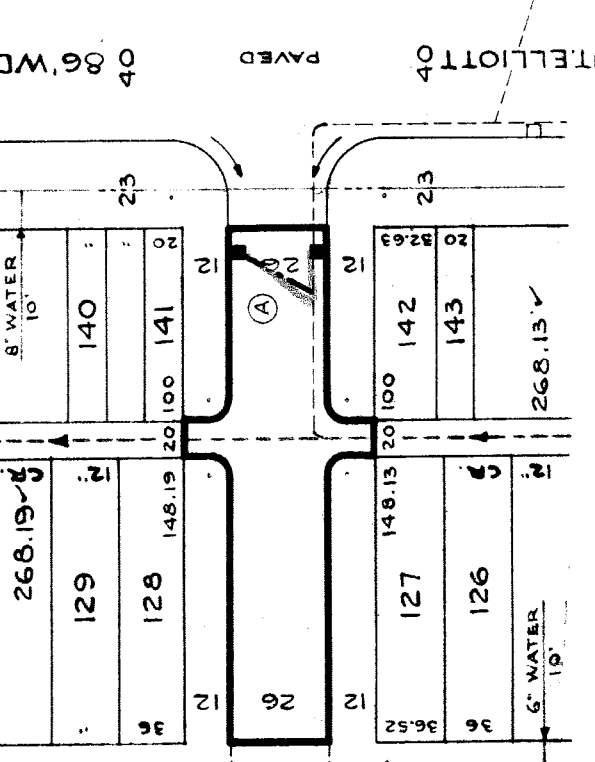
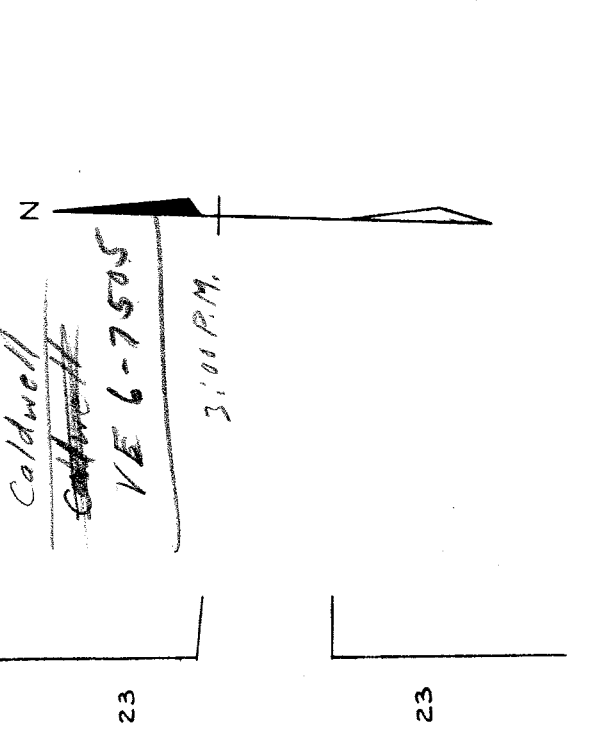
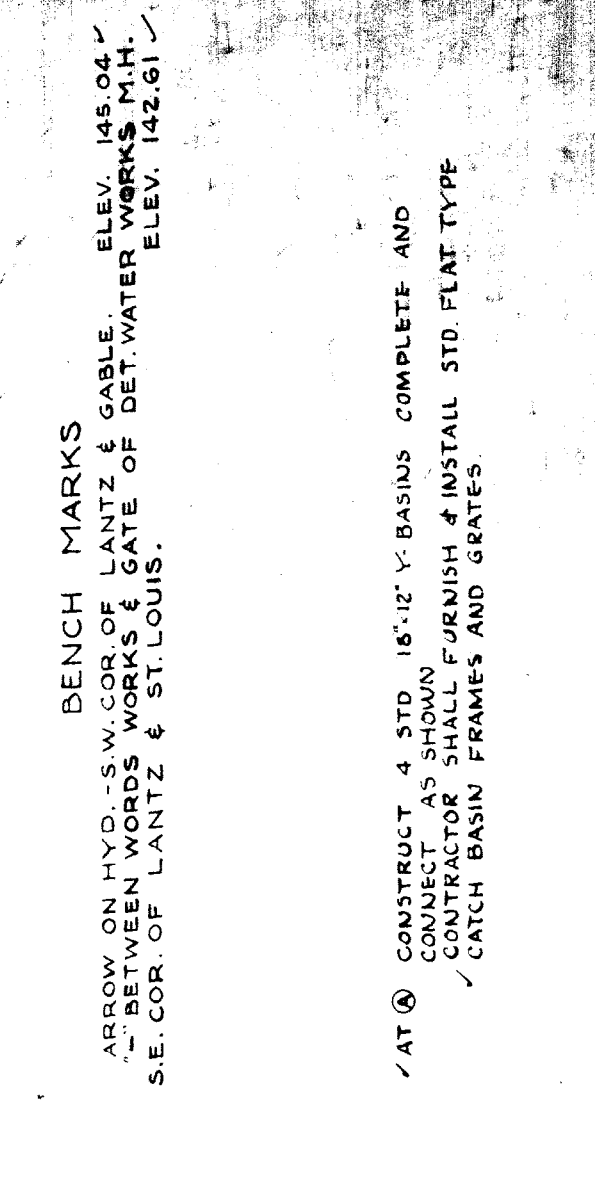
PLAN SCALE DISTORTED
 LOTS & ALLEYS **1" = 100'**
 STREET WIDTHS **1" = 50'**

DRAINAGE COMPLETED
PAVING COMPLETED

QUANTITIES	ESTIMATED	FINAL
EXCAVATION CU. YDS.	LOTS	CITY
NEW CURB	654	112
PAVING SQ. YDS.	1 507	219
SIDEWALK		288
MANHOLES		
ADJUST CONSTRUCT		
BASEINS	3	1
SEWERS 12" LIN. FT.	44	6
SEWERS 18" LIN. FT.		

QUANTITIES	ESTIMATED	FINAL
EXCAVATION CU. YDS.	LOTS	CITY
NEW CURB	654	112
PAVING SQ. YDS.	1 507	219
SIDEWALK		288
MANHOLES		
ADJUST CONSTRUCT		
BASEINS	3	1
SEWERS 12" LIN. FT.	44	6
SEWERS 18" LIN. FT.		

QUANTITIES	ESTIMATED	FINAL
EXCAVATION CU. YDS.	LOTS	CITY
NEW CURB	654	112
PAVING SQ. YDS.	1 507	219
SIDEWALK		288
MANHOLES		
ADJUST CONSTRUCT		
BASEINS	3	1
SEWERS 12" LIN. FT.	44	6
SEWERS 18" LIN. FT.		



ARROW ON HYD. S.W. COR. OF LANTZ & GABLE. ELEV. 145.04'
 BETWEEN WORDS WORKS & GATE OF DET. WATER WORKS M.H.
 S.E. COR. OF LANTZ & ST. LOUIS. ELEV. 142.61'

AT ④ CONSTRUCT 4 STD. 18" x 12" V-BASINS COMPLETE AND CONNECT AS SHOWN CONTRACTOR SHALL FURNISH & INSTALL STD. FLAT TYPE CATCH BASIN FRAMES AND GRATES.

Dolson
Leban
S. Oyster

ST. LOUIS	MT. ELLIOTT
142.05	141.92
141.95	141.8
141.85	141.7
141.75	141.6
141.65	141.5
141.55	141.4
141.45	141.3
141.35	141.2
141.25	141.1
141.15	141.0
141.05	

ST. LOUIS	MT. ELLIOTT
142.05	141.92
141.95	141.8
141.85	141.7
141.75	141.6
141.65	141.5
141.55	141.4
141.45	141.3
141.35	141.2
141.25	141.1
141.15	141.0
141.05	

ST. LOUIS	MT. ELLIOTT
142.05	141.92
141.95	141.8
141.85	141.7
141.75	141.6
141.65	141.5
141.55	141.4
141.45	141.3
141.35	141.2
141.25	141.1
141.15	141.0
141.05	

ST. LOUIS	MT. ELLIOTT
142.05	141.92
141.95	141.8
141.85	141.7
141.75	141.6
141.65	141.5
141.55	141.4
141.45	141.3
141.35	141.2
141.25	141.1
141.15	141.0
141.05	