

DATE	REVISIONS
12/1/95	OLD MAP

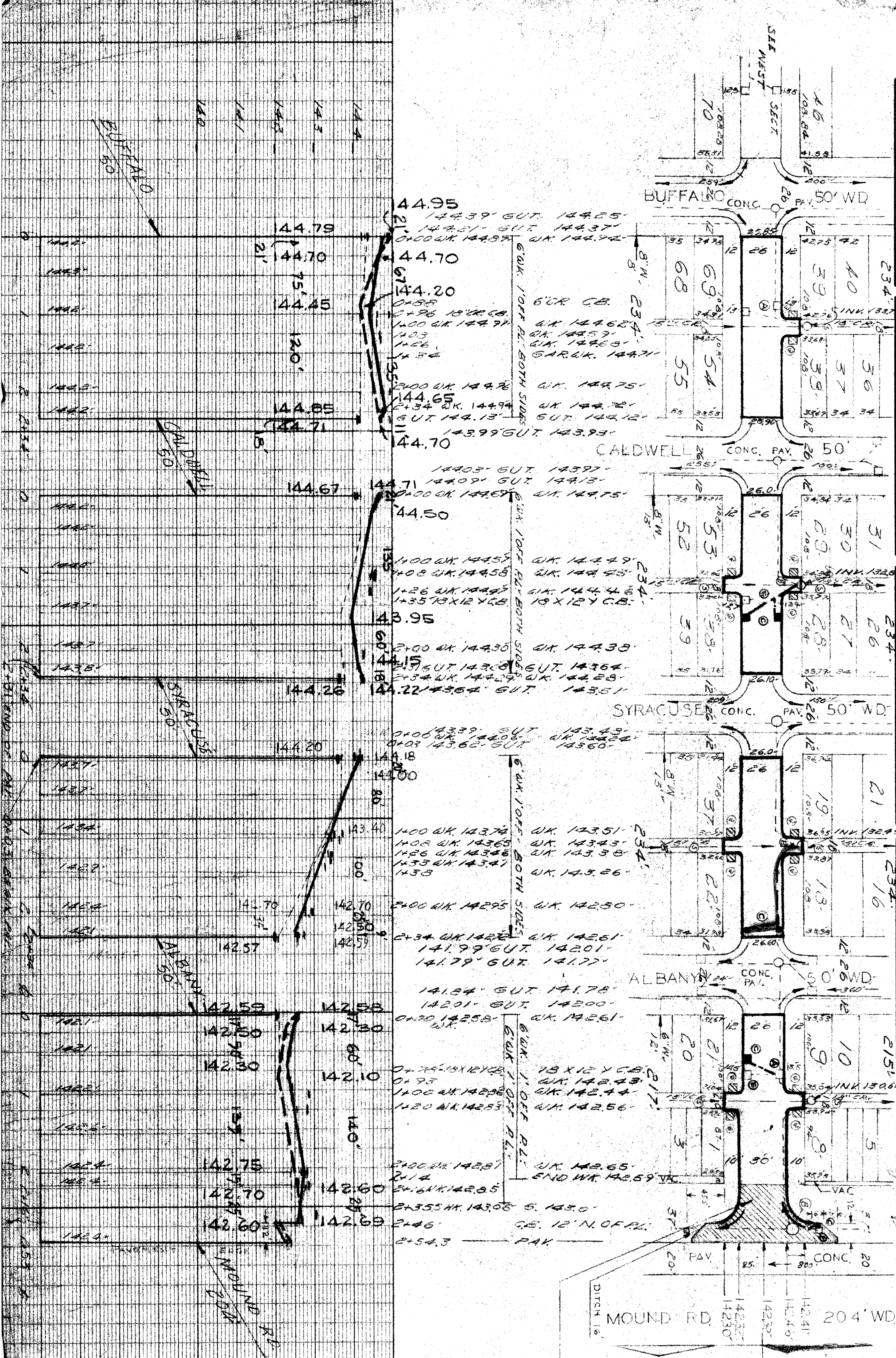
BEFORE STARTING CONSTRUCTION CONTRACTOR MUST CHECK WITH UTILITIES FOR LOCATIONS OF EXISTING STRUCTURES WHETHER OR NOT INDICATED ON PLANS.	
SCALE	1" = 100'
LOTS & ALLEYS	1" = 50'
STREET WIDTH	1" = 20'
VERTICAL	1" = 20'
DRAINAGE COMPLETED	
PAVING COMPLETED	

QUANTITIES		ESTIMATED	
EXCAVATION	CU. YDS.	LOTS	CITY
NEW CURB	LN. FT.		
PAVING	SQ. YDS.		
TEST CORES	SQ. FT.		
MANHOLES	ADJUST		
BASINS	CONSTRUCT		

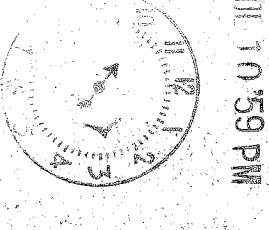
PETITION NO.	9747	PETITION DATE	7-17-56
ASSIGNMENT NO.	325-CM-25	GROUP	
BOOK NO.	1753	PG.	65
LEVEL DATE	DEC. 56		
DATE OF DRAW'G.	8-27-57		

MADE BY	BT	CHECKED BY	HRB
PROFILE	BT	GRAB	HRB
ESTIMATE	HRB	SEWER APPROVED	HRB
FINAL CHECK			

INDEX NO.	19
TPO NO.	92
INDEXED	1



20" R. TYPE II CURB  
& UNIFORM CONC.



CONTRACT NO. P.W. *2200*

**STREET PAVING PLAN**  
**CITY OF DETROIT**

DEPARTMENT OF PUBLIC WORKS - CITY ENGINEERS OFFICE

NAME OF STREET: **LANTZ**

FROM: **E.P.L. OF BUFFALO**

TO: **37' E. OF W.P.L. OF MOUND**

TYPE OF PAYMENT: **B & B ONE COURSE CONCRETE- INTEGRAL CURB**

UNIFORM AT STREET INTERSECTION EXCEPT AS NOTED

PET NO: **9747** F. KURZAWSKI

DATE: **7-17-56**

NOTE: FOR SYMBOLS (A) ETC. SEE STD. DET. C-327

PLBN. # 92-2514 SE. COR. ADJ. PART N. OUTER DR. 144.709

CEM. ARO. ON HYD. SE. COR. LANTZ SYRACUSE 147.58

CEM. ARO. ON HYD. N.S. LANTZ & MOUND RD. 143.56

PLBN. # 92-254 SE. COR. MOUND & OUTER DR. 143.403

