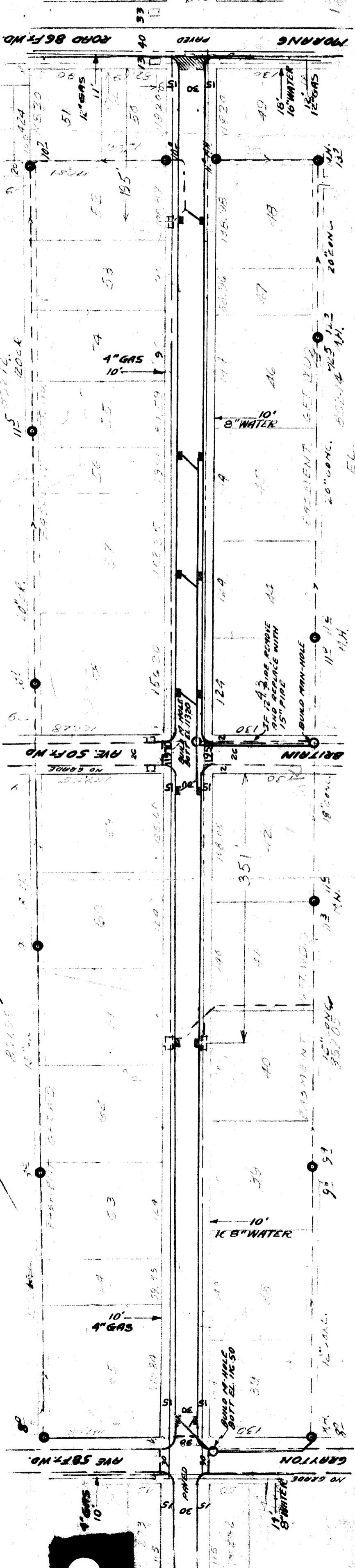


C-4153

Sewers O.K. J.

LANSDOWNE AVE. 60 FT. W.D.
FROM H.L. GRAYTON TO S. PAYTON OF MURANG AVE.

B.P. FOR GRADING 10.19.38



OLD TYPE BASINS
577940

EL.
123.90'
122.63'
122.06'
120.58'
121.61'

BRITAIN
119.70
119.60
119.50
119.40
119.30
119.20
119.10
119.00
118.90
118.80
118.70
118.60
118.50
118.40
118.30
118.20
118.10
118.00
117.90
117.80
117.70
117.60
117.50
117.40
117.30
117.20
117.10
117.00
116.90
116.80
116.70
116.60
116.50
116.40
116.30
116.20
116.10
116.00
115.90
115.80
115.70
115.60
115.50
115.40
115.30
115.20
115.10
115.00
114.90
114.80
114.70
114.60
114.50
114.40
114.30
114.20
114.10
114.00
113.90
113.80
113.70
113.60
113.50
113.40
113.30
113.20
113.10
113.00
112.90
112.80
112.70
112.60
112.50

120.70
119.90
119.80
119.70
119.60
119.50
119.40
119.30
119.20
119.10
119.00
118.90
118.80
118.70
118.60
118.50
118.40
118.30
118.20
118.10
118.00
117.90
117.80
117.70
117.60
117.50
117.40
117.30
117.20
117.10
117.00
116.90
116.80
116.70
116.60
116.50
116.40
116.30
116.20
116.10
116.00
115.90
115.80
115.70
115.60
115.50
115.40
115.30
115.20
115.10
115.00
114.90
114.80
114.70
114.60
114.50
114.40
114.30
114.20
114.10
114.00
113.90
113.80
113.70
113.60
113.50
113.40
113.30
113.20
113.10
113.00
112.90
112.80
112.70
112.60
112.50

LOTS	3	408.30	1/4	1	704.15
DIVY	126	-	1/4	1	63
TOTAL	3	534.30	-	1	767.15

RUSH FOR
WM. CALLAHAN

122.25	ES 121.60	100	121.80 W.S.	121.80
122.95	100	121.80 W.S.	121.80	
123.17	ES 122.10	100	122.30 W.S.	123.17
123.82	100	122.30 W.S.	123.82	
124.00	100	122.30 W.S.	124.00	
122.90	381	122.30 W.S.	122.90	
121.30	381	122.30 W.S.	121.30	
120.72	120.80	122.30 W.S.	120.72	
120.67	ES 120.60	120.80	120.67	
121.92	120.60	120.80	121.92	
121.37	331.02	120.80	121.37	
120.47	331.02	120.80	120.47	
120.60	120.60	120.80	120.60	
120.05	ES 119.30	119.60	120.05	
119.60	ES 119.40	119.60	119.60	
119.70	ES 119.70	119.70	119.70	
119.66	ES 119.50	119.60	119.66	
119.65	100	119.60	119.65	
119.88	ES 119.90	119.80	119.88	
119.81	ES 119.70	119.80	119.81	
119.92	100	119.80	119.92	
120.43	ES 120.20	120.40	120.43	
120.61	ES 120.00	120.50	120.61	
120.53	150	120.50	120.53	
120.91	150	120.50	120.91	
121.26	ES 120.60	120.75	121.26	
121.08	151	120.75	121.08	
120.61	151	120.75	120.61	
121.21	ES 119.90	119.90	121.21	
120.78	195.13	119.90	120.78	
120.8	195.13	119.90	120.8	
121.28	120.70	119.90	121.28	