

DEPARTMENT OF PUBLIC WORKS DETROIT
CITY ENGINEER'S OFFICE - DIVISION OF PAVING DESIGN
STREET PAVING PLAN

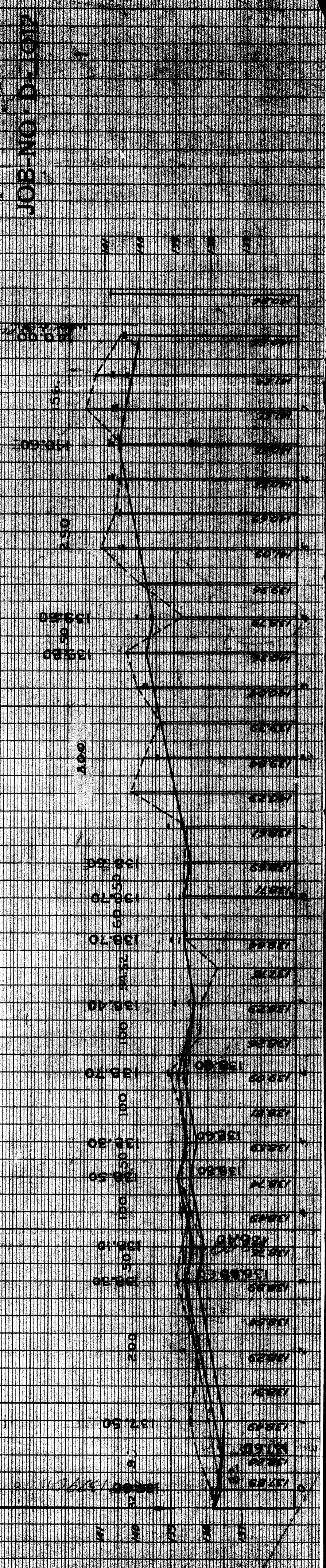
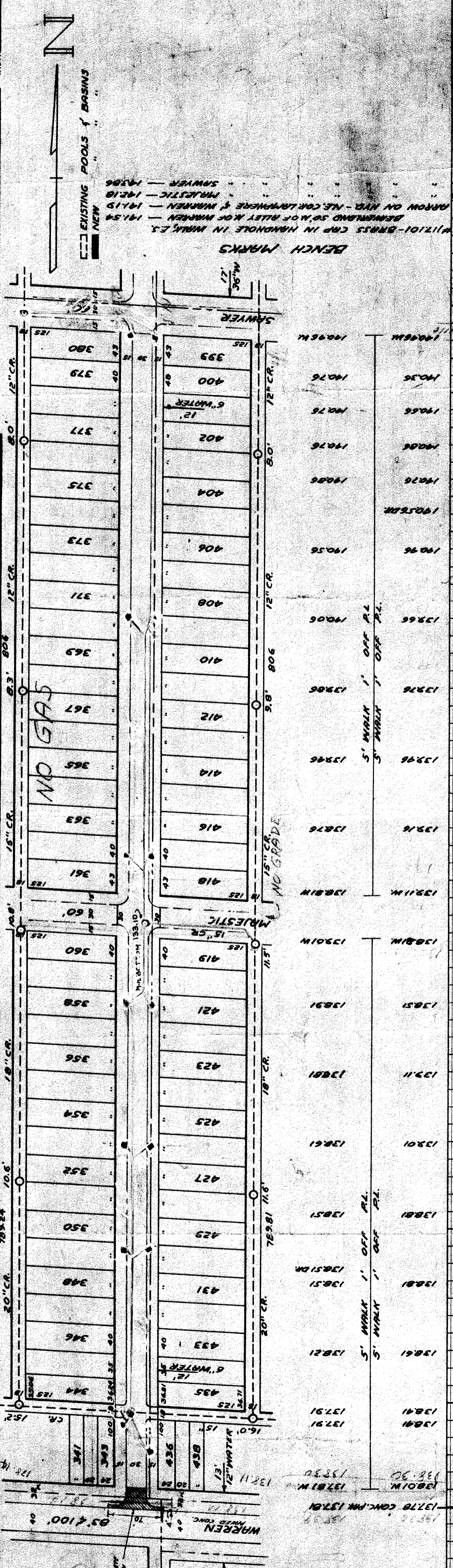
NAME OF STREET: **LAMPHERE 60'**
 FROM: **WARREN**
 TO: **SAWYER**

CARD NO.
 INDEX TOPO. NO. **78** 117
 RECORD NO.
 NUMBER OF SHEETS **1**
 SHEET NO. **1**

DESIGNED BY: *A. Madama*
 DRAWN BY: *A. Madama*
 TRACED BY: *A. Madama*
 CHECKED BY: *A. Madama*
 APPROVED: _____
 ENGINEER OF STREETS
 CITY ENGINEER

HOR. SCALE 1/2"=100'	BOOK 1289 PAGE 70
VER. SCALE 1/8"=2'	DATE 4-11-40
PLAN	PROFILE
CHECKED	GRADE
AM	AM
COMPUTED	CHECKED
LENGTH	LENGTH
1577.52	110.00
CITY	LENGTH
3	3
15.505	22.000
315.05	107.50
TOTAL	CITY
315.05	
COST ADVERTISING BLANKS	
COST INSPECTION	

QUANTITIES	LOTS	CITY
EXCAVATION		
STRAIGHT CURB NEW		
OLD CURB RESET		
CIRCULAR CURB		
PAVING		
CONCRETE BASE		
PROGRESS	DATE	FINISH
START		
BLUE PRINT ISSUED FOR:		
GRADE ONLY		
CATCH BASINS		
PAVING-CLASS.		
DEPT. OF WATER SUPPLY		
GAS CO.		



JOB NO. D-107