

44912 25/14-15/14

SENER	OLD MAP	4-11-40
REVISIONS		
SUPPLEMENTARY DETAILS		
C-327	C-586	C-739A
C-325	C-585	C-739
C-324	C-584	C-733
C-323	C-583	C-731
C-322	C-582	C-729
C-321	C-581	C-727

NOTE:
 BEFORE STARTING CONSTRUCTION CONTRACTOR MUST CHECK WITH UTILITIES FOR LOCATIONS OF EXISTING STRUCTURES WHETHER OR NOT INDICATED ON PLANS.
 PLAN SCALE DISTORTED
 LOTS & ALLEYS 1"=50'
 STREET WIDTHS 1"=50'
 DRAINAGE COMPLETED 8-29-40
 PAYING COMPLETED C.C. 11-8-49

Remove Trees 4'-12"-5'	ESTIMATED	7
QUANTITIES	LOTS	CITY
EXCAVATION CU. YDS.	3 932	608
NEW CURB II LIN. FT.	8 627	53
PAVING 8" C. 8" YDS.	262	262
8" Unif.	654	654
9" Unif.	84	84
SIDEWALK 4" SQ. FT.	1 056	1 056
MANHOLES ADJUST	100	100
RE-CONSTRUCTION	100	100
6" CONC DR	100	100
12" x 12" CONCRETE	100	100
8" x 12" CONCRETE	100	100
CATCH BASINS LIN. FT.	100	100
SEWER MAINS LIN. FT.	100	100

DESIGNED BY	EUGENE HENRY
DRAWN BY	"
TRACED BY	"
CHECKED BY	"
APPROVED BY	"
DATE DRAWN	10-27-48
DATE CHECKED	10-27-48
DATE APPROVED	10-27-48
NO. MAP	7-2-48
NO. SHEET	117
TOTAL	5 320.52
CITY	350.00
STATE	175.00
TOTAL	2 660.26

APPROVED BY
E. J. Foster
 ENGINEER OF STREETS
 CITY ENGINEER

DESIGNED BY
 EUGENE HENRY

NO. MAP
 7-2-48

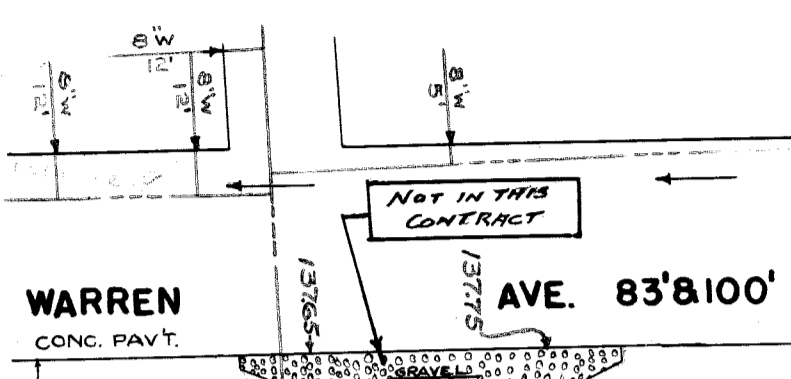
NO. SHEET
 117

TOTAL
 5 320.52

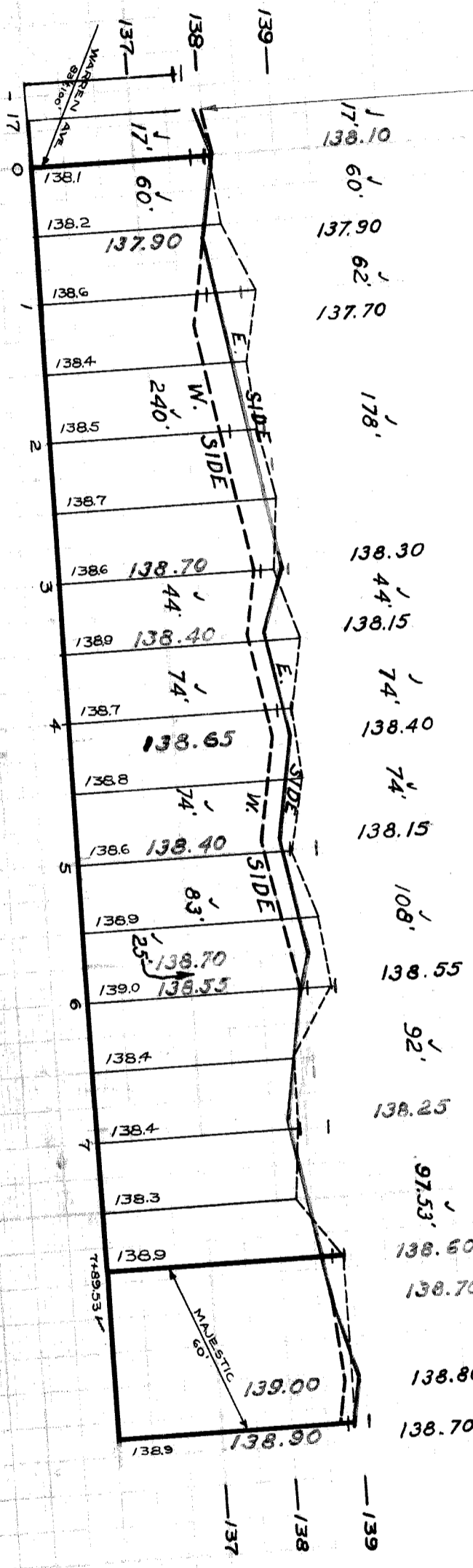
CITY
 350.00

STATE
 175.00

TOTAL
 2 660.26



137.65 PAVEMT. 137.75 PAR.
 137.90 RETURN 138.00



SMALLK BOTH SIDES 1' OFF PL. FAIR CONDITION

MAJESTIC AVE. 60'

NOTE -
 ALL CURB WITHIN STREET INTERSECTION TO BE SEPARATE TYPE II OR INTEGRAL TYPE III EXCEPT AS OTHERWISE NOTED.
 AT (W) CONSTRUCT 52" SQ. FT. OF STANDARD 4" CONCRETE WALK.
 AT (X) ADJUST TOPS OF 6 EXISTING 18" x 12" Y. BASINS WITH FLAT TYPE FRAMES & GRATES.
 AT (A) ABANDON 2 EXISTING 18" x 12" Y. BASINS. PLUG OUTLETS WITH CLASS "C" CONCRETE AND REMOVE OR FILL BASINS WITH CLASS "C" CONCRETE.
 AT (C) CONSTRUCT 1 STD. 18" x 12" Y. FLAT TYPE BASIN COMPLETE AND CONNECT TO EXISTING OUTLET AS SHOWN.
 AT (D) CONSTRUCT 1 MODIFIED 12" FLAT TYPE "L" BASIN COMPLETE WITH 1/2 TRAP AND CONNECT TO EXISTING OUTLETS AS SHOWN.
 AT (X) CONSTRUCT 36" PARTIAL RETURN WITH TYPE II CURBS 20" RAD. SLAB TO BE 9" THICK.
 DIRT ROADWAY FROM END OF PARTIAL RETURN TO COUNTY PAVEMENT IN WARREN AVENUE TO BE GRADED AND STONED 6" DEEP UNIFORMLY.
 ADJUST TOPS OF 2 WATER MONHOLES.
 BACKFILL SEWER PIPE TRENCHES UNDER PROPOSED PAVEMENT WITH APPROVED SAND-GRAVEL MATERIAL, OTHERWISE FILL & TAMP WITH APPROVED SAND LAYERS AS REQUIRED.
 EARTH LAYERS AS REQUIRED.
 DIRT ROADWAYS AT ENDS OF PAVEMENT SHALL BE GRADED BACK & STONED 6" DEEP UNIFORMLY, FOR A DISTANCE OF 10 FT. TO MEET EXISTING GRADES & C.V. YDS. IS INCLUDED UNDER EXCAVATION TOTALS FOR COST.
 CONTRACTOR SHALL FURNISH ALL NECESSARY MATERIALS, INCLUDING CASTINGS AND SHALL HAVE ALL SALVAGEABLE MATERIALS TO D.P.W. YARD AT STATE FAIR & JOHN R. STS.
 ADJUST TOPS OF 2 SEWER MONHOLES.
 RECONSTRUCT CONE OF 1 SEWER MONHOLE.

BENCH MARKS

RAMM 172620A NW CORNER OF WARREN & BRAMBLE
 RAMM 172620B SW CORNER OF WARREN & LAMPHERE NUMBER 7260
 ARROW TOP OF HYDANTNE. CORNER LAMPHERE AT HOUSE NUMBER 7260
 ON E. SIDE OF LAMPHERE AT HOUSE NUMBER 7260

ELEV. 36.827
 ELEV. 44.66
 ELEV. 44.66

DEPARTMENT OF PUBLIC WORKS
 CITY ENGINEER'S OFFICE - DIVISION OF PAVING DESIGN
STREET PAVING PLAN
LAMPHERE AVE.
 17'S. OF N.P.L. OF WARREN AVE.
 N.P.L. OF MAJESTIC AVE.

ASSIGN NO. 323 H-7
 SHEET NO. 1
 OF 3 SHEETS
 WIDTH 36'8.30'

CONTRACT NO. 172620

DATE OF AGREEMENT 5-25-48

DATE OF PAVING 5-25-48