

DATE	REVISIONS
C.315	C.328
C.324	C.329
C.324A	C.335
C.327	C.336
C.330	C.337

BEFORE STARTING CONSTRUCTION	
CONTRACTOR MUST CHECK WITH UTILITY FOR LOCATIONS OF EXISTING STRUCTURES WHETHER OR NOT INDICATED IN PLANS.	
VERTICAL	1" = 100'
STREET WIDTH	1" = 50'
PAVING COMPLETED	1-12-40
N.E. COR. ACACIA	

QUANTITIES	ESTIMATED
EXCAVATION	CU YDS
PAVING	SQ YDS
TEST COCS	NO.
MANHOLES	NO.
BASES	NO.

SECTION	DATE
1746	6-15-54

PLAT	ENGINEER
J. KING	M. S. HARRIS
N. KAWAS	M. S. HARRIS
ERICHSON	M. S. HARRIS

INDEX	NO.
75	
120	

58-B

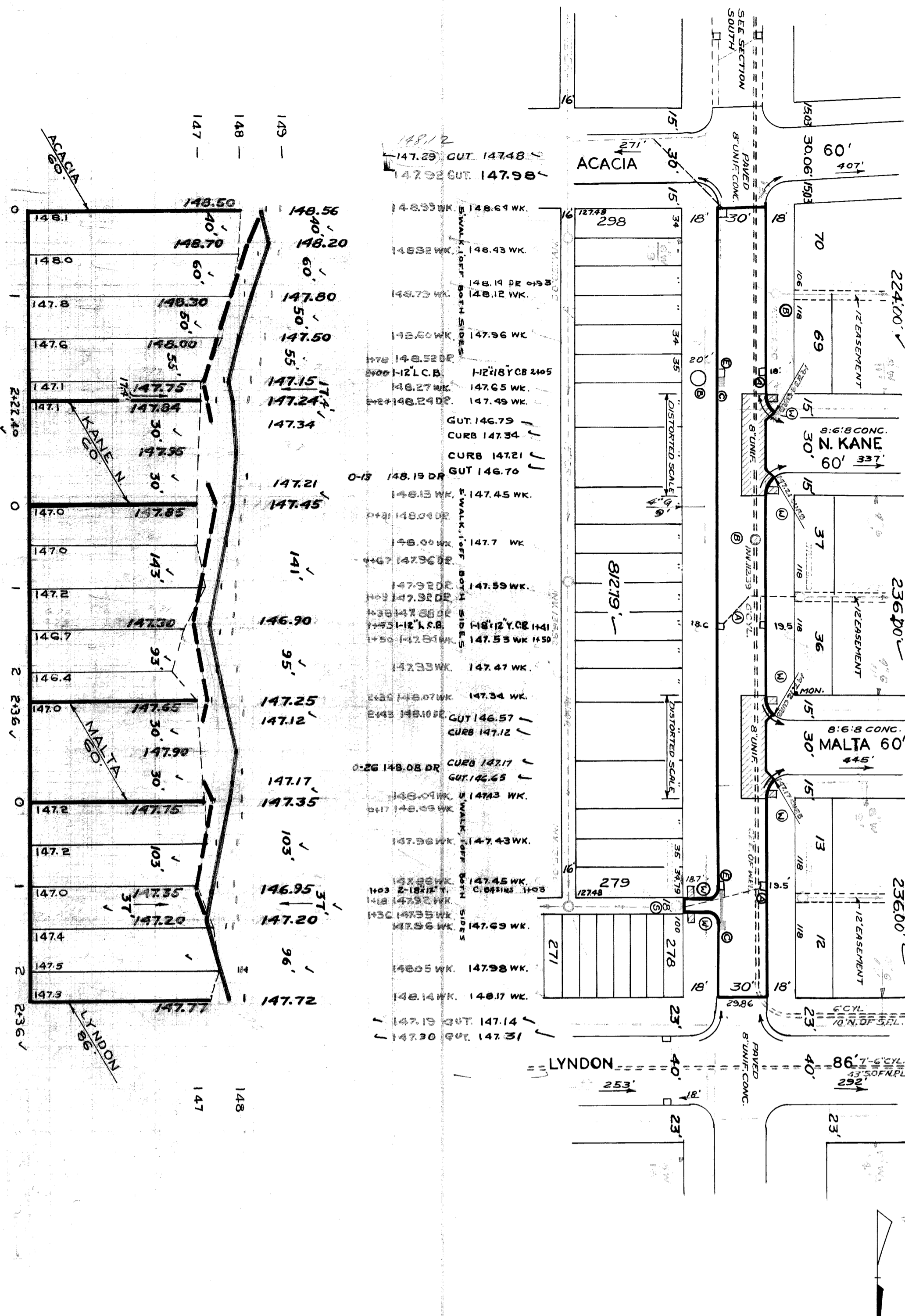
CONTRACT NO. P.W. 3448FW
STREET PAVING PLAN
CITY OF DETROIT

LAMPHERE

DEPARTMENT OF PUBLIC WORKS - CITY ENGINEERS OFFICE
N.P.L. ACACIA
S.P.L. LYNDON

FROM: N.P.L. ACACIA
TO: S.P.L. LYNDON
TYPE OF PAVEMENT 8 & 8 ONE COURSE CONCRETE-INTEGRAL CURB
UNIFORM AT STREET INTERSECTION EXCEPT AS NOTED
30" ELEV.
PETTION 1746 MARKS
6-15-54 ELEV.

SHEET	3
OF	4
SHEETS	



94709

+ IN WALK 5' OFF PROPERTY LINE & BY EXISTING RETURNS
FOR SYMBOLS A ETC. SEE STD DETAIL DRAW'G# C-327