

Sewer Approved
8/1/69

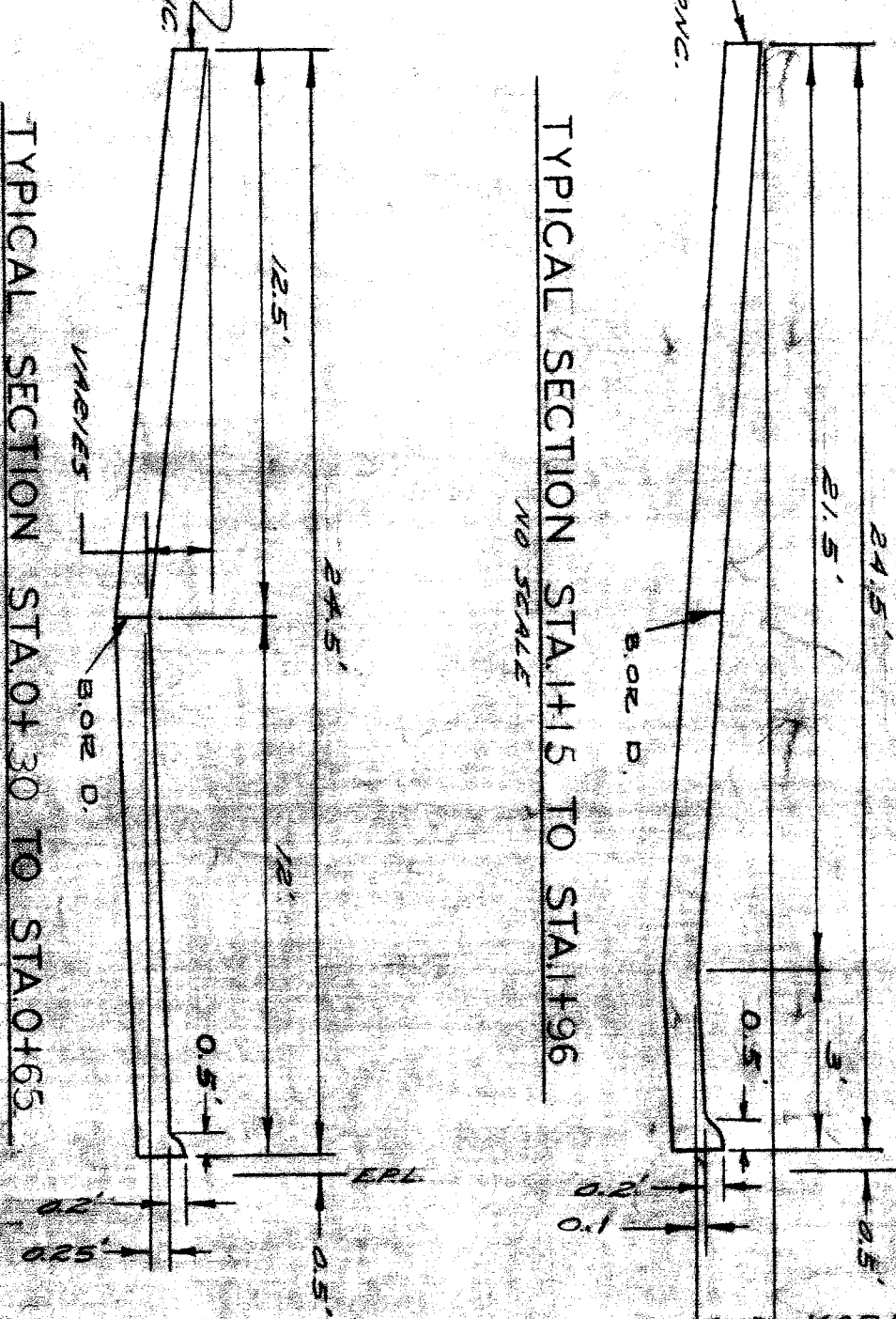
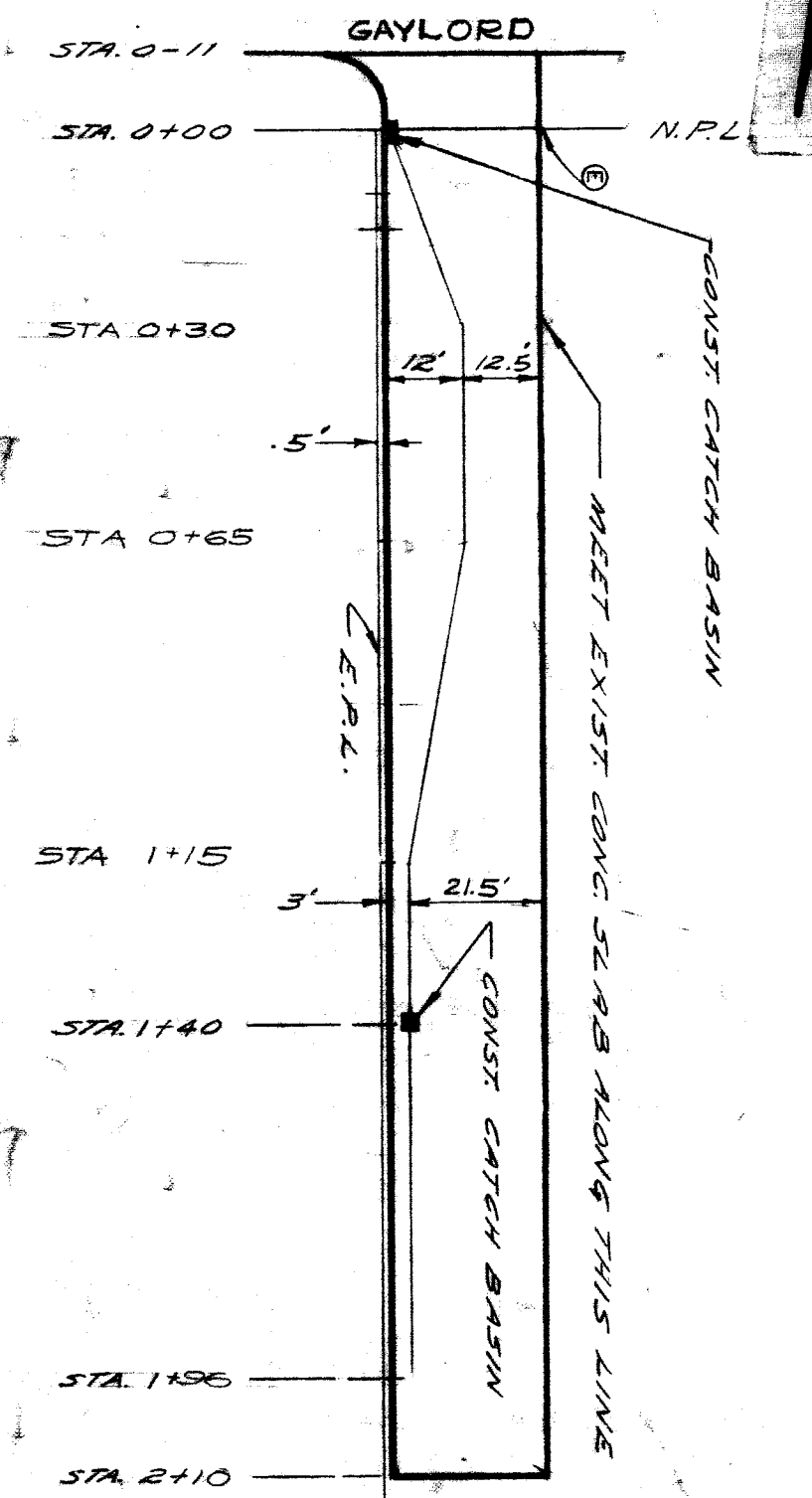
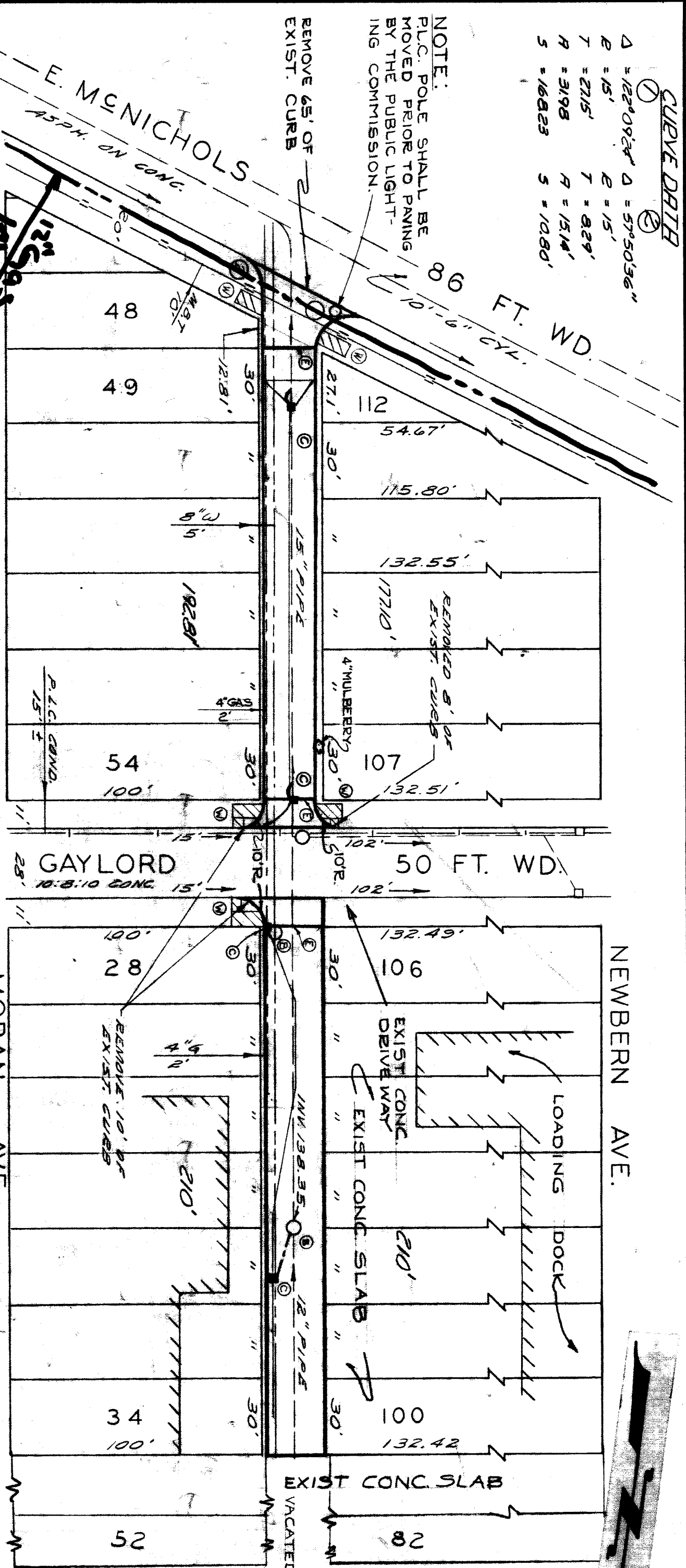
BOOK 44 (1) DATE 3-2-69

SCALE	HORIZONTAL	VERTICAL	PLANNING	CONVERTED
	1" = 40'	1" = 8'		

NOTE - FOR SYMBOLS (S) ETC. SEE STANDARD DETAIL DRAWING NO. C-1175

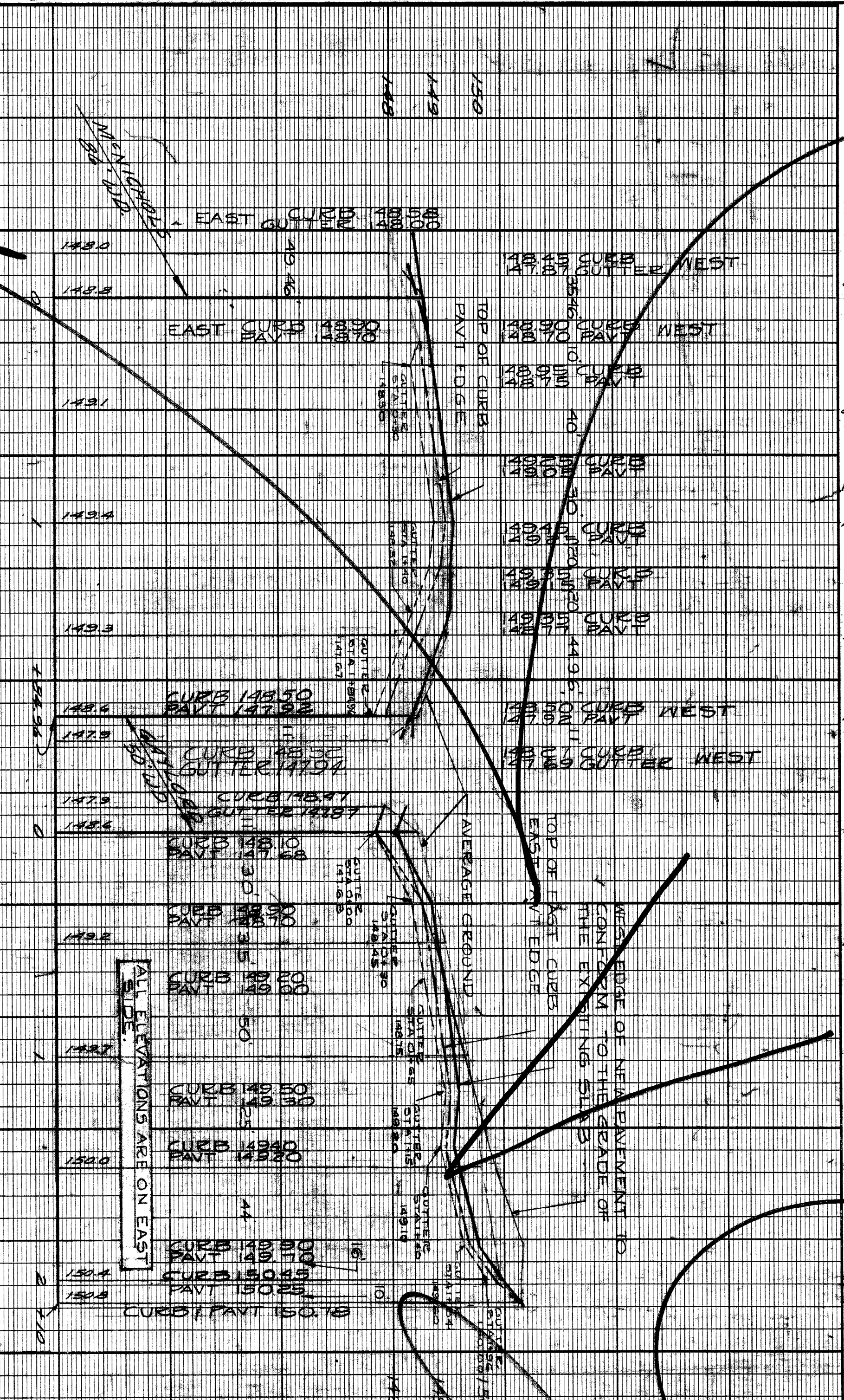
BENCH MARKS

BENCH	MARKS	ELEV.
1.5.14	45-255 N.E. COR. JACONS CAMPBELL MICHIGANS	148.937
1.5.15	45-255 N.E. COR. JACONS CAMPBELL MICHIGANS	148.937
1.5.16	45-255 N.E. COR. JACONS CAMPBELL MICHIGANS	148.937
1.5.17	45-255 N.E. COR. JACONS CAMPBELL MICHIGANS	148.937
1.5.18	45-255 N.E. COR. JACONS CAMPBELL MICHIGANS	148.937
1.5.19	45-255 N.E. COR. JACONS CAMPBELL MICHIGANS	148.937
1.5.20	45-255 N.E. COR. JACONS CAMPBELL MICHIGANS	148.937
1.5.21	45-255 N.E. COR. JACONS CAMPBELL MICHIGANS	148.937
1.5.22	45-255 N.E. COR. JACONS CAMPBELL MICHIGANS	148.937
1.5.23	45-255 N.E. COR. JACONS CAMPBELL MICHIGANS	148.937
1.5.24	45-255 N.E. COR. JACONS CAMPBELL MICHIGANS	148.937
1.5.25	45-255 N.E. COR. JACONS CAMPBELL MICHIGANS	148.937
1.5.26	45-255 N.E. COR. JACONS CAMPBELL MICHIGANS	148.937
1.5.27	45-255 N.E. COR. JACONS CAMPBELL MICHIGANS	148.937
1.5.28	45-255 N.E. COR. JACONS CAMPBELL MICHIGANS	148.937
1.5.29	45-255 N.E. COR. JACONS CAMPBELL MICHIGANS	148.937
1.5.30	45-255 N.E. COR. JACONS CAMPBELL MICHIGANS	148.937
1.5.31	45-255 N.E. COR. JACONS CAMPBELL MICHIGANS	148.937
1.5.32	45-255 N.E. COR. JACONS CAMPBELL MICHIGANS	148.937
1.5.33	45-255 N.E. COR. JACONS CAMPBELL MICHIGANS	148.937
1.5.34	45-255 N.E. COR. JACONS CAMPBELL MICHIGANS	148.937
1.5.35	45-255 N.E. COR. JACONS CAMPBELL MICHIGANS	148.937
1.5.36	45-255 N.E. COR. JACONS CAMPBELL MICHIGANS	148.937
1.5.37	45-255 N.E. COR. JACONS CAMPBELL MICHIGANS	148.937
1.5.38	45-255 N.E. COR. JACONS CAMPBELL MICHIGANS	148.937
1.5.39	45-255 N.E. COR. JACONS CAMPBELL MICHIGANS	148.937
1.5.40	45-255 N.E. COR. JACONS CAMPBELL MICHIGANS	148.937



TYPICAL SECTIONS NORTH OF GAYLORD

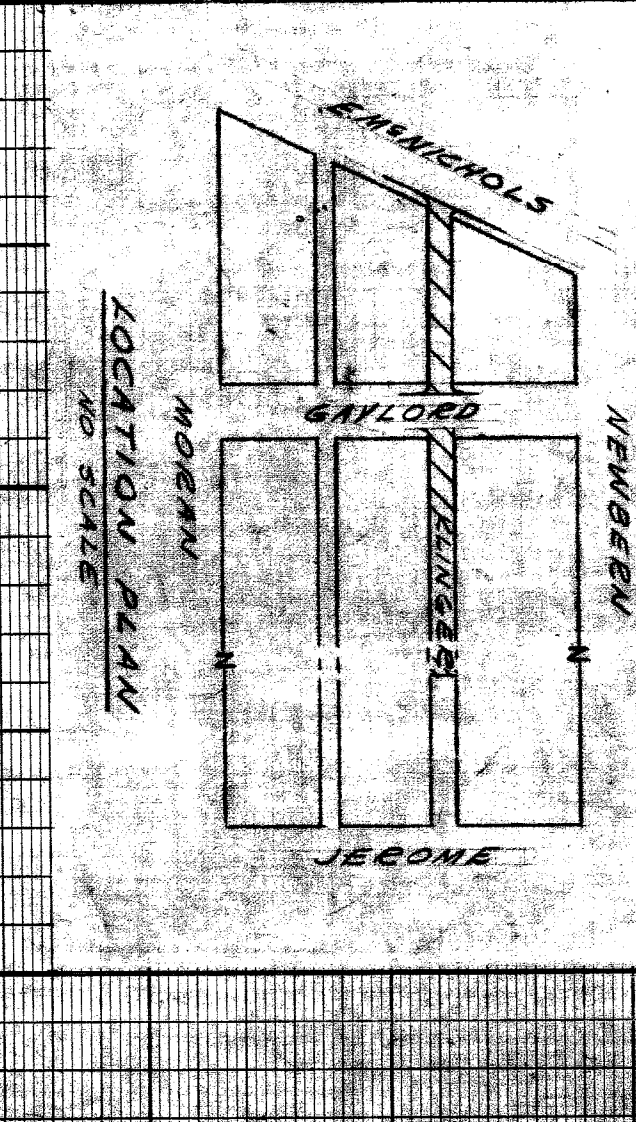
TYPICAL SECTION STA. 0+30 TO STA. 1+20
MICHIGANS TO GAYLORD



Replace with
larger pipe

NO.	ITEM	UNIT	QTY
1	EARTHWORK	CUBS	518
2	BEAM SLAB	LF	11
3	SEPARATE THE CURB ON UNDER	LF	53
4	WIRE MESH TYPE CURB ON	LF	53
5	CONCRETE CURB ON	LF	53
6	CONCRETE CURB ON	LF	53
7	CONCRETE CURB ON	LF	53
8	CONCRETE CURB ON	LF	53
9	CONCRETE CURB ON	LF	53
10	CONCRETE CURB ON	LF	53
11	CONCRETE CURB ON	LF	53
12	CONCRETE CURB ON	LF	53
13	CONCRETE CURB ON	LF	53
14	CONCRETE CURB ON	LF	53
15	CONCRETE CURB ON	LF	53
16	CONCRETE CURB ON	LF	53

NOTE - ALL PAVEMENTS TO BE 9" UNIFORM REINFORCED CONCRETE WITH REINFORCED INTEGRAL CURB. FROM GAYLORD TO 210' N. OF GAYLORD USE HIGH EARLY STRENGTH CONCRETE.



PAVING OF KLINGER FROM 2246 S. OF N.P.L. OF McNICHOLS TO 210' N. OF N.P.L. OF GAYLORD

CITY OF DETROIT DEPARTMENT OF PUBLIC WORKS CITY ENGINEERS OFFICE

PLAN GRADE ESTIMATE CHECKED BY APPROVED BY

BY: [Signature] ENGINEER OF STREETS

BY: [Signature] ASSISTANT CITY ENGINEER

BY: [Signature] CITY ENGINEER

BY: [Signature] CITY ENGINEER

BY: [Signature] CITY ENGINEER

BY: [Signature] CITY ENGINEER

BY: [Signature] CITY ENGINEER

BY: [Signature] CITY ENGINEER

BY: [Signature] CITY ENGINEER

BY: [Signature] CITY ENGINEER

BY: [Signature] CITY ENGINEER

BY: [Signature] CITY ENGINEER

BY: [Signature] CITY ENGINEER

BY: [Signature] CITY ENGINEER

BY: [Signature] CITY ENGINEER