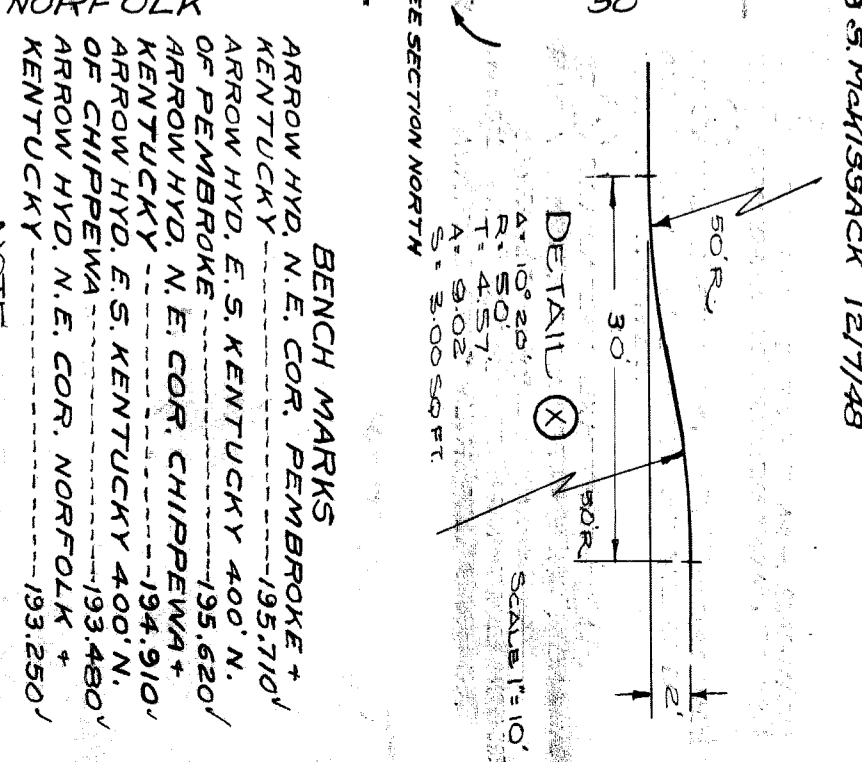
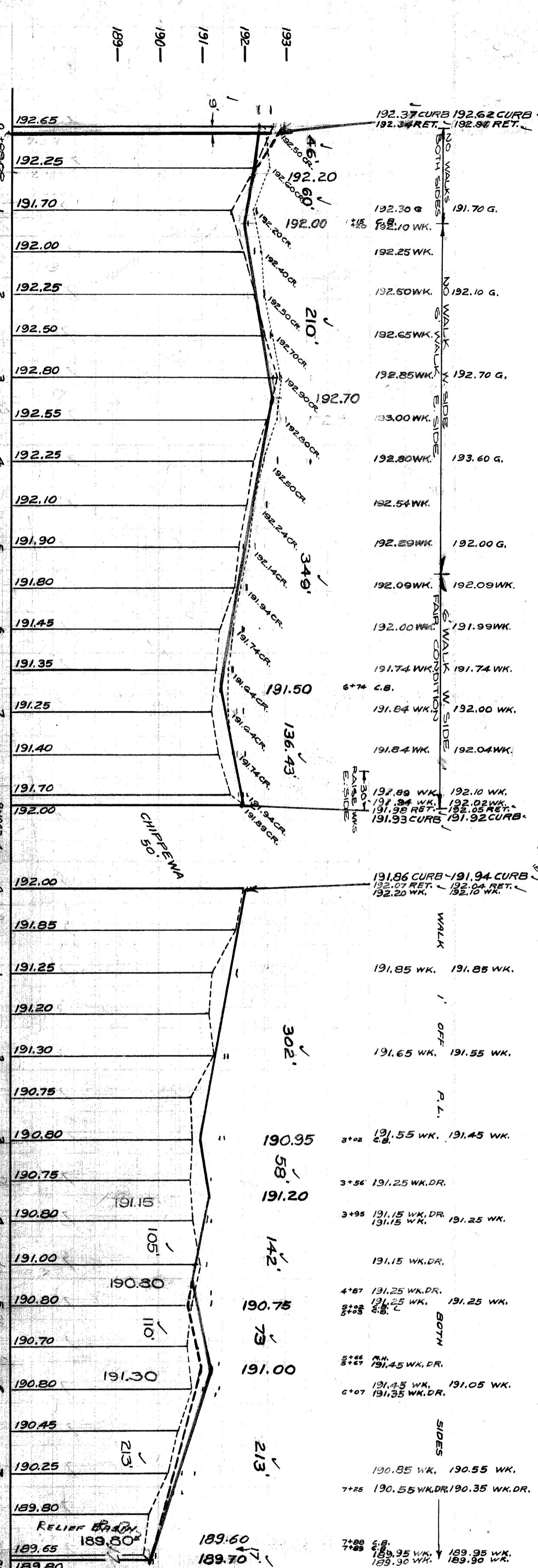
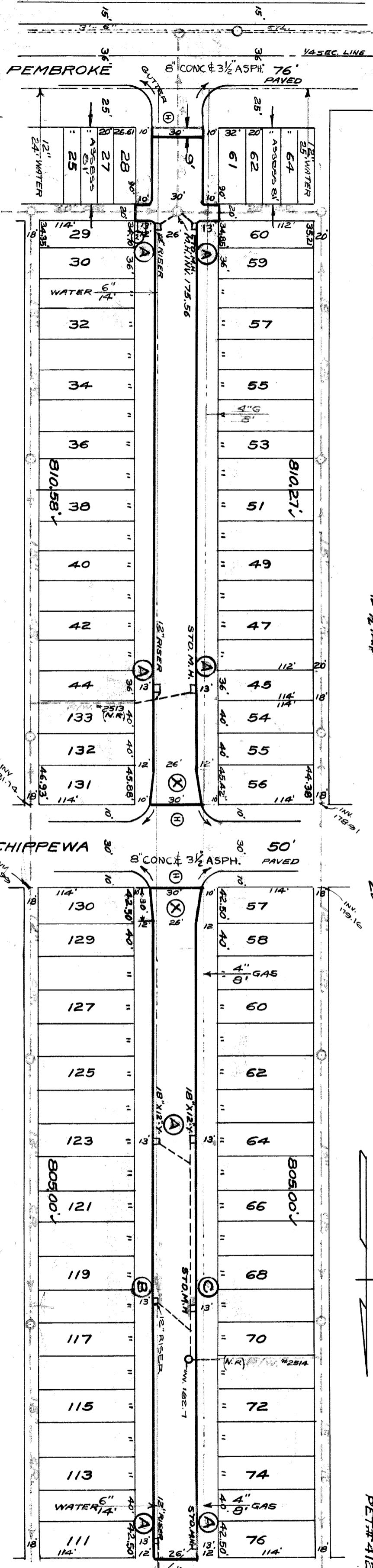


191-192  
193-194  
195-196  
197-198  
199-200

REVISIONS: GAS MAIN IN PEMBROKE TO CHIPPewa 8-28-29 J.W.M. 2-1-49 CROWN GRADES ADDED NOTES: ADDRESS 2-8-78 L.A.V.H.		CONTRACTOR MUST CHECK WITH UTILITIES BEFORE BEGINNING CONSTRUCTION, ON LOCATION OF EXISTING STRUCTURES, WHETHER SHOWN ON PLANS OR NOT.	
SUPPLEMENTAL DWG# C-965 C-324A C-327 C-586 C-739 C-325 C-390 C-587 C-739A C-326A C-524 C-733 C-739B		PLAN SCALE DISTORTED (SEE ALL OTHER DIMENSIONS IN THIS PLAN FOR INTERSECTIONS) 1"=50' PAIVING COMPLETED C.C. 11-8-49	
QUANTITIES EXCAVATION 2,171 PAVING 8,618 5705 6" CONC. DR. 5 FT. 100 12" SEWER PIPE 1 FT. 135 TYPE II CURBS 1 FT. 63 WALKS - 50' FT. 576 M.H.S. - ADJUST 3W 45 C.B.S. ADJUST 12 1/2 Tramp 12		LOTS CITY LOTS CITY	
HOR. SCALE 1" = 100' VER. SCALE 1" = 2' DATE 9-24-43 PLAN CHECKED 65 PROFILE CHECKED 65 QUANTITY CHECKED 65 TOTAL 2L 4,980.85 CITY 2L 2,490.43 COST ADVERTISING PLANS 101 COST INSPECTION 5.3		DESIGNED BY R.3 DRAWN BY F. Minkiel TRACED BY CHECKED BY G.S. APPROVED ENGINEER OF STREETS ASSIST. CITY ENGINEER	
CARD NO. 6188 INDEX TO NO. 6188 RECORD NO. 6188		DEPARTMENT OF PUBLIC WORKS CITY ENGINEER'S OFFICE - DIVISION OF PAVING DESIGN 49-19 STREET PAVING PLAN KENTUCKY S.P.L. OF NORFOLK TYPE OF PAVEMENT 8" 6" ONE COURSE CONC. INT. CURB. WIDTH 26' 30"	



NOTE:

- ① CONSTRUCT 36" SQ. FT. OR STD. 4" WALKS
- ② ADJUST TOPS OF 2 EXISTING S.H.H. BASINS & 2 EXISTING 12" L. BASINS & 2 EXISTING 8" L. BASINS TO PLAN TYPE GRATES & FRAMES
- ③ ABANDON EXISTING 12" L. BASINS, PLUS OUTLETS WITH CURBS & CONCRETE CURBS. COMPLETE CONSTRUCTION OF HOMEPLET WITH 12" L. TYPE BASIN COMPLETE WITH 12" L. TYPE CONCRETE CURBS TO BE ENCASED IN 2" OF CURBS. CONCRETE TO BE ENCASED IN 2" OF CURBS. CONCRETE TO BE ENCASED IN 2" OF CURBS.
- ④ ABANDON EXISTING S.H.H. BASINS, CONSTRUCT 1 STD. 18" X 18" TYPE BASIN COMPLETE AT CURB LOCATION, CONNECT TO EXISTING OUTLETS AS SHOWN IN DETAIL X STD. DWG. C-950
- ⑤ ADJUST TOPS OF 2 WATER MANHOLES.
- ⑥ ADJUST TOPS OF 2 EXISTING SEWER MANHOLES & RECONSTRUCT ONE (NECESSARY)
- ⑦ ADJUST TOPS OF EXISTING 24" DIA. CURBS AT ENDS OF PAVEMENT DEED UNIFORMITY FOR A DISTANCE OF 10 FT. TO MEET EXISTING GRADES. 24" CURBS IS INCLUDED UNDER EXCAVATION TOTALS FOR COST.
- ⑧ CONTRACTOR SHALL FURNISH ALL CASTINGS & SHALL HAUL AWAY SALVAGED MATERIALS TO DRIVE YARD AT STATE FAIR & JOHN
- ⑨ RAISE WALK E. SIDE NEAR EAST END OF 10' TO CONFORM WITH CURB GRADE
- ⑩ CONTRACTOR SHALL REMOVE CONCRETE HEADER & BROKEN ASPHALT BACK OF JUNCTION AS REQUIRED & FILL WITH COLD PATCH TO MEET NEW GRADES. 30 CU YDS. INCLUDED UNDER EXCAVATION TOTALS FOR COST.

91711