

DEPARTMENT OF PUBLIC WORKS DETROIT
CITY ENGINEER'S OFFICE - DIVISION OF PAVING DESIGN
STREET PAVING PLAN

5-5-2
37 94
INDEX NO.
RECORD NO.

NAME OF STREET
FROM TO
0.5' N. OF SPL. OF STATE FAIR

ONE COURSE CONCRETE - INTEGRAL CURB
B - UNIFORM AT STREET INTERSECTIONS EXCEPT AS NOTED

CONTRACT APPROVED, E.C.
PET 2812 AVARCAN 8-24-54

ASSIGN NO. 325CA-5
SHEET NO. 1
SHEETS

WIDTH 26'

JOANN

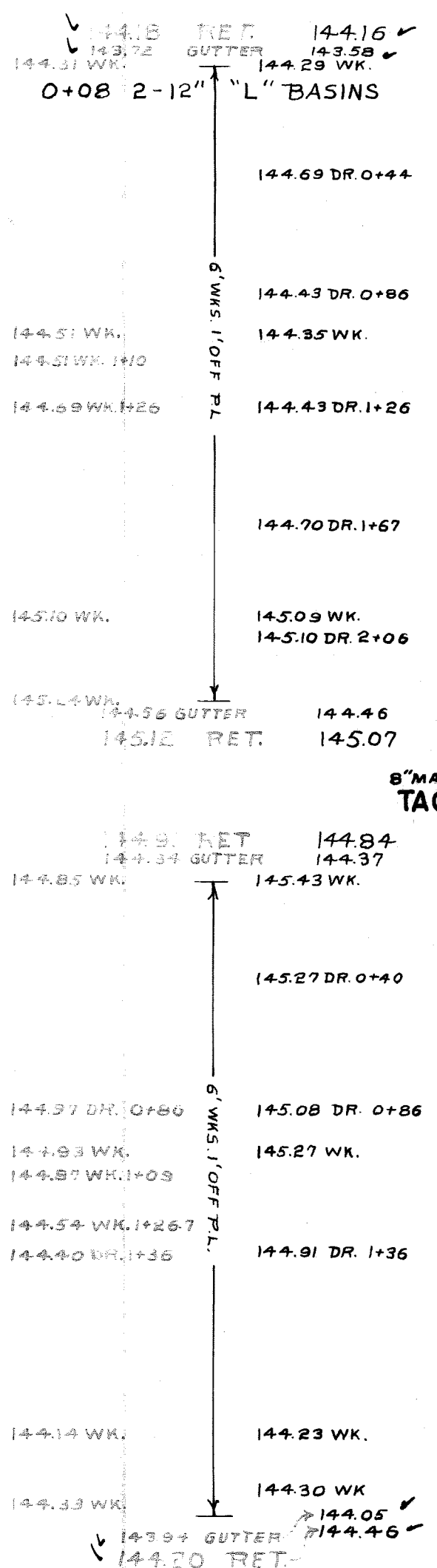
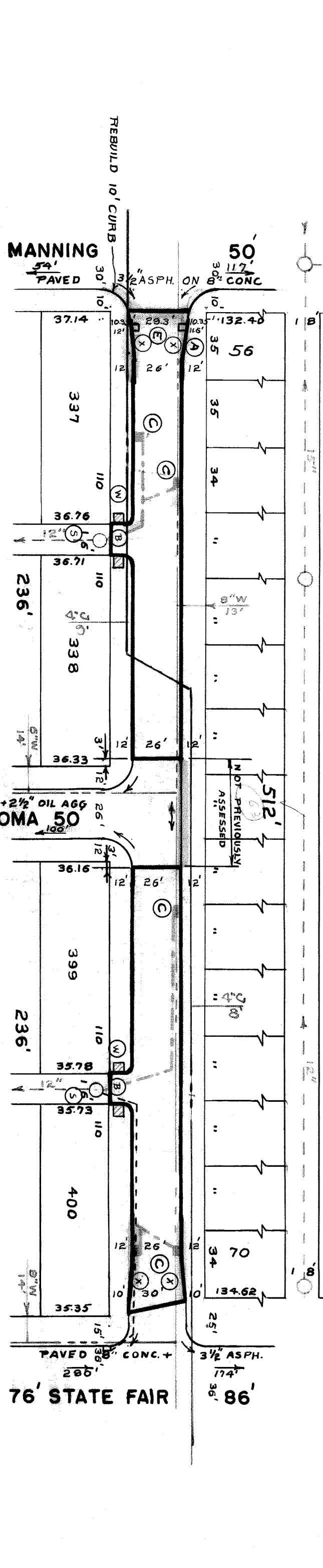
DESIGNED BY
DRAWN BY
CHECKED BY
APPROVED

DATE	BY	REVISION
12-54	AB	PROPOSED
12-10-54	AB	COMPLETED
	N.K.	CHECKED

ESTIMATED	FINAL
LOTS	LOTS
134	104
1345	92
144	144
14	14
100	100
260	260

NOTE:
BEFORE STARTING CONSTRUCTION CONTRACTOR MUST CHECK WITH UTILITIES FOR LOCATIONS OF EXISTING STRUCTURES WHETHER OR NOT INDICATED ON PLANS.
PLAN SCALE DISTORTED
LOTS & ALLEYS 1" = 50'
STREET WIDTHS 1" = 50'
DRAINAGE COMPLETED
PAVING COMPLETED C.C. 10-25-55

REVISIONS	DATE	DESCRIPTION
C-327	C-586	C-739A
C-324	C-390	C-587
C-325	C-524	C-733
C-128A	C-585	C-739
	C-586	C-1608
		C-1783



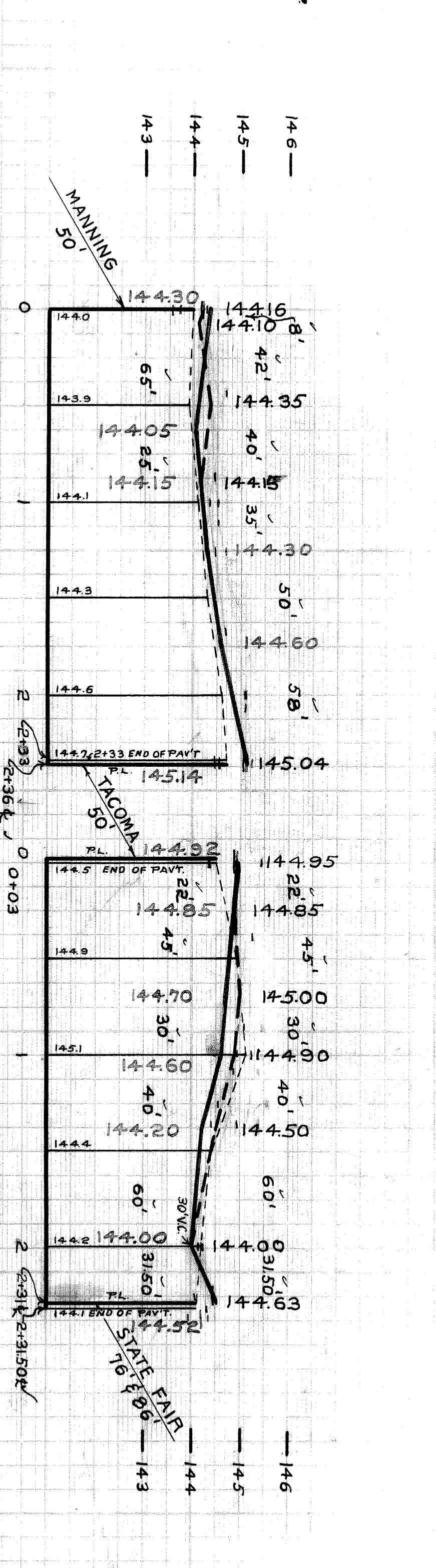
NO	SIZE	KIND	STA.	LOCATION	N. OF
1	2-4"	ELM	0+05	9'E. OF W.P.L.	MANNING
1	6"	APPLE	0+38	10.5' W. OF E.P.L.	"
1	8"	ELM	0+41	10.8' W. OF E.P.L.	"

NOTES:
FOR SYMBOLS (A) ETC. SEE STD. DETAIL DRAWING C-327.
AT (X) TAPER TO 26' PAVEMENT IN 20'.

HORIZONTAL CONTROL BY +S IN WALK 5' OFF P.L.E.S. OF JOANN.

BENCH MARKS

PL.B.M. 94-251 N.E. COR. WALTHAM & STATE FAIR
P.L.B.M. 94-251 A.N.E. COR. WESTPHALIA & STATE FAIR
ARR. ON HYD. NW. COR. JOANN & STATE FAIR
ARR. ON HYD. SW. COR. MANNING & JOANN



94586