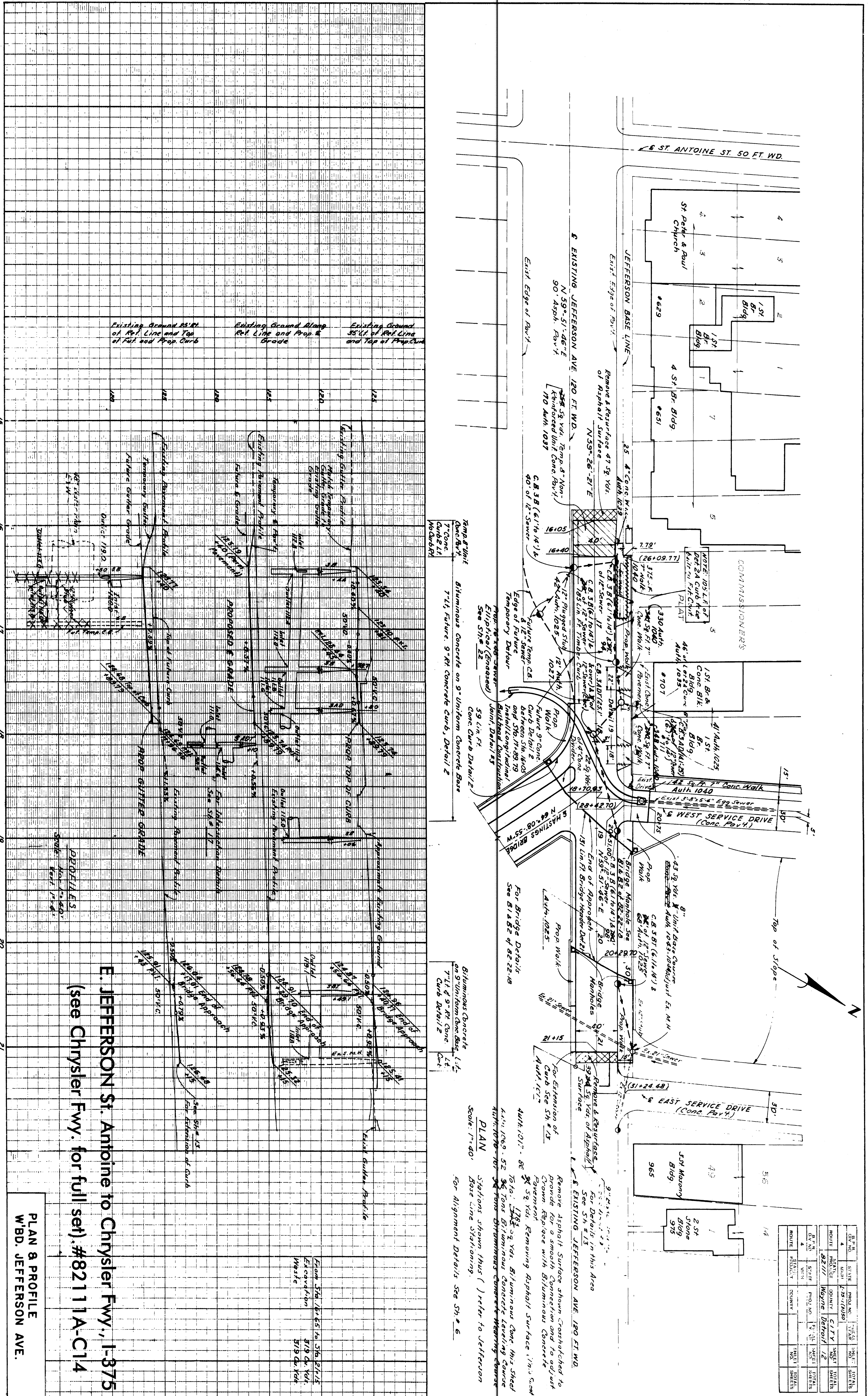


OPERATION	BY	DATE
SURVEYED		
PLAN PLOTTED		
PLAN CHECKED		
PROFILE PLOTTED		
PROFILE CHECKED		
PRELIMINARY GRADE		
GRADE INSPECTION		
FEDERAL INSPECTION		

OPERATION	BY	DATE
PRELIMINARY R.O.W. CHECKED		
FINAL DESIGN		
FINAL DESIGN CHECKED		
TRACED		
FINAL R.O.W. CHECK		
QUANTITIES		
QUANTITIES CHECKED		
SQUAD		

McLEAN, N. 9-60
 CHERAVAT, R. 6-60
 CALTABIANO, F.A. 6-60
 GIFFIN, R.L. 7-60
 O. E. Pagan 9-60
 R. R. Hicks 9-60



E. JEFFERSON St. Antoine to Chrysler Fwy., I-375
 (see Chrysler Fwy. for full set). #82111A-C14

PLAN 8 PROFILE
 W.B.D. JEFFERSON AVE.

82111-C14

Temp. 8" Unit
 Concrete
 7" Conc.
 Curb & L.I.
 No. 4068 R.I.

Bituminous Concrete
 on 9" Uniform Concrete Base, 1 1/2"
 7" L.I. & 9" Ft. Conc.
 Curb Detail 2

PLAN
 Stations shown thus () refer to Jefferson
 Base Line Stationing.
 For Alignment Details see Sps. 6

BL. NO.	STATION	PROJ. NO.	SHEET NO.	TOTAL SHEETS
4	72+10.00	177A	12	12
ROUTE	STATE	CITY	SHEET NO.	TOTAL SHEETS
82111	MI	Detroit	12	12
ROUTE	SECTION	COUNTY	SHEET NO.	TOTAL SHEETS
4	MI	Wayne	12	12