

DRAWN BY: J.V. WICKY
 CHECKED BY: M. POLITO
 N. KAWNAS
 DATE: 5/63
 4163
 4163
 5/63
 5/63

OPERATION	BY	DATE
SURVEYED		
PLAN PLOTTED		
PLAN CHECKED		
PROFILE PLOTTED		
PROFILE CHECKED		
PRELIMINARY GRADE		
CONSTRUCTION		
REVISION		

PLANS PREPARED BY
 CITY OF DETROIT
 DEPARTMENT OF PUBLIC WORKS
 CITY ENGINEERS OFFICE
 BUREAU OF HIGHWAYS AND BRUSHWAYS

OPERATION	BY	DATE
PRELIMINARY R.O.W. CHECKED		
FINAL DESIGN CHECKED		
FINAL R.O.W. CHECK		
QUANTITIES CHECKED		
CONTRACT CHECKED		
CONTRACT		

Station	Remove Ex. Asphalt Surface	Replace with Bit. Conc. Base Course	Replace with Bit. Conc. Base Course
0+60	304.72	304.72	
3+95	47.30	47.30	
7+50	45.16	45.16	
Totals	397.18	397.18	

Remove Asphalt Surface shown cross-hatched to provide for a smooth connection and to adjust Crown. Replace with Bituminous Concrete Pavement.

17 Tons Bit. Conc. Wearing Course
 17 Tons Bit. Conc. Leveling Course

CBM #14 Elev. 124.087 Arrow on hydrant
 N.E. Corner of Jefferson and Randolph
 N.B.M. 28-3544 Elev. 120.898 City of Detroit
 Monument N.E. Corner of Jefferson and Brush

CBM #3 Elev. 123.296 Arrow on hydrant
 N.E. Corner of Brush and Larned

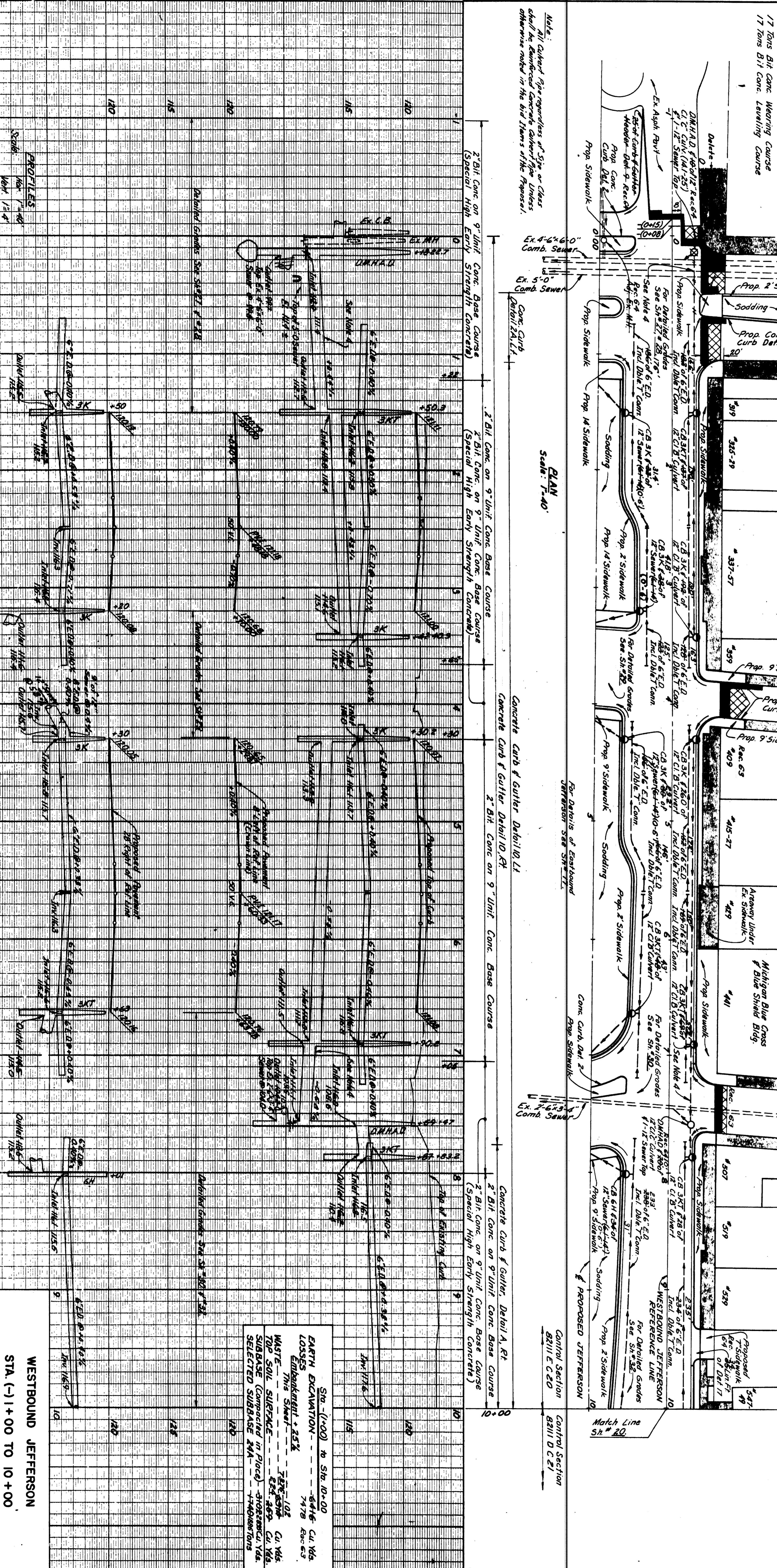
CBM #4 Elev. 123.159 Arrow on hydrant
 W.E. Corner of Beaubien and Larned

RANDOLPH ST.
 Dual 33' Asphalt

BRUSH ST.
 30' Asphalt

BEAUBIEN ST.
 40' Asphalt

E. JEFFERSON Randolph to Chrysler Fwy., I-375
 (see Chrysler Fwy. for full set) #8221 E-C20



Notes:
 1. For Alignment See Sh. 10 & 11
 2. For Construction Sequence See Sh. 12 & 13
 3. Existing Sidewalk to Remain
 4. The contractor shall construct sewers crossing streets prior to constructing adjacent streets and remainder of sewer lines.

ALL WORK THIS SHEET
 CONTROL SECTION 8211E C20

Sta. (1+00) to Sta. 10+00	Earth Excavation	Losses	Waste - This Sheet	Top Soil Surface	Subbase (Compacted in Place)	Selected Subbase
120	6475	7478	7478	7478	7478	7478
125						
130						
135						
140						
145						
150						
155						
160						
165						
170						
175						
180						
185						
190						
195						
200						

WESTBOUND JEFFERSON
 STA. (-) 1+00 TO 10+00

PROJECT NO. 8211E C20
 SHEET 19