

J. V. WICKEY  
F.A. CALTABIANO  
C. HOPKINS  
R. R. KIRBY

OPERATION	BY	DATE
SURVEYED		
PLAN CHECKED		
PROFILE PLOTTED		
PRELIMINARY GRADE		
GRADING		
FEDERAL INSPECTION		

DESIGN PREPARED BY  
CITY OF DETROIT  
DEPARTMENT OF PUBLIC WORKS  
CITY ENGINEERS OFFICE  
BUREAU OF HIGHWAYS AND BRIDGES

OPERATION	BY	DATE
PRELIMINARY R.O.W. CHECKED		
FINAL DESIGN		
FINAL DESIGN CHECKED		
TRACED		
FINAL R.O.W. CHECK		
QUANTITIES		
QUANTITIES CHECKED		
SQUAD		

Remove Asphalt Surface shown cross-hatched to provide for a smooth connection and for a uniform crown. Replace with Bituminous Concrete Pavement.

Station	Remove Ex. Asphalt Surface	Replace with Bit. Conc. Pavement
12+40	59 Yds	59 Yds
Totals Rec'd	3336	3336

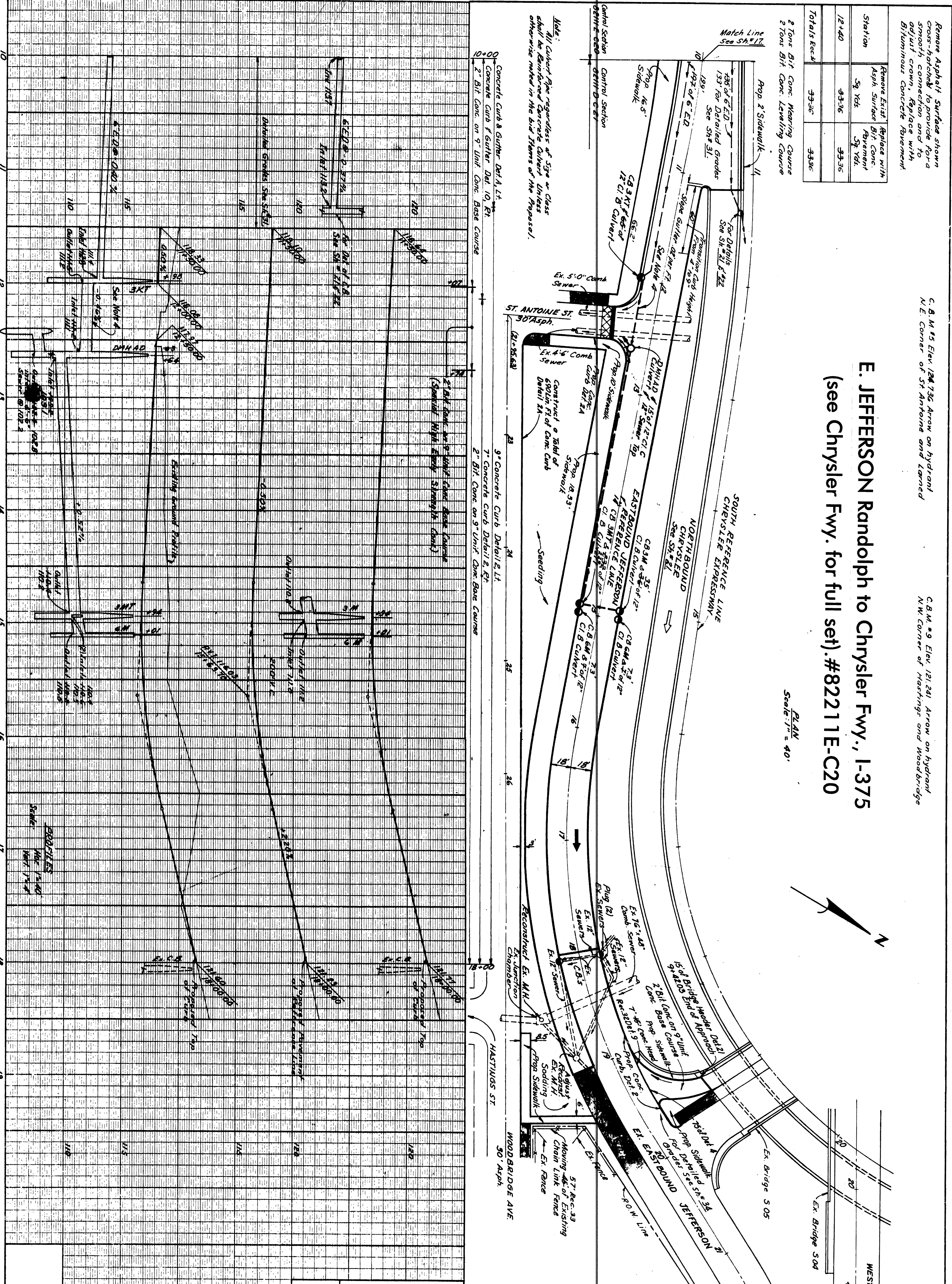
C.B.M. #5 Elev. 124.736 Arrow on hydrant N.E. Corner of St. Antoine and Larned

C.B.M. #9 Elev. 121.281 Arrow on hydrant N.W. Corner of Hastings and Woodbridge

# E. JEFFERSON Randolph to Chrysler Fwy., I-375

(see Chrysler Fwy. for full set) #82211E-C20

Scale: 1" = 40'



**Notes:**

- For Alignment See Sht. 11 & 12
- For Construction Sequence, See Sht. 13 & 14
- Existing Sidewalks to Remain
- The Contractor shall construct sewers crossing streets prior to constructing adjacent C.B. and remainder of sewer line.

**ALL WORK THIS SHEET CONTROL SECTION 82111-D-C-21**

**EARTH EXCAVATION** --- 8861 Ca Yds  
**LOSSES** --- 444.039 6939 B.C. 31  
 Embankment +25% --- 76  
 Removal 54% --- 5  
 Select Yellow Clay dk. F. 111  
 \* Drainage Sht. #20 --- 1  
 Removal Sht. #22 --- 49  
 Total Losses --- 54  
**WASTE** --- 54  
**TOP SOIL SURFACE** --- 211  
**SUBBASE** (Compacted in Place) --- 325  
 Sht. 10+00 to 11+11.55 --- 325  
**SELECTED SUBBASE #4A** --- 183  
 Sht. 10+00 to Sht. 11+11.55 --- 183

STATE	PROJ. NO.	DESIGN	SHEET	TOTAL
MI	12727/1838	11E-C20	18	18
COUNTY	CITY	SHEET	TOTAL	
Wayne	Detroit	18		

EASTBOUND JEFFERSON  
STA. 10+00 TO 22+50