

J.V. WICKERY  
 J. SMITH  
 N. RAWWAS  
 R.A. KIRBY

OPERATION	BY	DATE
SURVEYED		
PLAN PLOTTED		
PLAN CHECKED		
PROFILE CHECKED		
PRELIMINARY GRADE		
GRADE INSPECTION		
FINAL INSPECTION		

PLANS PREPARED BY  
 CITY OF DETROIT  
 DEPARTMENT OF PUBLIC WORKS  
 CITY ENGINEER

OPERATION	BY	DATE
PRELIMINARY R.O.W. CHECKED		
FINAL DESIGN		
FINAL DESIGN CHECKED		
TRADED		
R.O.W. CHECK		
QUANTITIES		
QUANTITIES CHECKED		
SQUAD		

Station	Remove Ex. Asphalt Surface shown cross-hatched to provide for a smooth connection and to adjust Crown. Replace with Bituminous Concrete Pavement.	Station	Conc. Curb Header Det 9 Lin. Ft.
3+80	455.5	3+80	34.31
3+80	455.5	3+80	34.31
Total Rec'd	455.5	Total Rec'd	34.31

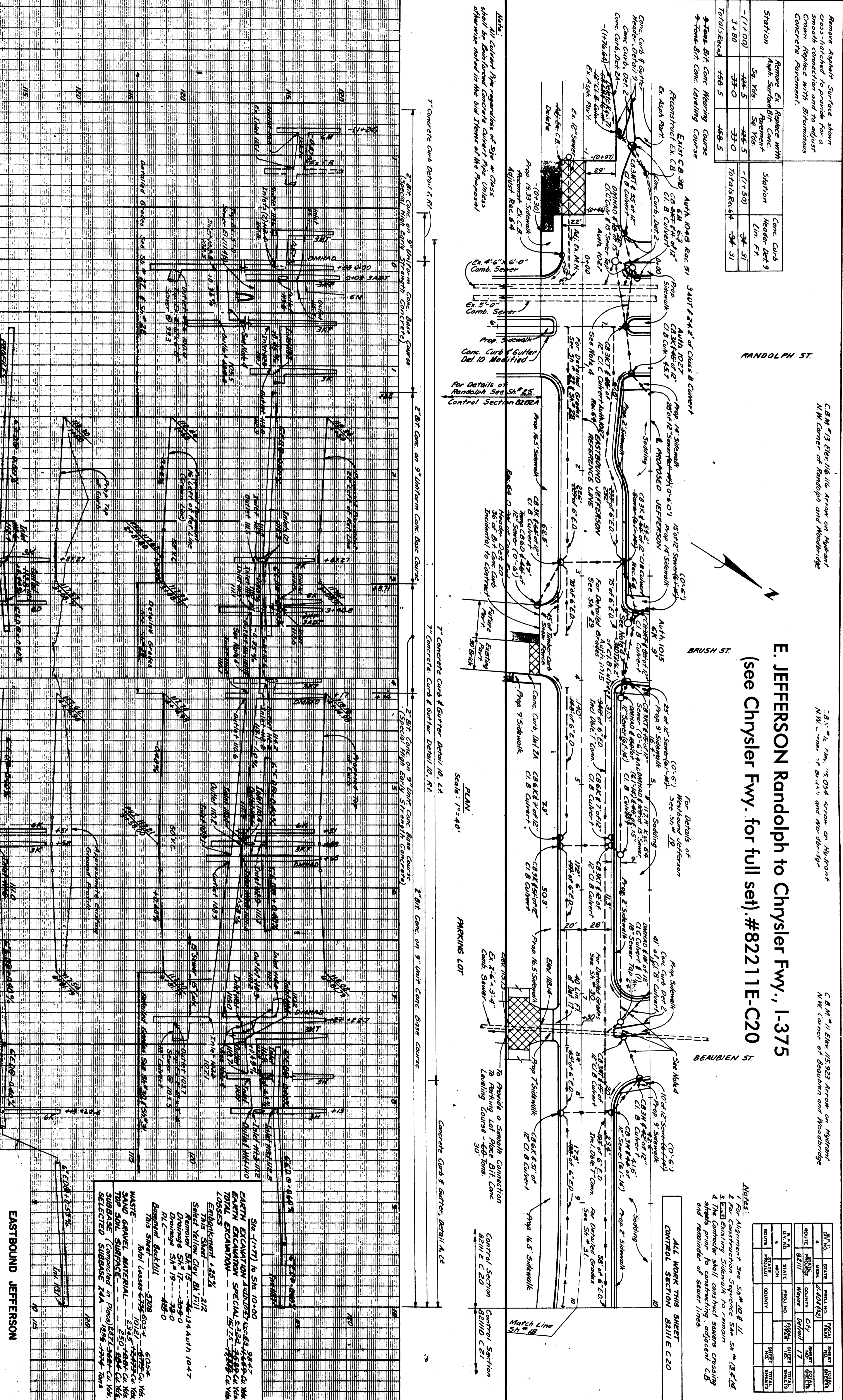
Station	Remove Ex. Asphalt Surface shown cross-hatched to provide for a smooth connection and to adjust Crown. Replace with Bituminous Concrete Pavement.	Station	Conc. Curb Header Det 9 Lin. Ft.
3+80	455.5	3+80	34.31
3+80	455.5	3+80 <td 34.31	
Total Rec'd	455.5	Total Rec'd	34.31

RANDOLPH ST.

**E. JEFFERSON Randolph to Chrysler Fwy., I-375**  
 (see Chrysler Fwy. for full set) #82211E-C20

BRUSH ST.

BEAUBIEN ST.



Notes:

- For Alignment see SH # 10 & 11
- For Construction Sequence see SH # 12 & 13
- Existing Sidewalk to remain
- The Contractor shall construct sewer crossing shields prior to constructing adjacent C.B.
- and remainder of sewer lines.

ALL WORK THIS SHEET CONTROL SECTION B2111E C20

Sta. 1+77 to Sta. 10+00	884.7
EARTH EXCAVATION	157.5
TOTAL EXCAVATION	1027.2
LOSSES	
Embankment +85%	212
This Shovel	212
Select Yellow Clay Bl. Fill	
Remove SH # 15	134.4
Drainage SH # 17	399.0
Drainage SH # 19	33.0
P.C.	488.0
Aboriginal Backfill	5708
This Shovel	5708
80% Loose earth	605.4
WASTE GRAVEL MATERIAL	234.5
TOP SOLE SURFACE	550
SUBBASE (Compacted in Place) B2111E C20	1027.2
SELECTED SUBBASE B2111E C20	1027.2

EASTBOUND JEFFERSON  
 STA. (-) 1+77 TO 10+00

STATE	PROJ. NO.	SHEET NO.	TOTAL SHEETS
MI	1-200 (23)	17	17
CITY	COUNTY	SHEET NO.	TOTAL SHEETS
DETROIT	WAYNE	17	17
ROUTE	PROJECT	SHEET NO.	TOTAL SHEETS
B2111	17	17	17